

# *Grizzly* *Industrial, Inc.*®

## MODEL G0650 WELDING/GRINDING DOWNDRAFT TABLE OWNER'S MANUAL



COPYRIGHT © JULY, 2008 BY GRIZZLY INDUSTRIAL, INC.  
**WARNING: NO PORTION OF THIS MANUAL MAY BE REPRODUCED IN ANY SHAPE  
OR FORM WITHOUT THE WRITTEN APPROVAL OF GRIZZLY INDUSTRIAL, INC.**  
#CR10834 PRINTED IN TAIWAN



## **WARNING!**

**This manual provides critical safety instructions on the proper setup, operation, maintenance and service of this machine/equipment.**

**Failure to read, understand and follow the instructions given in this manual may result in serious personal injury, including amputation, electrocution or death.**

**The owner of this machine/equipment is solely responsible for its safe use. This responsibility includes but is not limited to proper installation in a safe environment, personnel training and usage authorization, proper inspection and maintenance, manual availability and comprehension, application of safety devices, blade/cutter integrity, and the usage of personal protective equipment.**

**The manufacturer will not be held liable for injury or property damage from negligence, improper training, machine modifications or misuse.**



## **WARNING!**

**Some dust created by power sanding, sawing, grinding, drilling, and other construction activities contains chemicals known to the State of California to cause cancer, birth defects or other reproductive harm. Some examples of these chemicals are:**

- **Lead from lead-based paints.**
- **Crystalline silica from bricks, cement and other masonry products.**
- **Arsenic and chromium from chemically-treated lumber.**

**Your risk from these exposures varies, depending on how often you do this type of work. To reduce your exposure to these chemicals: Work in a well ventilated area, and work with approved safety equipment, such as those dust masks that are specially designed to filter out microscopic particles.**

# Table of Contents

<b>INTRODUCTION .....</b>	<b>2</b>	<b>SECTION 3: OPERATIONS .....</b>	<b>13</b>
Foreword.....	2	Operation Safety.....	13
Contact Info.....	2	General Operation .....	13
Functional Overview .....	2	<b>SECTION 4: ACCESSORIES .....</b>	<b>14</b>
Machine Data Sheet .....	3	<b>SECTION 5: MAINTENANCE.....</b>	<b>17</b>
Identification.....	4	Schedule .....	17
<b>SECTION 1: SAFETY .....</b>	<b>5</b>	Cleaning.....	17
Safety Instructions for Machinery .....	5	Screen Cleaning .....	17
Safety Instructions for Downdraft Tables.....	7	Parts Breakdown.....	18
Meeting Welding Fume Extraction Codes and Standards.....	8	<b>SECTION 6: PARTS .....</b>	<b>18</b>
<b>SECTION 2: SETUP .....</b>	<b>9</b>	<b>WARRANTY AND RETURNS .....</b>	<b>21</b>
Setup Safety .....	9		
Items Needed for Setup.....	9		
Unpacking .....	9		
Site Considerations.....	9		
Inventory .....	10		
Hardware Recognition Chart .....	11		
Assembly .....	12		

# INTRODUCTION

---

---

## Foreword

---

---

We are proud to offer the Model G0650 Downdraft Table. This machine is part of a growing Grizzly family of fine metalworking machinery. When used according to the guidelines set forth in this manual, you can expect years of trouble-free, enjoyable operation and proof of Grizzly's commitment to customer satisfaction.

The specifications, drawings, and photographs illustrated in this manual represent the Model G0650 when the manual was prepared. However, owing to Grizzly's policy of continuous improvement, changes may be made at any time with no obligation on the part of Grizzly.

For your convenience, we always keep current Grizzly manuals available on our website at **www.grizzly.com**. Any updates to your machine will be reflected in these manuals as soon as they are complete. Visit our site often to check for the latest updates to this manual!

## Contact Info

---

---

We stand behind our machines. If you have any service questions, parts requests or general questions about the machine, please call or write us at the location listed below.

Grizzly Industrial, Inc.  
1203 Lycoming Mall Circle  
Muncy, PA 17756  
Phone: (570) 546-9663  
Fax: (800) 438-5901  
E-Mail: techsupport@grizzly.com

If you have any comments regarding this manual, please write to us at the address below:

Grizzly Industrial, Inc.  
c/o Technical Documentation Manager  
P.O. Box 2069  
Bellingham, WA 98227-2069  
Email: manuals@grizzly.com

## Functional Overview

---

---

This downdraft table is designed to connect to the Grizzly G0648 Welding Fume Collector or a similar machine to collect welding/grinding sparks, slag, and dust. This table is not designed to be the "single solution" for decontaminating shop air. Metals often have coatings that produce very poisonous fumes when heated.

During operation, welding and grinding fumes and contaminants are drawn down through the heavy-duty chrome vented work table and fall into the slag catch drawer. Next, this contaminated air passes through the removable stainless screen where sparks are arrested and the large dust is caught. From this point, the welding smoke and fine dust is drawn into the fume collector through the included fire resistant flex hose.

The downdraft table work surface, slag drawer, and screen are removable for easy cleaning.

The downdraft table back and side panels are removable for welding and grinding long or awkward workpieces.





# MACHINE DATA SHEET

Customer Service #: (570) 546-9663 • To Order Call: (800) 523-4777 • Fax #: (800) 438-5901

## MODEL G0650 SMALL DOWNDRAFT TABLE FOR MODEL G0648

### Product Dimensions:

Weight ..... 243 lbs  
 Width/Depth/Height ..... 40<sup>1</sup>/<sub>4</sub>" x 28" x 51<sup>3</sup>/<sub>16</sub>"  
 Footprint (Length/Width) ..... 40<sup>1</sup>/<sub>4</sub>" x 28"

### Shipping Dimensions:

Type ..... Cardboard  
 Content ..... Machine  
 Weight ..... 262 lbs.  
 Length/Width/Height ..... 43" x 34<sup>1</sup>/<sub>4</sub>" x 26<sup>3</sup>/<sub>16</sub>"

### Main Specifications:

Suction Port Diameter ..... 5"  
 Filter Stage 1 Type ..... Stainless Steel Mesh  
 Filter Stage 1 Dimensions ..... 15<sup>3</sup>/<sub>8</sub>" x 7<sup>7</sup>/<sub>8</sub>"  
 Work Table Dimensions (Width/Depth) ..... 37" x 22<sup>13</sup>/<sub>16</sub>"  
 Spark and Slag Trap Drawer (Width/Depth/Height) ..... 23<sup>1</sup>/<sub>4</sub>" x 15<sup>3</sup>/<sub>4</sub>" x 8<sup>7</sup>/<sub>8</sub>"  
 Work Table Surface From Floor ..... 35<sup>1</sup>/<sub>2</sub>"

### Construction

Body ..... Steel  
 Table ..... Heavy-Duty Chrome Plated  
 Spark Curtain ..... Steel  
 Paint ..... Epoxy and Powder Coat

### Other Specifications:

Country Of Origin ..... Taiwan  
 Warranty ..... 1 Year  
 Serial Number Location ..... ID Label on Front of the Machine

### Features:

- 15<sup>13</sup>/<sub>16</sub>" high removable steel spark curtains
- Extra large stainless steel slag catch drawer with stainless spark screen
- Heavy duty chrome-plated apex vented work table for even air suction
- 120" x 5" flex suction hose, included
- Front and rear folding transport handles
- Heavy duty construction



# Identification

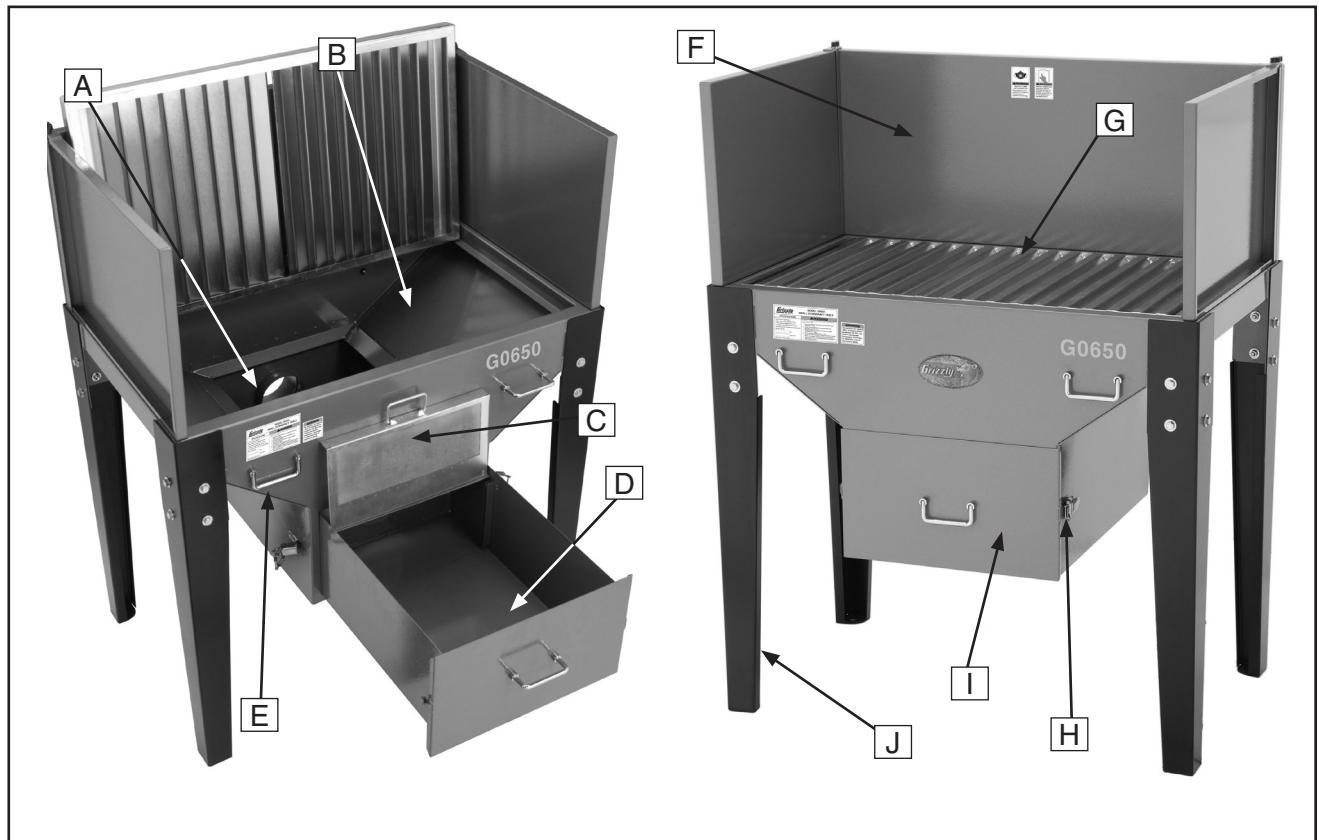


Figure 1. Features.

- A. **5" Suction Port:** Connection point for fume collector suction ducting.
- B. **Cabinet Hopper:** Serves as a funnel to guide welding material and distribute suction to all areas of the vented work table.
- C. **1-2mm Stainless Slag/Spark Screen:** Removable screen that catches large dust particles and arrests sparks and flaming slag.
- D. **Slag Catch:** Location where heavy slag and grinding material collects instead of passing into the welding fume collector.
- E. **Lifting Handle:** Four heavy duty handles allow for easy table transport.
- F. **Spark Shield:** Helps contain sparks and focus work table suction.
- G. **Chrome Vented Work Table:** Supports workpieces during welding, cutting, and grinding operations. Long vents allow for efficient suction across the table surface.
- H. **Quick Service Latch:** Allows for quick and easy slag drawer screen and filter access.
- I. **Slag Drawer:** Serves as a single location for cleaning and screen maintenance.
- J. **Heavy Duty Leg System:** Supports the entire cabinet and workpiece.



# SECTION 1: SAFETY

## WARNING

### For Your Own Safety, Read Instruction Manual Before Operating this Machine

The purpose of safety symbols is to attract your attention to possible hazardous conditions. This manual uses a series of symbols and signal words intended to convey the level of importance of the safety messages. The progression of symbols is described below. Remember that safety messages by themselves do not eliminate danger and are not a substitute for proper accident prevention measures.



Indicates an imminently hazardous situation which, if not avoided, **WILL** result in death or serious injury.



Indicates a potentially hazardous situation which, if not avoided, **COULD** result in death or serious injury.



Indicates a potentially hazardous situation which, if not avoided, **MAY** result in minor or moderate injury. It may also be used to alert against unsafe practices.

**NOTICE**

This symbol is used to alert the user to useful information about proper operation of the machine.

## WARNING

### Safety Instructions for Machinery

- 1. READ THE ENTIRE MANUAL BEFORE STARTING MACHINERY.** Machinery presents serious injury hazards to untrained users.
- 2. ALWAYS USE ANSI APPROVED SAFETY GLASSES WHEN OPERATING MACHINERY.** Everyday eyeglasses only have impact resistant lenses—they are NOT safety glasses.
- 3. ALWAYS WEAR A NIOSH APPROVED RESPIRATOR WHEN OPERATING MACHINERY THAT PRODUCES DUST.** Most types of dust (wood, metal, etc.) can cause severe respiratory illnesses.
- 4. ALWAYS USE HEARING PROTECTION WHEN OPERATING MACHINERY.** Machinery noise can cause permanent hearing loss.
- 5. WEAR PROPER APPAREL. DO NOT** wear loose clothing, gloves, neckties, rings, or jewelry that can catch in moving parts. Wear protective hair covering to contain long hair and wear non-slip footwear.
- 6. NEVER OPERATE MACHINERY WHEN TIRED OR UNDER THE INFLUENCE OF DRUGS OR ALCOHOL.** Be mentally alert at all times when running machinery.





# WARNING

## Safety Instructions for Machinery

7. **ONLY ALLOW TRAINED AND PROPERLY SUPERVISED PERSONNEL TO OPERATE MACHINERY.** Make sure operation instructions are safe and clearly understood.
8. **KEEP CHILDREN AND VISITORS AWAY.** Keep all children and visitors a safe distance from the work area.
9. **MAKE WORKSHOP CHILDPROOF.** Use padlocks, master switches, and remove start switch keys.
10. **NEVER LEAVE WHEN MACHINE IS RUNNING.** Turn power **OFF** and allow all moving parts to come to a complete stop before leaving machine unattended.
11. **DO NOT USE IN DANGEROUS ENVIRONMENTS.** DO NOT use machinery in damp, wet locations, or where any flammable or noxious fumes may exist.
12. **KEEP WORK AREA CLEAN AND WELL LIGHTED.** Clutter and dark shadows may cause accidents.
13. **USE A GROUNDED EXTENSION CORD RATED FOR THE MACHINE AMPERAGE.** Grounded cords minimize shock hazards. Undersized cords create excessive heat. Always replace damaged extension cords.
14. **ALWAYS DISCONNECT FROM POWER SOURCE BEFORE SERVICING MACHINERY.** Make sure switch is in OFF position before reconnecting.
15. **MAINTAIN MACHINERY WITH CARE.** Keep blades sharp and clean for best and safest performance. Follow instructions for lubricating and changing accessories.
16. **MAKE SURE GUARDS ARE IN PLACE AND WORK CORRECTLY BEFORE USING MACHINERY.**
17. **REMOVE ADJUSTING KEYS AND WRENCHES.** Make a habit of checking for keys and adjusting wrenches before turning machinery **ON**.
18. **CHECK FOR DAMAGED PARTS BEFORE USING MACHINERY.** Check for binding or misaligned parts, broken parts, loose bolts, and any other conditions that may impair machine operation. Repair or replace damaged parts before operation.
19. **USE RECOMMENDED ACCESSORIES.** Refer to the instruction manual for recommended accessories. Improper accessories increase risk of injury.
20. **DO NOT FORCE MACHINERY.** Work at the speed for which the machine or accessory was designed.
21. **SECURE WORKPIECE.** Use clamps or a vise to hold the workpiece when practical. A secured workpiece protects your hands and frees both hands to operate the machine.
22. **DO NOT OVERREACH.** Maintain stability and balance at all times.
23. **MANY MACHINES CAN EJECT WORKPIECES TOWARD OPERATOR.** Know and avoid conditions that cause the workpiece to "kickback."
24. **ALWAYS LOCK MOBILE BASES (IF USED) BEFORE OPERATING MACHINERY.**
25. **CERTAIN DUST MAY BE HAZARDOUS** to the respiratory systems of people and animals, especially fine dust. Be aware of the type of dust you are exposed to and always wear a respirator designed to filter that type of dust.





# WARNING

## Safety Instructions for Downdraft Tables

- 1. WELDING FUMES.** Welding fumes are hazardous and can cause lung damage without warning. Keep your face away from welding fumes, and position any overhead suction hoods near the arc to draw in additional fumes from the vented work table area. Use an ANSI approved respirator for the applicable type of welding operation, and protect others from these fumes.
- 2. WELDING IN A CONFINED SPACE CAN BE HAZARDOUS.** Do not use this downdraft table in confined spaces without adequate ventilation. Fume extractors do not replace oxygen that is consumed by welding and cutting operations. Suffocation can occur if this warning is ignored. Always open all covers, doors, and windows to sustain fresh air ventilation. Wear an air line respirator, and always work with a partner who can immediately give you help from outside of the welding area.
- 3. CORRECT FILTRATION.** Never modify this downdraft table for any other purpose than it was designed for. Only connect this downdraft table to an adequate fume extractor designed to remove welding and grinding contaminants from shop air.
- 4. EQUIPMENT MAINTENANCE.** Make sure to keep the slag drawer cleaned out and the stainless steel spark screen clean, or suction airflow may be reduced, causing hazardous welding fumes to build up in the shop.
- 5. CORRECT USAGE.** Before, during, and after welding operations, always pay attention to work area fire hazards and take appropriate measures to eliminate sources of ignition. Daily inspect the downdraft table ducting for damage or leaks and repair or replace ducting as required to maintain leak-free operation.
- 6. EXPLOSION RISK.** Suspended dust particles near an ignition source may cause an explosion. Do not weld in areas where explosion risks exist. Locations of high risk include, but are not limited to, areas equipped with furnaces, water heaters, fuel tanks, vehicles, paint booths, or paint and chemical storage lockers.
- 7. EXPERIENCING DIFFICULTIES.** Keep in mind that all normal welding hazards are intensified in a confined space. If you are experiencing difficulties performing the intended operation, stop using the equipment. Contact our Technical Support Department at (570) 546-9663.

### WARNING

Like all machinery there is potential danger when operating this machine. Accidents are frequently caused by lack of familiarity or failure to pay attention. Use this machine with respect and caution to lessen the possibility of operator injury. If normal safety precautions are overlooked or ignored, serious personal injury may occur.

### CAUTION

No list of safety guidelines can be complete. Every shop environment is different. Always consider safety first, as it applies to your individual working conditions. Use this and other machinery with caution and respect. Failure to do so could result in serious personal injury, damage to equipment, or poor work results.



# Meeting Welding Fume Extraction Codes and Standards

---

---

Welding, cutting, brazing, or soldering of metals can give off poisonous fumes containing zinc, lead, beryllium, cadmium, mercury, fluorine, and hexavalent chromium and others. These fumes typically originate from fluxes, solders, anti-corrosion coatings, pigments, metal fillers, and residual chemicals on the workpiece. The Model G0650 Welding/Grinding Downdraft Table is designed to help welding shops meet clean air requirements mandated by OSHA. This table is designed to be a part of an overall fume control system. It is NOT designed to serve as a "single-solution" for keeping workers safe from all welding fumes. You must contact OSHA to find out how to design and maintain the best overall welding fume control system for your work station or shop. Often, depending on the workspace size, volume of work, type of material to be welded, or other special circumstances, you must use additional safety equipment such as personal air line respirators, hoods, masks, and complete body protection.

Contact the organizations below to help you meet welding fume extraction requirements:

**Occupational Safety and Health Administration (OSHA).**

—Code of Federal Regulations, Title 29 Labor, Parts 1910.1 to 1910.1450, available from the U.S. Government Printing Office, Superintendent of Documents, P.O. Box 371954, Pittsburgh, PA 15250-7954 (telephone: 800-321-6742; web site: [www.osha.gov](http://www.osha.gov)).

**American Welding Society (AWS).**

—Fumes and Gases in the Welding Environment, available from Global Engineering Documents, 15 Inverness Way East, Englewood, CO 80112-5776 (800-854-7179; web site: [www.global.ihs.com](http://www.global.ihs.com)).

**American National Standards Institute (ANSI).**

—Safety in Welding, Cutting, and Allied Processes (ANSI Z49.1), available from Global Engineering Documents, 15 Inverness Way East, Englewood, CO 80112-5776 (telephone: 800-854-7179; web site: [www.global.ihs.com](http://www.global.ihs.com)).

**National Institute for Occupational Safety and Health (NIOSH).**

—Safety and Health in Arc Welding and Gas Welding and Cutting, NIOSH Publication No. 78-138. Cincinnati, OH (telephone: 800-356-4674; web site: <http://www.cdc.gov/niosh>).

**International Agency For Research On Cancer (IARC).**

—Monographs on the Evaluation of Carcinogenic Risks to Humans, Chromium, Nickel, and Welding, Vol. 49 (1990), Oxford University Press, New York, NY 10016 (telephone: 212-726-6000; web site: [www.oup-usa.org](http://www.oup-usa.org)).

**National Fire Protection Association (NFPA),** P. O. Box 9101, 1 Battery March Park, Quincy, MA 02269-9101, (617) 770-3000, Website: [www.nfpa.org](http://www.nfpa.org) and [www.sparky.org](http://www.sparky.org).

—National Electrical Code, NFPA Standard 70

—Standard for Fire Prevention During Welding, Cutting, and Other Hot Work, NFPA Standard 51B

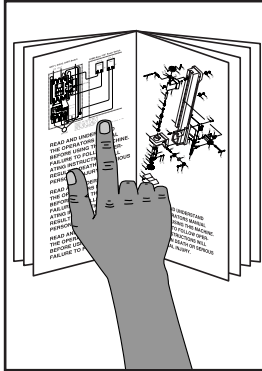
**American Conference of Governmental Industrial Hygienists (ACGIH).**

—Documentation of the Threshold Limit Values and Biological Exposure Indices, available from ACGIH, 1330 Kemper Meadow Drive, Cincinnati, OH 45240-1634 (telephone: 513-742-2020; web site: [www.acgih.org](http://www.acgih.org)).



# SECTION 2: SETUP

## Setup Safety



**! WARNING**  
This machine presents serious injury hazards to untrained users. Read through this entire manual to become familiar with the controls and operations before starting the machine!



**! WARNING**  
Wear safety glasses during the entire setup process!

## Items Needed for Setup

The following items are needed to complete the setup process, but are not included with your downdraft table:

Description	Qty
• Wrench $\frac{3}{8}$ " .....	1
• Phillips Screwdriver #2 .....	1
• Assistant .....	1

## Unpacking

Your downdraft table was carefully packaged for safe transportation. Remove the packaging materials from around your table and inspect it. If you discover the unit is damaged, *please immediately call Customer Service at (570) 546-9663 for advice.*

Save the containers and all packing materials for possible inspection by the carrier or its agent. *Otherwise, filing a freight claim can be difficult.*

When you are completely satisfied with the condition of your shipment, inventory the contents.

## Site Considerations

### Floor Load

Refer to the **Machine Data Sheet** for the weight and footprint specifications of your downdraft table. Some floors may require additional reinforcement to support both the table, workpiece, and operator.

### Placement Location

Consider existing and anticipated needs, size of material to be welded at this downdraft table, and space for auxiliary stands, or other machinery safely out of the way. Never connect this downdraft table to a standard dust collector, and make sure that you are familiar with the types of fumes produced by the material that you are welding. Keep your shop in compliance with OSHA welding safety requirements at all times.



# Inventory

The following is a description of the components shipped with your machine. Lay the components out to inventory them.

**Note:** *If you can't find an item on this list, check the mounting location on the machine or examine the packaging materials carefully. Occasionally we pre-install certain components for shipping purposes.*

Inventory: (Figure 2)	Qty
A. Thumb Screws $\frac{5}{16}$ "-18 (Spark Shield) .....	2
B. Flat Washers $\frac{5}{16}$ " (Spark Shield) .....	2
C. Rear Spark Shield .....	1
D. Left Spark Shield .....	1
E. Right Spark Shield .....	1
F. Vented Work Table .....	1
G. Hopper Cabinet .....	1
H. Hex Nuts $\frac{3}{8}$ "-24 (Cabinet) .....	10
I. Flat Washers $\frac{3}{8}$ " (Cabinet) .....	10
J. Handles (Cabinet & Drawer) .....	5
K. Phillip Head Screws M5-8 X 12 (Latch).....	6
L. Hex Nuts M5-8 (Latch) .....	6
M. Latches .....	2
N. Slag/Spark Screen .....	1
O. Slag Drawer.....	1
P. Suction Hose 5" x 9.8' .....	1
Q. Hose Clamp 5" (Suction Hose).....	2
R. Hex Bolts $\frac{3}{8}$ "-16 X $\frac{3}{4}$ " (Legs) .....	16
S. Flat Washers $\frac{3}{8}$ " (Legs).....	32
T. Hex Nuts $\frac{3}{8}$ "-16 (Legs) .....	16
U. Legs.....	4

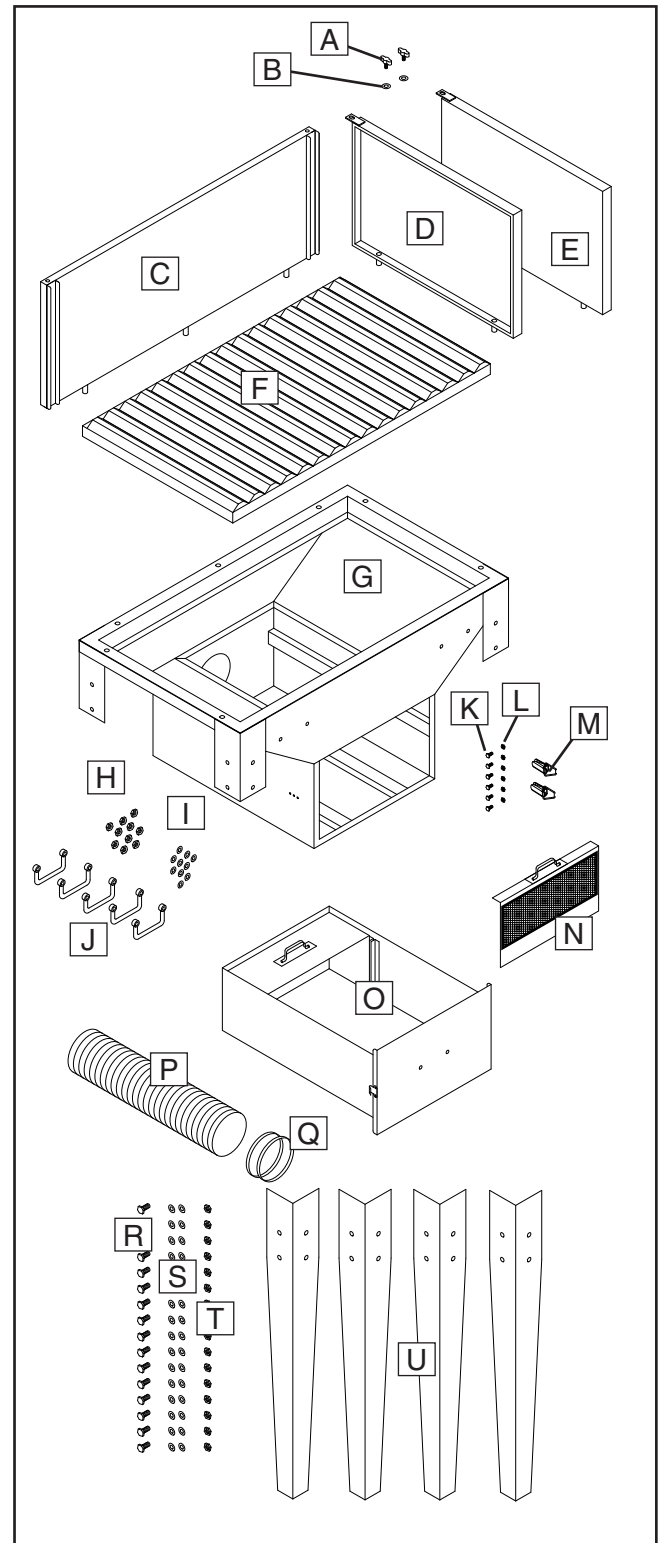



Figure 2. Inventory.



**⚠ WARNING**  
**SUFFOCATION HAZARD!**  
**Immediately discard all plastic bags and packing materials to eliminate choking/suffocation hazards for children and animals.**

If any nonproprietary parts are missing (e.g. a nut or a washer), we will gladly replace them; or for the sake of expediency, replacements can be obtained at your local hardware store.



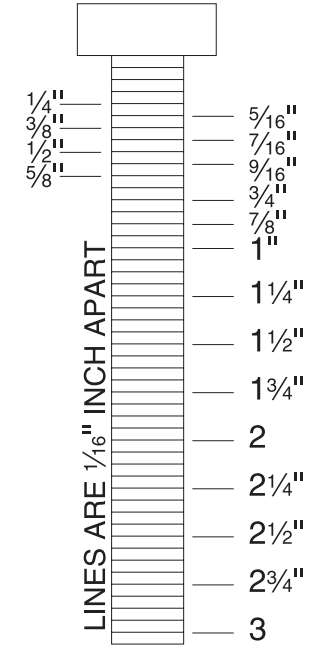
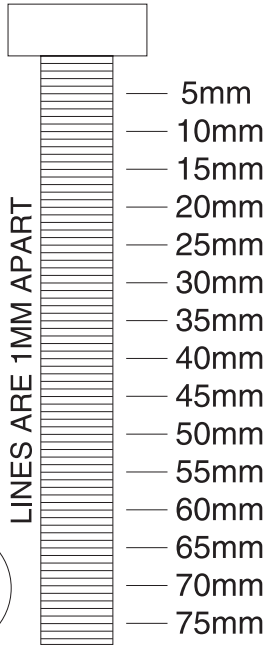
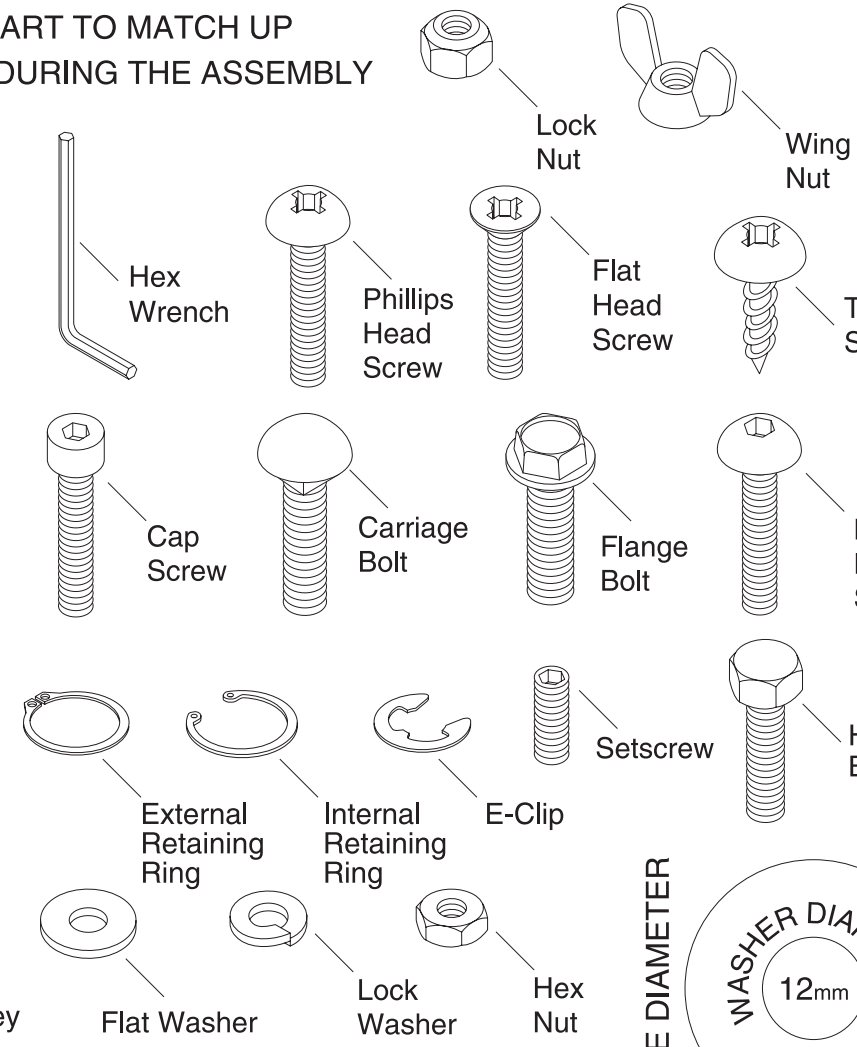
# Hardware Recognition Chart

USE THIS CHART TO MATCH UP HARDWARE DURING THE ASSEMBLY PROCESS.

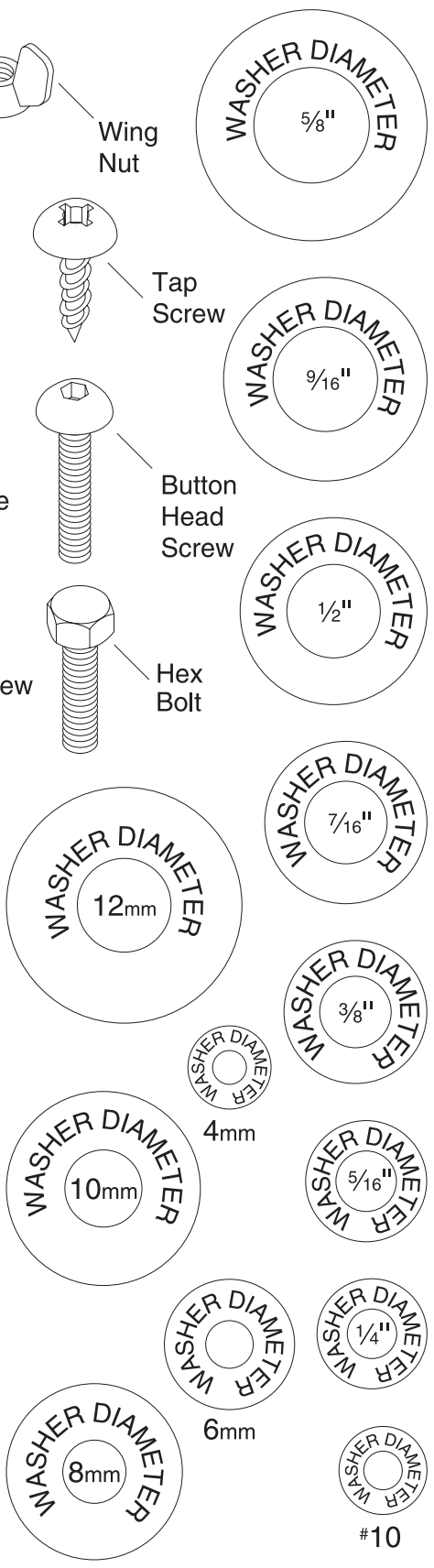
MEASURE BOLT DIAMETER BY PLACING INSIDE CIRCLE

- #10
- 1/4"
- 5/16"
- 3/8"
- 7/16"
- 1/2"

- 4mm
- 6mm
- 8mm
- 10mm
- 12mm
- 16mm



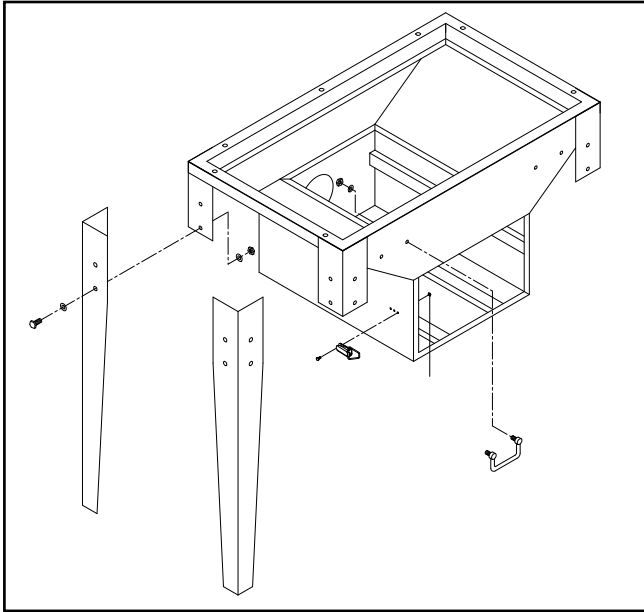
WASHERS ARE MEASURED BY THE INSIDE DIAMETER



# Assembly

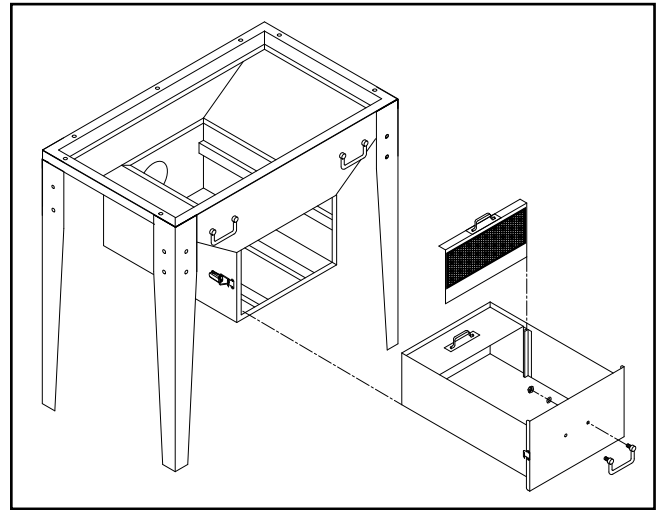
## To assemble the welding table:

1. Install four lifting handles onto the cabinet, using eight  $\frac{3}{8}$ "-24 hex nuts and flat washers (**Figure 3**).



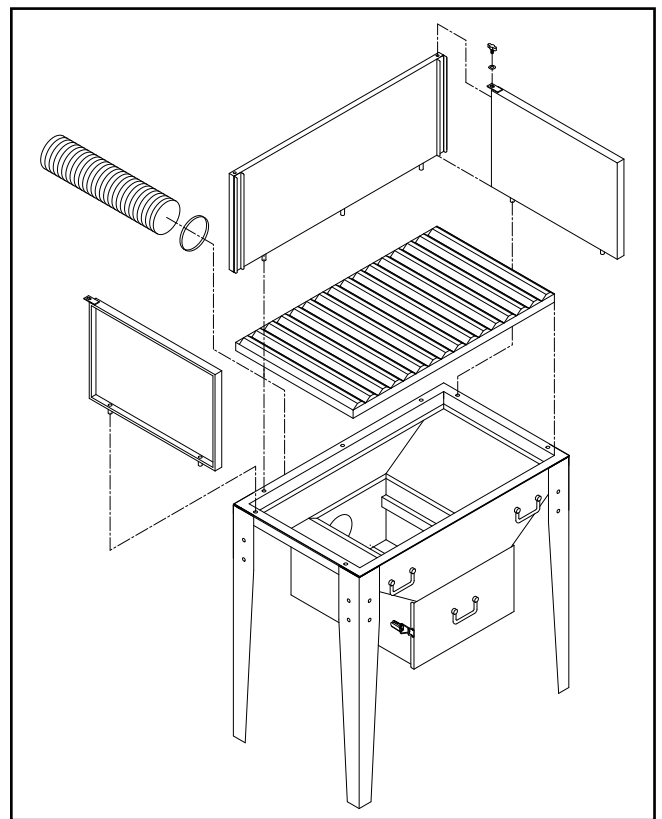
**Figure 3.** Handle, latch, and leg installation.

2. Install the two drawer latches with the six M5-8 X 12 slotted screws and hex nuts (**Figure 3**).
3. With the help of an assistant, install the four legs to the cabinet with the  $\frac{3}{8}$ "-16 X  $\frac{3}{4}$ " hex bolts and flat washers (**Figure 3**).
4. Install the remaining handle on the drawer front with two  $\frac{3}{8}$ "-24 hex nuts, flat washers, and hex nuts (**Figure 4**).
5. Slide the slag screen into the drawer slot and install the drawer into the cabinet (**Figure 4**).



**Figure 4.** Slag screen and drawer installation.

6. Secure the flexible suction hose to the spout at the rear of the downdraft table with the 5" hose clamp, and place the vented work table onto the top of the cabinet (**Figure 5**).



**Figure 5.** Final assembly.

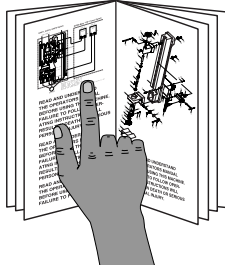
7. Insert the spark shields and secure the top corners with the thumb knobs and the remaining flat washers (**Figure 5**).





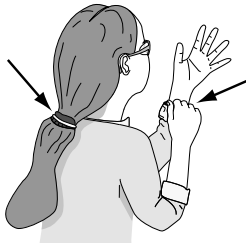


# SECTION 3: OPERATIONS

## Operation Safety

	<b>!WARNING</b> To reduce the risk of serious injury when using this machine, read and understand this entire manual before beginning any operations.
---	--

<b>!WARNING</b> Damage to your eyes and lungs could result from using this machine without proper protective gear. Always wear safety glasses and a respirator when operating this machine.	
	

	<b>!WARNING</b> Loose hair, clothing, or jewelry could get caught in machinery and cause serious personal injury. Keep these items away from moving parts at all times to reduce this risk.
---	--

<b>NOTICE</b> If you have never used this type of machine or equipment before, WE STRONGLY RECOMMEND that you read books, trade magazines, or get formal training before beginning any projects. Regardless of the content in this section, Grizzly Industrial will not be held liable for accidents caused by lack of training.	
---	--

## General Operation

This downdraft table is designed to connect to the Grizzly G0648 Welding Fume Collector or a similar machine. It is not designed to be a substitute for a respirator or fresh-air type respirator. Make sure that you are familiar with the materials to be welded and know what types of fumes will be created. Additionally, many metals have coatings that produce poisonous fumes when heated. Make sure to strip off coatings at least four inches away from the area of heat application before welding or cutting.

Between welding jobs, periodically clean out the slag catch and clean the stainless steel screen. If the type of welding changes drastically or if paint, rubberized undercoating, or other coatings cause excessive smoke, you may have to clean the screen more often in order to maintain a satisfactory suction.



Figure 6. G0650 welding/grinding downdraft table.

Always follow good welding practices and remove coatings that may smoke and possibly contaminate the weld. This downdraft table does not save you from the task of proper workpiece preparation.





# SECTION 4: ACCESSORIES

## H5295 5" Welding Fume Collection Kit

Our starter kit includes everything you will need for a simple, single machine set up at one low price. The branch and end cap makes your fume extraction system expansion ready for future growth. This kit will allow you to expand ducting design as your shop gets bigger.

- 2 machine adapters
- 10 pipe clamps
- 3 5' pipes
- 1 branch
- 3 pipe hangers
- 1 end cap
- 3 adjustable nipples
- 1 90° elbow
- 1 60° elbow

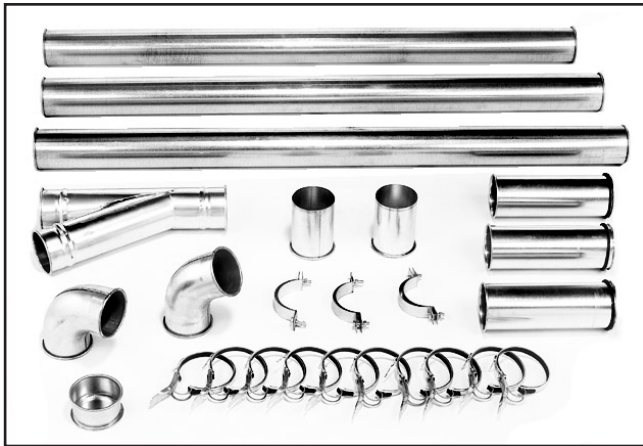


Figure 7. Model H5295 welding fume collection kit.

## H7216—Rigid Flex Hose

This Rigid Flex Hose with rolled collars provides just enough flexibility to make difficult connections while still keeping the inside wall as smooth as possible. 5" diameter and 5 feet long.

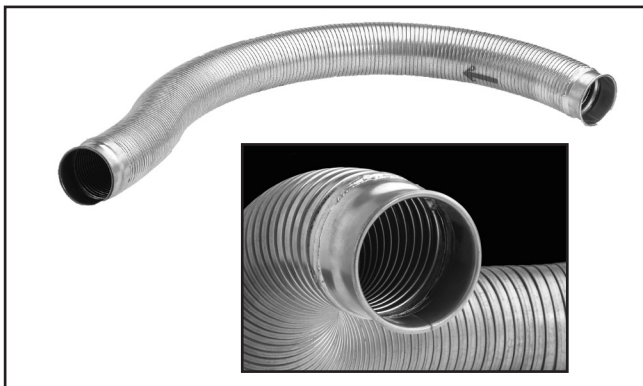


Figure 8. Model H7216 rigid flex hose.

## Steel 6" Elbows

5 styles of 5" diameter elbows give you the versatility to create just about any duct run. Well made and intended for tough use.

- G7348 5" 30° Elbow.
- G7349 5" 45° Elbow.
- G7350 5" 60° Elbow.
- G7351 5" 90° Short Elbow.
- G7352 5" 90° Long Elbow.

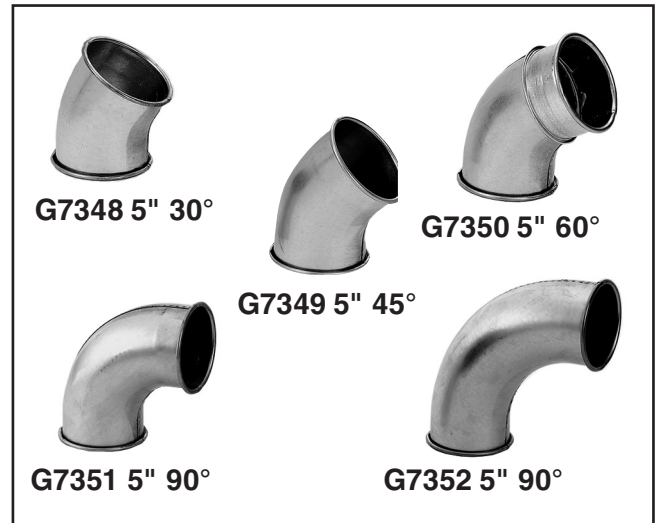


Figure 9. Steel elbows.

## G7343—5" Clamps

These Clamps put the Quick-Fit™ into the Quick-Fit™ system. Featuring lever latches and foam seals, these Clamps secure around the rolled ends of fittings and pipe.



Figure 10. Model G7343 Quick-Fit™ clamps.

Call 1-800-523-4777 To Order



### H7786—Auto Darkening Welding Helmet

Automatic UV and IR filters protect eyes from harmful visible and invisible light during welding. Switching time is less than or equal to 2 milliseconds, so there's no need to flip the helmet up to see your work under normal light conditions. Full face protection features adjustable head suspension and adjustable delay time, sensitivity and dark shade protection. Viewing area is 3½" x 1½". Includes 2 AAA batteries.



Figure 11. Model H7786 welding helmet.

### H6175—Power Respirator

#### H6892—3M Pre-Filter, 10-Pack

#### H6893—Filter Cartridge, 10-Pack

Say goodbye to foggy safety glasses and labored breathing, this battery powered respirator supplies a constant breeze of fresh air all day long. Comes with its own plastic case for clean, sealed storage. Finally, a respirator you can look forward to wearing—at an affordable price!



Figure 12. H6175 Power Respirator.

### T20514—Small Half-Mask Respirator

### T20515—Medium Half-Mask Respirator

### T20516—Large Half-Mask Respirator

### T20511—Pre-Filter P100

### T20539—Cartridge Filter 2PK P100

### T20541—Cartridge Filter 2PK P100 & O Vapor

Wood and other types of dust can cause severe respiratory damage. If you work around dust every day, a half-mask respirator can greatly reduce your risk. Compatible with safety glasses!

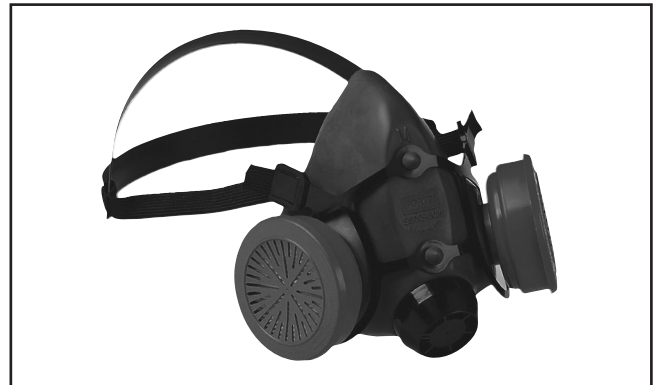


Figure 13. Half-mask respirator with disposable cartridge filters.

### T20505—Welding Respirator with Valve

Added flame retardants help reduce the shell flammability, making these N99 Premium Particulate Respirators ideal for welding applications. NIOSH certified to a 99% efficiency for particulates free of oil.

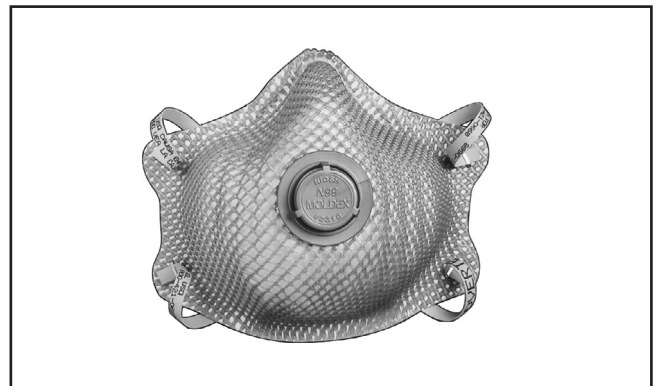


Figure 14. Model T20505 welding respirator.

Call 1-800-523-4777 To Order



**G8028— Small Angle Welding Clamp**

**G8029— Large Angle Welding Clamp**

Take the set up time and effort out of metalworking applications that involve holding material for right angle joining, assembling, welding or grinding. A self-centering jaw quickly adjusts to clamp workpieces, even accommodating pieces of different sizes. The 90° angle clamp is made of high quality cast iron. The spindle, which automatically pivots for an accurate 90° grip, is also copper plated to resist weld spatter. Work surface and base are milled for added precision. Small clamp weighs approximately 12 lbs. Large clamp weighs approximately 29 lbs.



**Figure 15.** Cast-iron welding clamp.

**H9748—Leather Jacket Medium (40–42)**

**H9887—Leather Jacket Large (44–46)**

**H9888—Leather Jacket X-Large (48–52)**

**H9746—Leather Knee Pads**

**H9745—Leather Shoe Covers**

These leather jackets, knee pads, and shoe covers provide full protection from welding sparks and spatter. Gloves not included.



**Figure 16.** Leather welding protection.

**Call 1-800-523-4777 To Order**



# SECTION 5: MAINTENANCE

## Schedule

For optimum performance from your machine, follow this maintenance schedule and the instructions given in this section. Always wear an OSHA approved respirator when cleaning this machine.

### Daily Check/Maintenance:

- Check suction hose for leaks.
- Clean slag catch and screen as required.
- Inspect and correct for any other unsafe condition.
- Inspect welding area before and after welding or cutting operations for fire hazards and smoldering combustibles.

## ⚠️ WARNING

When servicing filters, wear appropriate respirators and body protection. When vacuuming filters and cabinet, only use a shop vacuum that is equipped with a HEPA filter, or dangerous particles may be spread throughout your shop and contaminate the air. Wrap all waste filters in air-tight plastic bags, mark and dispose of according to current laws and regulations.

## Cleaning

Cleaning the Model G0650 is relatively easy. Wear an OSHA approved respirator and vacuum excess dust with a shop vacuum fitted with a HEPA filter. Wipe off the remaining dust with a damp cloth. Do not use harsh detergents or solvents on the cabinet.

## Screen Cleaning

The Model G0650 has a high-quality 1-2mm stainless steel screen. Make sure that you clean this screen often and inspect for holes or damage.

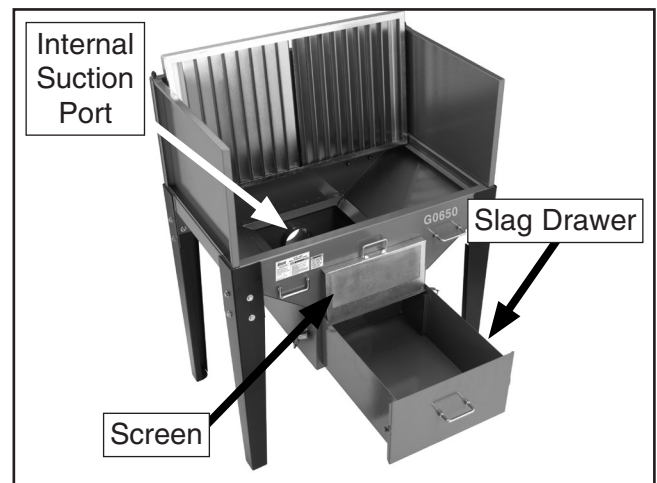
### Tools Needed

Qty

Leather Gloves and Safety Goggles .....	1 Pair
Wire Brush.....	1
OSHA Approved Respirator .....	1
Shop Vacuum w/HEPA Filter .....	1
Wire Brush.....	1

### To clean the screen:

1. Wearing a respirator, eye protection, and heavy leather gloves, remove the vented work table and set it aside.
2. Unlatch and remove the slag drawer and slide the screen up and out (**Figure 17**).

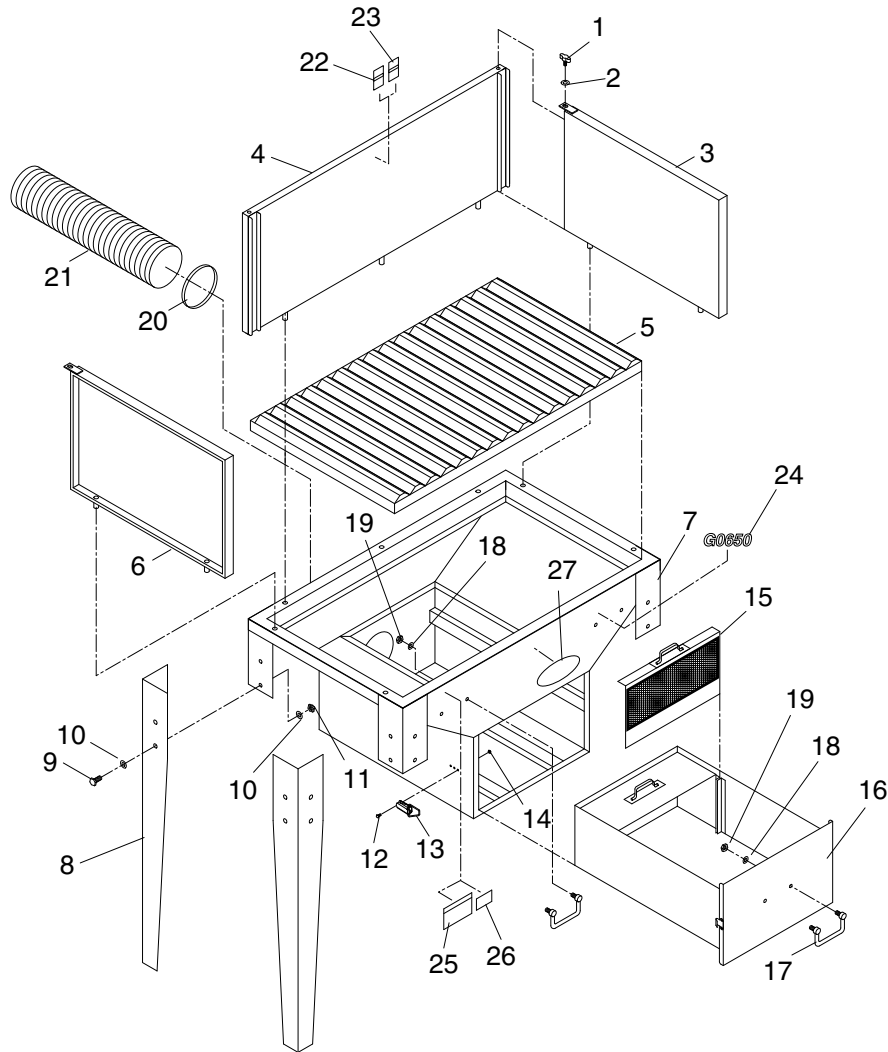


**Figure 17.** Cover and stainless screen.

3. Tap the screen and carefully use a wire brush to brush away built up dust or slag. If any solder or slag has welded itself to the screen, do not pry it off or you may put a hole in the screen.
4. Vacuum the loose dust in the cabinet and slag drawer; and reinstall the screen, drawer, and the vented work table.



# Parts Breakdown



REF	PART #	DESCRIPTION
1	P0650001	THUMB SCREW 5/16-18 X 3/4
2	PW07	FLAT WASHER 5/16"
3	P0650003	RIGHT SPARK SHIELD
4	P0650004	REAR SPARK SHIELD
5	P0650005	VENTED WORK TABLE
6	P0650006	LEFT SPARK SHIELD
7	P0650007	CABINET
8	P0650008	LEG
9	PB21	HEX BOLT 3/8-16 X 3/4
10	PW02	FLAT WASHER 3/8
11	PN08	HEX NUT 3/8-16
12	PS08M	PHLP HD SCR M5-.8 X 12
13	P0650013	SPRING LATCH
14	PN06M	HEX NUT M5-.8

REF	PART #	DESCRIPTION
15	P0650015	SLAG SCREEN
16	P0650016	SLAG DRAWER
17	P0650017	HANDLE
18	PW02	FLAT WASHER 3/8
19	PN08	HEX NUT 3/8-16
20	P0650020	HOSE CLAMP 5"
21	P0650021	5" SUCTION HOSE
22	PLABEL-39	RESPIRATOR LABEL
23	PLABEL-12	READ MANUAL LABEL
24	P0650024	MODEL NUMBER LABEL
25	P0650025	DATA LABEL
26	P0650026	GENERAL WARNING LABEL
27	G9987	LOGO PLATE







# WARRANTY CARD

Name \_\_\_\_\_

Street \_\_\_\_\_

City \_\_\_\_\_ State \_\_\_\_\_ Zip \_\_\_\_\_

Phone # \_\_\_\_\_ Email \_\_\_\_\_ Invoice # \_\_\_\_\_

Model # \_\_\_\_\_ Order # \_\_\_\_\_ Serial # \_\_\_\_\_

The following information is given on a voluntary basis. It will be used for marketing purposes to help us develop better products and services. **Of course, all information is strictly confidential.**

1. How did you learn about us?

- Advertisement                       Friend                       Catalog
- Card Deck                               Website                       Other:

2. Which of the following magazines do you subscribe to?

- |   |  |   |
|---|--|---|
| <input type="checkbox"/> Cabinet Maker          | <input type="checkbox"/> Popular Mechanics   | <input type="checkbox"/> Today's Homeowner    |
| <input type="checkbox"/> Family Handyman        | <input type="checkbox"/> Popular Science     | <input type="checkbox"/> Wood                 |
| <input type="checkbox"/> Hand Loader            | <input type="checkbox"/> Popular Woodworking | <input type="checkbox"/> Wooden Boat          |
| <input type="checkbox"/> Handy                  | <input type="checkbox"/> Practical Homeowner | <input type="checkbox"/> Woodshop News        |
| <input type="checkbox"/> Home Shop Machinist    | <input type="checkbox"/> Precision Shooter   | <input type="checkbox"/> Woodsmith            |
| <input type="checkbox"/> Journal of Light Cont. | <input type="checkbox"/> Projects in Metal   | <input type="checkbox"/> Woodwork             |
| <input type="checkbox"/> Live Steam             | <input type="checkbox"/> RC Modeler          | <input type="checkbox"/> Woodworker West      |
| <input type="checkbox"/> Model Airplane News    | <input type="checkbox"/> Rifle               | <input type="checkbox"/> Woodworker's Journal |
| <input type="checkbox"/> Modeltec               | <input type="checkbox"/> Shop Notes          | <input type="checkbox"/> Other:               |
| <input type="checkbox"/> Old House Journal      | <input type="checkbox"/> Shotgun News        |   |

3. What is your annual household income?

- \$20,000-\$29,000                       \$30,000-\$39,000                       \$40,000-\$49,000
- \$50,000-\$59,000                       \$60,000-\$69,000                       \$70,000+

4. What is your age group?

- 20-29                                       30-39                                       40-49
- 50-59                                       60-69                                       70+

5. How long have you been a woodworker/metalworker?

- 0-2 Years                       2-8 Years                       8-20 Years                       20+ Years

6. How many of your machines or tools are Grizzly?

- 0-2                       3-5                       6-9                       10+

7. Do you think your machine represents a good value?       Yes                       No

8. Would you recommend Grizzly Industrial to a friend?       Yes                       No

9. Would you allow us to use your name as a reference for Grizzly customers in your area?  
**Note:** We never use names more than 3 times.       Yes                       No

10. Comments: \_\_\_\_\_

---



---



---

CUT ALONG DOTTED LINE

FOLD ALONG DOTTED LINE

---

---

---



Place  
Stamp  
Here



GRIZZLY INDUSTRIAL, INC.  
P.O. BOX 2069  
BELLINGHAM, WA 98227-2069



FOLD ALONG DOTTED LINE

Send a Grizzly Catalog to a friend:

Name _____
Street _____
City _____ State _____ Zip _____

TAPE ALONG EDGES--PLEASE DO NOT STAPLE



# WARRANTY AND RETURNS

---

Grizzly Industrial, Inc. warrants every product it sells for a period of **1 year** to the original purchaser from the date of purchase. This warranty does not apply to defects due directly or indirectly to misuse, abuse, negligence, accidents, repairs or alterations or lack of maintenance. This is Grizzly's sole written warranty and any and all warranties that may be implied by law, including any merchantability or fitness, for any particular purpose, are hereby limited to the duration of this written warranty. We do not warrant or represent that the merchandise complies with the provisions of any law or acts unless the manufacturer so warrants. In no event shall Grizzly's liability under this warranty exceed the purchase price paid for the product and any legal actions brought against Grizzly shall be tried in the State of Washington, County of Whatcom.

We shall in no event be liable for death, injuries to persons or property or for incidental, contingent, special, or consequential damages arising from the use of our products.

To take advantage of this warranty, contact us by mail or phone and give us all the details. We will then issue you a "Return Number," which must be clearly posted on the outside as well as the inside of the carton. We will not accept any item back without this number. Proof of purchase must accompany the merchandise.

The manufacturers reserve the right to change specifications at any time because they constantly strive to achieve better quality equipment. We make every effort to ensure that our products meet high quality and durability standards and we hope you never need to use this warranty.

Please feel free to write or call us if you have any questions about the machine or the manual.

Thank you again for your business and continued support. We hope to serve you again soon.

# *grizzly.com*

**TOOL WEBSITE**

Buy Direct and Save with Grizzly® – Trusted, Proven and a Great Value!

*Visit Our Website Today And Discover  
Why Grizzly® Is The Industry Leader!*

- SECURE ORDERING
- ORDERS SHIPPED WITHIN 24 HOURS
- E-MAIL RESPONSE WITHIN ONE HOUR

-OR-

Call Today For A **FREE**  
Full Color Catalog

**1-800-523-4777**

