

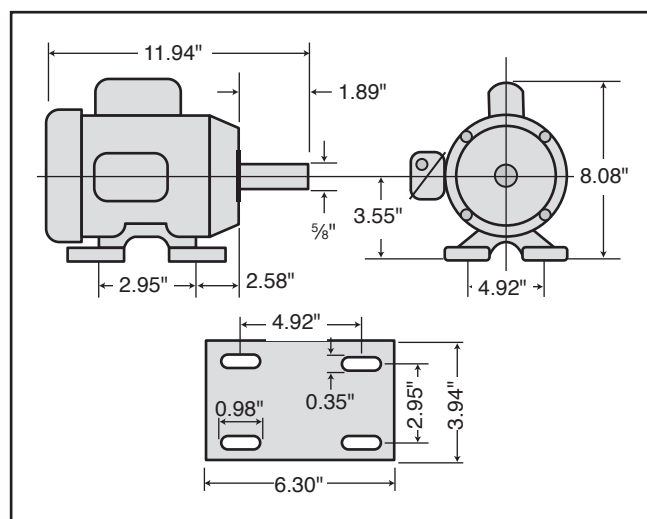


MODEL G2532 1 HP ELECTRIC MOTOR INSTRUCTIONS

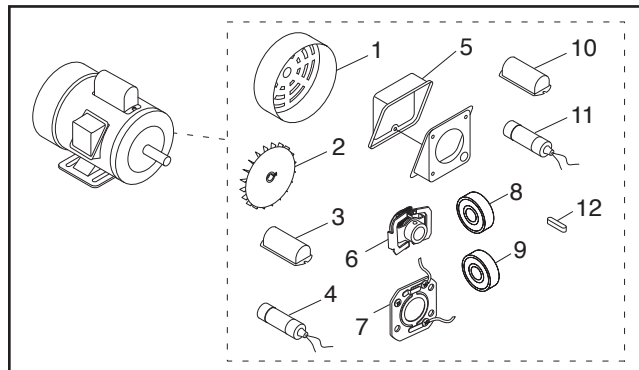
For questions or help with this product contact Tech Support at (570) 546-9663 or techsupport@grizzly.com

Model G2532 Specifications

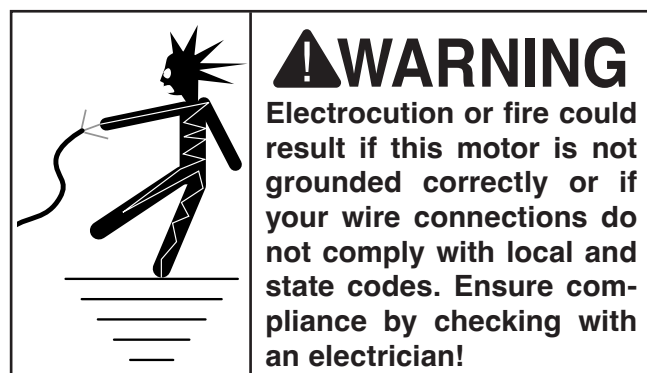
Power 1 HP
Cycle.....60 Hz
Voltage.....110V/220V
Prewired 110V
Amps 11.6/5.8A
Speed 1725 RPM
Phase Single-Phase
Class..... E



Replaceable Parts

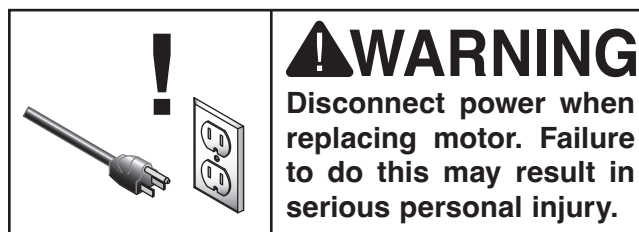


REF	PART #	DESCRIPTION
1	P2532001	MOTOR FAN COVER
2	P2532002	MOTOR FAN
3	P2532003	S CAPACITOR COVER
4	P2532004	S CAPACITOR 300M 125V 1-3/4 X 3-3/8
5	P2532005	JUNCTION BOX
6	P2532006	CENTRIFUGAL SWITCH 1/2-1725
7	P2532007	CONTACT PLATE
8	P2532008	BALL BEARING 6202ZZ
9	P2532009	BALL BEARING 6203ZZ
10	P2532010	R CAPACITOR COVER
11	P2532011	R CAPACITOR 30M 250V 1-1/2 X 2-3/4
12	P2532012	KEY 3/16 X 3/16 X 1-1/4



Making Wire Connections

If you are unsure how to attach wires to terminals, DO NOT continue. Contact an electrician for assistance. Connecting wires improperly may cause electrocution, fire, or a short.

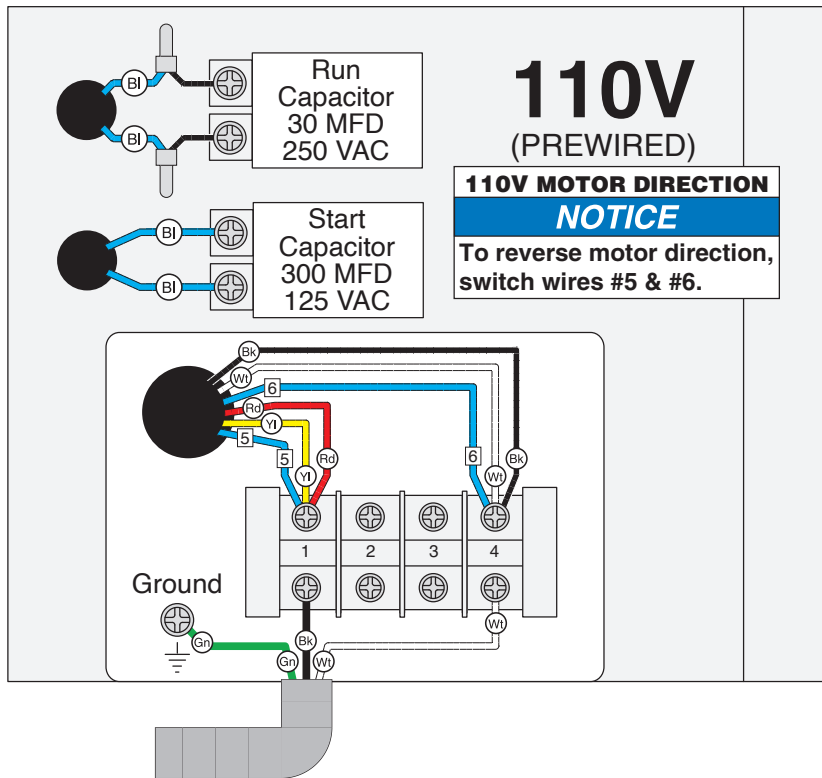


COPYRIGHT © JUNE, 2012 BY GRIZZLY INDUSTRIAL, INC., REVISED JUNE, 2024 (LW)
NO PORTION OF THIS INSTRUCTION SHEET MAY BE REPRODUCED IN ANY SHAPE
OR FORM WITHOUT THE WRITTEN APPROVAL OF GRIZZLY INDUSTRIAL, INC.
(FOR MODELS MFD. SINCE 08/24) #KN15074 PRINTED IN TAIWAN

V2.06.24

Keep for Future Reference

G2532 Wiring Diagram

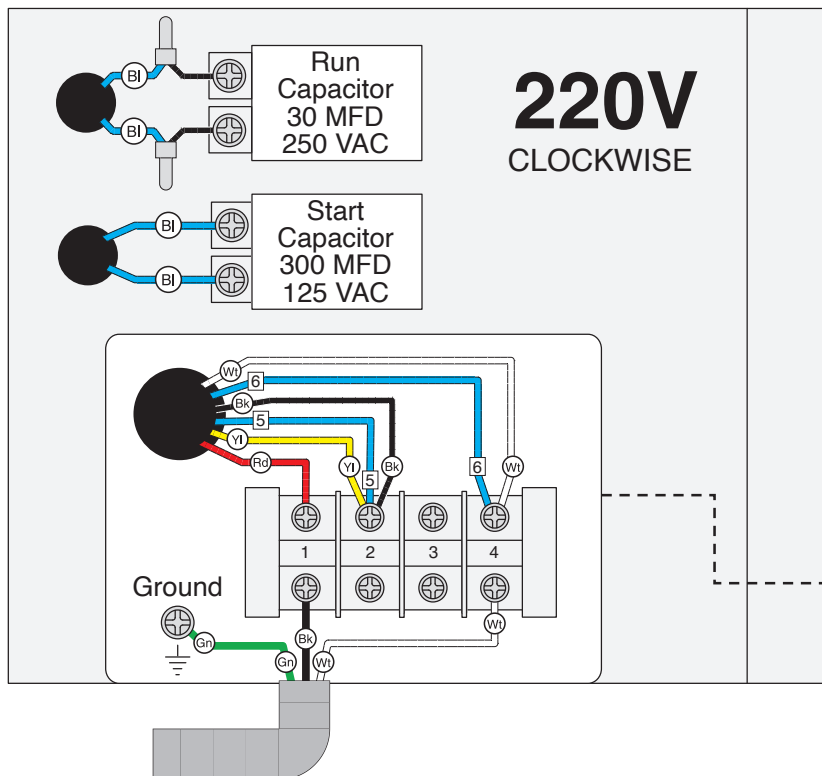


COLOR KEY

BLACK	
WHITE	
GREEN	
RED	
YELLOW	
BLUE	

NOTICE

The motor wiring shown here is current at the time of printing, but it may not match your motor. Always use the wiring diagram inside the motor junction box.



220V
COUNTERCLOCKWISE

