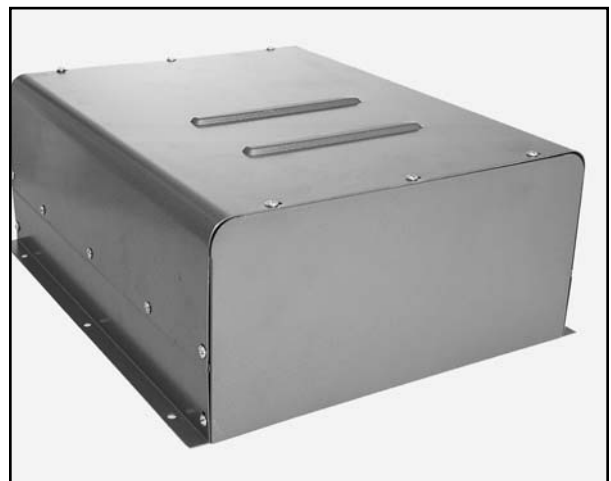


## G4223 Instructions

1. Attach sides and the bottom panel (panel with the 1" hole in it) to the cover as shown in **figure 1** using the sheet metal screws supplied. Do not tighten down the screws yet.
2. Insert the rubber grommet into the 1" dia hole in the bottom of the cover.
3. Attach the top panel as shown in **Figure 2** and tighten down all the screws.
4. Center the cover over the opening in the cabinet and mark holes for drilling. **Figure 3.** **NOTE:** If you have a saw with the switch mounted to the cabinet, make sure the flange of the cover clears the switch mounting screw holes.
5. Using a 1/8" drill bit, drill the six holes for the #8 x 1/2" self tapping screws that attach the cover to the cabinet.
6. If you have a cabinet mounted switch, unplug the saw, remove the old motor wire and replace it with 3 feet of 10-12 AWG wire. Re-route the new motor wire through the hole in the bottom of the cover.
7. Mount the cover using the six #8 x 1/2" self tapping screws supplied.



**Figure 1.**



**Figure 2.**



**Figure 3.**