

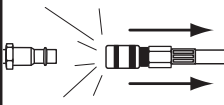


# MODEL G5350 1/2" AIR RATCHET INSTRUCTION SHEET

## ⚠ WARNING



**EYE INJURY HAZARD!**  
Always wear safety glasses during use to prevent serious personal injury!



**INJURY HAZARD!**  
Always disconnect tool from air to prevent unexpected operation during service!



**EXPLOSION HAZARD!**  
Never exceed 120 PSI!



Figure 1. Model G5350.

## Introduction

Just a squeeze of the trigger provides 50 ft/lbs. of torque! Ergonomically designed for maximum comfort, these professional quality ratchets deliver up to 160 RPM to your sockets, making them the perfect choice for home or high volume commercial work. Weighs 3 lbs.

## Inventory

- A. Air Ratchet..... 1

## Operation

Tool requires 90 PSI to operate correctly.

To improve tool lifespan, use a filter/lubricator/regulator as shown in **Figure 2**. Otherwise, lubricate daily with a couple drops of pneumatic tool oil directly into the air fitting as shown in **Figure 3**.

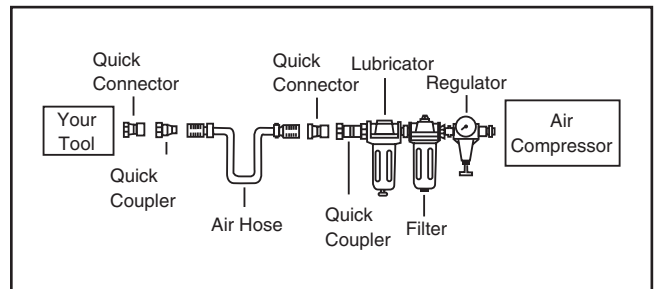


Figure 2. Installing your tool.

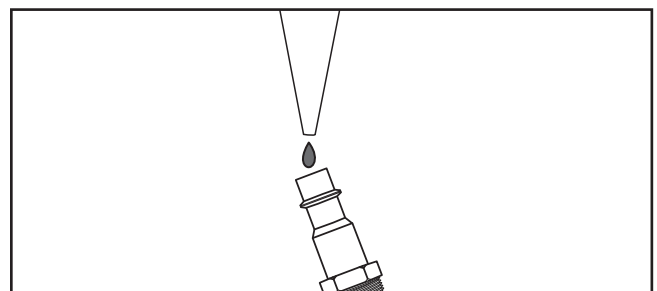


Figure 3. Lubricating directly into air fitting.

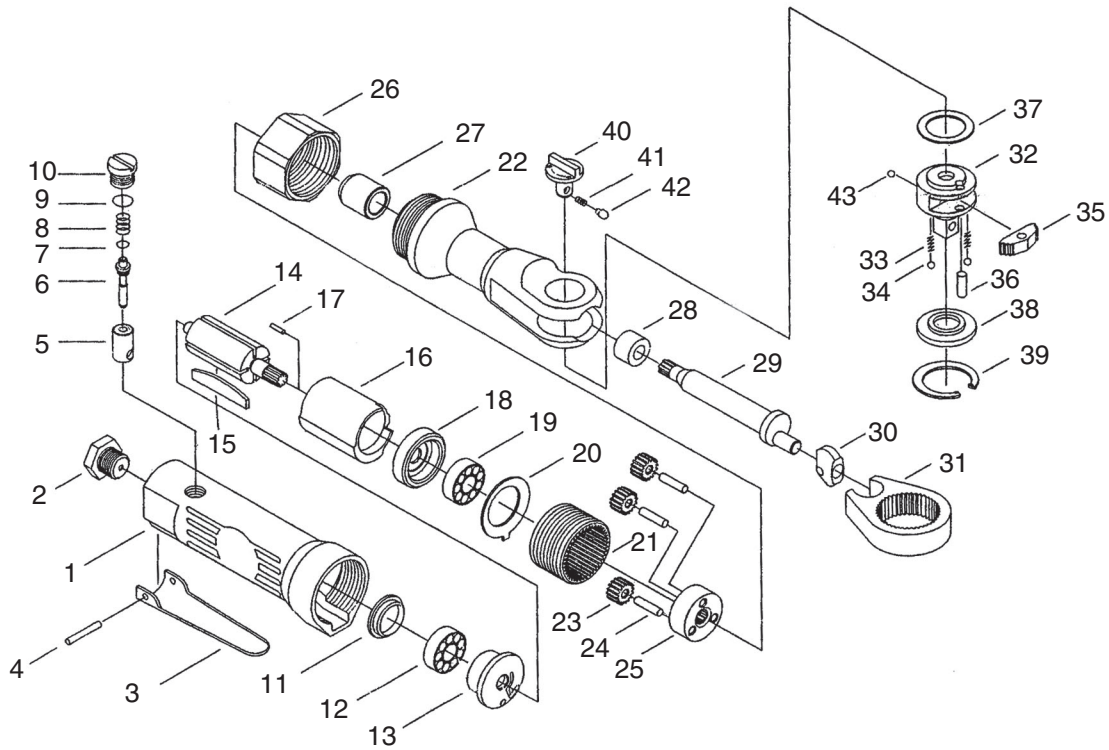
*If you need help with your new pneumatic tool, call our Tech Support at: (570) 546-9663.*

COPYRIGHT © FEBRUARY, 2006 BY GRIZZLY INDUSTRIAL, INC.

**WARNING: NO PORTION OF THIS MANUAL MAY BE REPRODUCED IN ANY SHAPE OR FORM WITHOUT THE WRITTEN APPROVAL OF GRIZZLY INDUSTRIAL, INC.**

#PC8048 PRINTED IN TAIWAN

# G5350 Parts Breakdown and List



REF	PART #	DESCRIPTION
1	P5350001	HOUSING
2	P5350002	AIR INLET
3	P5350003	THROTTLE LEVER
4	P5350004	ROLL PIN
5	P5350005	VALVE BUSHING
6	P5350006	VALVE STEM
7	P5350007	O-RING
8	P5350008	SPRING
9	P5350009	O-RING
10	P5350010	VALVE PLUG
11	P5350011	END PLATE CAP
12	P5350012	REAR BEARING
13	P5350013	REAR PLATE
14	P5350014	ROTOR
15	P5350015	ROTOR BLADE
16	P5350016	CYLINDER
17	P5350017	CYLINDER PIN
18	P5350018	FRONT PLATE
19	P5350019	FRONT BEARING
20	P5350020	WASHER
21	P5350021	THREAD RING GEAR
22	P5350022	RATCHET HOUSING

REF	PART #	DESCRIPTION
23	P5350023	IDLER GEAR
24	P5350024	IDLER GEAR PIN
25	P5350025	IDLER GEAR PLATE
26	P5350026	CLAMP NUT
27	P5350027	BUSHING
28	P5350028	BEARING
29	P5350029	CRANK SHAFT
30	P5350030	DRIVE BUSHING
31	P5350031	RATCHET YOKE
32	P5350032	RATCHET ANVIL
33	P5350033	SPRING
34	P5350034	STEEL BALL
35	P5350035	PAWL
36	P5350036	PIN
37	P5350037	WASHER
38	P5350038	THRUST WASHER
39	P5350039	RETAINER RING
40	P5350040	REVERSE BUTTON
41	P5350041	SPRING
42	P5350042	LOCK PIN
43	P5350043	STEEL BALL