

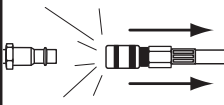


# MODEL G5784 1/2" REVERSABLE AIR DRILL INSTRUCTION SHEET

## ⚠ WARNING



**EYE INJURY HAZARD!**  
Always wear safety glasses during use to prevent serious personal injury!



**INJURY HAZARD!**  
Always disconnect tool from air to prevent unexpected operation during service!



**EXPLOSION HAZARD!**  
Never exceed 120 PSI!



Figure 1. Model G5784.

## Introduction

Large 1/2" chuck capacity in a compact drill. This 800 RPM drill features convenient thumb activated forward and reverse switch, Jacobs® chuck and key and an accessory right angle handle for those really tough drilling chores. Weighs 4 lbs.

## Inventory

- A. Reversible Air Drill ..... 1
- B. Chuck Key ..... 1
- C. Handle ..... 1
- D. Handle Ring..... 1

## Operation

Tool requires 90 PSI to operate correctly.

To improve tool lifespan, use a filter/lubricator/regulator as shown in **Figure 2**. Otherwise, lubricate daily with a couple drops of pneumatic tool oil directly into the air fitting as shown in **Figure 3**.

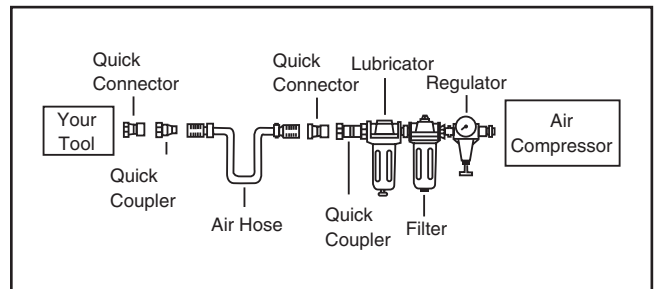


Figure 2. Installing your tool.

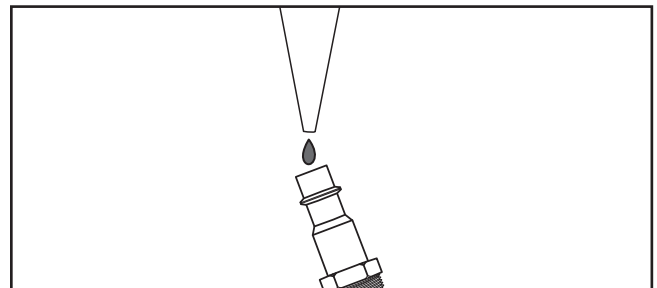


Figure 3. Lubricating directly into air fitting.

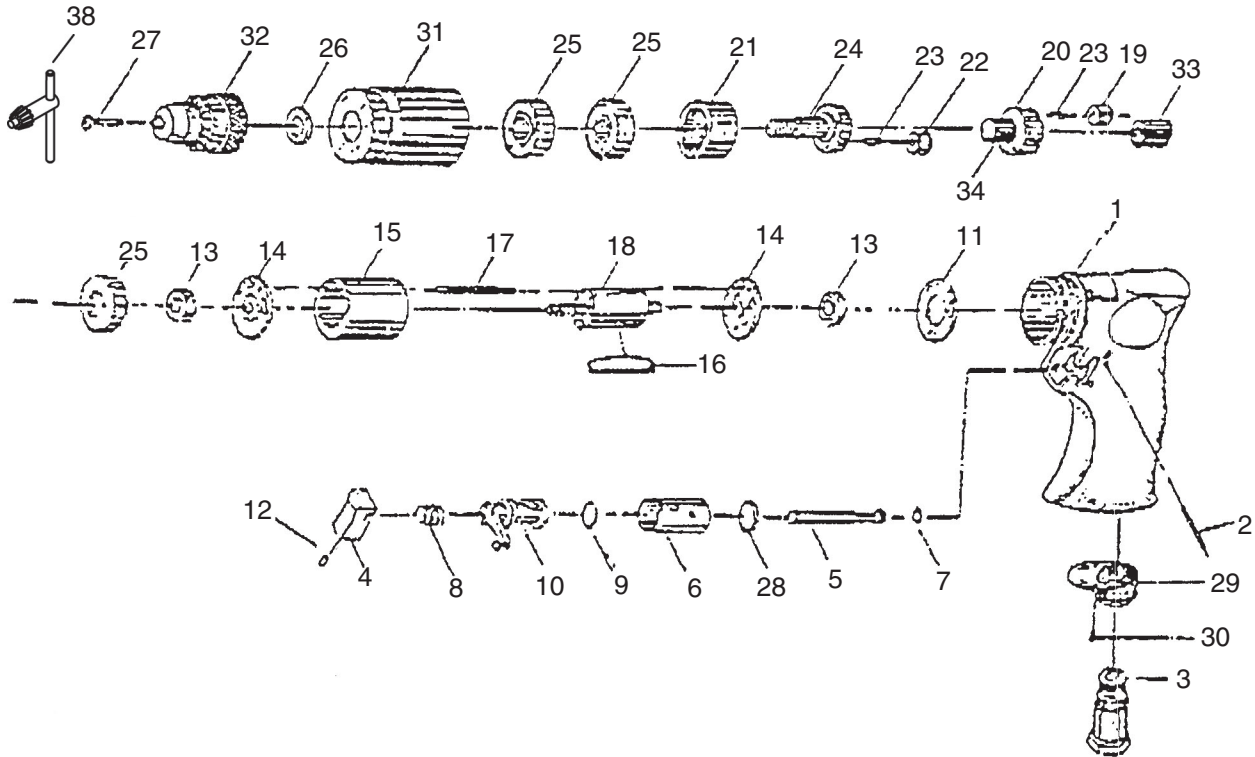
*If you need help with your new pneumatic tool, call our Tech Support at: (570) 546-9663.*

COPYRIGHT © FEBRUARY, 2006 BY GRIZZLY INDUSTRIAL, INC.

**WARNING: NO PORTION OF THIS MANUAL MAY BE REPRODUCED IN ANY SHAPE OR FORM WITHOUT THE WRITTEN APPROVAL OF GRIZZLY INDUSTRIAL, INC.**

#PC8009 PRINTED IN TAIWAN

# G5784 Parts Breakdown and List



REF	PART #	DESCRIPTION
1	P5784001	HOUSING
2	P5784002	SPRING PIN
3	P5784003	AIR INLET
4	P5784004	TRIGGER
5	P5784005	VALVE STEM
6	P5784006	REVERSE BUSHING
7	P5784007	O-RING
8	P5784008	VALVE SPRING
9	P5784009	O-RING
10	P5784010	REVERSE LEVER
11	P5784011	MOTOR GASKET
12	PSS51M	SET SCREW M4-.7 X 8
13	P626	BALL BEARING 626
14	P5784014	END PLATE
15	P5784015	CYLINDER
16	P5784016	ROTOR BLADE
17	P5784017	PIN
18	P5784018	ROTOR

REF	PART #	DESCRIPTION
19	P5784019	SPACER
20	P5784020	PLANET GEAR PLATE
21	P5784021	GEAR LINK
22	P5784022	PLANET GEAR
23	PRP60M	ROLL PIN 4 X 15
24	P5784024	PLANET LINK SPINDLE
25	P5784025	BALL BEARING
26	PW04M	FLAT WASHER 10MM
27	PSB15M	CAP SCREW M5-.8 X 20
28	P5784028	O-RING
29	P5784029	EXHAUST DIFFUSER
30	P5784030	SCREW
31	P5784031	CLAMP NUT
32	P5784032	DRILL CHUCK
33	P5784033	GEAR
34	P5784034	GEAR
37	P5784037	HANDLE (NOT SHOWN)
38	P5784038	CHUCK KEY