

Panther™

panthercarts.com

TWO WHEEL WHEELBARROW MODEL G7104 INSTRUCTION SHEET



COPYRIGHT © JUNE, 2004 BY GRIZZLY INDUSTRIAL, INC.
**WARNING: NO PORTION OF THIS MANUAL MAY BE REPRODUCED IN ANY SHAPE
OR FORM WITHOUT THE WRITTEN APPROVAL OF GRIZZLY INDUSTRIAL, INC.**
#TJ6341 PRINTED IN CHINA

PARTS INVENTORY

The Model G7104 was carefully packed when it left our warehouse. If you discover the wheelbarrow is damaged after you have signed for delivery, *please immediately call Customer Service at (570) 546-9663 for advice.*

Save the containers and all packing materials for possible inspection by the carrier or its agent. *Otherwise, filing a freight claim can be difficult.*

When you are completely satisfied with the condition of your shipment, you should inventory the contents.

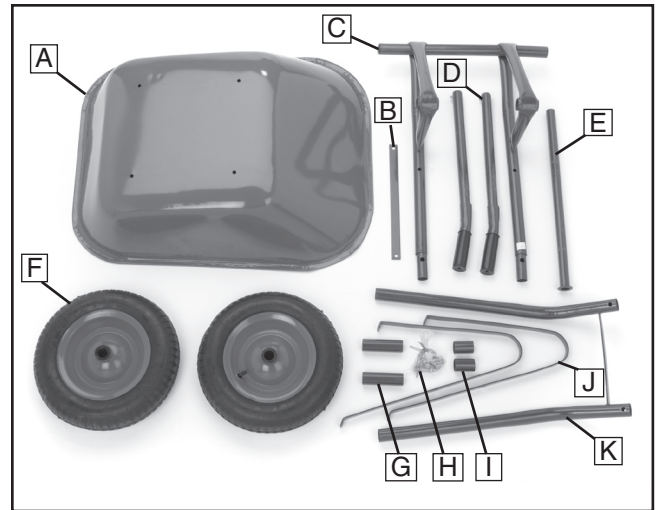


Figure 1. Main contents.

Figure 1 - Main Contents.

A.	Bucket	1
B.	Rail	1
C.	Front Frame.....	1
D.	Handle	2
E.	Axle	1
F.	Tire 3.50 - 8.....	2
G.	Long Spacer	2
H.	Bolt Bag.....	1
I.	Short Spacer	2
J.	Leg	2
K.	Back Frame	1

Figure 2 - Bolt Bag.

L.	Bolt M8-1.25 X 50.....	4
M.	Flat Washer 26mm	1
N.	Bolt M8-1.25 X 20.....	2
O.	Hex Nut M8-1.25	6
P.	Cotter Pin	1
Q.	Flat Washer 8mm	6
R.	Lock Washer 8mm	6

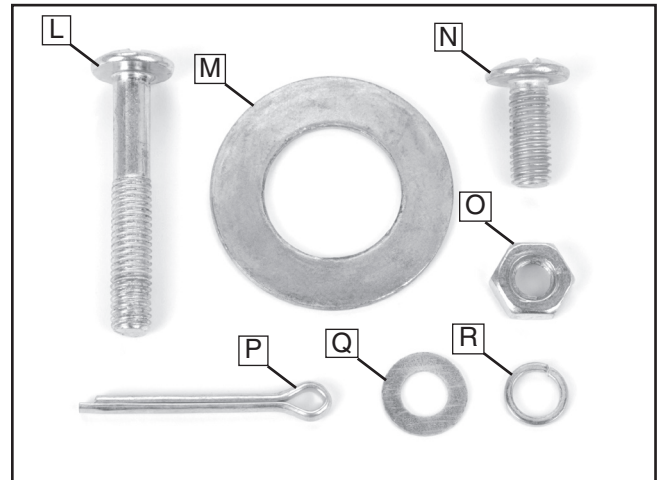


Figure 2. Bolt bag contents.

CAUTION

Adult supervision is always required while this wheelbarrow is being used by children.

ASSEMBLY INSTRUCTIONS

MOUNTING FRAME & LEGS

1. Slide the back frame onto front frame and stand the bucket and frame on end (see **Figure 3**).
2. Bolt the legs, frame, and bucket together using M8-1.25 X 50 bolts, flat washers, lock washers and hex nuts.
3. Attach the rail to the legs using M8-1.25 X 20 Bolts, flat washers, lock washers and hex nuts (**Figure 3**).

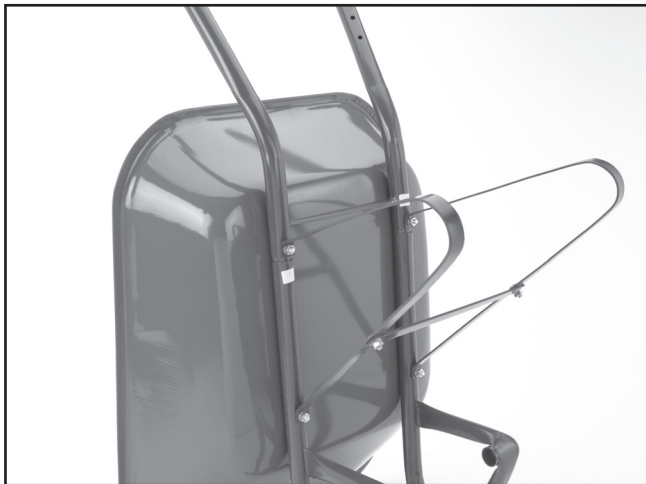


Figure 3. Frame, legs and rail attached to bucket.

ATTACHING DOUBLE WHEEL

1. Insert the axle into a wheel then slide it into both wheel struts on the front frame.
2. Slide the second wheel onto the axle.
3. Slide a 26mm washer onto the axle, then insert and spread the cotter pin (**Figure 4**).



Figure 4. Wheels and axle mounted to front frame.

ATTACHING SINGLE WHEEL (OPTIONAL)

1. Slide one long spacer onto the axle then insert the axle part way into the wheel strut on the front frame.
2. Slide a short spacer, wheel and the second short spacer onto the axle, then push the axle through second wheel strut.
3. Slide the remaining long spacer and 26mm washer onto axle then insert and spread the cotter pin (**Figure 5**).



Figure 5. Single wheel, spacers and axle mounted to front frame.

ATTACHING HANDLES

1. Insert handles into slots on the back section of the frame.
2. Push handles in to desired length and align locking pins with the corresponding holes (**Figure 6**).

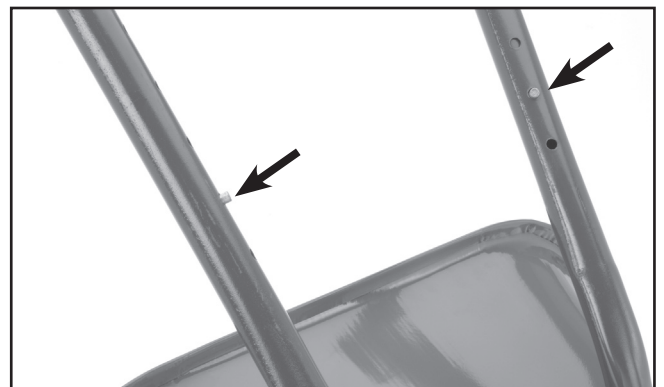
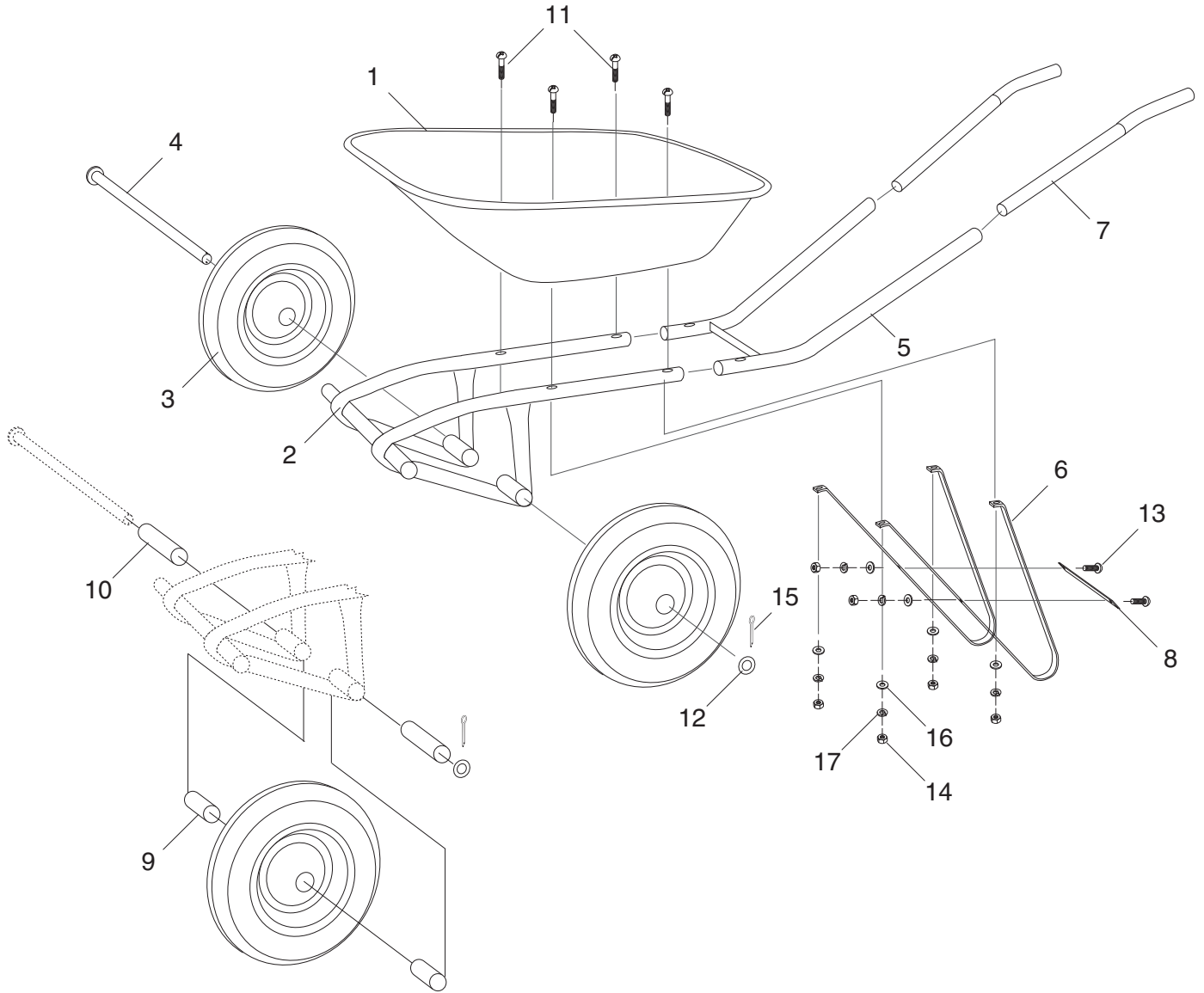


Figure 6. Handles attached to back frame.

G7104 Parts Breakdown and List



REF	PART#	DESCRIPTION
1	P7104001	BUCKET
2	P7104002	FRONT FRAME
3	P7104003	WHEEL W/ HUB, TIRE, TUBE
4	P7104004	AXLE
5	P7104005	BACK FRAME
6	P7104006	LEG
7	P7104007	HANDLE
8	P7104008	RAIL
9	P7104009	SHORT SPACER 1 1/8" X 2"

REF	PART#	DESCRIPTION
10	P7104010	LONG SPACER 1 1/8" X 4"
11	PS88M	PHLP HD SCREW M8-1.25 X 50
12	P7104012	FLAT WASHER 26MM
13	PS04M	PHLP HD SCREW M8-1.25 X 20
14	PN03M	HEX NUT M8-1.25
15	P7104015	COTTER PIN
16	PW01M	FLAT WASHER 8MM
17	PLW04M	LOCK WASHER 8MM