




MODEL G8155 NURSERY DOUBLE CART INSTRUCTIONS

(FOR MODELS MANUFACTURED AFTER 3/05)



⚠ WARNING
SUFFOCATION HAZARD!
Immediately discard all plastic bags and packing materials to eliminate choking/suffocation hazards for children and animals.

Specifications

Cart Size (L x W x H) 38½" x 20½" x 32"
 Pneumatic Wheel Size (H x W) 10" x 3½"
 Payload Capacity Each Bed 175 lbs.
 Total Load Capacity 350 lbs.
 Net Weight 68 lbs.

Inventory: Figure 1.

Qty

A.	Shelf	1
B.	Bed	1
C.	Shelf Supports.....	4
D.	Pneumatic Wheels	4
E.	Handle	1
F.	Receiver Bracket.....	1
G.	Handle Joint	1
H.	Steering Axle Assembly	1
I.	Tag Axle Assembly	1
J.	Tag Axle Strut Set.....	1
K.	Center Strut.....	1
L.	Steering Axle Tie Bar	1
M.	Axle and Strut Bolt Bag.....	1
	—Hex Bolt M8-1.25 x 60 (Handle Joint)	1
	—Locking Hex Nut M8-1.25 (Handle Joint) 1	
	—Flat Washer 8mm (Handle Joint).....	1
	—Hex Bolt M8-1.25 x 25 (Center Strut).....	1
	—Locking Hex Nut M8-1.25 (Center Strut) 1	
	—Flat Washer 8mm (Center Strut)	1
	—Hex Bolts M8-1.25 x 18 (Axles).....	13

- Locking Hex Nuts M8-1.25 (Axles)..... 13
- Flat Washers 8mm (Axles) 13
- N.** Shelf and Support Bolt Bags..... 2
- Hex Bolts M6-1 x 15 (Shelf/Supports) .. 16
- Hex Nuts M6-1 (Shelf/Supports)..... 16
- Flat Washers 6mm (Shelf/Supports) 32
- Lock Washers 6mm (Shelf/Supports)... 16

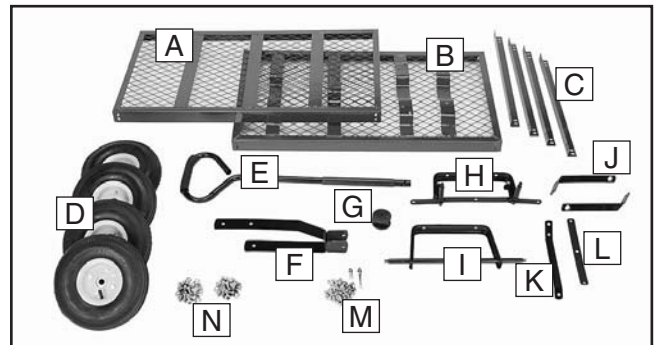


Figure 1. Inventory.

If any nonproprietary parts are missing (e.g. a nut or a washer), we will gladly replace them; or for the sake of expediency, replacements can be obtained at your local hardware store. *If you need help with your new item, call our Tech Support at: (570) 546-9663.*

⚠ CAUTION

Never carry people or animals in this cart. Adult supervision is mandatory while this wagon is being used by children. Do not attempt to modify this cart to increase load capacity or overinflate the tires. Do not load this cart in a manner where the cart will become top heavy and fall over when pulling. Do not use this cart on an Incline.

COPYRIGHT © JULY, 2004 BY GRIZZLY INDUSTRIAL, INC. REVISED JUNE 2009 (CR)

WARNING: NO PORTION OF THIS MANUAL MAY BE REPRODUCED IN ANY SHAPE OR FORM WITHOUT THE WRITTEN APPROVAL OF GRIZZLY INDUSTRIAL, INC.

#CR6365 PRINTED IN CHINA

Assembly

To assemble the cart:

1. Slip the struts onto the axle shaft in the position shown in **Figure 2**, and secure the struts and tag axle support to the frame with six M8-1.25 x 18 hex bolts, 8mm flat washers, and M8-1.25 locking nuts.

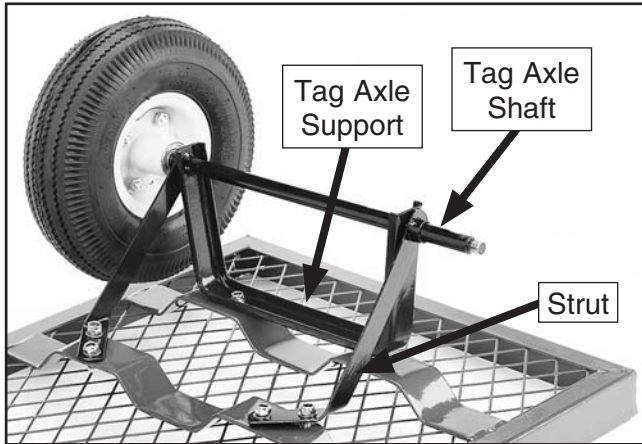


Figure 2. Tag axle and wheel installation.

2. Slide two wheels onto the axles, and secure each wheel to the axle with a 12mm flat washer, 12mm lock washer, and the M12-1.75 acorn nut (**Figure 2**).
3. Connect the receiver and the center strut to the steering axle with the M8-1.25 x 25 hex bolt, 8mm flat washer, and M8-1.25 locking nut (**Figure 3**).

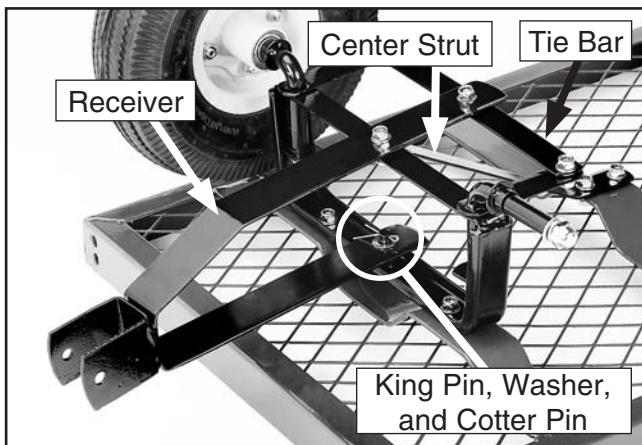


Figure 3. Steering axle.

4. Place the 10mm flat washer onto the king pin and retain it with the cotter pin (**Figure 3**).

5. Secure the tie bar to the steering axle and fasten the axle assembly to the frame with four M8-1.25 x 18 hex bolts, 8mm flat washers, and M8-1.25 locking nuts (**Figure 3**).
6. Slide two wheels onto the axles, and secure each in place with a 12mm flat washer, lock washer, and the acorn nut (**Figure 3**).
7. Insert the handle into the handle joint, then insert the joint into the receiver. Secure the assembly in place with the M8-1.25 x 60 hex bolt, 8mm flat washer, and M8-1.25 locking nut (**Figure 4**).

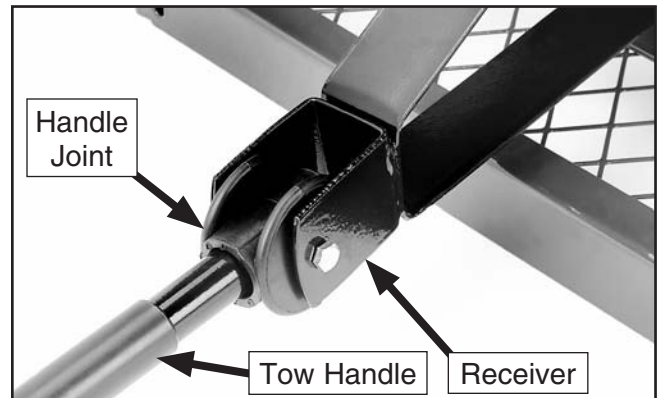


Figure 4. Tow handle.

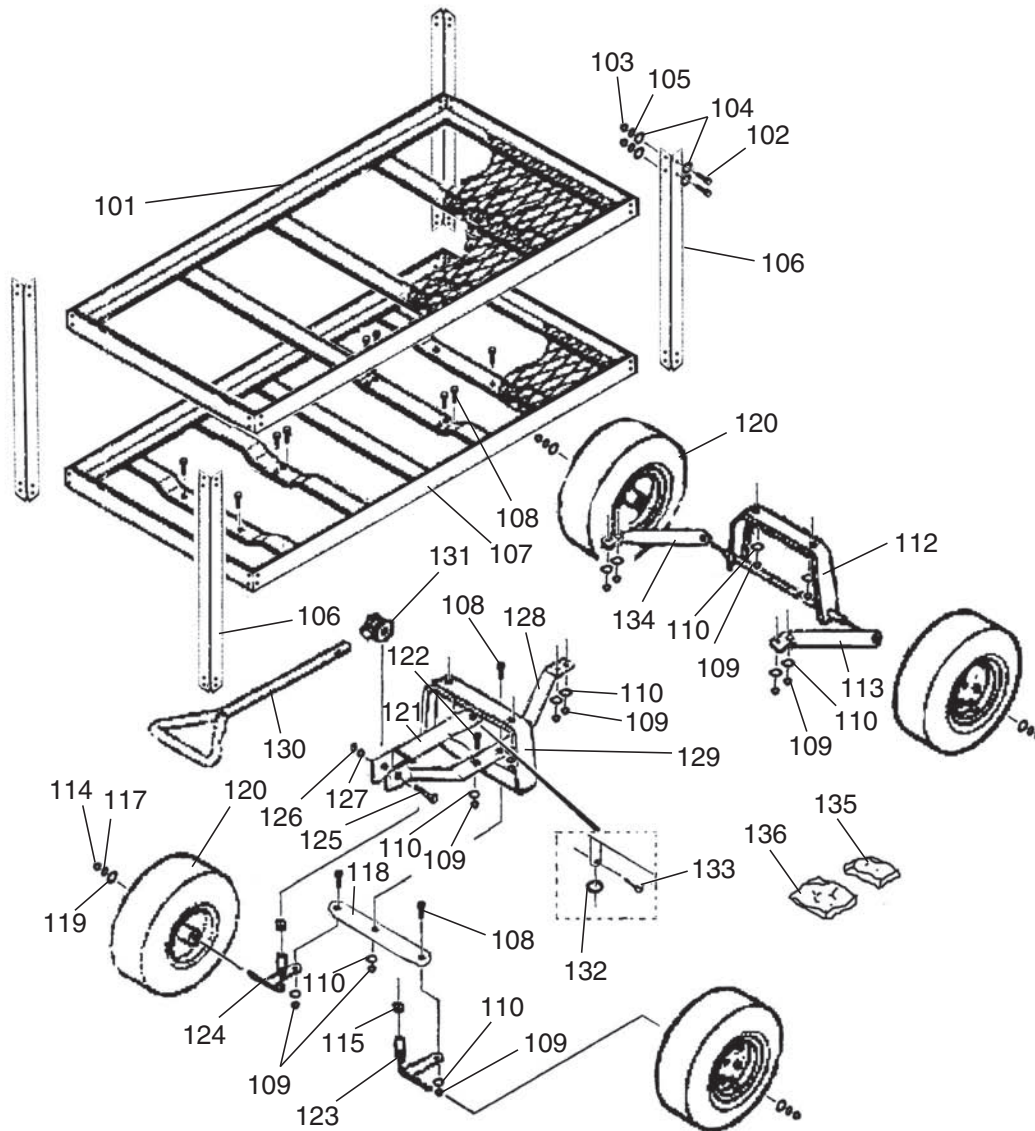
8. Position the cart on its wheels, and install the top shelf and side supports with the remaining M6-1 x 15 hex bolts, 6mm flat washers, lock washers, and M6-1 nuts (**Figure 5**).



Figure 5. Top shelf.

9. Make sure the tires are inflated to the pressure indicated on the tire sidewall. If inflation is required, only use a hand pump. **DO NOT USE HIGH PRESSURE SHOP AIR, OR TIRE EXPLOSION COULD OCCUR!**

Parts



REF	PART #	DESCRIPTION
101	P8155101	TOP SHELF
102	PB18M	HEX BOLT M6-1 X 15
103	PN01M	HEX NUT M6-1
104	PW03M	FLAT WASHER 6MM
105	PLW03M	LOCK WASHER 6MM
106	P8155106	SHELF SUPPORT
107	P8155107	BED
108	PB85M	HEX BOLT M8-1.25 X 18
109	PLN04M	LOCK NUT M8-1.25
110	PW01M	FLAT WASHER 8MM
112	P8155112	REAR AXLE W/SUPPORT
113	P8155113	REAR AXLE LEFT STRUT
114	PN26M	ACORN NUT M12-1.75
115	PN09M	HEX NUT M12-1.75
117	PLW05M	LOCK WASHER 12MM
118	P8155118	TIE BAR
119	PW06M	FLAT WASHER 12MM

REF	PART #	DESCRIPTION
120	P8155120	WHEEL 4.1 X 3.5-4
121	P8155121	RECIEVER
122	PB07M	HEX BOLT M8-1.25 X 25
123	P8155123	LEFT STEERING SPINDLE
124	P8155124	RIGHT STEERING SPINDLE
125	PB28M	HEX BOLT M8-1.25 X 60
126	PLN04M	LOCK NUT M8-1.25
127	PW01M	FLAT WASHER 8MM
128	P8155128	CENTER STRUT
129	P8155129	STEERING AXLE SUPPORT
130	P8155130	HANDLE
131	P8155131	HANDLE JOINT
132	PW04M	FLAT WASHER 10MM
133	P8155133	COTTER PIN 3 X 25MM
134	P8155134	REAR AXLE RIGHT STRUT
135	P8155135	AXLE AND STRUT BOLT BAG
136	P8155136	SHELF AND SUPPORT BOLT BAG

grizzly.com[®]

TOOL WEBSITE

Buy Direct and Save with Grizzly[®] – Trusted, Proven and a Great Value!
~Since 1983~

*Visit Our Website Today For
Current Specials!*

**ORDER
24 HOURS A DAY!
1-800-523-4777**

