



MODEL G8718/G8719 COME-ALONG INSTRUCTIONS

Introduction

The Model G8718/G8719 Come-Along is a handy tool for use in farming, camping, hunting, and emergencies. Both models feature solid steel construction, ratcheting and locking levers, drop-forged steel safety hooks, and a non-slip handle grip.

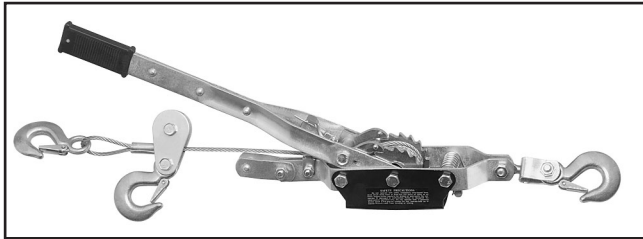


Figure 1. Model G8719 come-along.

Specifications

Model G8718 Come-Along:

Cable Configuration.....Double-Line
Cable Diameter 3/16"
Pulling Length.....47"
Pulling Capacity..... 4000 lbs. Rolling Load

Model G8719 Come-Along:

Cable Configuration..... Single & Double-Line
Cable Diameter 1/4"
Pulling Length:
—Single-Line98"
—Double-Line49"
Pulling Capacity:
—Single-Line 4000 lbs. Rolling Load
—Double-Line 8000 lbs. Rolling Load

If you need help with your new item, call our Tech Support at: (570) 546-9663.

⚠️WARNING

- LOAD CAPACITY.** Always be aware of the rated capacity of your come-along setup and the pulling weight of the load. **DO NOT** exceed this capacity when pulling a load.
- CABLE BIND.** To ensure the cable does not bind or kink, avoid twisting or bending the cable. **DO NOT** wrap the cable around any object and hook it back on itself, or pull the cable over or around a corner.
- COME-ALONG CONDITION.** **DO NOT** operate the come-along if any part of it is damaged or inoperable. A failed come-along can unexpectedly release cable tension causing serious property damage and personal injury.
- KEEP CABLE PATH CLEAR.** To avoid entanglement with the cable, always make sure the path between the load and the come-along is clear of people, animals, and obstructions. An unexpected release of cable tension can cause property damage or serious personal injury.
- HAND POWER ONLY.** Using a powered device or a device to lengthen the handle may damage the come-along.
- USE COME-ALONG AS DESIGNED.** **DO NOT** use the come-along as a hoist, lifting, or for any purpose that it is not designed for. The come-along is **NOT** a lifting or towing device and may break or cause serious personal injury when used in this manner.

COPYRIGHT © JUNE, 2007 BY GRIZZLY INDUSTRIAL, INC.

WARNING: NO PORTION OF THIS MANUAL MAY BE REPRODUCED IN ANY SHAPE OR FORM WITHOUT THE WRITTEN APPROVAL OF GRIZZLY INDUSTRIAL, INC.

#TS8466 PRINTED IN CHINA

Identification

Use **Figures 2–3** and the following descriptions to become familiar with the components of your come-along.

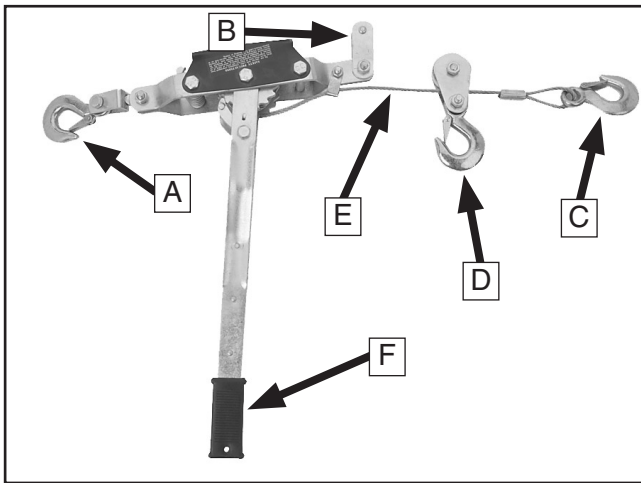


Figure 2. Hooks and main body (Model G8719 shown).

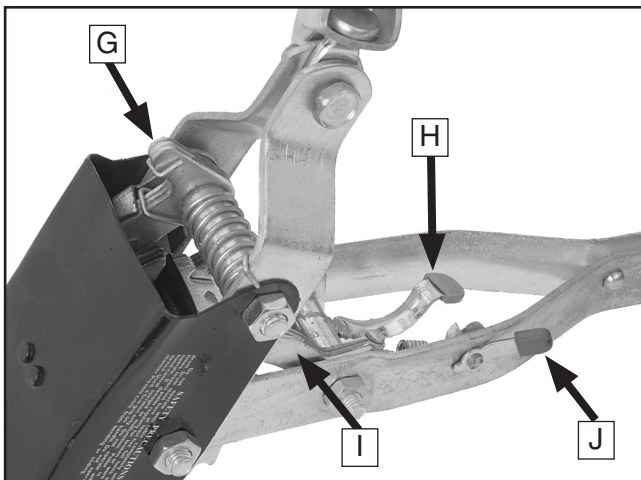


Figure 3. Levers and ratchets.

- A. Stationary Hook:** Attach this hook to a secure object that is able to withstand the tension of the pulling operation.
- B. Hanger:** Hook the 1st hook to this hanger when setting up for double-line pulling (Model G8719 only).
- C. 1st Hook:** Use this hook for single-line pulling or, for the Model G8719, connect it to the hanger for double-line pulling.
- D. 2nd Hook:** Use this hook for attaching to the load in a double-line setup (Model G8719 only).

Note: *Because the Model G8718 is pre-configured as a double-line come-along, it has only a 1st hook.*
- E. Pulling Cable:** This cable connects the come-along and the load.
- F. Handle:** Use this handle to wind up the cable and pull the load in.
- G. Drum Safety Pawl Lever:** Pull back on this lever to release the winding drum safety ratchet so that the cable can be pulled out of the come-along. When released, the drum safety pawl will spring back and engage the winding drum ratchet.

⚠ WARNING

Use the drum safety pawl lever **ONLY** when the cable is **NOT** under tension or the pulled load is in a stable location and will not move when cable tension is released. Releasing the drum safety ratchet when the come-along is under dynamic tension can cause the cable to whip at a high rate of speed causing property damage or serious personal injury.

- H. Winding Ratchet Lever:** Press down on this lever to disengage the winding pawl from the winding drum ratchet.
- I. Winding Pawl:** This device engages the winding drum ratchet and enables the handle to wind the cable back into the come-along.
- J. Winding Pawl Lock:** Use this lever to lock the winding pawl in position when it is engaged with the winding drum ratchet.



Pulling Capacity

When all other conditions of the pulling operation remain the same, pulling capacity reduces as the incline increases. For example, if your come-along is rated at 4000 lbs. rolling load capacity at 0° incline, the pulling capacity can reduce to 1000 lbs. as you increase to a 45° incline (see **Figure 4**).

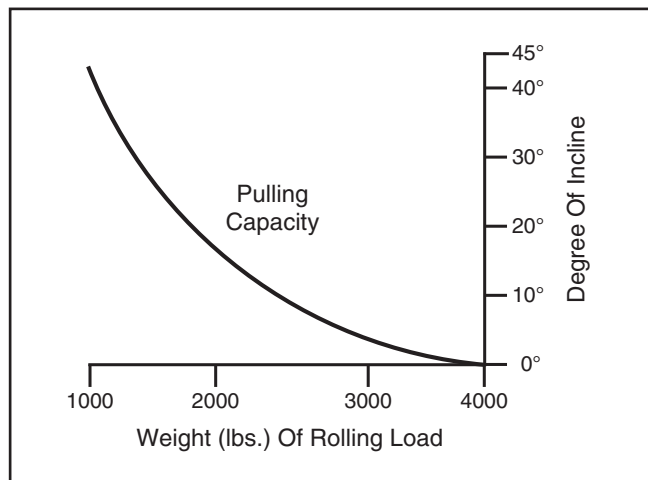


Figure 4. Example of pulling capacity reducing as incline increases.

The conditions of your operation directly affect the pulling capacity of your come-along. For instance, the initial pulling capacity may be reduced if the load does not have wheels and is at a "dead stop." Conversely, the pulling capacity can increase when pulling a floating object across water.

NOTICE

The rated pulling capacity of your come-along will vary with the conditions of your operation. Always be aware of these conditions when calculating the pulling weight of the load.

Single and Double-Line Setups

A **single-line** setup is when the hook at the end of the pulling cable is connected to an attachment accessory, such as a sling or eyebolt, of the load. See **Figure 5** for a few typical examples.

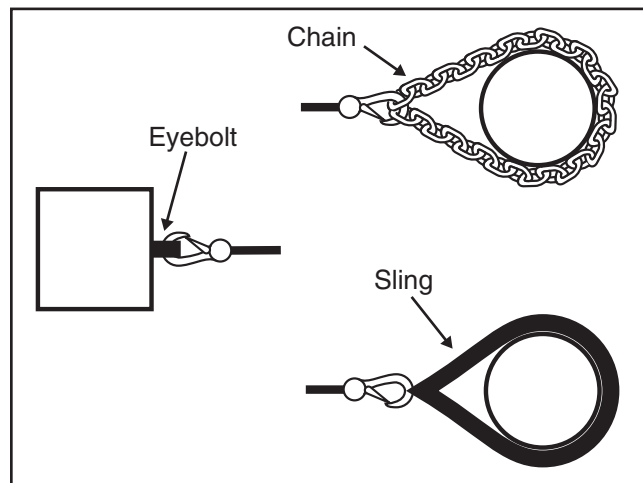


Figure 5. Examples of come-along hook up to load.

In a **double-line** setup, the pulling cable is doubled back to the come-along body and forms a loop. This configuration doubles the pulling capacity of the come-along.

The Model G8718 is pre-configured as a double-line come-along.

To configure the Model G8719 come-along for a double-line setup, connect the hook at the end of the pulling cable (1st hook) onto the hanger, as shown in **Figure 6**. The hook in the middle of the pulling cable (2nd hook) becomes the end hook of the pulling cable, and will attach to the load as shown in **Figure 5**.

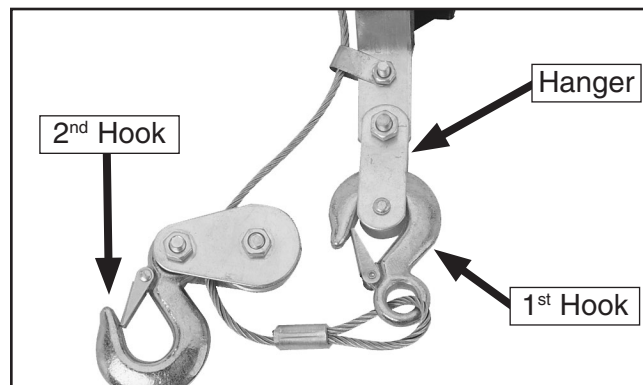


Figure 6. Double-line setup (Model G8719 only).



Operation

1. Read and understand this manual and all safety warnings.
2. Put on thick leather gloves and safety glasses.
3. Determine the pulling weight of your load and make sure your come-along setup is adequate for the job.
4. Use the stationary hook to attach the come-along to a non-moveable object that will adequately withstand the tension of the pulling operation.
5. Pull back on the drum safety release lever and pull out the necessary length of cable to hookup the load.
6. Mount a chain, sling, eyebolt, or other adequate attachment accessory securely to your load.
7. Connect the end hook of the pulling cable to the attachment device on the load.
8. Make sure the winding pawl is engaged with the winding drum ratchet, and the winding ratchet lever is locked in position with the ratchet lock.
9. Pump the handle back and forth to wind the pulling cable onto the winding drum.
10. When your load has reached its destination, make sure that it is supported so that it will not move when the cable tension is released on the come-along.
11. Unlock the winding ratchet lever, pull back on the drum safety release lever, and pull out enough cable so that you can unhook the end hook from the load.

Maintenance

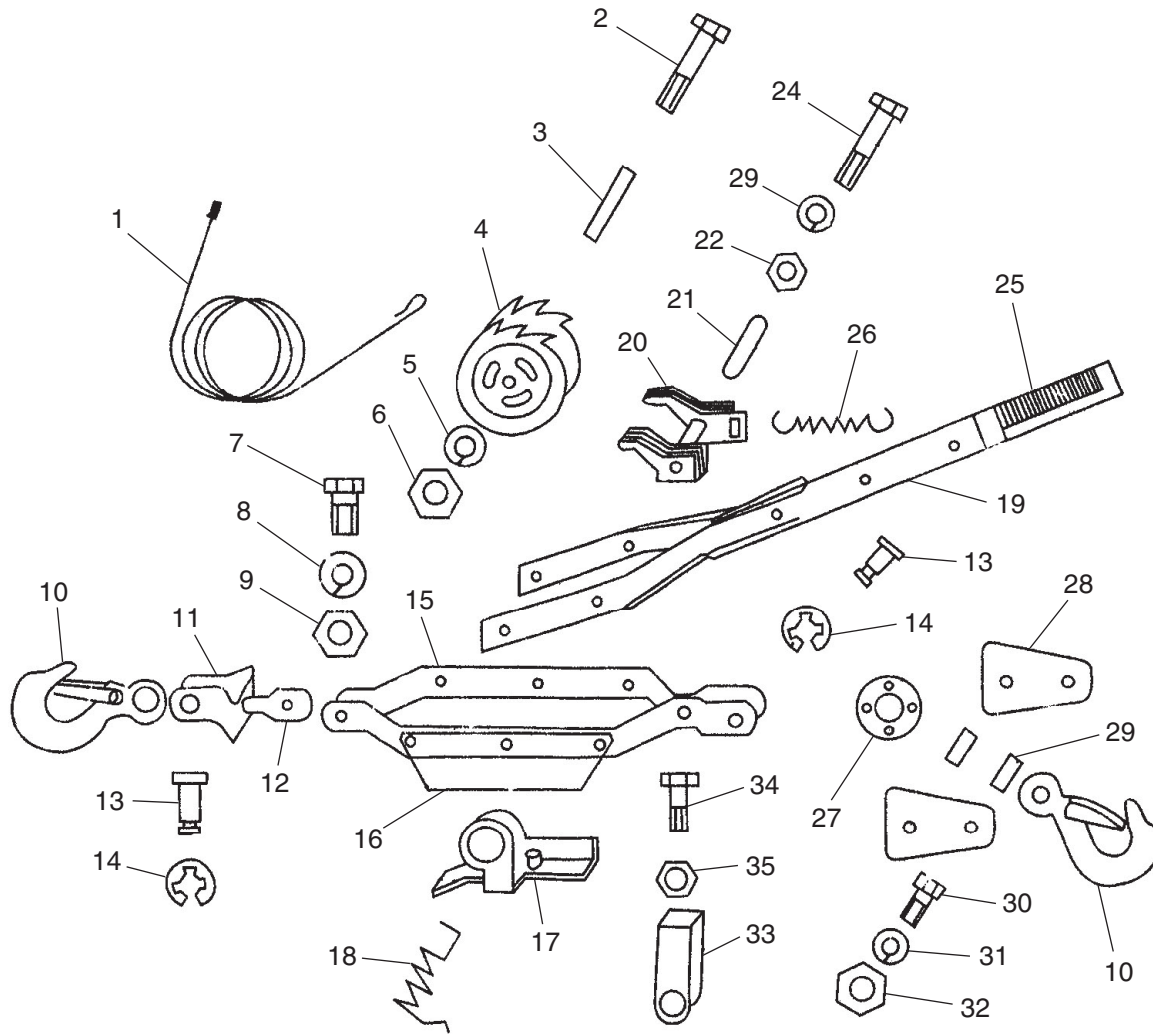
- Use a light machine oil on the pivot points of the winding drum, levers, and ratchets as needed.
- Before each use, check the pulling cable for kinks, irregular bends, or fraying. If the cable is damaged, replace it before using the come-along.
- Always keep the pulling cable tight and fully wound into the winding drum when not in use.
- Store your come-along in a dry place to avoid rust.

WARNING

Before each use, examine the come-along, pulling cable, and hooks for any damage. When under the tension of pulling a load, a damaged come-along can fail leading to property damage, serious personal injury, or death.



G8718 Parts Breakdown and List

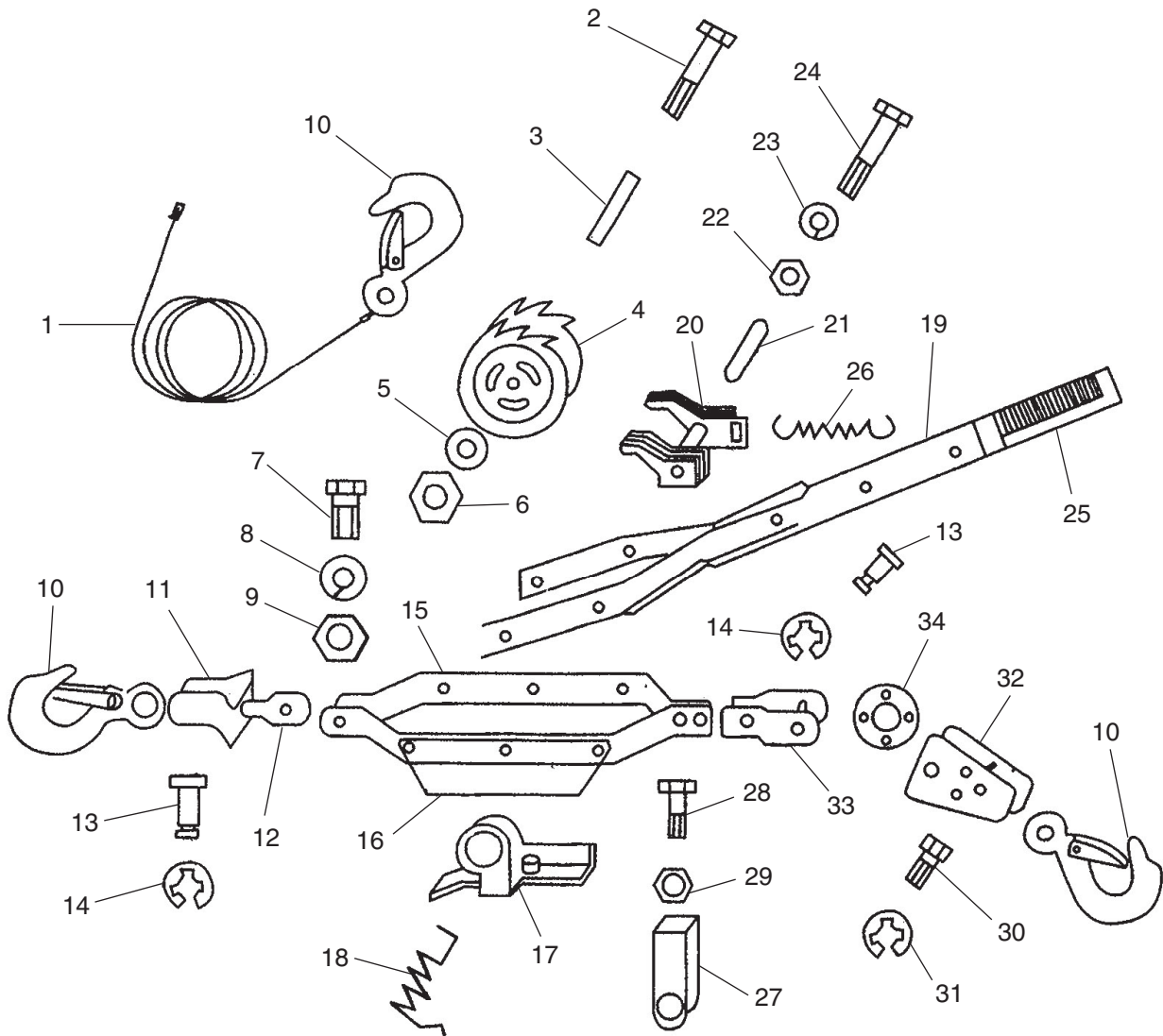


REF	PART #	DESCRIPTION
1	P8718001	CABLE 3/16"
2	PB164M	HEX BOLT M8-1.25 X 70
3	P8718003	CASING PIPE
4	P8718004	DOUBLE RATCHET WHEEL
5	PLW04M	LOCK WASHER 8MM
6	PN03M	HEX NUT M8-1.25
7	PB07M	HEX BOLT M8-1.25 X 25
8	PLW04M	LOCK WASHER 8MM
9	PN03M	HEX NUT M8-1.25
10	P8718010	HOOK
11	P8718011	HANGER
12	P8718012	HANGER JOINT
13	P8718013	HANGER PIN
14	PEC09M	E-CLIP 6MM
15	P8718015	FRAME
16	P8718016	COVER
17	P8718017	SAFETY PAWL
18	P8718018	SAFETY PAWL SPRING

REF	PART #	DESCRIPTION
19	P8718019	HANDLE
20	P8718020	WINDING PAWL
21	P8718021	CASING PIPE
22	PN01M	HEX NUT M6-1
23	PLW03M	LOCK WASHER 6MM
24	PB119M	HEX BOLT M6-1 X 60
25	P8718025	HANDLE GRIP
26	P8718026	WINDING PAWL SPRING
27	P8718027	HANGER PULLEY
28	P8718028	HANGER PLATE
29	P8718029	BUSHING
30	PB07M	HEX BOLT M8-1.25 X 25
31	PLW04M	LOCK WASHER 8MM
32	PN03M	HEX NUT M8-1.25
33	P8718033	GUIDE CLIP
34	PB18M	HEX BOLT M6-1 X 14
35	PN01M	HEX NUT M6-1



G8719 Parts Breakdown and List



REF	PART #	DESCRIPTION
1	P8719001	CABLE 1/4"
2	PB162M	HEX BOLT M10-1.5 X 90
3	P8719003	CASING PIPE
4	P8719004	DOUBLE RATCHET WHEEL
5	PLW06M	LOCK WASHER 10MM
6	PN02M	HEX NUT M10-1.5
7	PB32M	HEX BOLT M10-1.5 X 25
8	PLW06M	LOCK WASHER 10MM
9	PN02M	HEX NUT M10-1.5
10	P8719010	HOOK
11	P8719011	HANGER
12	P8719012	HANGER JOINT
13	P8719013	HANGER PIN
14	PEC015M	E-CLIP 8MM
15	P8719015	FRAME
16	P8719016	COVER
17	P8719017	SAFETY PAWL

REF	PART #	DESCRIPTION
18	P8719018	SAFETY PAWL SPRING
19	P8719019	HANDLE
20	P8719020	WINDING PAWL
21	P8719021	CASING PIPE
22	PN02M	HEX NUT M10-1.5
23	PLW06M	LOCK WASHER 10MM
24	PB13M	HEX BOLT M10-1.5 X 80
25	P8719025	HANDLE GRIP
26	P8719026	WINDING PAWL SPRING
27	P8719027	GUIDE CLIP
28	PB09M	HEX BOLT M8-1.25 X 20
29	PN03M	HEX NUT M8-1.25
30	P8719030	HANGER PIN
31	PEC015M	E-CLIP 8MM
32	P8719032	HANGER
33	P8719033	HANGER CONNECTOR
34	P8719034	HANGER PULLEY

