



MODEL H0584 DUAL ACTION SANDER INSTRUCTION SHEET

⚠️ WARNING



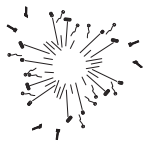
EYE INJURY HAZARD!
Always wear safety glasses when using this tool to prevent serious personal injury.



DUST HAZARD!
Always wear respirator when using this tool.



INJURY HAZARD!
Always disconnect tool from air to prevent unexpected operation during service.



DO NOT EXCEED 120 PSI!
Personal injury could occur.

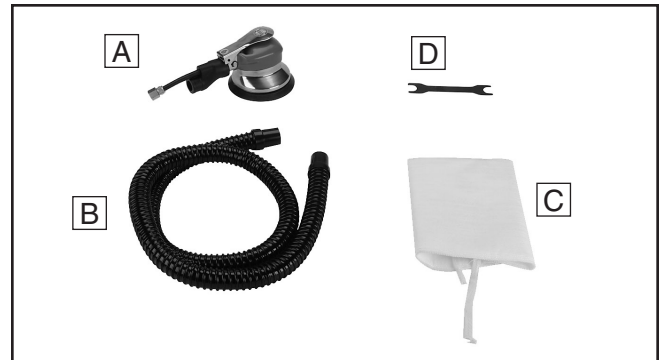


Figure 1. Model H0584 inventory.

Assembly

To assemble the Model H0584:

1. Install a 1/4" NPT male quick-connect fitting (not included) into the sander hose.
2. Attach a 5" hook and loop sanding disc to the sanding pad as shown in **Figure 2**.



Figure 2. Attaching sanding disc.

Product Information

- 6,000 RPM
- Requires 90 PSI
- Requires 12 CFM
- Requires 5" hook and loop sanding disc
- 1/4" NPT air inlet
- Weighs 4 lbs.

Inventory

A.	Air Sander	1
B.	Plastic Hose	1
C.	Dust Collection Bag.....	1
D.	Wrench	1

3. Attach the plastic hose to the sander as shown in **Figure 3A**, insert the plastic hose into the dust collection bag, and secure with the strings (**Figure 3B**).

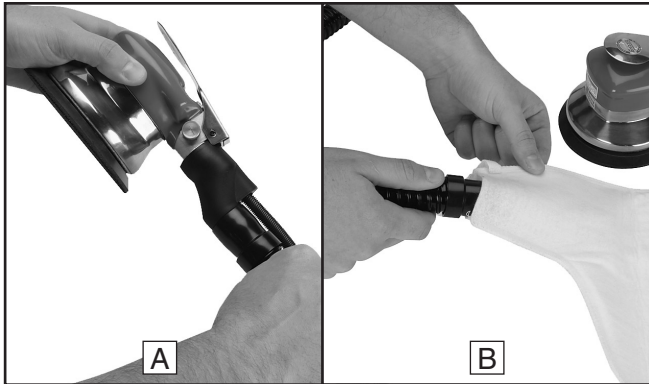


Figure 3. Attaching plastic hose to sander and dust collection bag.

Operation

To operate the sander:

1. Plug the tool into compressed air.
2. Hold the sander and press the throttle lever (**Figure 4**) to operate the sander.

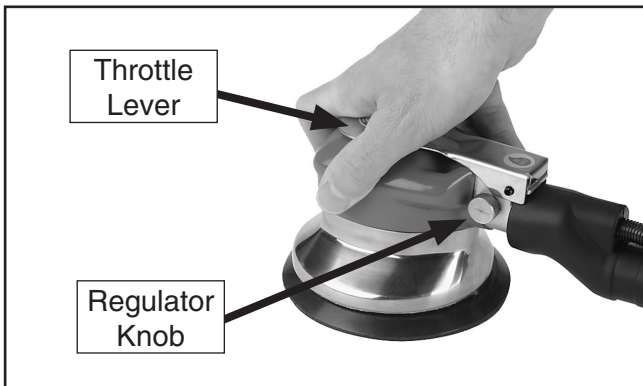


Figure 4. Sander controls.

3. Turn the regulator knob (**Figure 4**) to adjust the speed of the sanding disc.
4. Remove pressure on the throttle lever to stop the sander.
5. When the sandpaper loses its effectiveness, **disconnect the tool**, remove sandpaper from the pad, and replace with a new disc.

Maintenance

Lubricate at the beginning of the sanding task. Place one or two drops of pneumatic tool oil directly into the air fitting as shown in **Figure 5**.

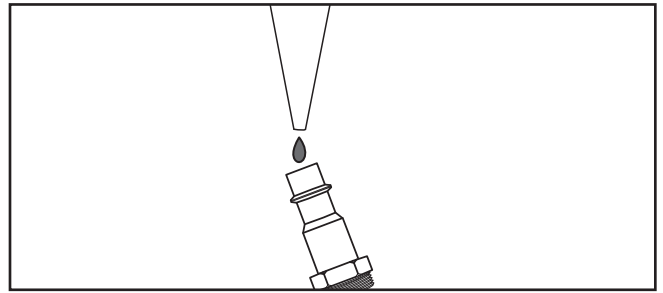


Figure 5. Lubricating directly into air fitting.

A filter/lubricator/regulator set up is not recommended, as excess oil in the tool could spray onto the workpiece.

Before installing the sanding disc, run the sander for a few minutes to eject excess oil, then wipe the tool down with a rag and begin sanding. Oil the tool after use or storage.

Service

To replace the sanding pad:

1. Slide the included wrench between the sander and the sanding pad and insert it onto the spindle as shown in **Figure 6**.

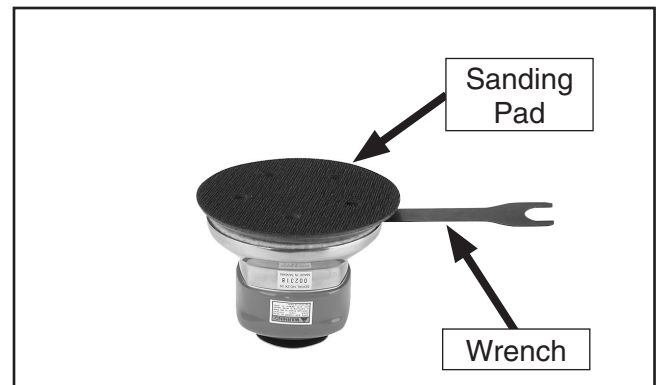
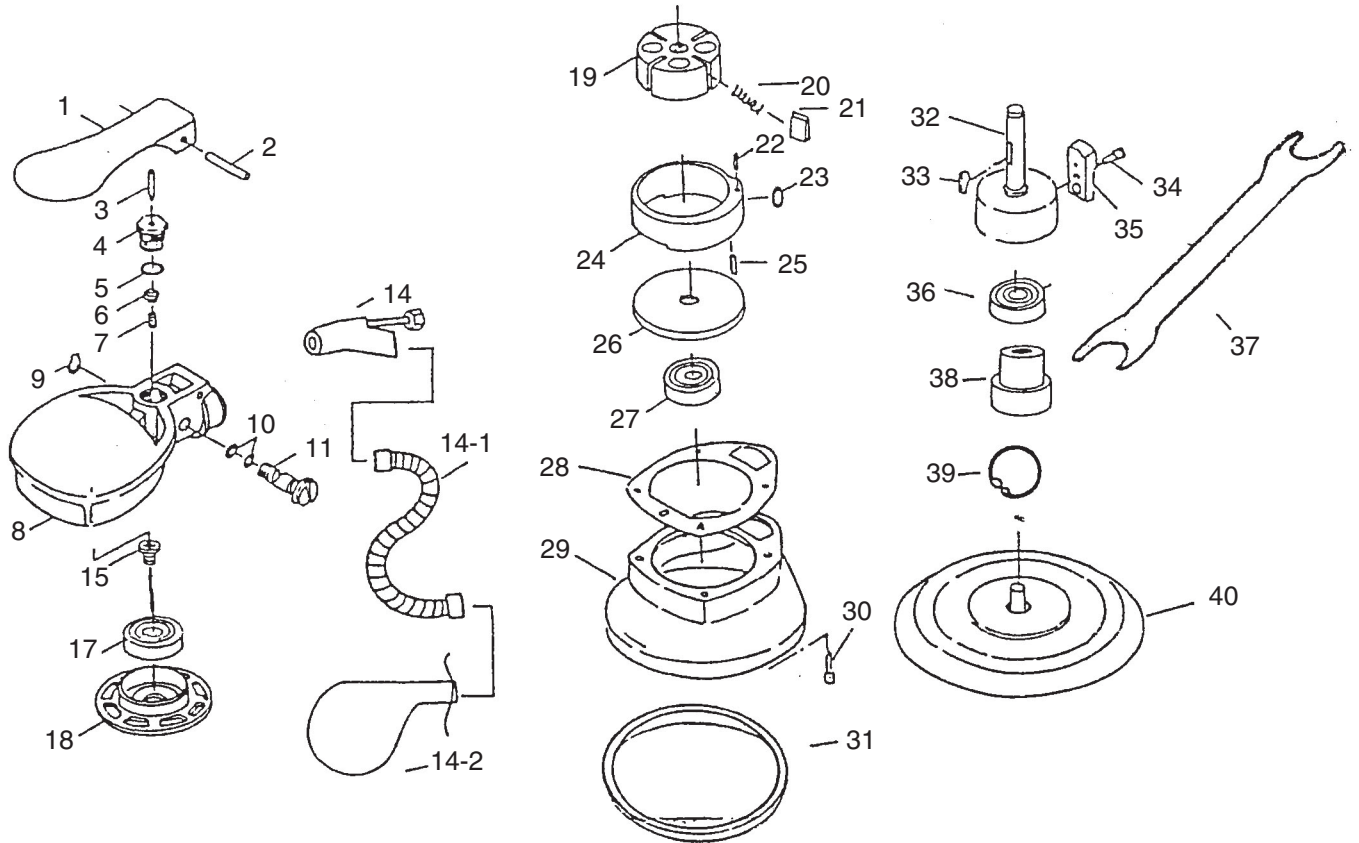


Figure 6. Wrench inserted onto spindle.

2. Hold the wrench and rotate the pad counter-clockwise to remove it.
3. Install a new sanding pad (Part PH0584040) and secure it with the wrench.

If you need help with your new pneumatic tool, call our Tech Support at: (570) 546-9663.

H0584 Parts Breakdown and List



REF	PART #	DESCRIPTION
1	PH0584001	THROTTLE LEVER
2	PRP73M	ROLL PIN 4 X 30
3	PH0584003	VALVE PIN
4	PH0584004	VALVE BODY
5	PH0584005	O-RING
6	PH0584006	THROTTLE VALVE
7	PH0584007	VALVE SPRING
8	PH0584008	MOTOR HOUSING
9	PR36M	EXT RETAINING RING 7MM
10	PH0584010	O-RING
11	PH0584011	REGULATOR
14	PH0584014	AIR ADAPTOR
14-1	PH0584014-1	PLASTIC HOSE
14-2	PH0584014-2	DUST BAG
15	PSB50M	CAP SCREW M5-.8 X 10
17	P6200	BALL BEARING 6200ZZ
18	PH0584018	FRONT PLATE
19	PH0584019	ROTOR
20	PH0584020	VANE SPRING
21	PH0584021	VANE

REF	PART #	DESCRIPTION
22	PH0584022	CYLINDER PIN
23	PH0584023	CYLINDER O-RING
24	PH0584024	CYLINDER
25	PH0584025	CYLINDER PIN
26	PH0584026	REAR PLATE
27	P6200	BALL BEARING 6200ZZ
28	PH0584028	MOTOR GASKET
29	PH0584029	PAD COVER
30	PSB23M	CAP SCREW M4-.7 X 12
31	PH0584031	COTTON RING
32	PH0584032	CRANK SHAFT
33	PH0584033	KEY
34	PH0584034	SCREW
35	PH0584035	LOWER WEIGHT
36	P6202	BALL BEARING 6202ZZ
37	PH0584037	SPECIAL WRENCH
38	PH0584038	RANDOM SHAFT
39	PR29M	INT RETAINING RING 32MM
40	PH0584040	SANDING PAD

