



# MODEL H0760 RED SHELF CART— 3 SHELVES INSTRUCTIONS

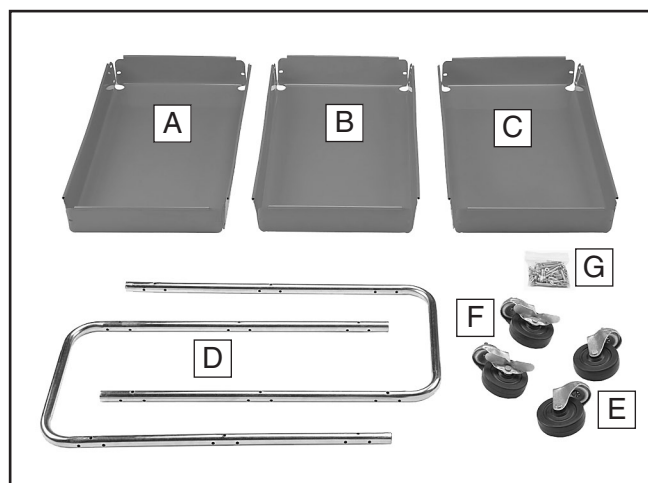
The Model H0760 is convenient for all around shop use. This utility cart can tote around tools, parts or inventory and has a very small foot print.

## Specifications

Weight .....	35 lbs.
Load Capacity .....	220 lbs.
Dimensions.....	16"W x 29½"L x 34"H
Top Shelf Height.....	31¼"
Distance Between Shelves.....	7½"
Shelf Depth.....	3½"

## Inventory (Figure 1)

A.	Top Shelf .....	1
B.	Center Shelf .....	1
C.	Bottom Shelf.....	1
D.	Handles .....	2
E.	Swivel Casters.....	2
F.	Locking Swivel Casters .....	2
G.	Hardware Bag .....	1
	—Slotted Screws M6-1 x 35.....	36
	—Hex Nuts M6-1 .....	36
	—Flat Washers 6mm .....	36
	—Lock Washers 6mm.....	36



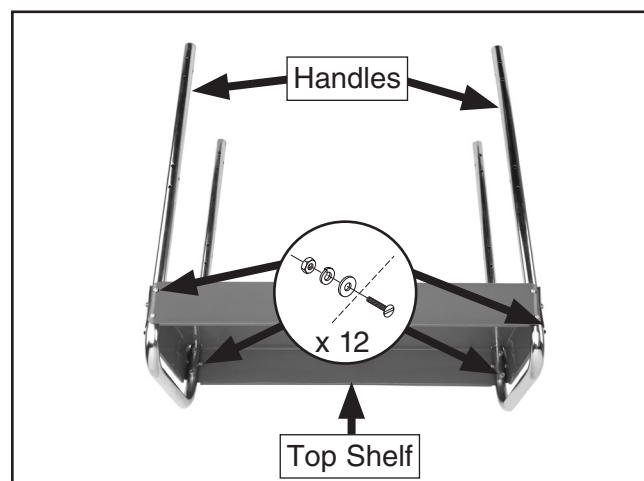
**Figure 1.** H0760 inventory.

## Recommended Tools

Wrench/Socket 10mm .....	1
Wrench/Socket 17mm.....	1
Standard Screwdriver .....	1

## Assembly

1. Insert the two handles through the holes at both ends of the top shelf (see **Figure 2**).



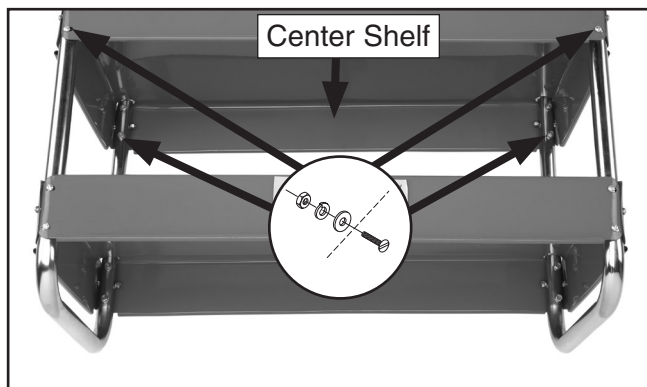
**Figure 2.** Handles secured to top shelf.

2. Align the mounting holes in the top shelf and handles, then fasten with (12) M6-1 x 35 slotted screws, flat washers, lock washers, and hex nuts (see **Figure 2**).

Position the slotted screws on the shelf exterior and the washers and hex nuts on the shelf interior. Finger tighten the fasteners for now.

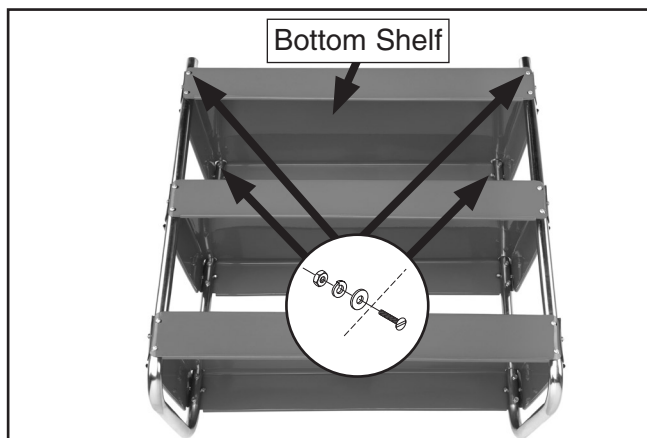
**Note:** If a shelf is slightly bent, use a small screwdriver to align the mounting holes in the shelf and handle.

3. Insert the center shelf (see **Figure 3**) through the handles and fasten in a similar manner to **Step 2**.



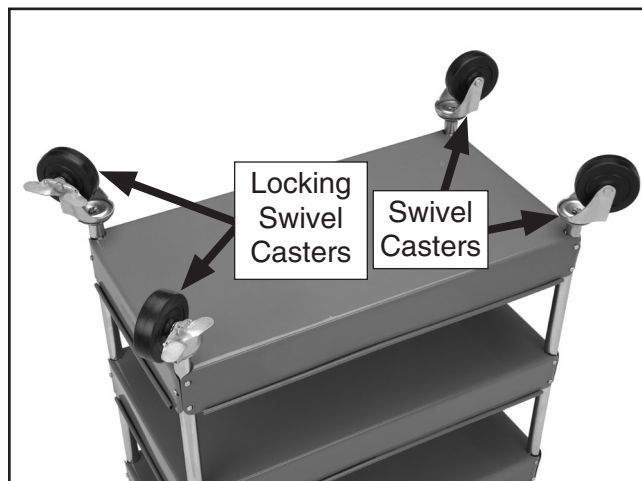
**Figure 3.** Center shelf installed.

4. Repeat **Step 3** to install the bottom shelf (see **Figure 4**).



**Figure 4.** Bottom shelf installed.

5. Thread the swivel casters onto the ends of one handle, then thread the locking swivel casters onto the ends of the other handle (see **Figure 5**).

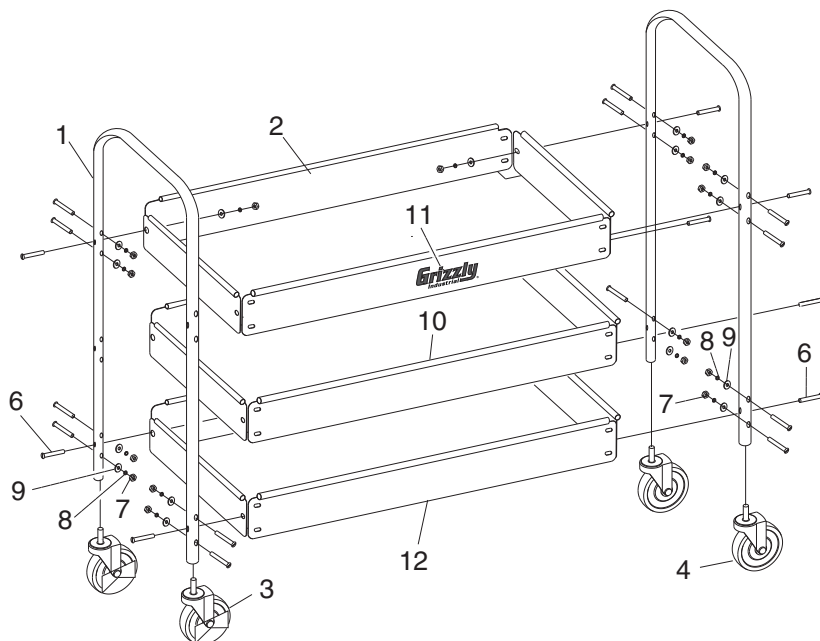


**Figure 5.** Casters installed.

6. Final tighten all of the fasteners.

*If you need help with your cart, call our Tech Support at: (570) 546-9663.*

## H0760 Parts Breakdown and List



REF	PART #	DESCRIPTION
1	PH0760001	HANDLE
2	PH0760002	TOP SHELF
3	PH0760003	LOCKING SWIVEL WHEEL
4	PH0760004	SWIVEL WHEEL
6	PH0760006	SLOTTED SCREW M6-1 X 35
7	PN01M	HEX NUT M6-1
8	PLW03M	LOCK WASHER 6MM
9	PW03M	FLAT WASHER 6MM
10	PH0760010	CENTER SHELF
11	PH0760011	GRIZZLY LOGO
12	PH0760012	BOTTOM SHELF

