



MODEL H7832 ARBOR PRESS STAND INSTRUCTION SHEET

Inventory (Figure 1)

A.	Rear Panel	1
B.	Front Panel.....	1
C.	Cup.....	1
D.	Base	1
E.	Top Panel	1
F.	Tray.....	1

Tools and Hardware:

Cap Screws M12-1.75 x 25	16
Cap Screws M12-1.75 x 35.....	8
Flat Washers 12mm	24
Lock Washers 12mm.....	24
Phillips Head Screws M6-1 x 20	2
Hex Nuts M6-1	2
Hex Nuts M12-1.75	16
Mounting Pins M10-1.5 x 40	2

Assembly (Figure 2)

1. Align the lower holes of the front and rear panels with the holes in the base. Secure with M12-1.75 x 25 cap screws flat washers, and lock washers.
3. Secure the tray to the front and rear panels with M12-1.75 x 25 cap screws, flat washers, lock washers, and hex nuts.
4. Align the large bolt holes in the top panel with the bolt holes in the front and rear panels.
5. Secure the top panel with M12-1.75 x 35 cap screws, flat washers, lock washers, and hex nuts.
6. Attach the cup to the front panel with the Phillips head screws and hex nuts.
7. Secure the stand to the floor with appropriate fasteners for the floor type (not included).
8. Mount the arbor press with hex bolts, flat washers, lock washers and hex nuts, using the mounting pins as a guide, as shown in **Figure 3**. These fastener sizes will vary depending on your arbor press.

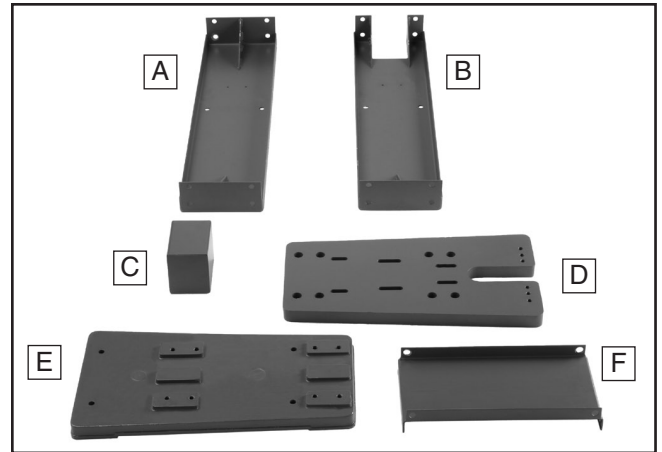


Figure 1. Inventory parts.

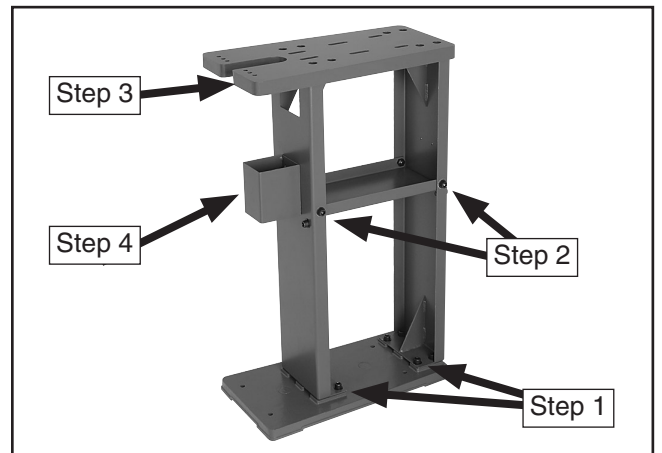


Figure 2. Assembly order.

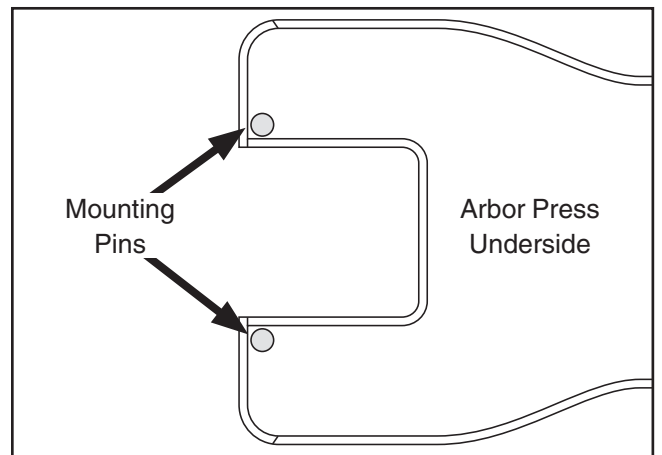
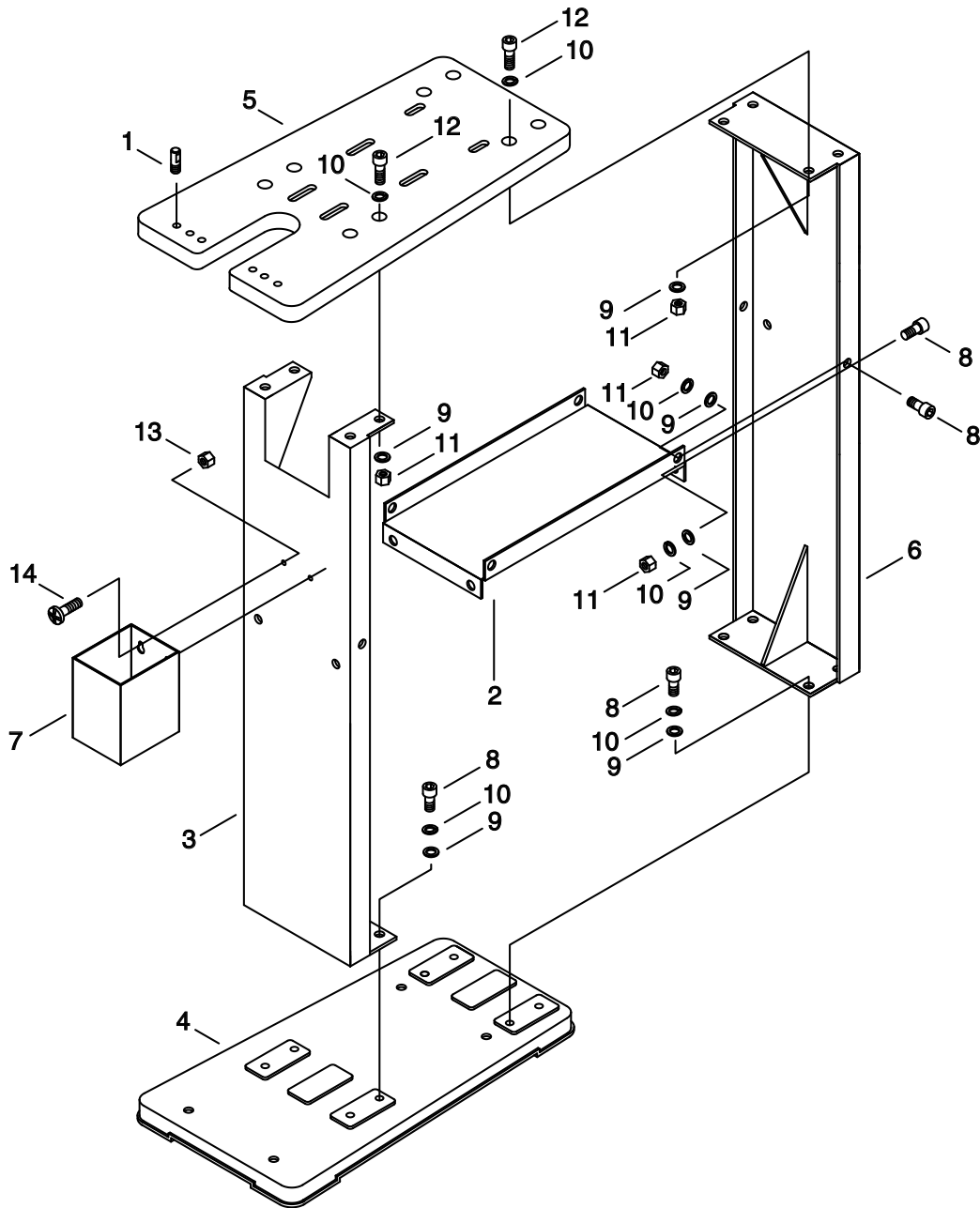


Figure 3. Mounting pin placement.

If you need additional help with this assembly, call our Tech Support at: (570) 546-9663.

H7832 Parts Breakdown and List



REF	PART #	DESCRIPTION
1	PH7832001	MOUNTING PIN M10-1.5 X 40
2	PH7832002	TRAY
3	PH7832003	FRONT PANEL
4	PH7832004	BASE
5	PH7832005	TOP PANEL
6	PH7832006	REAR PANEL
7	PH7832007	CUP

REF	PART #	DESCRIPTION
8	PSB36M	CAP SCREW M12-1.75 X 25
9	PW06M	FLAT WASHER 12MM
10	PLW05M	LOCK WASHER 12MM
11	PN09M	HEX NUT M12-1.75
12	PSB111M	CAP SCREW M12-1.75 x 35
13	PN01M	HEX NUT M6-1
14	PS26M	PHLP HD SCR M6-1 X 20

COPYRIGHT © DECEMBER, 2005 BY GRIZZLY INDUSTRIAL, INC.
**WARNING: NO PORTION OF THIS MANUAL MAY BE REPRODUCED IN ANY SHAPE
OR FORM WITHOUT THE WRITTEN APPROVAL OF GRIZZLY INDUSTRIAL, INC.**
#JK7840 PRINTED IN CHINA