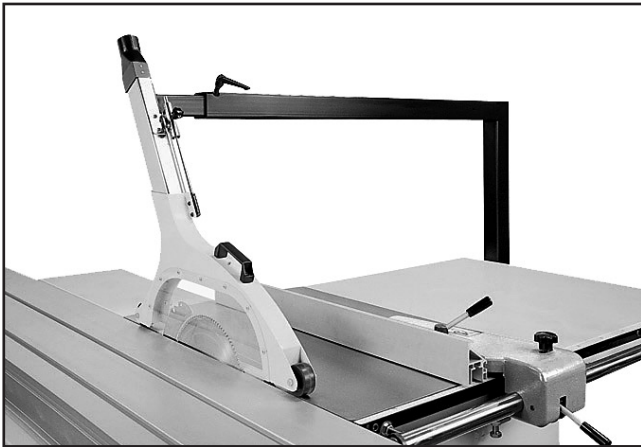




# MODEL H7833 FULLY ENCLOSED BLADE COVER FOR G0493 INSTRUCTIONS

## ⚠️ WARNING

For cutting operations that cut completely through the workpiece, always make sure the blade guard is in good working order and is properly positioned over the blade. Otherwise, unintentional contact with the spinning blade could occur, causing laceration or amputation.



**Figure 6.** Model H7833 Fully Enclosed Blade Cover for the Model G0493 Table Saw.

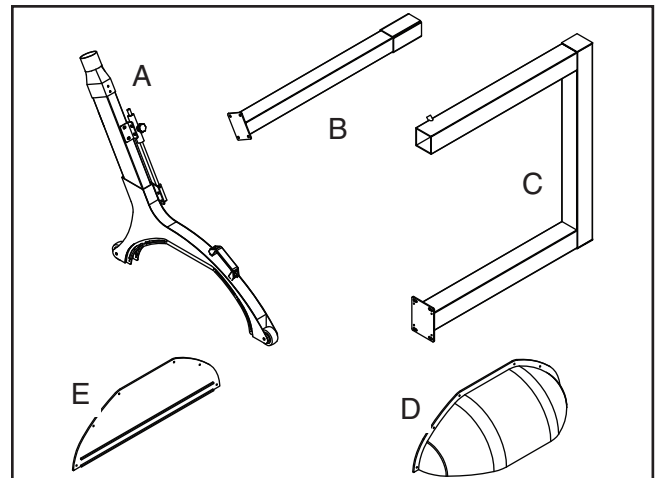
*If you need help with your new fully enclosed blade cover, call our Tech Support at: (570) 546-9663.*

## ⚠️ CAUTION

DO NOT use the Model H7833 without an adequate dust collection system that provides 150 CFM at the connection point of the cover frame. Failure to use a adequate dust collection system can result in short and long-term respiratory illness.

## Inventory

Descriptions (Figure 7)	Qty
A. Blade Cover Frame Assembly.....	1
B. Extension Tube.....	1
C. Support Frame .....	1
D. Right Blade Cover .....	1
E. Left Blade Cover.....	1
F. Hardware (Not Shown):	
— For Frame:	
Lock Lever Assembly.....	1
Cap Screws M8-1.25 x 25.....	4
Lock Washers 8mm .....	4
Flat Washers 8mm.....	4
Set Screws M6-1 x 10.....	4
Knurled Knob Screws M6-1 x 12 .....	4
Lock Washers 6mm .....	4
Flat Washers 6mm.....	4
— For Blade Cover Frame Assembly:	
Knob Screw M6-1 x 16.....	1
Hex Nut M6-1 .....	1
Phillips Head Screws M4-.7 x 8 .....	7
Phillips Head Screws M6-1 x 12 .....	4



**Figure 7.** Model H7833 shipping inventory.

COPYRIGHT © JUNE, 2010 BY GRIZZLY INDUSTRIAL, INC.

**WARNING: NO PORTION OF THIS MANUAL MAY BE REPRODUCED IN ANY SHAPE OR FORM WITHOUT THE WRITTEN APPROVAL OF GRIZZLY INDUSTRIAL, INC.**

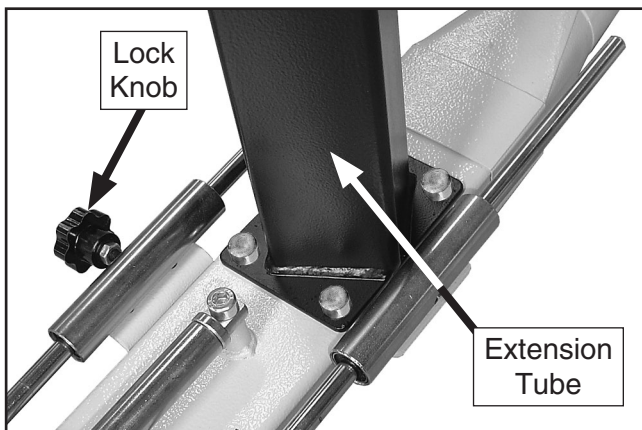
FOR MODELS MANUFACTURED SINCE 3/10 #TS12978 PRINTED IN TAIWAN

## Assembly

Tools Needed	Qty
Additional People .....	At Least 2
Hex Wrench 3mm.....	1
Hex Wrench 6mm.....	1
Wrench 10mm .....	1
Phillips Screwdriver #2 .....	1
Level .....	1

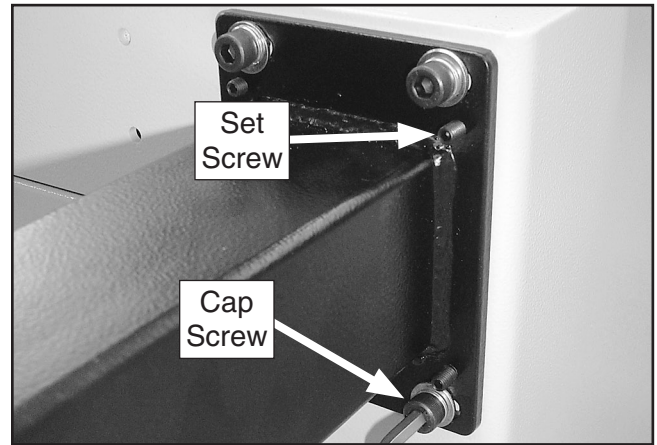
### To assemble and mount the blade cover assembly:

1. DISCONNECT SAW FROM POWER!
2. Connect the extension tube to the blade cover frame assembly with the (4) M6-1 x 22 knurled knob screws, 6mm lock washers, and 6mm flat washers, as shown in **Figure 8**.



**Figure 8.** Installing the extension tube onto the cover frame assembly.

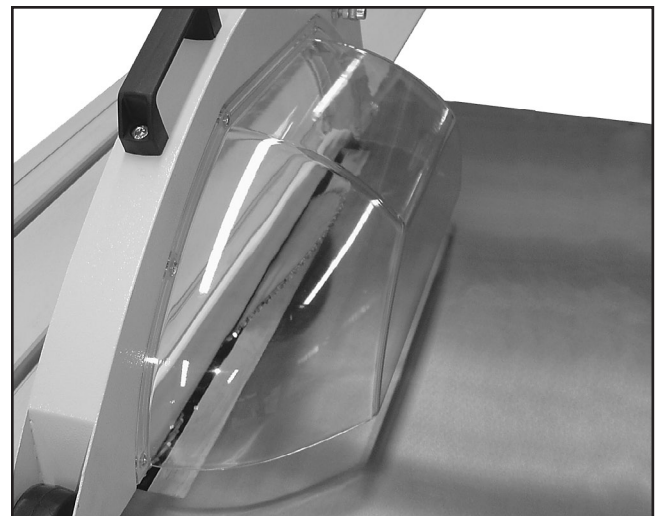
3. Extend the cover frame assembly all the way, then tighten the lock knob shown in **Figure 8** to keep it that way.
4. Remove the extension wing from the table saw, and make sure the saw table is level.
5. Insert the extension tube into the support frame, have two other people help align the mounting holes in the frame mounting plate with the four pre-drilled holes in the table saw cabinet.
6. Install and hand-tighten the (4) M8-1.25 x 25 cap screws, 8mm lock washers, and 8mm flat washers to temporarily hold the assembly in place (see **Figure 9**).



**Figure 9.** Securing the support frame mounting plate to the table saw cabinet.

7. Install the (4) M6-1 x 10 set screws into the support frame mounting plate, then, using the level on top of the frame, thread the set screws in or out to bring the frame level with the table saw. Fully tighten the cap screws to secure the setting.
8. Attach the flat blade cover to the cover frame side that is farthest from the support frame with (7) M4-.7 x 8 Phillips head screws.
9. Secure the bubbled blade cover with (4) M6-1 x 12 Phillips head screws, 6mm lock washers, and 6mm flat washers, as shown in **Figure 10**.
10. Loosen the lock knob you tightened in **Step 3** to allow the blade cover to float freely over the blade.

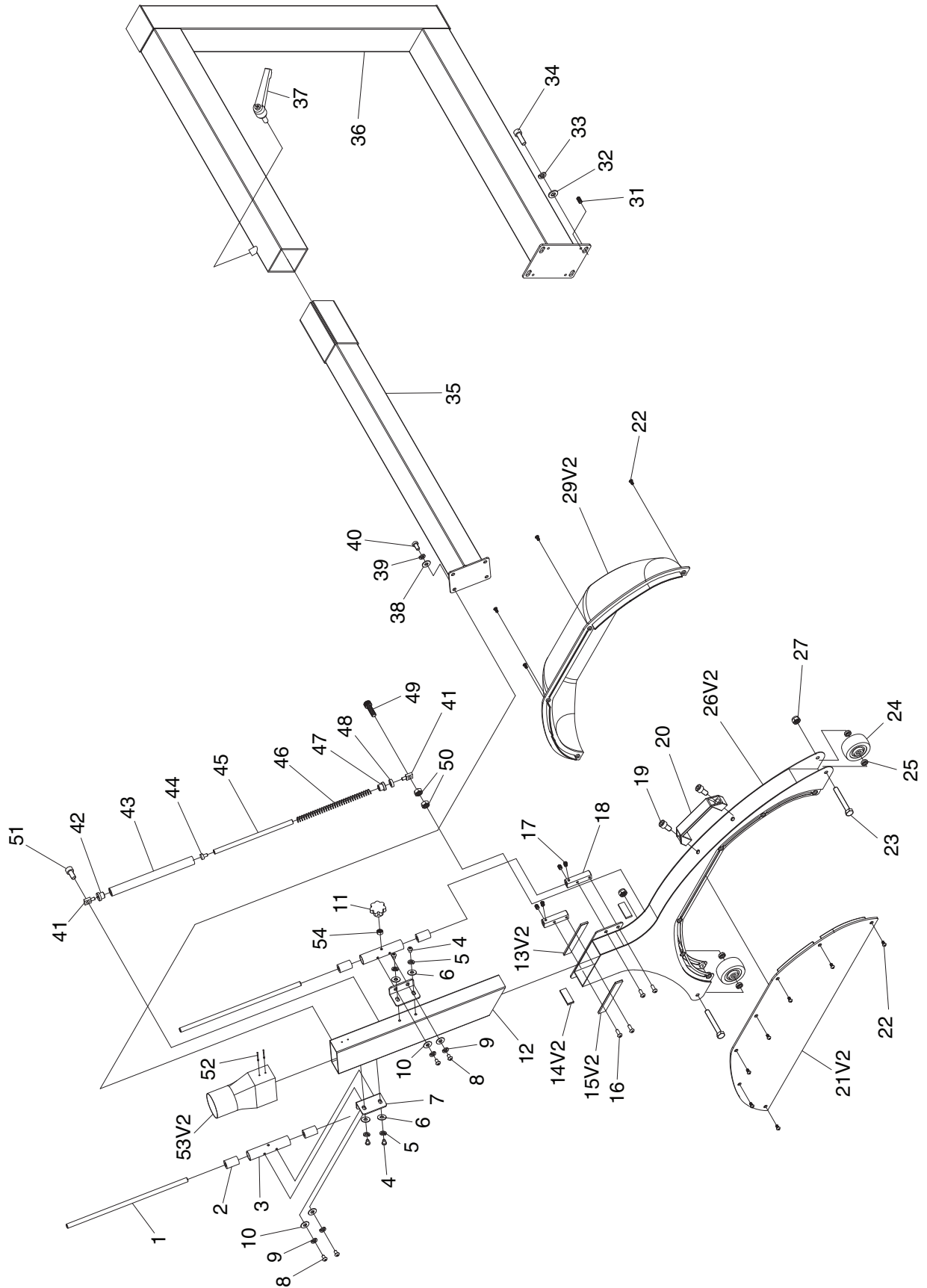
Your Model H7833 Fully Enclosed Blade cover is now ready for use!



**Figure 10.** Blade covers installed.



# Parts Diagram



# Parts List

REF	PART #	DESCRIPTION
1	PH7833001	GUIDE ROD
2	PH7833002	GUIDE ROD BUSHING
3	PH7833003	GUIDE ROD SLEEVE
4	PBHS09M	BUTTON HD CAP SCR M6-1 X 12
5	PLW03M	LOCK WASHER 6MM
6	PW03M	FLAT WASHER 6MM
7	PH7833007	GUIDE ROD MOUNTING BRACKET
8	PBHS11M	BUTTON HD CAP SCR M6-1 X 10
9	PLW03M	LOCK WASHER 6MM
10	PW03M	FLAT WASHER 6MM
11	PH7833011	KNOB SCREW M6-1 X 15
12	PH7833012	DUST CHUTE
13V2	PH7833013V2	DUST SEAL 90MM THIN V2.03.10
14V2	PH7833014V2	DUST SEAL 40MM V2.03.10
15V2	PH7833015V2	DUST SEAL 90MM THICK V2.03.10
16	PBHS05M	BUTTON HD CAP SCR M6-1 X 20
17	PSS02M	SET SCREW M6-1 X 6
18	PH7833018	GUIDE ROD SLEEVE BRACKET
19	PCAP11M	CAP SCREW M8-1.25 X 16
20	PH7833020	COVER HANDLE
21V2	PH7833021V2	LEFT BLADE COVER V2.03.10
22	PS07M	PHLP HD SCR M4-.7 X 8
23	PB28M	HEX BOLT M8-1.25 X 60
24	PH7833024	CASTER
25	PH7833025	CASTER BUSHING
26V2	PH7833026V2	BLADE COVER FRAME V2.03.10

REF	PART #	DESCRIPTION
27	PLN04M	LOCK NUT M8-1.25
29V2	PH7833029V2	RIGHT BLADE COVER V2.03.10
31	PSS01M	SET SCREW M6-1 X 10
32	PW01M	FLAT WASHER 8MM
33	PLW04M	LOCK WASHER 8MM
34	PCAP31M	CAP SCREW M8-1.25 X 25
35	PH7833035	EXTENSION TUBE
36	PH7833036	SUPPORT FRAME
37	PH7833037	LOCK LEVER ASSEMBLY
38	PW03M	FLAT WASHER 6MM
39	PLW03M	LOCK WASHER 6MM
40	PH7833040	KNURLED KNOB SCREW M6-1 X 12
41	PH7833041	PIVOT BOLT
42	PH7833042	TOP SLEEVE COVER
43	PH7833043	SPRING SLEEVE
44	PH7833044	SPRING ROD SCREW
45	PH7833045	SPRING ROD
46	PH7833046	COMPRESSION SPRING
47	PH7833047	BOTTOM SLEEVE COVER
48	PH7833048	CUSHION
49	PCAP13M	CAP SCREW M8-1.25 X 30
50	PN03M	HEX NUT M8-1.25
51	PCAP11M	CAP SCREW M8-1.25 X 16
52	PRIV004M	STEEL BLIND RIVET 4 X 10MM
53V2	PH7833053V2	DUST PORT 2-1/2" V2.03.10
54	PN01M	HEX NUT M6-1

