



MODEL H8003 HYDRAULIC LIFTING TABLE—450 LBS INSTRUCTIONS

Introduction

This 450 lb. capacity hydraulic lifting table features 8" fixed and swivel casters with brakes, a foot control for lifting, and a cable release for lowering.

Specifications

Table Surface 39³/₈"L x 19³/₄"W
 Minimum Table Height 13¹/₂"
 Maximum Table Height 39¹/₂"
 Capacity.....450 lbs.
 Shipping Weight 163 lbs.

Inventory (Figure 1)

Qty

- A. Hydraulic Lifting Table..... 1
- B. Foot Control Lever with Fasteners..... 1

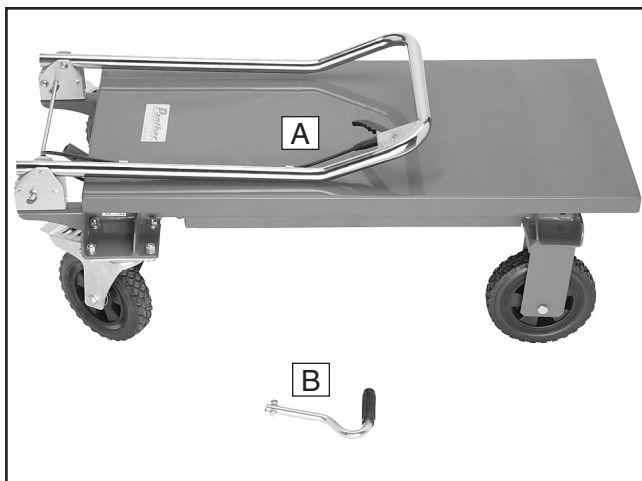


Figure 1. Model H8003 inventory.

Assembly

1. Insert the foot control lever into the square receiver and secure with the included fasteners, as shown in **Figure 2**.

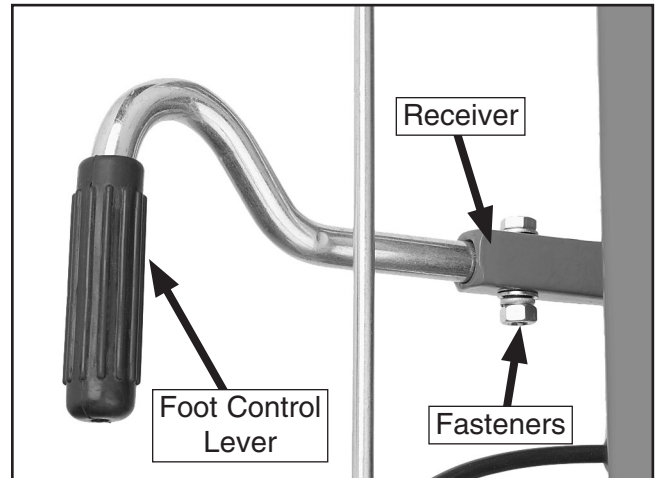


Figure 2. Foot control installed.

2. Raise the handle to the operating position (**Figure 3**).

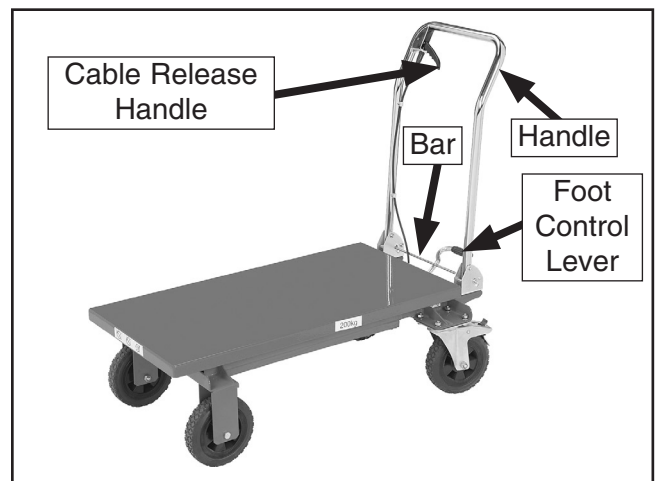


Figure 3. Handle raised.

Operation

1. To raise the table, pump the foot control lever; to lower the table, squeeze the cable release handle (**Figure 3**).

COPYRIGHT © MAY, 2007 BY GRIZZLY INDUSTRIAL, INC.

WARNING: NO PORTION OF THIS MANUAL MAY BE REPRODUCED IN ANY SHAPE OR FORM WITHOUT THE WRITTEN APPROVAL OF GRIZZLY INDUSTRIAL, INC.

#BL8951 PRINTED IN CHINA

Note: When the table is fully raised, gently squeeze the cable release handle to slowly lower the table. Pulling the handle quickly will cause the table to crash against the hydraulic assembly.

2. Push the brake lever (**Figure 4**) down to lock or forward to unlock the swivel casters.

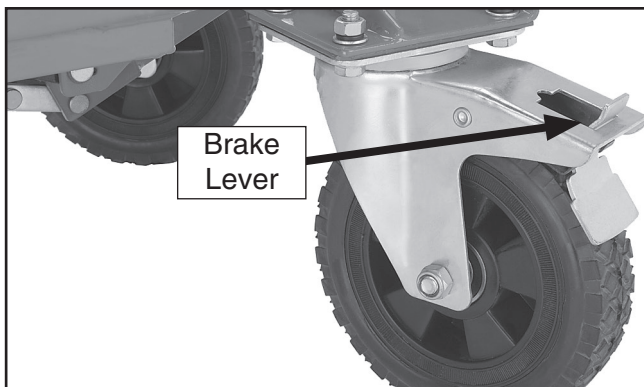


Figure 4. Swivel caster lock lever.

!WARNING

Do not overload the cart! Placing loads in excess of 450 lbs. on this cart could result in death or serious personal injury.

3. To lower the handle for storage, remove the foot control lever, press the bar down (**Figure 3**), and push the handle down.

!CAUTION

Pinch Hazard! Do not place fingers or body parts between the scissor assembly. Failure to follow this warning could result in serious personal injury.

Maintenance/Service

The cable release tension may need to be adjusted if the handle tension is slack, or if the foot control lever is difficult to operate.

To adjust the cable release tension:

1. Loosen the fasteners (**Figure 5**) securing the cable when the table is lowered completely.
2. Adjust cable tension, then secure the fasteners.

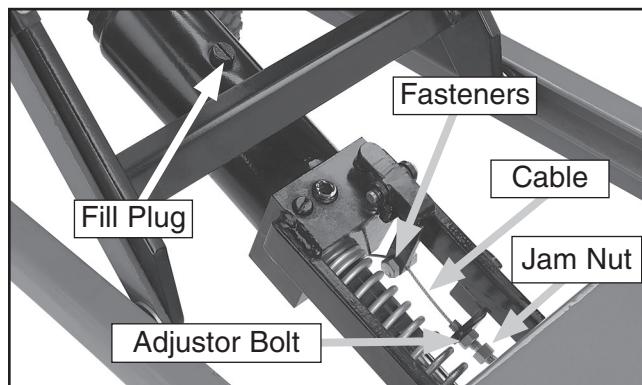


Figure 5. Fill plug location.

3. Loosen the jam nut and turn the adjustor bolt clockwise to reduce tension on the cable release handle and foot control lever; turn it clockwise to increase tension on both components.
4. Tighten the jam nut against the adjustor bolt when you are satisfied with the cable release tension.

To add oil:

1. Lock the swivel casters, then raise the table at least 4".
2. Remove the two 12mm external retaining rings and alignment pins securing the front of the table (**Figure 6**).

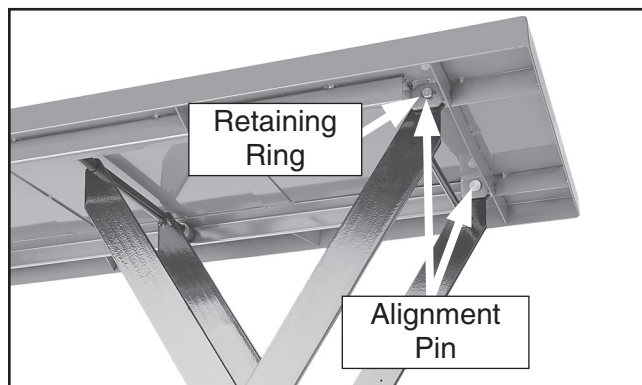


Figure 6. Interior retaining ring and pin (one side shown).

3. Lower the table completely.



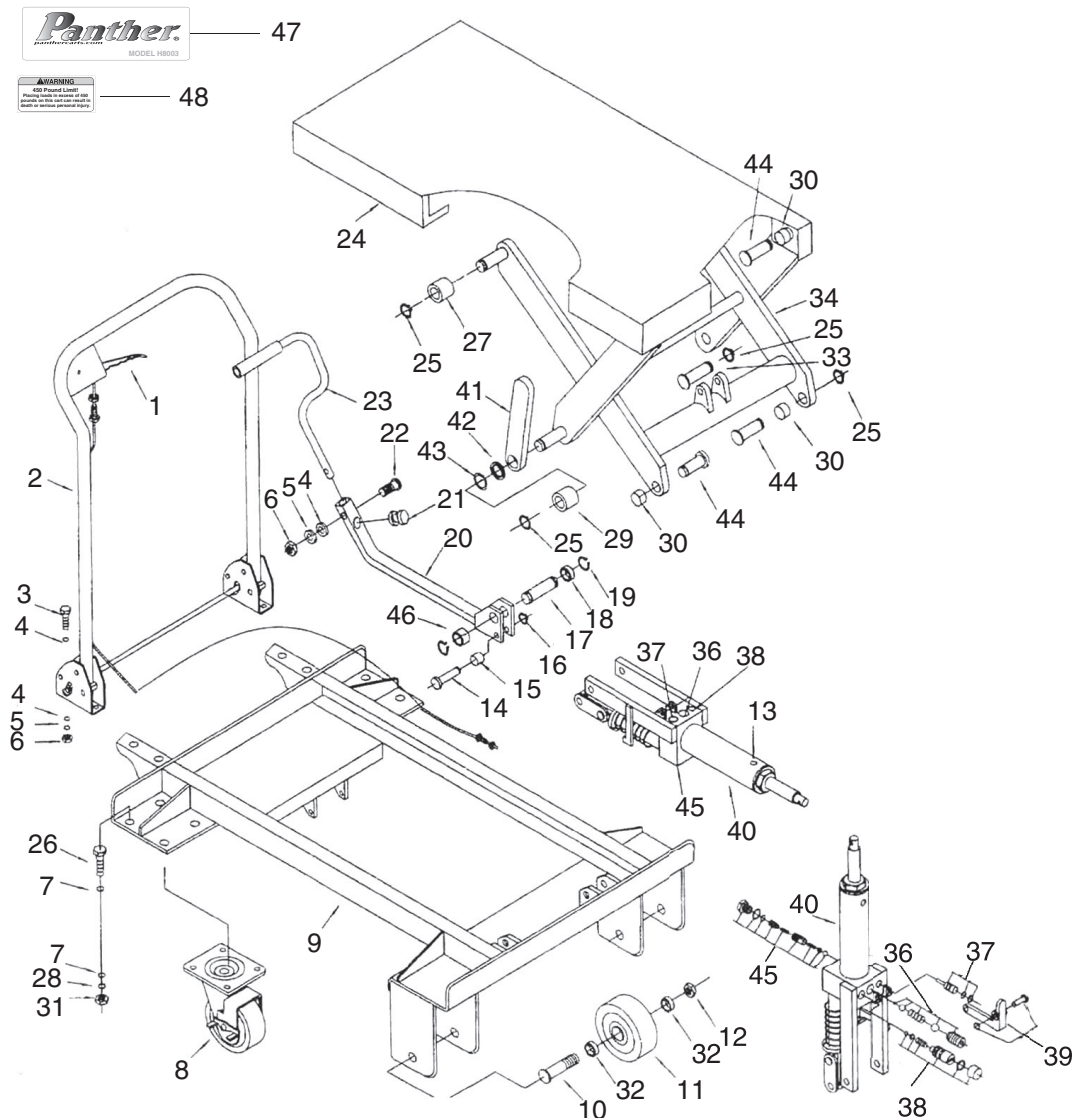
4. Raise the front end of the table and place a wood 2x4 (**Figure 7**) between the table and front wheel to access the hydraulic assembly.
5. Unscrew the fill plug, fill the cylinder with clean hydraulic jack oil to the level of the fill plug hole, and replace the fill plug.
6. Reinstall the table with the hardware removed in **Step 2**.



Figure 7. Supporting table with a 2x4.

If you need help with your new hydraulic lift table, call our Tech Support at: (570) 546-9663.

Parts Breakdown



Parts List

REF	PART #	DESCRIPTION
1	PH8003001	CABLE RELEASE HANDLE
2	PH8003002	HANDLE ASSEMBLY
3	PB07M	HEX BOLT M8-1.25 X 25
4	PW01M	FLAT WASHER 8MM
5	PLW04M	LOCK WASHER 8MM
6	PN03M	HEX NUT M8-1.25
7	PW04M	FLAT WASHER 10MM
8	PH8003008	CASTER WHEEL
9	PH8003009	FRAME
10	PB167M	HEX BOLT M12-1.75 X 85
11	PH8003011	WHEEL
12	PLN09M	LOCK NUT M12-1.75
13	PH8003013	FILL PLUG
14	PH8003014	SHAFT
15	PH8003015	ROLLER
16	PR01M	EXT RETAINING RING 10MM
17	PH8003017	ALIGNMENT PIN
18	PH8003018	BUSHING
19	PR06M	EXT RETAINING RING 16MM
20	PH8003020	PUMP ARM
21	PH8003021	BUMPER
22	PB26M	HEX BOLT M8-1.25 X 30
23	PH8003023	FOOT CONTROL LEVER
24	PH8003024	TABLE

REF	PART #	DESCRIPTION
25	PR03M	EXT RETAINING RING 12MM
26	PB01M	HEX BOLT M10-1.5 X 30
27	PH8003027	ROLLER
28	PLW06M	LOCK WASHER 10MM
29	PH8003029	ROLLER
30	PH8003030	BUSHING
31	PN02M	HEX NUT M10-1.5
32	PH8003032	BUSHING
33	PH8003033	ALIGNMENT PIN
34	PH8003034	SCISSOR ARM ASSEMBLY
36	PH8003036	FLOW VALVE KIT
37	PH8003037	RELEASE VALVE KIT
38	PH8003038	PRESSURE RELIEF VALVE KIT
39	PH8003039	RELEASE LEVER KIT
40	PH8003040	PUMP/CYLINDER UNIT
41	PH8003041	ARM SUPPORT
42	PW14M	FLAT WASHER 15MM
43	PR05M	EXT RETAINING RING 15MM
44	PH8003044	ALIGNMENT PIN
45	PH8003045	SPEED CONTROL VALVE KIT
46	PH8003046	BUSHING
47	PH8003047	MODEL NUMBER LABEL
48	PH8003048	CAPACITY WARNING LABEL