



MODEL H8364 DELUXE SHOP STOOL WITH BACKREST INSTRUCTION SHEET

⚠️ WARNING

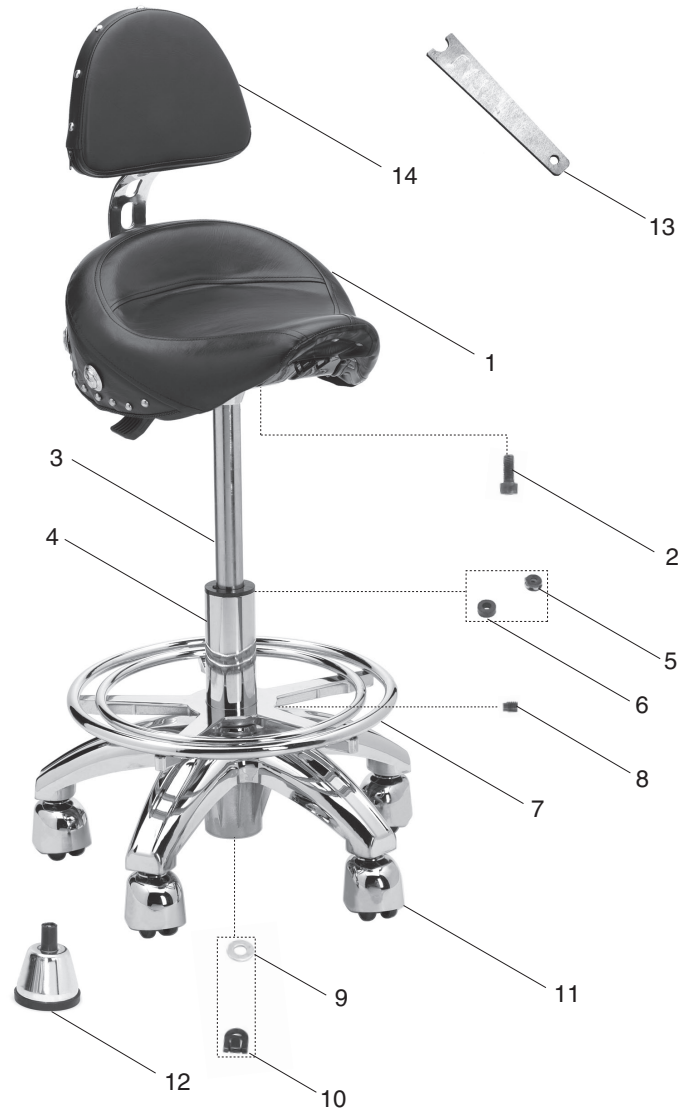
This stool is for sitting only. Due to the swiveling seat and wheels, standing on or using this stool as a step stool can result in serious personal injury from accidental falling. Do not exceed the maximum weight limit of 250 lbs.

Assembly

Install either the foot or the caster assembly to the bottom of the base assembly. Slide the backrest into the bracket located in the back of the seat assembly. *If you need help with the Model H8364, call our Technical Support line at: (570) 546-9663.*

Maintenance

Use a damp cloth or vinyl treatment to clean the seat. Do not use abrasive materials or harsh cleaning products.



REF PART #	DESCRIPTION
1	PH8364001 SEAT ASSEMBLY
2	PSB14M CAP SCREW M8-1.25 X 20
3	PH8363003 UPPER SHAFT ASSEMBLY
4	PH8363004 LOWER SHAFT AND BASE ASSEMBLY
5	PH8363005 THRUST BEARING
6	PH8363006 SPACER
7	PH8363007 FOOT REST ASSEMBLY

REF PART #	DESCRIPTION
8	PH8363008 PILOT SET SCREW M8-1.25 X 10
9	PW01M FLAT WASHER 8MM
10	PH8363010 CLIP
11	PH8363011 CASTER ASSEMBLY
12	PH8363012 FOOT ASSEMBLY
13	PH8363013 SPECIAL WRENCH
14	PH8364014 BACKREST

COPYRIGHT © DECEMBER, 2007 BY GRIZZLY INDUSTRIAL, INC.
WARNING: NO PORTION OF THIS MANUAL MAY BE REPRODUCED IN ANY SHAPE OR FORM WITHOUT THE WRITTEN APPROVAL OF GRIZZLY INDUSTRIAL, INC.

#JM10232 PRINTED IN CHINA