



MODEL T21521 BIG-MOUTH DUST HOOD w/STAND INSTRUCTIONS

Introduction

The Model T21521 Big-Mouth Dust Hood provides a method of effective dust collection for machines that do not come equipped with dust ports, or for additional dust collection when needed. The dust hood adjusts vertically from 29" to 49".

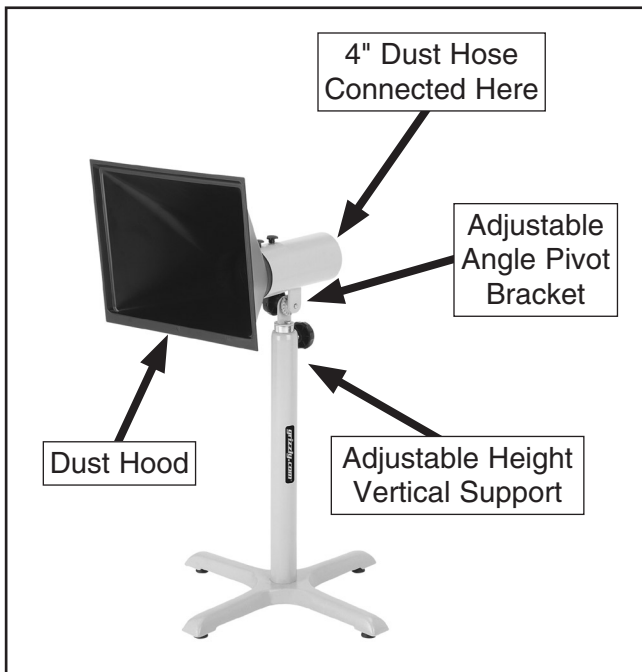


Figure 1. Model T21521 identification.

Inventory

After removing the contents of the shipping package, lay them out and refer to the **Parts Breakdown** on the last page to inventory the components.

If you need help with your new dust hood, call our Tech Support at: (570) 546-9663.

Assembly

Refer to **Figure 1** and the **Parts Breakdown** illustration on the last page to help you with the following assembly procedure.

Tools Needed	Qty
Wrench or Socket 10, 14mm	1 Each

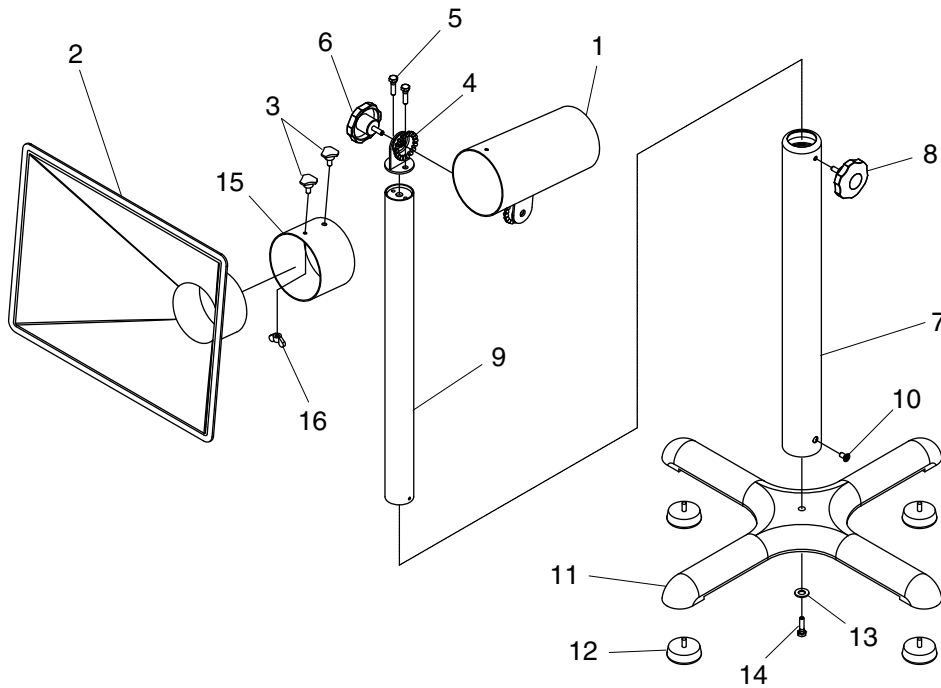
To assemble your dust hood:

1. Thread the four foot pads into the base.
2. Secure the vertical support onto the base by threading the $\frac{3}{8}$ "-16 x 1" hex bolt and flat washer through the bottom of the base and into the support assembly.
3. Install the angle pivot bracket onto the top of the vertical support assembly with the two $\frac{1}{4}$ "-20 x $\frac{1}{2}$ " hex bolts.
4. Use the $\frac{3}{8}$ "-16 x $\frac{1}{4}$ " knob to install the dust tube onto the angle pivot bracket.
5. Slide the hood mounting tube onto the dust tube and secure it in place with one of the $\frac{1}{4}$ "-20 x $\frac{3}{8}$ " knobs.
6. Insert the dust hood into the mounting tube, then secure it in place with the remaining $\frac{1}{4}$ "-20 x $\frac{3}{8}$ " knob and wing nut.

Operation

Adjust the angle pivot and vertical support assembly so that the hood is positioned close enough to the operation to be effective without interfering with it. Then, securely clamp a 4" dust hose between the hood assembly and your dust collection system.

T21521 Parts Breakdown



REF	PART #	DESCRIPTION	QTY
1	PT21521001	DUST TUBE	1
2	PT21521002	DUST HOOD	1
3	PT21521003	KNOB 1/4-20 X 3/8	2
4	PT21521004	ANGLE PIVOT BRACKET	1
5	PB19	HEX BOLT 1/4-20 X 1/2	2
6	PT21521006	KNOB 3/8-16 X 1-1/4	1
7	PT21521007	BOTTOM VERTICAL SUPPORT	1
8	PT21521008	KNOB 5/16-18 X 3/4	1

REF	PART #	DESCRIPTION	QTY
9	PT21521009	TOP VERTICAL SUPPORT	1
10	PHTEK33M	TAP SCREW M5 X 10	1
11	PT21521011	BASE	1
12	PT21521012	FOOT PAD 1/4-20 X 3/4	4
13	PW02	FLAT WASHER 3/8	1
14	PCAP14	CAP SCREW 3/8-16 X 1	1
15	PT21521015	HOOD MOUNTING TUBE	1
16	PWN02	WING NUT 1/4-20	1

COPYRIGHT © SEPTEMBER, 2009 BY GRIZZLY INDUSTRIAL, INC.

WARNING: NO PORTION OF THIS MANUAL MAY BE REPRODUCED IN ANY SHAPE OR FORM WITHOUT THE WRITTEN APPROVAL OF GRIZZLY INDUSTRIAL, INC.

#TS12190 PRINTED IN TAIWAN