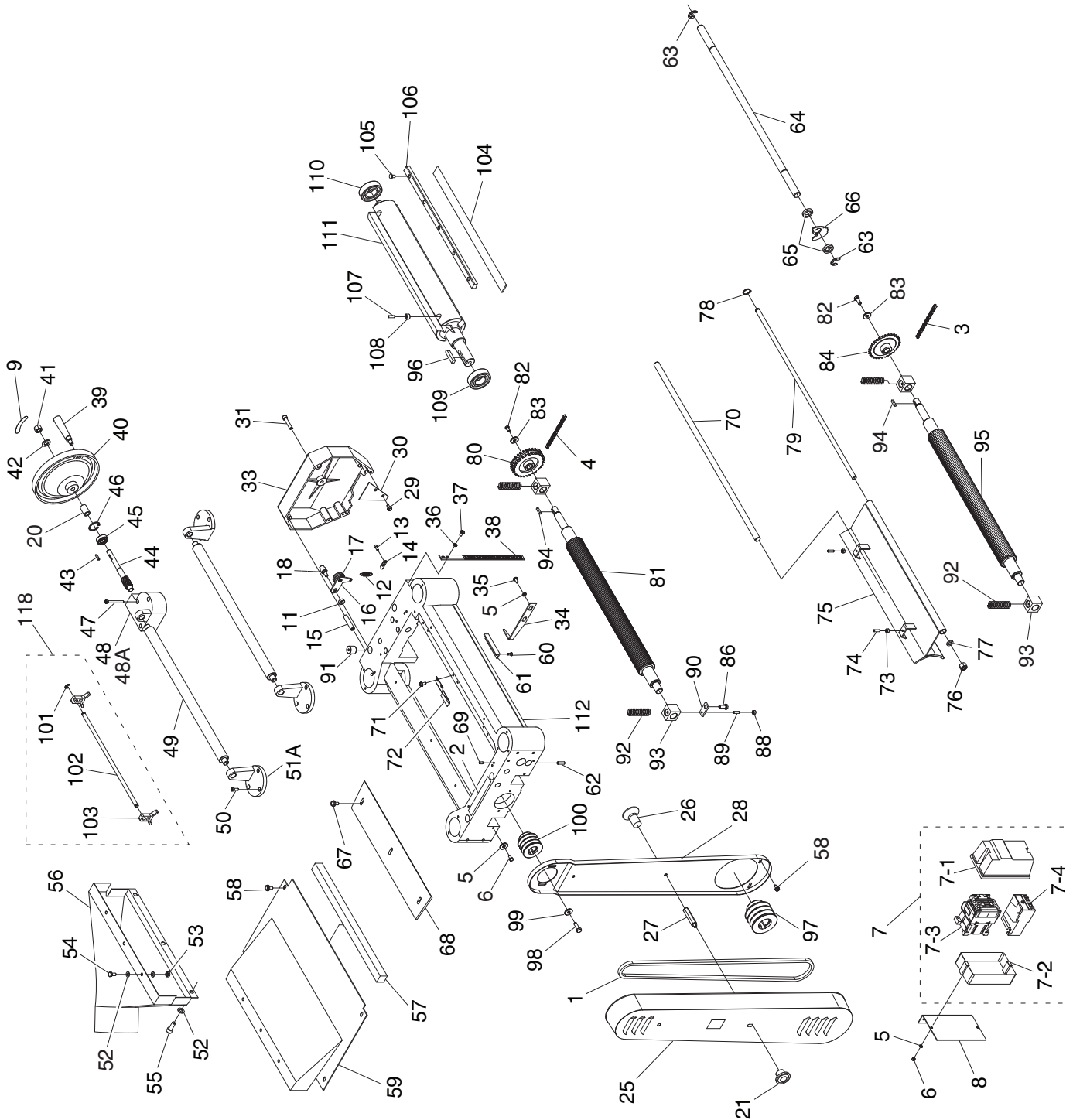


SECTION 9: PARTS

G0453 Headstock Breakdown



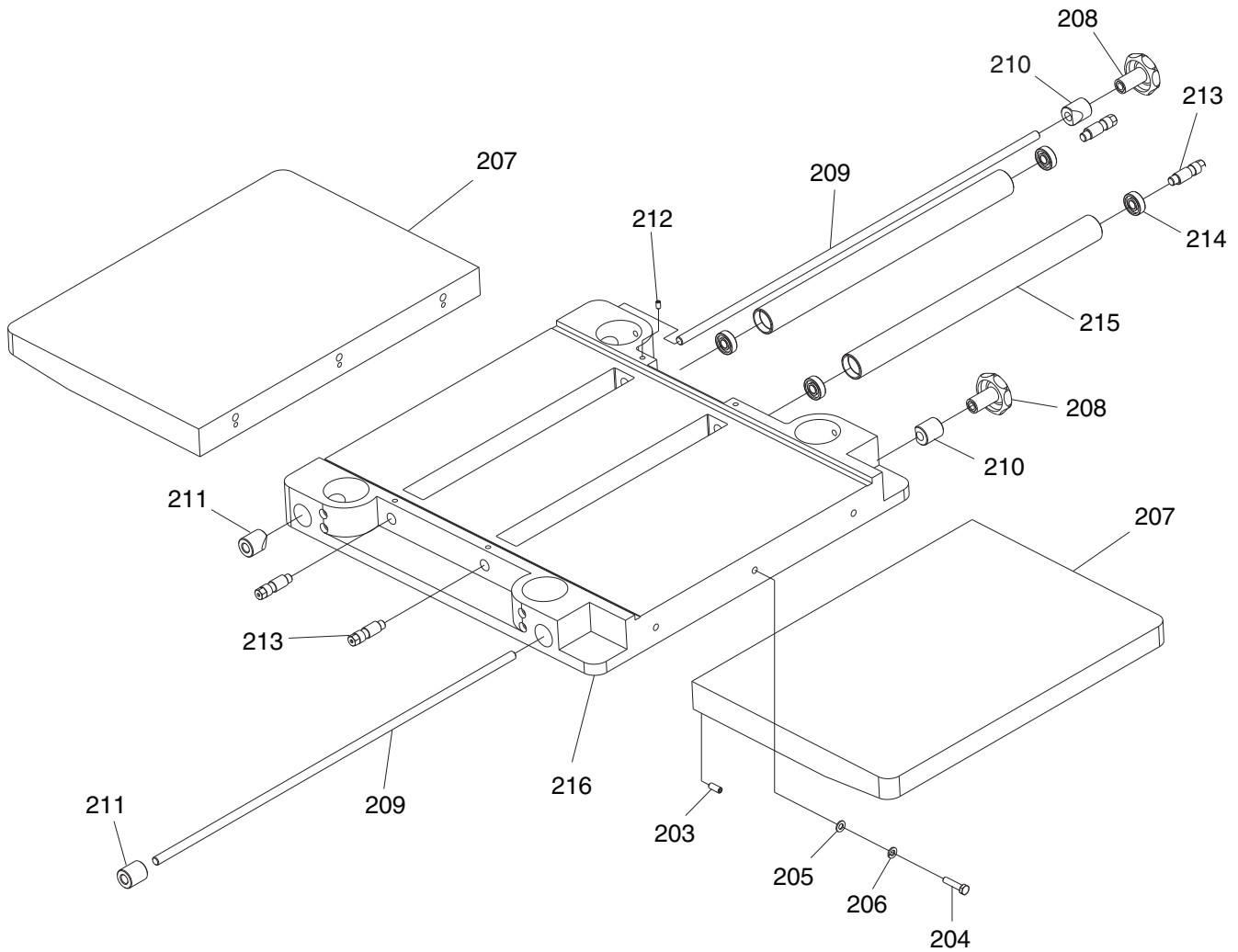
G0453 Headstock Parts List

REF	PART #	DESCRIPTION
1	PVMX60	COGGED V-BELT MX-60
2	P0453002	OIL FILL LABEL
3	P0453003	CHAIN 06B-1 X 49 31LINKS
4	P0453004	CHAIN 06B-1 X 63 24LINKS
5	PW03M	FLAT WASHER 6MM
6	PSB26M	CAP SCREW M6-1 X 12
7	P0453007	MAGNETIC SWITCH ASSEMBLY
7-1	P0453007-1	MAGNETIC SWITCH COVER
7-2	P0453007-2	MAGNETIC SWITCH BACK
7-3	P0453007-3	CONTACTOR NHD 09D 220V
7-4	P0453007-4	OL RELAY NHD BTH-21 17-21A
8	P0453008	MAGNETIC SWITCH PLATE
9	P0453009	HANDWHEEL LABEL
11	P0453011	COLLAR
12	P0453012	EXTENSION SPRING
13	PSS13M	SET SCREW M10-1.5 X 12
14	P0453014	HANGER
15	P0453015	SHAFT
16	P0453016	BRACKET
17	P0453017	IDLER PULLEY
18	P0453018	IDLER SHAFT
20	P0453020	COLLAR
21	P0453021	STAR KNOB M8-1.25
25	P0453025	BELT COVER
26	PFH02M	FLAT HD SCR M6-1 X 12
27	P0453027	SPECIAL BOLT
28	P0453028	BELT GUARD
29	PFB09M	FLANGE BOLT M6-1 X 10
30	P0453030	SAFETY HATCH
31	PSB45M	CAP SCREW M8-1.25 X 45
33	P0453033	CHAIN DRIVE COVER
34	P0453034	POINTER
35	PS68M	PHLP HD SCR M6-1 X 10
36	PW03M	FLAT WASHER 6MM
37	PS14M	PHLP HD SCR M6-1 X 12
38	P0453038	SCALE
39	P0453039	HANDLE
40	P0453040	HANDWHEEL
41	PN09M	HEX NUT M12-1.75
42	PW06M	FLAT WASHER 12MM
43	PK48M	KEY 4 X 4 X 20
44	P0453044	WORM GEAR
45	P6201	BALL BEARING 6201ZZ
46	PR29M	INT RETAINING RING 32MM
47	PSB137M	CAP SCREW M5-.8 X 55
48	P0453048	WORM HOUSING
48A	P0453048A	WORM HOUSING ASSEMBLY
49	P0453049	RETURN ROLLER
50	PSB20M	CAP SCREW M5-.8 X 14
51A	P0453051A	ROLLER STAND 3.505" V2.01.08
52	PW03M	FLAT WASHER 6MM
53	PN01M	HEX NUT M6-1
54	PB04M	HEX BOLT M6-1 X 10
55	PB09M	HEX BOLT M8-1.25 X 20
56	P0453056	DUST HOOD

REF	PART #	DESCRIPTION
57	P0453057	FOAM PIECE
58	PFB09M	FLANGE BOLT M6-1 X 10
59	P0453059	TOP COVER
60	PFH04M	FLAT HD SCR M6-1 X 8
61	P0453061	CUT LIMIT PLATE
62	PSS06M	SET SCREW M8-1.25 X 16
63	PEC05M	E-CLIP 15MM
64	P0453064	ANTI-KICKBACK ROD
65	P0453065	COLLAR
66	P0453066	ANTI-KICKBACK FINGER
67	PFB10M	FLANGE BOLT M6-1 X 15
68	P0453068	CHIP DEFLECTOR
69	PSS25M	SET SCREW M6-1 X 20
70	P0453070	SHAFT
71	PFB01M	FLANGE BOLT M6-1 X 12
72	P0453072	HOLDDOWN PLATE
73	PN01M	HEX NUT M6-1
74	PSS58M	SET SCREW M6-1 X 18
75	P0453075	CHIP BREAKER
76	PN09M	HEX NUT M12-1.75
77	PLW05M	LOCK WASHER 12MM
78	PR03M	EXT RETAINING RING 12MM
79	P0453079	LOCKING ROD
80	P0453080	OUTFEED ROLLER SPROCKET
81	P0453081	OUTFEED ROLLER
82	PB83M	HEX BOLT M6-1 X 16
83	PW03M	FLAT WASHER 6MM
84	P0453084	INFEED ROLLER SPROCKET
86	PB03M	HEX BOLT M8-1.25 X 16
88	PN06M	HEX NUT M5-.8
89	PSS53M	SET SCREW M5-.8 X 12
90	P0453090	PLATE
91	P0453091	SPECIAL OILER SET SCREW
92	P0453092	COMPRESSION SPRING
93	P0453093	ROLLER BUSHING BLOCK
94	PK08M	KEY 5 X 5 X 16
95	P0453095	INFEED ROLLER
96	PK09M	KEY 8 X 8 X 35
97	P0453097	MOTOR PULLEY 60HZ
98	PB09M	HEX BOLT M8-1.25 X 20
99	P0453099	COLLAR
100	P0453100	CUTTERHEAD PULLEY 60HZ
101	PEC015M	E-CLIP 8MM
102	P0453102	KNIFE GAUGE SHAFT
103	P0453103	KNIFE GAUGE FOOT
104	P0453104	KNIFE (SET OF 3)
105	P0453105	GIB SCREW
106	P0453106	GIB
107	PSB24M	CAP SCREW M5-.8 X 16
108	P0453108	ADJUSTING NUT
109	P6205	BALL BEARING 6205ZZ
110	P6204	BALL BEARING 6204ZZ
111	P0453111	CUTTERHEAD
112	P0453112	HEAD CASTING
118	P0453118	KNIFE GAUGE ASSEMBLY



G0453 Table Breakdown

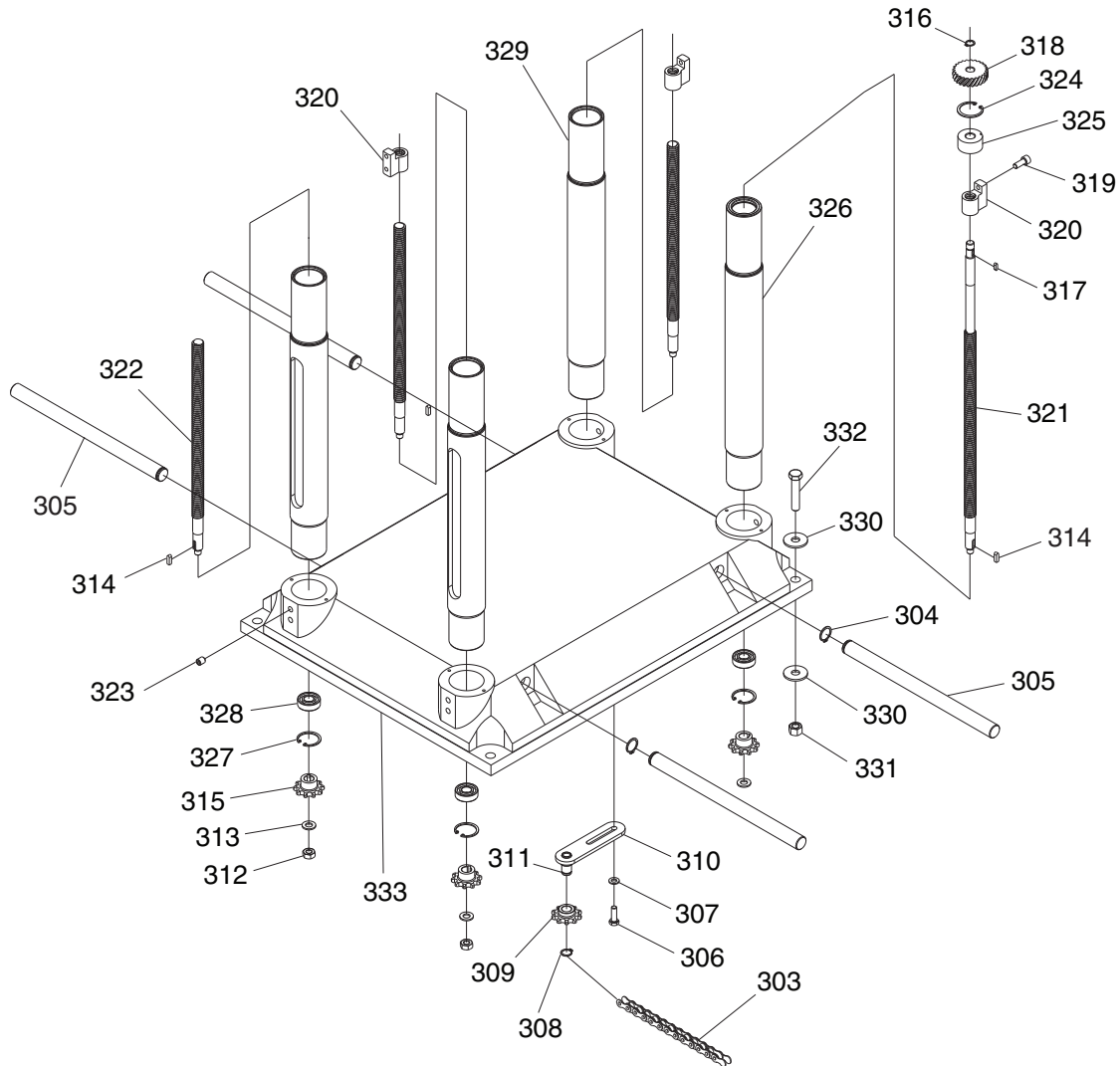


REF	PART #	DESCRIPTION
203	PSS09M	SET SCREW M8-1.25 X 20
204	PB26M	HEX BOLT M8-1.25 X 30
205	PW01M	FLAT WASHER 8MM
206	PLW04M	LOCK WASHER 8MM
207	P0453207	TABLE EXTENSION WING
208	P0453208	STAR KNOB M12-1.75
209	P0453209	LOCK BOLT

REF	PART #	DESCRIPTION
210	P0453210	GIB
211	P0453211	WEDGE DOG
212	PSS11M	SET SCREW M6-1 X 16
213	P0453213	ECCENTRIC SHAFT
214	G3845	BALL BEARING 608ZZ
215	P0453215	BED ROLLER
216	P0453216	MAIN TABLE



G0453 Columns Breakdown



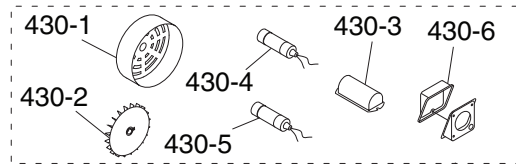
REF	PART #	DESCRIPTION
303	P0453303	CHAIN 12.7 AX 134
304	PR05M	EXT RETAINING RING 15MM
305	P0453305	LIFTING BAR
306	PB09M	HEX BOLT M8-1.25 X 20
307	PW01M	FLAT WASHER 8MM
308	PR05M	EXT RETAINING RING 15MM
309	P0453309	SPROCKET
310	P0453310	BRACKET
311	P0453311	SHAFT
312	PN02M	HEX NUT M10-1.5
313	PW04M	FLAT WASHER 10MM
314	PK08M	KEY 5 X 5 X 16
315	P0453315	SPROCKET
316	PR03M	EXT RETAINING RING 12MM
317	PK69M	KEY 4 X 4 X 12
318	P0453318	GEAR

REF	PART #	DESCRIPTION
319	PSB02M	CAP SCREW M6-1 X 20
320	P0453320	LEADSCREW NUT
321	P0453321	PRIMARY LEADSCREW
322	P0453322	SECONDARY LEADSCREW
323	PSS13M	SET SCREW M10-1.5 X 12
324	PR23M	INT RETAINING RING 40MM
325	P0453325	BUSHING
326	P0453326	PRIMARY COLUMN
327	PR24M	INT RETAINING RING 42MM
328	P6302	BALL BEARING 6302
329	P0453329	SECONDARY COLUMN
330	PW06M	FLAT WASHER 12MM
331	PN09M	HEX NUT M12-1.75
332	PB24M	HEX BOLT M12-1.75 X 45
333	P0453333	BASE

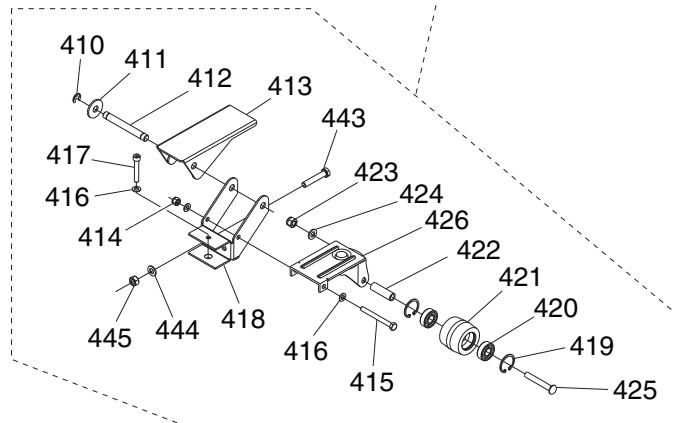
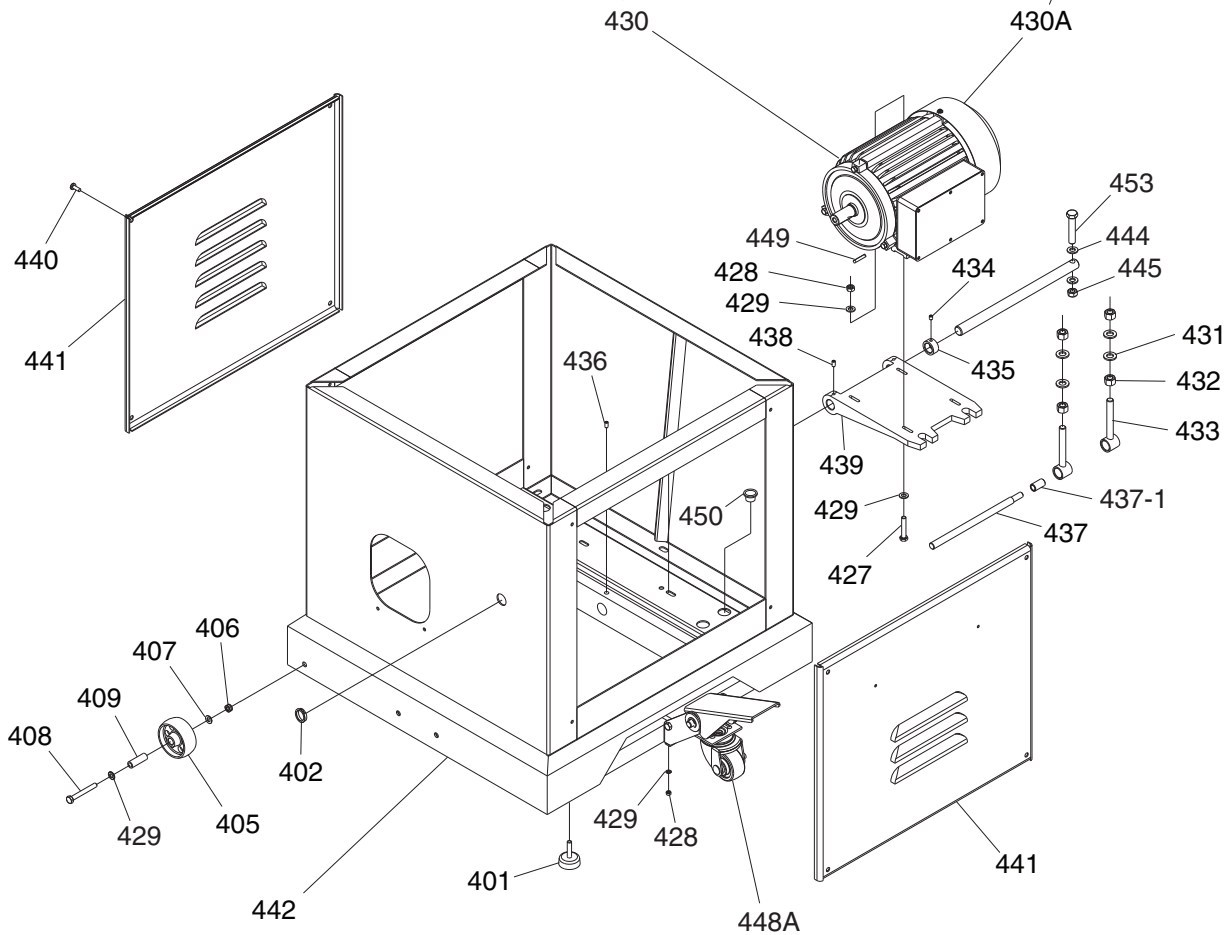
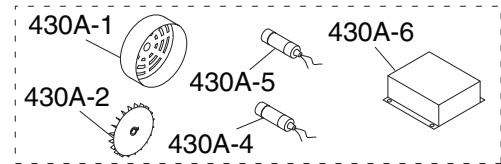


G0453 Cabinet Stand Breakdown

For Machine Manufacture Date
Prior to 03/08



For Machine Manufacture Date
of 03/08 or After



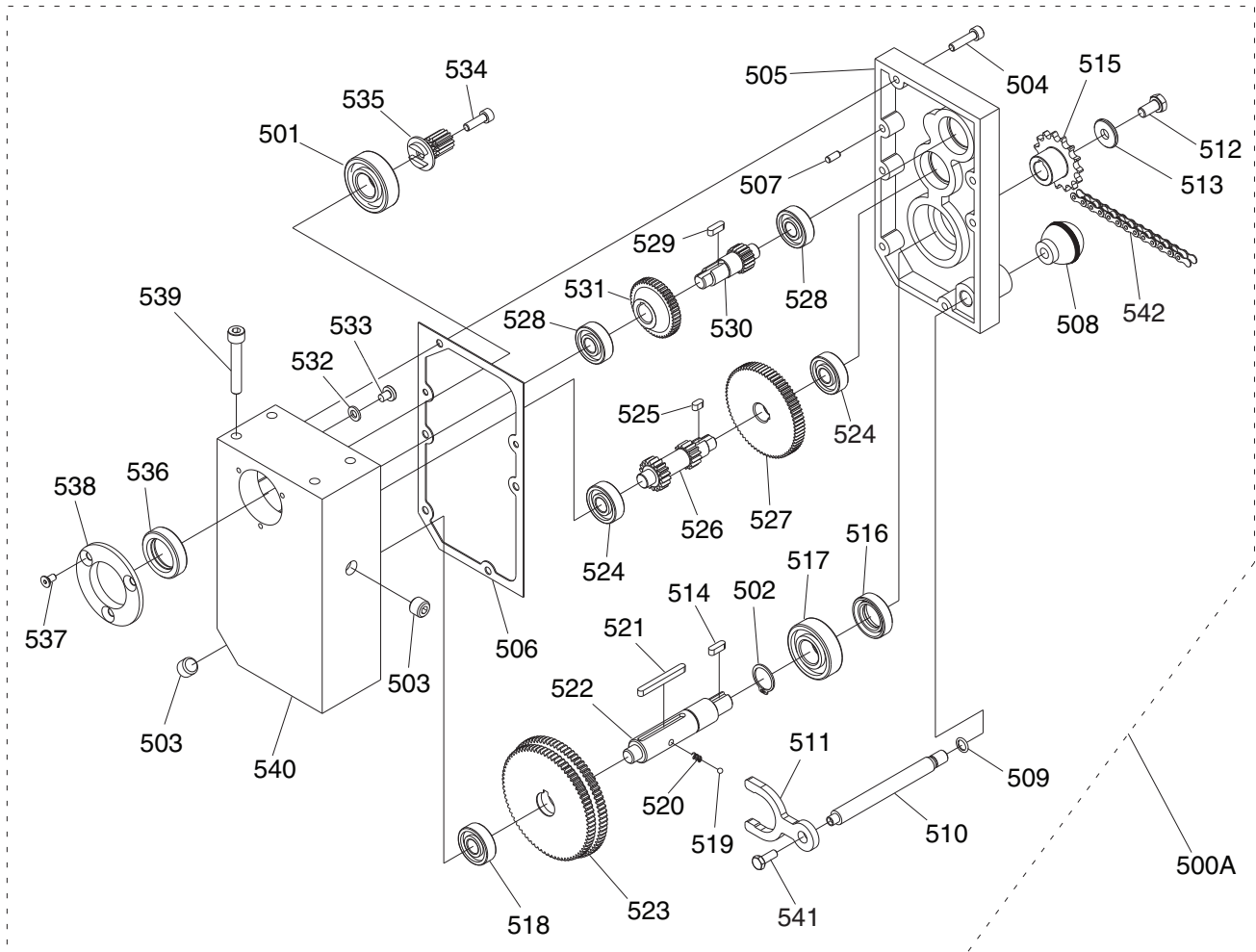
G0453 Cabinet Stand Parts List

REF	PART #	DESCRIPTION
401	P0453401	RUBBER FOOT
402	P0453402	RELIEF BUSHING
405	P0453405	UNIVERSAL WHEEL
406	PN03M	HEX NUT M8-1.25
407	PW01M	FLAT WASHER 8MM
408	PB86M	HEX BOLT M8-1.25 X 65
409	P0453409	SLEEVE
410	PR16M	EXT RETAINING RING 9MM
411	PW06M	FLAT WASHER 12MM
412	P0453412	SHAFT 12MM
413	P0453413	PEDAL
414	PN03M	HEX NUT M8-1.25
415	PB45M	HEX BOLT M8-1.25 X 100
416	PW01M	FLAT WASHER 8MM
417	PB22M	HEX BOLT M8-1.25 X 50
418	P0453418	BRACKET
419	PR21M	INT RETAINING RING 35MM
420	P6206-2RS	BALL BEARING 6206 2RS
421	P0453421	TROLLEY WHEEL
422	P0453422	SLEEVE
423	PLN09M	LOCK NUT M12-1.75
424	PW06M	FLAT WASHER 12MM
425	P0453425	SPECIAL BOLT
426	P0453426	TROLLEY UNIVERSAL KIT
427	PB118M	HEX BOLT M8-1.25 X 45
428	PN03M	HEX NUT M8-1.25
429	PW01M	FLAT WASHER 8MM
430	P0453430	MOTOR 3HP 220V 1PH V1.02.06
430-1	P0453430-1	MOTOR FAN COVER V1.02.06
430-2	P0453430-2	MOTOR FAN V1.02.06

REF	PART #	DESCRIPTION
430-3	P0453430-3	CAPACITOR COVER
430-4	P0453430-4	RUN CAPACITOR 20UF 250VAC
430-5	P0453430-5	START CAPACITOR 500UF 125VAC
430-6	P0453430-6	JUNCTION BOX V1.02.06
430A	P0453430A	MOTOR 3HP 220V 1PH V2.03.08
430A-1	P0453430A-1	MOTOR FAN COVER V2.03.08
430A-2	P0453430A-2	MOTOR FAN V2.03.08
430A-4	P0453430A-4	R CAPACITOR 20M 400V V2.03.08
430A-5	P0453430A-5	S CAPACITOR 200M 250V V2.03.08
430A-6	P0453430A-6	JUNCTION BOX V2.03.08
431	PW06M	FLAT WASHER 12MM
432	PN09M	HEX NUT M12-1.75
433	P0453433	ADJUST BOLT
434	PSS03M	SET SCREW M6-1 X 8
435	P0453435	COLLAR
436	PSS14M	SET SCREW M8-1.25 X 12
437	P0453437	PLATE CONNECTING ROD
437-1	P0453437-1	BUSHING
438	PSS04M	SET SCREW M6-1 X 12
439	P0453439	MOTOR PLATE
440	PFH06M	FLAT HD SCR M6-1 X 20
441	P0453441	CABINET COVER
442	P0453442	CABINET STAND
443	PB143M	HEX BOLT M12-1.75 X 120
444	PW04M	FLAT WASHER 10MM
445	PN02M	HEX NUT M10-1.5
448A	P0453448A	FOOT PEDAL ASSEMBLY
449	P0453449	KEY 5 X 5 X 30
450	P0453450	BALL STRAIN RELIEF
453	PB160M	HEX BOLT M10-1.5 X 70



G0453 Gearbox Breakdown

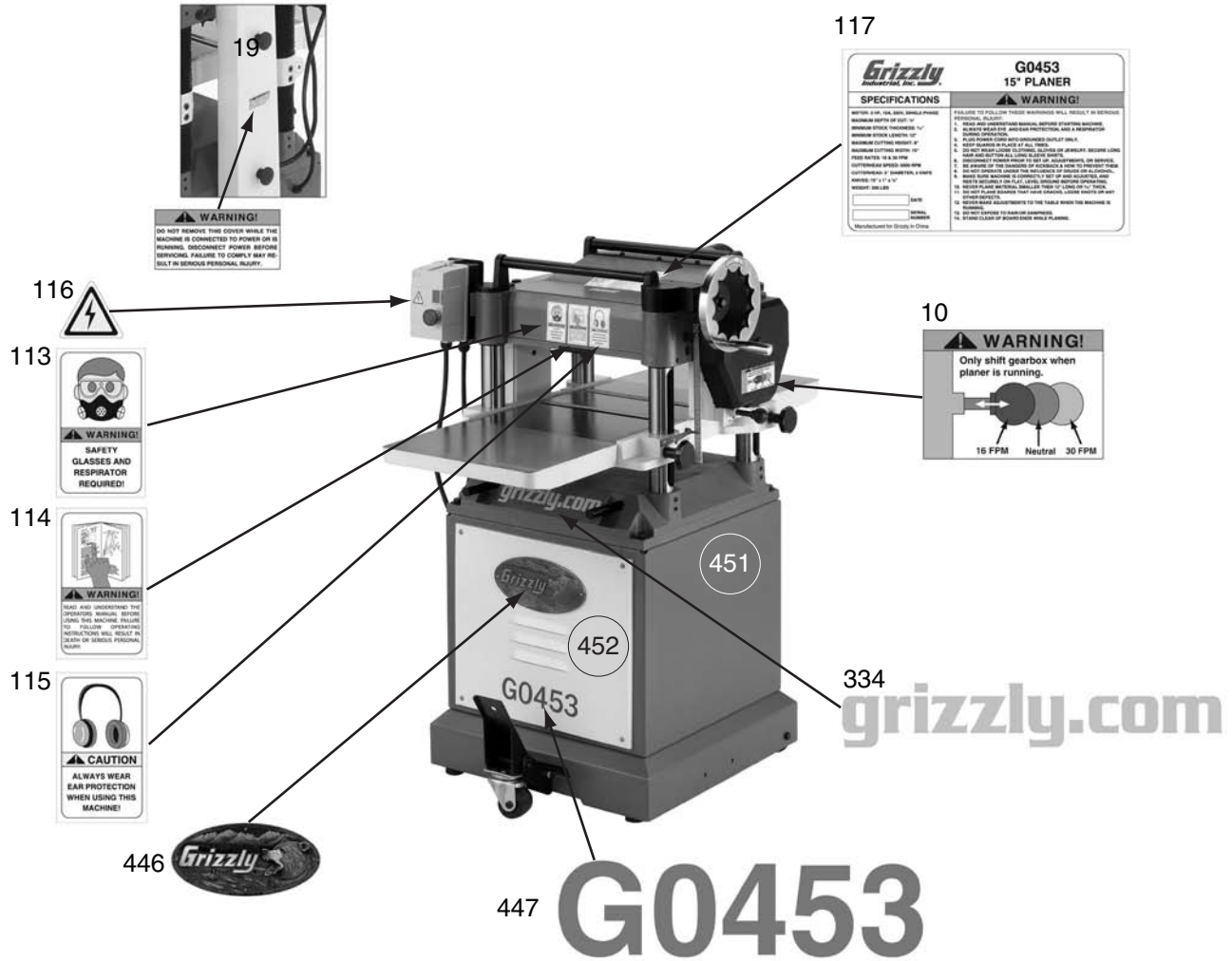


REF	PART #	DESCRIPTION
500A	P0454500A	GEARBOX ASSEMBLY
501	P6204	BALL BEARING 6204ZZ
502	PR09M	EXT RETAINING RING 20MM
503	P0453503	OIL PLUG
504	PSB06M	CAP SCREW M6-1 X 25
505	P0453505	GEARBOX BASE
506	P0453506	GASKET
507	P0453507	PIN 5 X 10
508	P0453508	BALL KNOB M10-1.5
509	PORP016	O-RING 15.8 X 2.4 P16
510	P0453510	HANDLE SHAFT
511	P0453511	SHIFTING FORK
512	PB03M	HEX BOLT M8-1.25 X 16
513	PW01M	FLAT WASHER 8MM
514	PK08M	KEY 5 X 5 X 16
515	P0453515	SPROCKET
516	P0453516	OIL SEAL 20 X 35 X 7
517	P6204	BALL BEARING 6204ZZ
518	P6201	BALL BEARING 6201ZZ
519	P0453519	STEEL BALL 4MM
520	P0453520	COMPRESSION SPRING
521	PK36M	KEY 5 X 5 X 50

REF	PART #	DESCRIPTION
522	P0453522	SHAFT
523	P0453523	GEAR
524	P6201	BALL BEARING 6201ZZ
525	PK06M	KEY 5 X 5 X 10
526	P0453526	GEAR SHAFT
527	P0453527	GEAR
528	P6201	BALL BEARING 6201ZZ
529	PK19M	KEY 5 X 5 X 14
530	P0453530	GEAR SHAFT
531	P0453531	GEAR
532	PW03M	FLAT WASHER 6MM
533	PS03M	PHLP HD SCR M6-1 X 8
534	PSS25M	SET SCREW M6-1 X 20
535	P0453535	GEAR 14T
536	P0453536	OIL SEAL 25 X 40 X 10
537	PSB33M	CAP SCREW M5-.8 X 12
538	P0453538	FLANGE COVER
539	PSB05M	CAP SCREW M8-1.25 X 50
540	P0453540	GEARBOX COVER
541	PFB01M	FLANGE BOLT M6-1 X 12
542	P0453542	CHAIN 06B-1 X 49



G0453 Label Placement



REF	PART #	DESCRIPTION
10	P0453010	SPEED CHANGE LABEL
19	P0453019	BELT COVER LABEL
113	PLABEL-37	RESPIRATOR/GLASSES LABEL VL
114	PLABEL-12	READ MANUAL LABEL VL
115	PLABEL-15	EAR PROTECTION LABEL VL
116	PLABEL-14	ELECTRICITY LABEL

REF	PART #	DESCRIPTION
117	P0453117	MACHINE ID LABEL
334	P0453334	GRIZZLY.COM LABEL
446	G8588	GRIZZLY NAMEPLATE
447	P0453447	MODEL NUMBER LABEL
451	PPAINT-1	GRIZZLY GREEN TOUCH UP PAINT
452	PPAINT-11	GRIZZLY PUTTY TOUCH UP PAINT

WARNING

Safety labels warn about machine hazards and ways to prevent injury. The owner of this machine **MUST** maintain the original location and readability of the labels on the machine. If any label is removed or becomes unreadable, **REPLACE** that label before using the machine again. Contact Grizzly at (800) 523-4777 or www.grizzly.com to order new labels.

