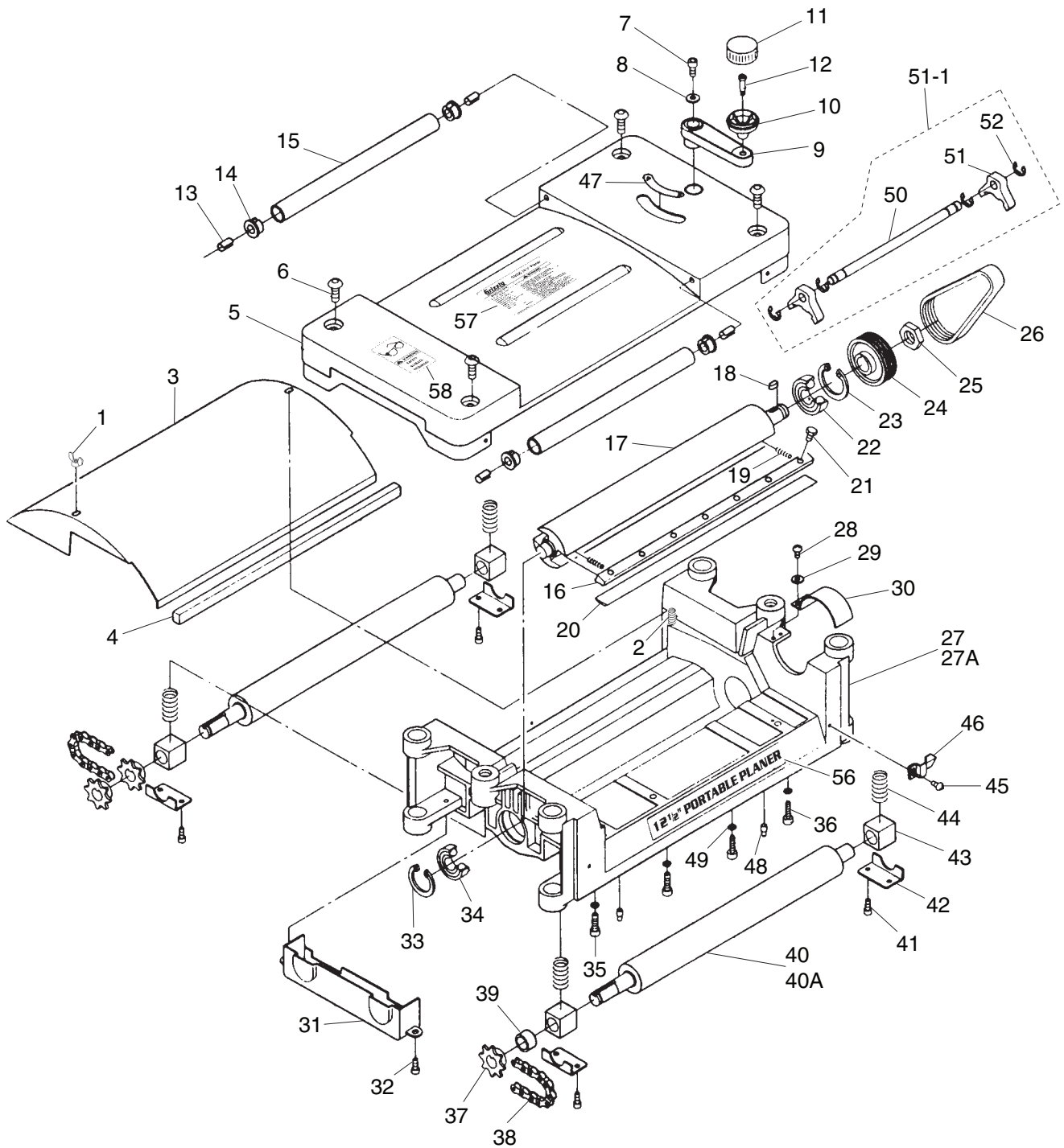


# SECTION 8: PARTS

## Head Breakdown



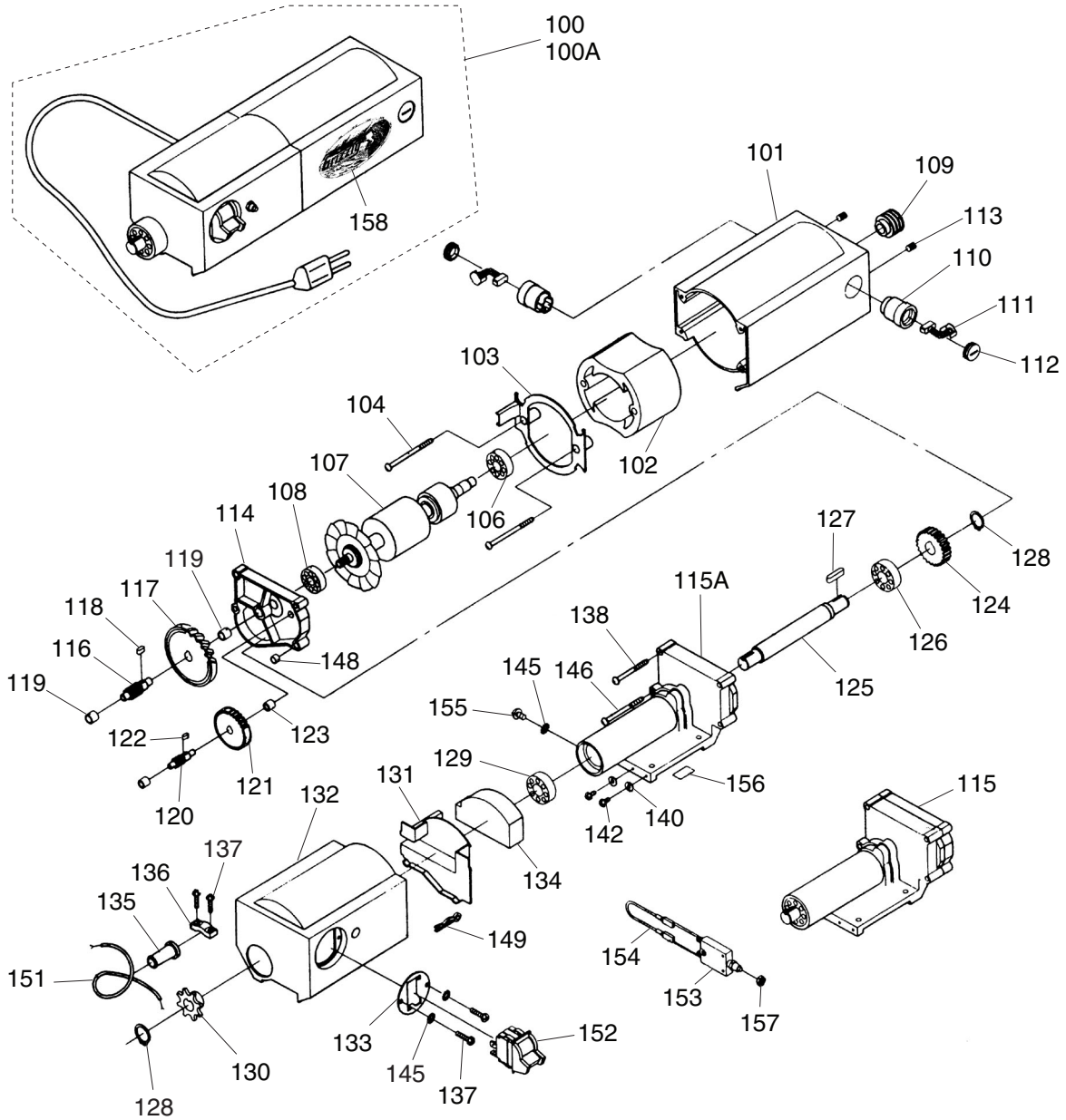
# Head Parts List

| REF | PART #    | DESCRIPTION                    |
|-----|-----------|--------------------------------|
| 1   | P0505001  | WING NUT M5-.8                 |
| 2   | P0505002  | THREADED STUD M5-.8 X 50       |
| 3   | P0505003  | CHIP DEFLECTOR                 |
| 4   | P0505004  | SPONGE PIECE                   |
| 5   | P0505005  | TOP COVER                      |
| 6   | PSBS03M   | BUTTON HD CAP SCR M8-1.25 X 16 |
| 7   | PSB01M    | CAP SCREW M6-1 X 16            |
| 8   | PLW03M    | LOCK WASHER 6MM                |
| 9   | P0505009  | ELEVATION CRANK                |
| 10  | P0505010  | HANDLE KNOB BASE               |
| 11  | P0505011  | HANDLE KNOB                    |
| 12  | P0505012  | HANDLE SHAFT                   |
| 13  | PRP07M    | ROLL PIN 6 X 20                |
| 14  | P0505014  | BUSHING                        |
| 15  | P0505015  | ROLLER                         |
| 16  | P0505016  | GIB                            |
| 17  | P0505017  | CUTTERHEAD                     |
| 18  | PK06M     | KEY 5 X 5 X 10                 |
| 19  | P0505019  | SPRING D3                      |
| 20  | P0505020  | KNIVES DOUBLE SIDED (2PC SET)  |
| 21  | P0505021  | GIB LOCK SCREW M6-1.0          |
| 22  | P6203     | BALL BEARING 6203ZZ            |
| 23  | PR23M     | INT RETAINING RING 40MM        |
| 24  | P0505024  | CUTTERHEAD PULLEY              |
| 25  | PN29M     | HEX NUT M18-2.5                |
| 26  | P0505026  | RIBBED V-BELT 6 RIB/14" OD     |
| 27  | P0505027  | UPPER FRAME V1.12.02           |
| 27A | P0505027A | UPPER FRAME V2.04.04           |
| 28  | PS07M     | PHLP HD SCR M4-.7 X 8          |

| REF  | PART #     | DESCRIPTION                    |
|------|------------|--------------------------------|
| 29   | PW05M      | FLAT WASHER 4MM                |
| 30   | P0505030   | PULLEY GUARD                   |
| 31   | P0505031   | CHAIN GUARD                    |
| 32   | PS05M      | PHLP HD SCR M5-.8 x 8          |
| 33   | PR21M      | INT RETAINING RING 35MM        |
| 34   | P6202      | BALL BEARING 6202ZZ            |
| 35   | PSB02M     | CAP SCREW M6-1 X 20            |
| 36   | PHTEK7M    | TAP SCREW M6 X 20              |
| 37   | P0505037   | CHAIN SPROCKET V2.07.04        |
| 38   | P0505038   | CHAIN                          |
| 39   | P0505039   | SPACING COLLAR                 |
| 40   | P0505040   | FEED ROLLER NO KEYWAY V2.07.04 |
| 40A  | P0505040A  | FEED ROLLER W/KEYWAY V1.12.02  |
| 41   | PS09M      | PHLP HD SCR M5-.8 X 10         |
| 42   | P0505042   | ROLLER BRACKET                 |
| 43   | P0505043   | ROLLER BUSHING                 |
| 44   | P0505044   | BRACKET SPRING D10             |
| 45   | PS07M      | PHLP HD SCR M4-.7 X 8          |
| 46   | P0505046   | INDICATOR                      |
| 47   | P0505047   | DIRECTION LABEL                |
| 48   | P0505048   | FRAME PIN                      |
| 49   | PLW03M     | LOCK WASHER 6MM                |
| 50   | P0505050   | KNIFE GAUGE ROD                |
| 51   | P0505051   | KNIFE GAUGE                    |
| 51-1 | P0505051-1 | COMPLETE KNIFE GAUGE ASSY      |
| 52   | PEC10M     | E-CLIP 9MM                     |
| 56   | P0505056   | 12-1/2" PLANER LABEL           |
| 57   | P0505057   | MACHINE ID LABEL               |
| 58   | PLABEL-11A | SAFETY GLASSES LABEL           |



# Motor Assembly Breakdown



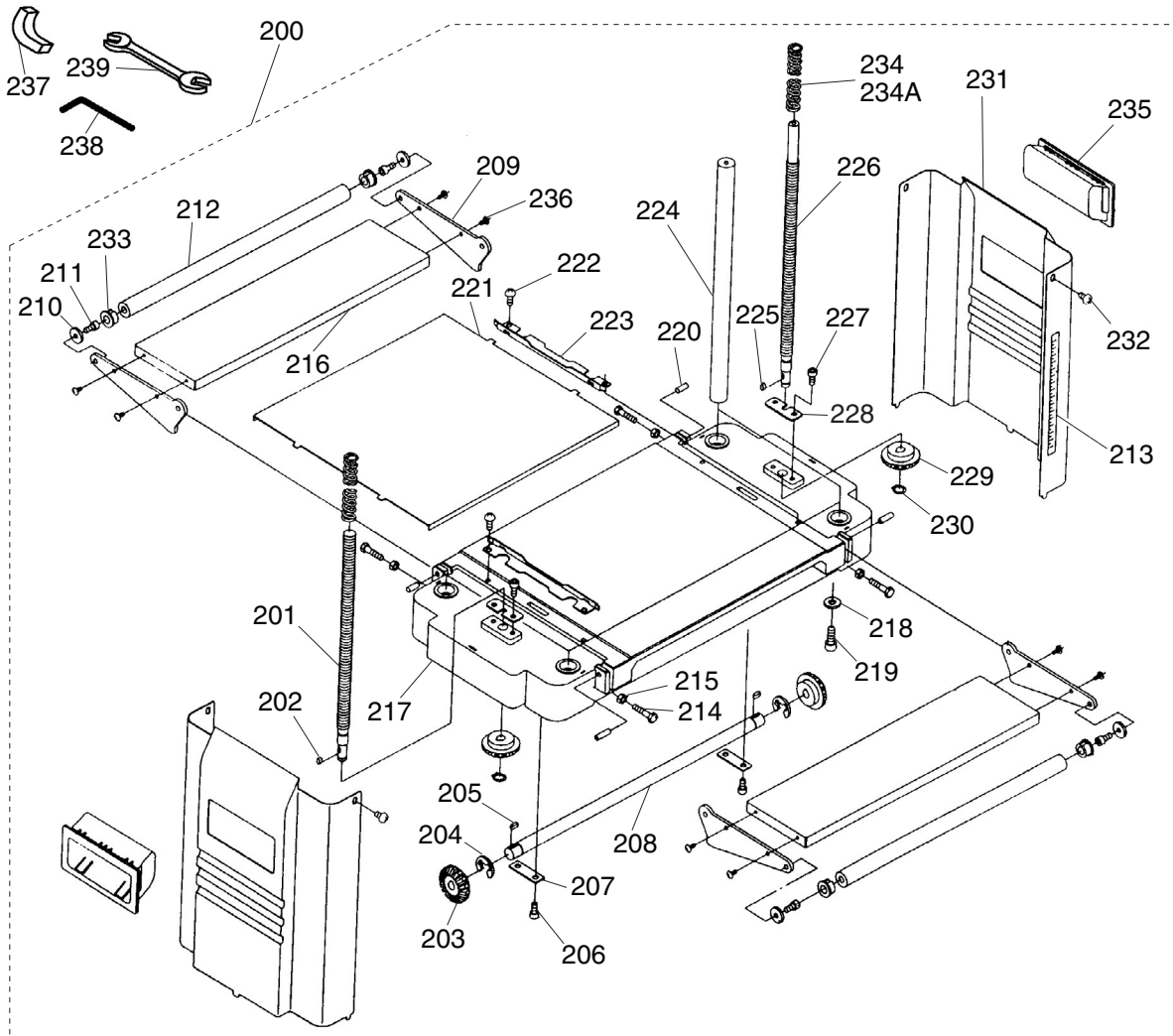
# Motor Assembly Parts List

| REF  | PART #    | DESCRIPTION                   |
|------|-----------|-------------------------------|
| 100  | P0505100  | MOTOR ASSY W/KEYWAY V1.12.02  |
| 100A | P0505100A | MOTOR ASSY NO KEYWAY V2.07.04 |
| 101  | P0505101  | MOTOR CASING                  |
| 102  | P0505102  | STATOR ASSEMBLY               |
| 103  | P0505103  | PLATE                         |
| 104  | PHTEK14   | TAP SCREW #10 X 2 3/4         |
| 106  | P6201     | BALL BEARING 6201ZZ           |
| 107  | P0505107  | ROTOR ASSEMBLY                |
| 108  | P6200     | BALL BEARING 6200ZZ           |
| 109  | P0505109  | MOTOR PULLEY                  |
| 110  | P0505110  | BRUSH HOUSING                 |
| 111  | P0505111  | CARBON BRUSH ASSY             |
| 112  | P0505112  | THREADED BRUSH COVER          |
| 113  | PSS05M    | SET SCREW M5-.8 X 10          |
| 114  | P0505114  | GEAR BOX COVER                |
| 115  | P0505115  | GEAR BOX W/KEYWAY V1.12.02    |
| 115A | P0505115A | GEAR BOX NO KEYWAY V2.07.04   |
| 116  | P0505116  | GEAR SHAFT                    |
| 117  | P0505117  | GEAR 70T                      |
| 118  | PK29M     | KEY 4 X 4 X 8                 |
| 119  | P0505119  | BRONZE BRUSH                  |
| 120  | P0505120  | GEAR SHAFT                    |
| 121  | P0505121  | GEAR 46T                      |
| 122  | PK73M     | KEY 3 X 3 X 7                 |
| 123  | P0505123  | BUSHING                       |
| 124  | P0505124  | GEAR 33T                      |
| 125  | P0505125  | SHAFT                         |

| REF | PART #   | DESCRIPTION                 |
|-----|----------|-----------------------------|
| 126 | P6202    | BALL BEARING 6202ZZ         |
| 127 | PK05M    | KEY 4 X 4 X 10              |
| 128 | PR05M    | EXT RETAINING RING 15MM     |
| 129 | P6002    | BALL BEARING 6002ZZ         |
| 130 | P0505130 | SPROCKET NO KEYWAY V2.07.04 |
| 131 | P0505131 | SPACING PLATE               |
| 132 | P0505132 | GEAR BOX HOUSING            |
| 133 | P0505133 | SWITCH GUARD (BLACK)        |
| 134 | P0505134 | DUST GUARD PLUG             |
| 135 | P0505135 | STRAIN RELIEF               |
| 136 | P0505136 | ELECTRICAL WIRE CLAMP       |
| 137 | PHTEK6M  | TAP SCREW M4 X 16           |
| 138 | PHTEK15  | TAP SCREW #10 X 2           |
| 140 | PW05M    | FLAT WASHER 4MM             |
| 142 | PS07M    | PHLP HD SCR M4-.7 X 8       |
| 145 | PTLW02M  | EXT TOOTH WASHER 5MM        |
| 146 | PHTEK16  | TAP SCREW #10 X 2 5/16      |
| 148 | P0505148 | POSITIONING PIN             |
| 149 | P0505149 | HAIRPIN COTTER PIN          |
| 151 | P0505151 | POWER WIRES                 |
| 152 | P0505152 | SAFETY SWITCH               |
| 153 | P0505153 | TEMPERATURE SWITCH          |
| 154 | P0505154 | TEMPERATURE SWITCH WIRE     |
| 155 | PS05M    | PHLP HD SCR M5-.8 x 8       |
| 156 | P0505156 | MOTOR LABEL                 |
| 157 | PN02M    | HEX NUT M10-1.5             |
| 158 | P0505158 | GRIZZLY LABEL (COLOR)       |



# Base Breakdown



| REF | PART #   | DESCRIPTION                     |
|-----|----------|---------------------------------|
| 200 | P0505200 | BASE ASSEMBLY                   |
| 201 | P0505201 | LEFT LEADSCREW M8-1.25 X 60     |
| 202 | PK29M    | KEY 4 X 4 X 8                   |
| 203 | P0505203 | BEVEL GEAR                      |
| 204 | PEC015M  | E-CLIP 8MM                      |
| 205 | PK29M    | KEY 4 X 4 X 8                   |
| 206 | PSB04M   | CAP SCREW M6-1 X 10             |
| 207 | P0505207 | FIXING PIECE                    |
| 208 | P0505208 | TRANSMISSION SHAFT              |
| 209 | P0505209 | EXTENSION WING BRACKET          |
| 210 | PW03M    | FLAT WASHER 6MM                 |
| 211 | PSB04M   | CAP SCREW M6-1 X 10             |
| 212 | P0505212 | EXTENSION WING ROLLER 14-5/16"L |
| 213 | P0505213 | DEPTH SCALE LABEL               |
| 214 | PB10M    | HEX BOLT M6-1 X 25              |
| 215 | PN01M    | HEX NUT M6-1                    |
| 216 | P0505216 | EXTENSION WING                  |
| 217 | P0505217 | BASE                            |
| 218 | PW07     | FLAT WASHER 5/16                |
| 219 | PSB14M   | CAP SCREW M8-1.25 X 20          |
| 220 | PRP07M   | ROLL PIN 6 X 20                 |

| REF  | PART #    | DESCRIPTION                  |
|------|-----------|------------------------------|
| 221  | P0505221  | MAIN TABLE                   |
| 222  | PS05M     | PHLP HD SCR M5-.8 x 8        |
| 223  | P0505223  | GUIDE PLATE                  |
| 224  | P0505224  | COLUMN                       |
| 225  | PK29M     | KEY 4 X 4 X 8                |
| 226  | P0505226  | RIGHT LEADSCREW M10-1.5 X 60 |
| 227  | PSB04M    | CAP SCREW M6-1 X 10          |
| 228  | P0505228  | FIXING PIECE                 |
| 229  | P0505229  | BEVEL GEAR                   |
| 230  | PR01M     | EXT RETAINING RING 10MM      |
| 231  | P0505231  | SIDE PANEL                   |
| 232  | PS19M     | PHLP HD SCR M5-.8 x 6        |
| 233  | P0505233  | ROLLER BUSHING               |
| 234  | P0505234  | LEADSCREW SPRING V1.12.02    |
| 234A | P0505234A | LEADSCREW SPRING V2.04.04    |
| 235  | P0505235  | CARRYING HANDLE              |
| 236  | PS07M     | PHLP HD SCR M4-.7 X 8        |
| 237  | P0505237  | RUBBER FOOT                  |
| 238  | PAW05M    | HEX WRENCH 5MM               |
| 239  | P0505239  | DOUBLE-END WRENCH 8 X 8MM    |

