



# MODEL G0510Z 3/4 HP SHAPER MANUAL UPDATE

This update covers changes made to the owner's manual after it was printed. Keep this update with your owner's manual for future reference. Before operating your new machine, you **MUST** read and understand this insert and the entire Model G0510Z manual to reduce the risk of injury from improper use or setup. *If you have questions, contact Tech Support at (570) 546-9663 or by email at [techsupport@grizzly.com](mailto:techsupport@grizzly.com).*

## What has changed?

The inventory has changed to reflect an improved tool set now included with the Model G0510Z. All page references made on this insert refer to the pages in the original Model G0510Z manual.

### Removed Inventory

Refer to **Piece Inventory** on **Page 10**. These items are no longer included with the machine.

- L. Flat Wrench 23, 26, 30mm..... 1 Each
- R. Wrenches 8, 14mm ..... 1 Each

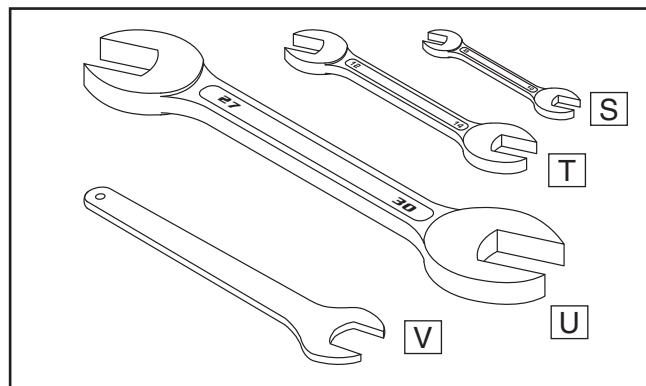
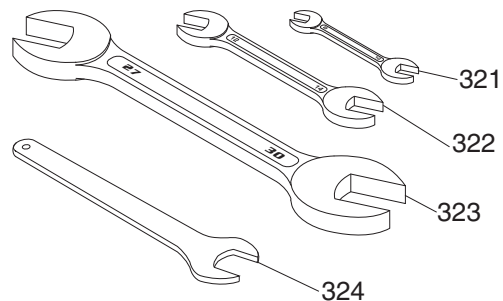
### Additional Inventory (Figure 1)

The following items are now included with the Model G0510Z.

- S. Combo Wrench 8/10mm ..... 1
- T. Combo Wrench 12/14mm ..... 1
- U. Combo Wrench 27/30mm ..... 1
- V. Flat Wrench 27mm..... 1

### Additional Inventory Breakdown & Parts List

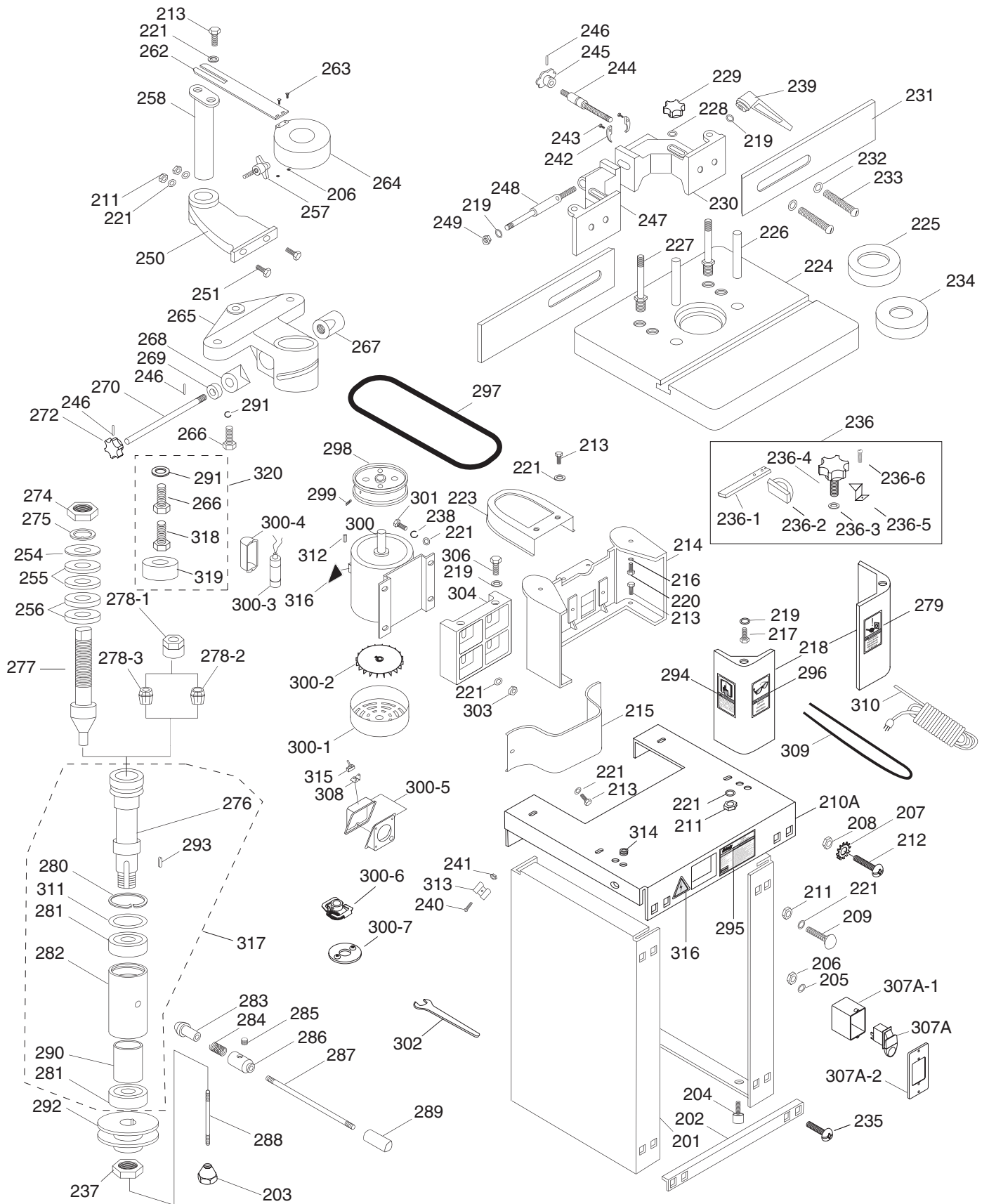
Use this breakdown and parts list together with those on **Pages 36–38**.



**Figure 1.** Additional inventory.

REF	PART #	DESCRIPTION
321	PWR810	WRENCH 8 X 10
322	PWR1214	COMBO WRENCH 12/14MM
323	P0510Z323	WRENCH 27/30MM
324	P0510Z324	FLAT WRENCH 27MM

# G0510Z Parts Breakdown & List



REF	PART #	DESCRIPTION
201	P0510Z201	SIDE PANEL
202	P0510Z202	TIE BAR
203	P0510Z203	TAPER NUT M8-1.25
204	P0510Z204	RUBBER FOOT
205	PW05M	FLAT WASHER 4MM
206	PN04M	HEX NUT M4-.7
207	PTLW02M	EXT TOOTH WASHER 5MM
208	PN06M	HEX NUT M5-.8
209	PCB02	CARRIAGE BOLT 5/16-18 X 1/2
210A	P0510Z210A	SHELF V2.07.07
211	PN02	HEX NUT 5/16-18
212	PS08M	PHLP HD SCR M5-.8 X 12
213	PB06M	HEX BOLT M8-1.25 X 12
214	P0510Z214	TABLE SUPPORT
215	P0510Z215	SPINDLE PULLEY GUARD
216	PLW07	LOCK WASHER 1/2"
217	PB49M	HEX BOLT M12-1.75 X 20
218	P0510Z218	TABLE LEG
219	PW01	FLAT WASHER 1/2"
220	PB25M	HEX BOLT M12-1.75 X 25
221	PW02	FLAT WASHER 3/8"
223	P0510Z223	BELT GUARD
224	P0510Z224	WORKING TABLE
225	P0510Z225	TABLE INSERT 1-3/4"
226	P0510Z226	TAPER PIN
227	P0510Z227	CLAMP STUD
228	PW07	FLAT WASHER 5/16"
229	P0510Z229	STAR KNOB (FEMALE) M8-1.25
230	P0510Z230	FENCE BODY RIGHT
231	P0510Z231	WOODEN FENCE
232	PW01M	FLAT WASHER 8MM
233	PS04M	PHLP HD SCR M8-1.25 X 20
234	PW07	TABLE INSERT 1-3/8"
235	PS18M	PHLP HD SCR M4-.7 X 25
236	P0510Z236	COMPLETE MITER GAUGE
236-1	P0510Z236-1	MITER BAR
236-2	P0510Z236-2	MITER GAUGE BODY
236-3	PW03M	FLAT WASHER 6MM
236-4	P0510Z236-4	STAR KNOB M6-1 X 16
236-5	P0510Z236-5	POINTER
236-6	PS07M	PHLP HD SCR M4-.7 X 8
237	P0510Z237	CARTRIDGE NUT M18-1.5
238	PLW04	LOCK WASHER 3/8"
239	P0510Z239	LOCK HANDLE M12-1.75
240	PS14M	PHLP HD SCR M6-1 X 12
241	PN01M	HEX NUT M6-1
242	P0510Z242	HALF COLLAR
243	PS14M	PHLP HD SCR M6-1 X 12
244	P0510Z244	ADJUSTING SCREW STUD
245	P0510Z245	STAR KNOB 8MM, PINNED

REF	PART #	DESCRIPTION
246	PRP42M	ROLL PIN 3 X 20
247	P0510Z247	FENCE BODY LEFT
248	P0510Z248	CLAMP STUD
249	PN09M	HEX NUT M12-1.75
250	P0510Z250	MOUNTING BRACKET
251	PB26M	HEX BOLT M8-1.25 X 30
254	P0510Z254	RUB COLLAR 1/2 X 1-3/16 X 3/16
255	P0510Z255	RUB COLLAR 1/2 X 1-3/16 X 1/4
256	P0510Z256	RUB COLLAR 1/2 X 1-3/16 X 3/8
257	P0510Z257	STAR KNOB BOLT M10-1.5 X 28
258	P0510Z258	GUARD MOUNTING POST
262	P0510Z262	GUARD ATTACHMENT BAR
263	PS02M	PHLP HD SCR M4-.7 X 12
264	P0510Z264	SAFETY GUARD
265	P0510Z265	HOUSING BRACKET
266	PB27M	HEX BOLT M12-1.75 X 30
267	P0510Z267	CLAMP SLEEVE RIGHT
268	P0510Z268	CLAMP SLEEVE LEFT
269	P0510Z269	STUFF RING
270	P0510Z270	LOCK BAR
272	P0510Z272	STAR KNOB 12MM, PINNED
274	P0510Z274	SPINDLE NUT
275	P0510Z275	SAFETY WASHER
276	P0510Z276	SPINDLE CARTRIDGE
277	P0510Z277	CUTTER SPINDLE
278-1	P0510Z278-1	ROUTER BIT COLLET NUT
278-2	P0510Z278-2	ROUTER BIT COLLET 1/2"
278-3	P0510Z278-3	ROUTER BIT COLLET 1/4"
279	PLABEL-26	UNPLUG MACHINE LABEL
280	PR25M	INT RETAINING RING 47MM
281	P6204	BALL BEARING 6204
282	P0510Z282	SPINDLE HOUSING
283	P0510Z283	BEARING CONE
284	P0510Z284	COIL SPRING
285	PSS20M	SET SCREW M8-1.25 X 8
286	P0510Z286	SPRING COLLAR
287	P0510Z287	STUD M12-1.75 X 355
288	P0510Z288	DRAWBAR M8-1.25 X 160
289	P0510Z289	SLIP-ON HANDLE 12MM
290	P0510Z290	BEARING SLEEVE
291	PLW05M	LOCK WASHER 12MM
292	P0510Z292	SPINDLE PULLEY
293	PK48M	KEY 4 X 4 X 20
294	PLABEL-12	READ MANUAL LABEL
295	P0510Z295	ID/WARNING LABEL
296	PLABEL-11	SAFETY GLASSES LABEL
297	P0510Z297	FLAT BELT 690 X 10MM
298	P0510Z298	MOTOR PULLEY
299	PSS01	SET SCREW M6-1 X 10

Continued on next page 

