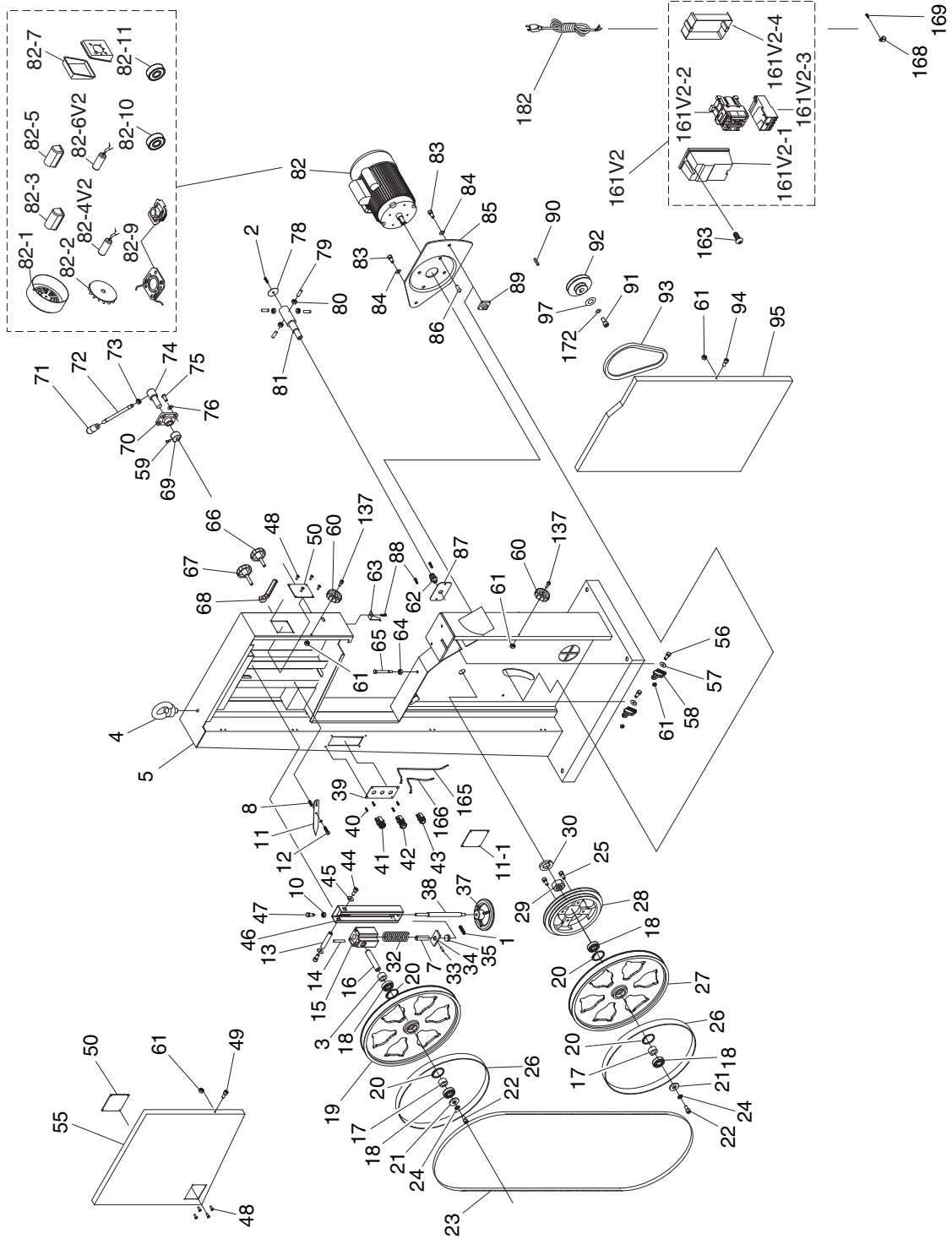


# SECTION 9: PARTS

## G0514X Main



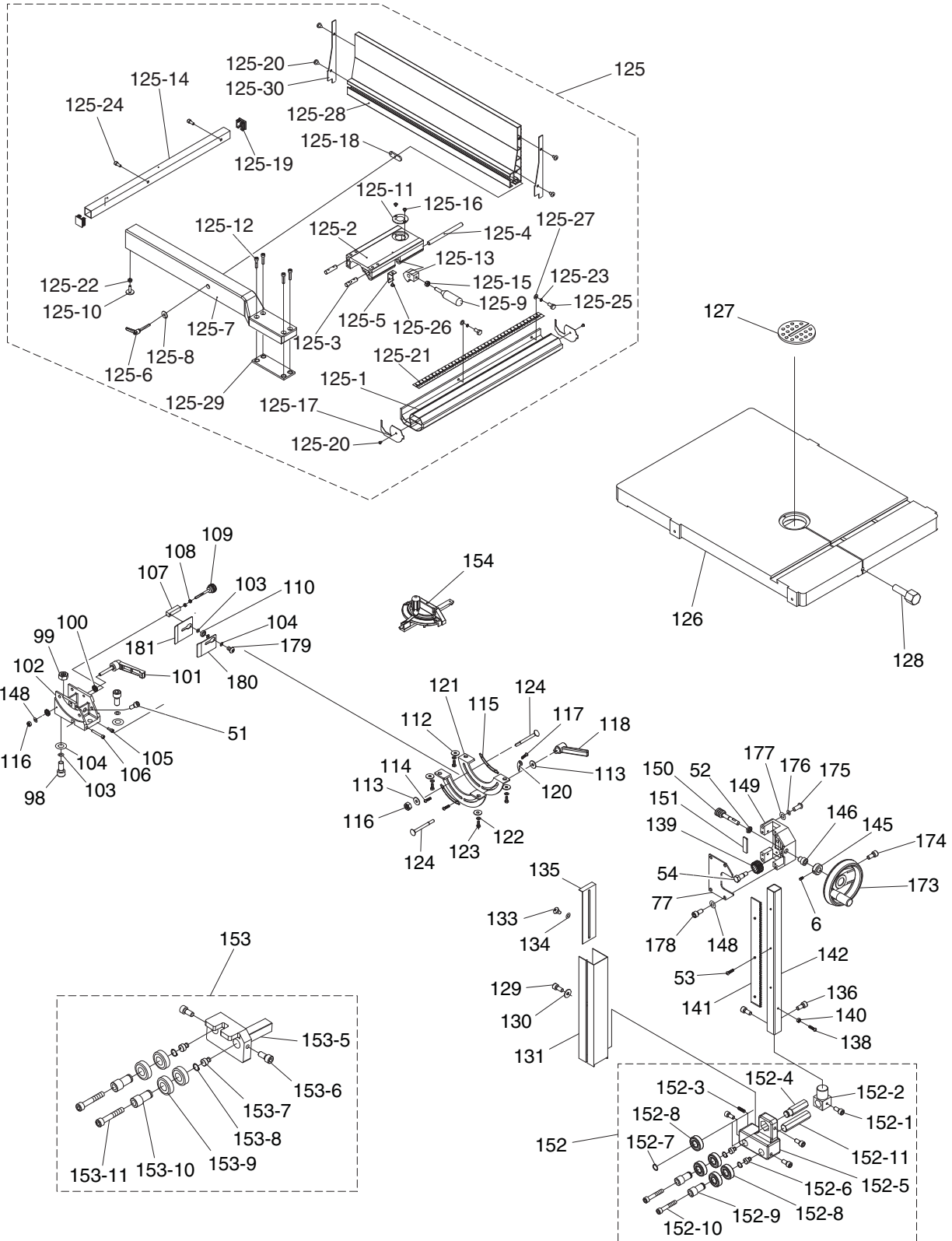
# G0514X Main Parts List

REF	PART #	DESCRIPTION
1	PSS01M	SET SCREW M6-1 X 10
2	PFS07M	FLANGE SCREW M5-.8 X 10
3	P0513X003	BUSHING
4	P0513004	LIFTING EYE BOLT M10-1.5
5	P0514005	MACHINE BODY
7	P0513X007	BUSHING
8	PW03M	FLAT WASHER 6MM
10	PN01M	HEX NUT M6-1
11	P0513011	POINTER
11-1	P0640X221	TENSION SCALE LABEL
12	P0513012	SHOULDER SCREW M4-.7 X 5
13	P0513013	UPPER SHAFT
14	PRP10M	ROLL PIN 5 X 36
15	P0513015	UPPER WHEEL SHAFT HINGE
16	P0513016	UPPER WHEEL SHAFT
17	P0513017	BUSHING
18	P6204-2RS	BALL BEARING 6204 2RS
19	P0514X019	UPPER WHEEL 19"
20	PR25M	INT RETAINING RING 47MM
21	P0514X021	WHEEL FLAT WASHER 8MM
22	PCAP11M	CAP SCREW M8-1.25 X 16
23	P0514023	BLADE 6TPI HOOK 143"
24	PLW04M	LOCK WASHER 8MM
25	PCAP14M	CAP SCREW M8-1.25 X 20
26	T23072	URETHANE TIRE PAIR
27	P0514X027	LOWER WHEEL 19"
28	P0514X028	IDLER PULLEY
29	PN32	HEX NUT 1-14
30	PLW09	LOCK WASHER 1"
32	P0513032	COMPRESSION SPRING
33	PRP02M	ROLL PIN 3 X 16
34	P0513034	LOCATE BLOCK
35	P51201	THRUST BEARING 51201
37	P0513037	HANDWHEEL
38	P0513038	ADJUSTING BOLT
39	P0514X039	CONTROL PANEL PLATE
40	PHTEK15M	TAP SCREW M4 X 10
41	P0514X041	KEYED POWER SWITCH
42	P0514X042	ON BUTTON
43	P0514X043	OFF BUTTON
44	PCAP11M	CAP SCREW M8-1.25 X 16
45	PWF08M	FENDER WASHER 8MM
46	P0513046	UPPER WHEEL SLIDING BRACKET
47	PCAP106M	CAP SCREW M8-1.25 X 90
48	PRIV006M	STEEL BLIND RIVET 3 X 10MM
49	PCAP04M	CAP SCREW M6-1 X 10
50	P0513050	CLEAR WINDOW
55	P0514X055	UPPER WHEEL COVER
56	PCAP06M	CAP SCREW M6-1 X 25
57	PW03M	FLAT WASHER 6MM
58	P0513058	BRUSH
59	PCAP06M	CAP SCREW M6-1 X 25
60	P0513060	STAR HANDLE
61	PLN03M	LOCK NUT 6MM
62	P0513062	STRAIN RELIEF 16MM
63	P0513063	HEIGHT POINTER

REF	PART #	DESCRIPTION
64	PN03M	HEX NUT M8-1.25
65	PB124M	HEX BOLT M8-1.25 X 90
66	P0513066	KNOB SCREW M10-1.5 X 20
67	P0513067	KNOB SCREW M10-1.5 X 55
68	P0513068	THREADED HANDLE 10MM
69	P0513069	CAM
70	P0513070	PILLOW BLOCK
71	P0513071	HANDLE M10-1.5
72	P0513072	LEVER ROD
73	PN09M	HEX NUT M12-1.75
74	P0513074	SHAFT
75	PBHS22M	BUTTON HD CAP SCR M8-1.25 X 20
76	PLW04M	LOCK WASHER 8MM
78	P0513078	COVER
79	PSS09M	SET SCREW M8-1.25 X 20
80	PN03M	HEX NUT M8-1.25
81	P0513081	LOWER WHEEL SHAFT
82	P0514X082	MOTOR 3HP 220V 1PH 60HZ
82-1	P0514X082-1	MOTOR FAN COVER
82-2	P0514X082-2	MOTOR FAN
82-3	P0514X082-3	CAPACITOR COVER
82-4V2	P0514X082-4V2	S CAPACITOR 300M 250V V2.05.11
82-5	P0514X082-3	CAPACITOR COVER
82-6V2	P0514X082-6V2	R CAPACITOR 60M 300V V2.02.11
82-7	P0514X082-7	MOTOR JUNCTION BOX
82-9	P0514X082-9	CENTRIFUGAL SWITCH W/ CONTACT PLATE
82-10	P0514X082-10	FRONT MOTOR BEARING
82-11	P0514X082-11	REAR MOTOR BEARING
83	PB32M	HEX BOLT M10-1.5 X 25
84	PLW06M	LOCK WASHER 10MM
85	P0513085	MOTOR BRACKET
86	PBHS22M	BUTTON HD CAP SCR M8-1.25 X 20
87	P0513087	PLATE
88	PFS07M	FLANGE SCREW M5-.8 X 10
89	P0513089	PILLOW BLOCK
90	PK15M	KEY 5 X 5 X 35
91	PB81M	HEX BOLT M8-1.25 X 20 LH
92	P0514X092	MOTOR PULLEY
93	PVA42	V-BELT A-42 4L420
94	PCAP04M	CAP SCREW M6-1 X 10
95	P0514X095	LOWER WHEEL COVER
97	PWF08M	FENDER WASHER 8MM
137	PCAP02M	CAP SCREW M6-1 X 20
161V2	P0514X161V2	MAG SWITCH ASSY 3HP 220V V2.05.11
161V2-1	P0514X161V2-1	SWITCH FRONT COVER
161V2-2	P0514X161V2-2	CONTACTOR SDE MA-18 220V
161V2-3	P0514X161V2-3	OL RELAY SDE RA-20 12-18A
161V2-4	P0514X161V2-4	SWITCH BACK COVER
163	PFS07M	FLANGE SCREW M5-.8 X 10
165	P0514X165	CONTROL CORD 16G 3W
166	P0514X166	MOTOR CORD 14G 3W
168	P0514X168	CORD CLAMP
169	PFS12M	FLANGE SCREW M5-.8 X 12
172	PLW04M	LOCK WASHER 8MM
182	P0514X182	POWER CORD 14G 3W 6-15



# G0514X Fence/Guides

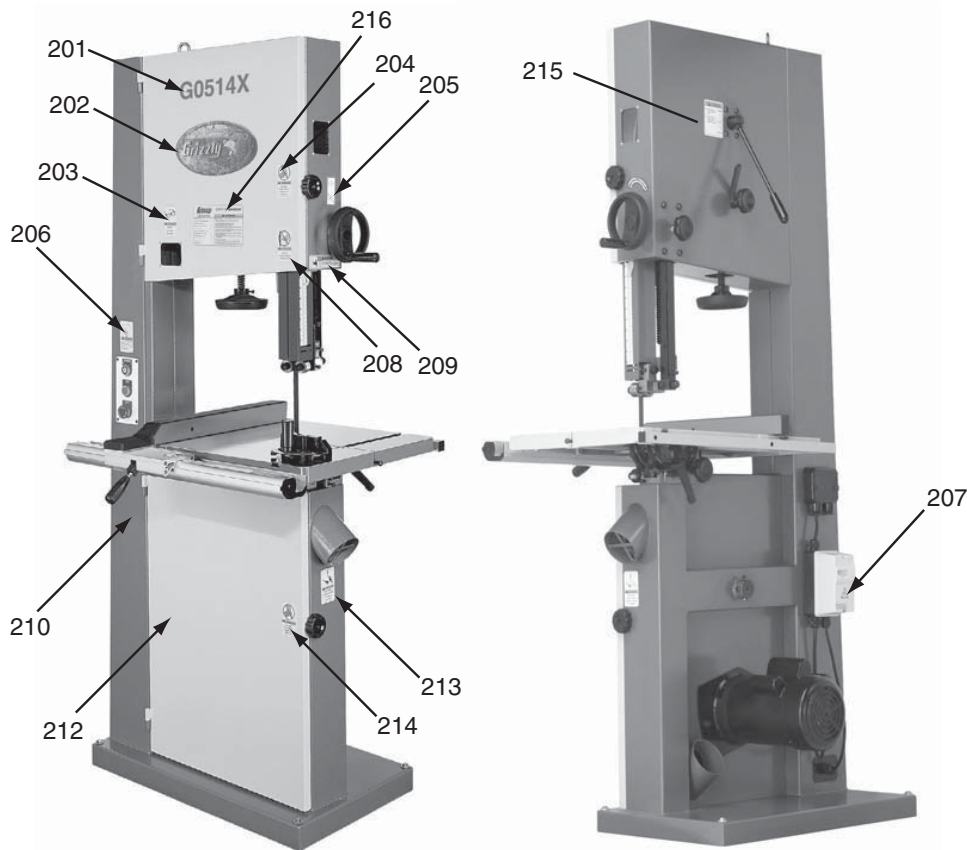


# G0514X Fence/Guide Parts List

REF	PART #	DESCRIPTION
6	PSS07M	SET SCREW M5-.8 X 5
51	PCAP02M	CAP SCREW M6-1 X 20
52	P0514X052	WORM SHAFT THIN NUT
53	PFH31M	FLAT HD SCR M4-.7 X 8
54	P0514X054	STEP BOLT M8-1.25 X 80
77	P0514X077	COVER
98	PCAP84M	CAP SCREW M10-1.5 X 35
99	PN02M	HEX NUT M10-1.5
100	P0513100	SMALL GEAR
101	P0513X101	LOCK HANDLE
102	P0513102	TRUNNION SUPPORT BRACKET
103	PLW06M	LOCK WASHER 10MM
104	PW04M	FLAT WASHER 10MM
105	PB18M	HEX BOLT M6-1 X 20
106	PCAP30M	CAP SCREW M6-1 X 45
107	P0513107	PILLOW BLOCK
108	PN01M	HEX NUT M6-1
109	P0513109	ADJUST BOLT M6
110	P6000ZZ	BALL BEARING 6000ZZ
112	PW01M	FLAT WASHER 8MM
113	PW01M	FLAT WASHER 8MM
114	PS17M	PHLP HD SCR M4-.7 X 6
115	P0513115	GEAR PLATE
116	PLN04M	LOCK NUT M8-1.25
117	PS17M	PHLP HD SCR M4-.7 X 6
118	P0513118	LOCK HANDLE
120	P0513120	POINTER
121	P0514X121	TRUNNION
122	PLW04M	LOCK WASHER 8MM
123	PB03M	HEX BOLT M8-1.25 X 16
124	PCB23M	CARRIAGE BOLT M8-1.25 X 80
125	P0514X125	FENCE ASSEMBLY
125-1	PH7589001	FIXED BASE 710MM
125-2	PH7587002	ADJUST BASE
125-3	PH7587003	FIXED SHAFT
125-4	PH7587004	SHAFT
125-5	PH7587005	SPRING PIECE
125-6	PH7528004	ADJUSTMENT HANDLE M8 X 44
125-7	PH7589007	SUPPORT TUBE 640MM
125-8	PW01M	FLAT WASHER 8MM
125-9	PH7587009	FENCE HANDLE M8-1.25 X 22
125-10	PH7587010	ADJUST SCREW
125-11	PH7587011	CONVEX
125-12	PCAP06M	CAP SCREW M6-1 X 25
125-13	PH7587013	FIXED LUMP
125-14	PH7589014	REAR RAIL 710MM
125-15	PN03M	HEX NUT M8-1.25
125-16	PFS04M	FLANGE SCREW M4-.7 X 6
125-17	PH7587017	GUARD PIECE
125-18	PH7528002	MOVING PLATE
125-19	PH7587019	PLUGGED
125-20	PHTEK3M	TAP SCREW M3.5 X 8
125-21	PH7587021	SCALE
125-22	PN01M	HEX NUT M6-1
125-23	PLW03M	LOCK WASHER 6MM
125-24	PCAP01M	CAP SCREW M6-1 X 16
125-25	PB08M	HEX BOLT M6-1 X 20

REF	PART #	DESCRIPTION
125-26	PFB13M	FLANGE BOLT M4-.7 X 8
125-27	PW03M	FLAT WASHER 6MM
125-28	PH7589028	RESAW FENCE AL 640MM
125-29	PH7587029	SPACER PLATE
125-30	P0514X2B171-3	RESAW FENCE END PLATE
126	P0514X126	TABLE 26-3/4" X 19"
127	T24384	TABLE INSERT
128	P0513X128	TABLE PIN
129	PCAP50M	CAP SCREW M5-.8 X 10
130	PW02M	FLAT WASHER 5MM
131	P0514X131	GUIDE POST COVER
133	P0513X140	SHOULDER SCREW
134	P0513X141	FIBER WASHER 13MM
135	P0513X142	SLIDING PLATE
136	PCAP01M	CAP SCREW M6-1 X 16
138	PS38M	PHLP HD SCR M4-.7 X 10
139	P0513X122	GEAR
140	PN04M	HEX NUT M4-.7
141	P0513X144	RACK
142	P0513X145	UPPER GUIDE TUBE
145	P0514X145	LOCK COLLAR
146	P0513161	BUSHING
148	PLW04M	LOCK WASHER 8MM
149	P0513164	GUIDE BRACKET
150	P0513X134	WORM CYLINDER
151	P0513X135	FIXED PLATE
152	P0514X152	UPPER BLADE GUIDE ASSEMBLY
152-1	PCAP01M	CAP SCREW M6-1 X 16
152-2	P0513X150-2	UPPER GUIDE SUPPORT BLOCK
152-3	PSS01M	SET SCREW M6-1 X 10
152-4	P0513X150-4	ADJUST BAR
152-5	P0513X150-5	UPPER BLADE GUIDE SUPPORT
152-6	P0513X150-6	BIAS SHAFT
152-7	PR05M	EXT RETAINING RING 15MM
152-8	P6202ZZ	BALL BEARING 6202 ZZ
152-9	P0513X150-9	HANDLE BUSHING
152-10	PCAP48M	CAP SCREW M6-1 X 35
152-11	P0513X150-11	UPPER SPACING SLEEVE
153	P0514X153	LOWER BLADE GUIDE ASSEMBLY
153-5	P0513X151-5	LOWER BLADE GUIDE SUPPORT
153-6	PCAP01M	CAP SCREW M6-1 X 16
153-7	P0513X151-7	BIAS SHAFT
153-8	PR05M	EXT RETAINING RING 15MM
153-9	P6202ZZ	BALL BEARING 6202 ZZ
153-10	P0513X151-10	HANDLE BUSHING
153-11	PCAP48M	CAP SCREW M6-1 X 35
154	P0513X152	MITER GAUGE ASSEMBLY
173	P0514X173	GUIDE POST HANDWHEEL
174	PCAP02M	CAP SCREW M6-1 X 20
175	PBHS22M	BUTTON HD CAP SCR M8-1.25 X 20
176	PLW04M	LOCK WASHER 8MM
177	PW01M	FLAT WASHER 8MM
178	PCAP11M	CAP SCREW M8-1.25 X 16
179	PBHS25M	BUTTON HD CAP SCR M10-1.5 X 20
180	P0514X180	RIGHT CLAMP PLATE
181	P0514X181	LEFT CLAMP PLATE





REF	PART #	DESCRIPTION
201	P0514X201	MODEL NUMBER LABEL
202	G8589	GRIZZLY LOGO PLATE
203	PLABEL-11	SAFETY GLASSES LABEL
204	PLABEL-20	OPEN DOOR LABEL
205	P0513X205	GUARD ADJ LABEL
206	PLABEL-12	READ MANUAL LABEL
207	PLABEL-14	ELECTRICITY LABEL
208	PLABEL-19	HANDS/BLADE LABEL

REF	PART #	DESCRIPTION
209	PLABEL-21	BS MOVING/ADJUST LABEL
210	PPAINT-1	GRIZZLY GREEN PAINT
212	PPAINT-11	PUTTY PAINT
213	PLABEL-18	DISCONNECT POWER LABEL
214	PLABEL-20	OPEN DOOR LABEL
215	P0513X214	TENSION ADJ LABEL
216	P0514X216	MACHINE ID LABEL

## **⚠️ WARNING**

Safety labels warn about machine hazards and ways to prevent injury. The owner of this machine **MUST** maintain the original location and readability of the labels on the machine. If any label is removed or becomes unreadable, **REPLACE** that label before using the machine again. Contact Grizzly at (800) 523-4777 or [www.grizzly.com](http://www.grizzly.com) to order new labels.

