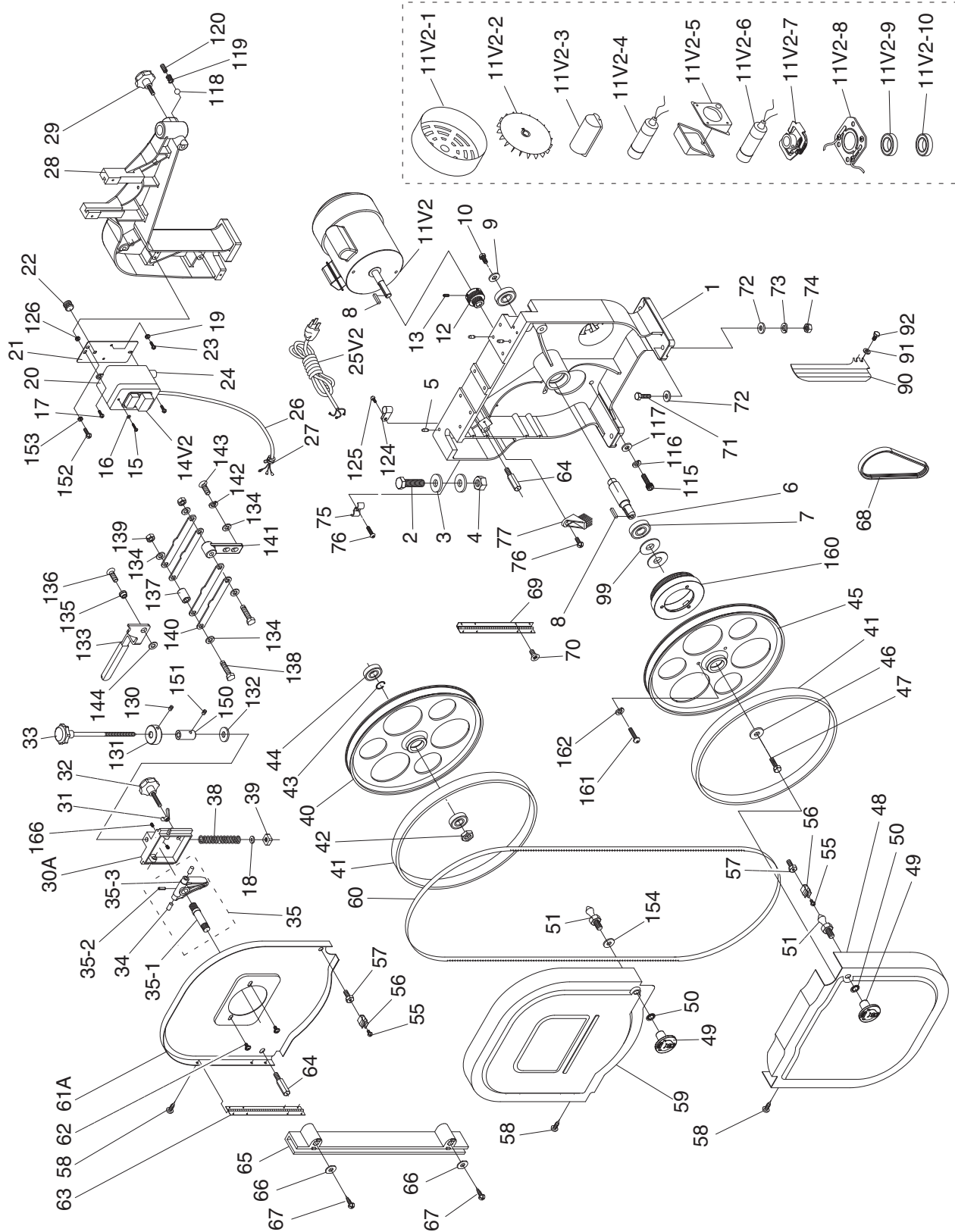


SECTION 9: PARTS

Main



Main Parts List

REF	PART #	DESCRIPTION
1	P0555X001	BASE
2	PB80M	HEX BOLT M16-2 X 55
3	PW08M	FLAT WASHER 16MM
4	PN13M	HEX NUT M16-2
5	P0555X005	ALIGNMENT PIN
6	P0555X006	LOWER WHEEL SHAFT
7	P6204LLU	BALL BEARING 6204LLU
8	PK23M	KEY 5 X 5 X 25
9	PWF08M	FENDER WASHER 8MM
10	PCAP11M	CAP SCREW M8-1.25 X 16
11V2	P0555X011V2	MOTOR 1.5HP 1PH 110/220V V2.05.11
11V2-1	P0555X011V2-1	MOTOR FAN COVER V2.05.11
11V2-2	P0555X011V2-2	MOTOR FAN V2.05.11
11V2-3	P0555X011V2-3	CAPACITOR COVER V2.05.11
11V2-4	P0555X011V2-4	S CAPACITOR 200M 125V V2.05.11
11V2-5	P0555X011V2-5	MOTOR JUNCTION BOX V2.05.11
11V2-6	P0555X011V2-6	R CAPACITOR 30M 250V V2.05.11
11V2-7	P0555X011V2-7	CENTRIFUGAL SWITCH V2.05.11
11V2-8	P0555X011V2-8	CONTACT PLATE V2.05.11
11V2-9	P6205ZZ	BALL BEARING 6205ZZ
11V2-10	P6203ZZ	BALL BEARING 6203ZZ
12	P0555X012	MOTOR PULLEY
13	PSS04M	SET SCREW M6-1 X 12
14V2	P0555014V2	ON/OFF SWITCH 110/220V V2.05.11
15	PHTEK1M	TAP SCREW M3.5 X 12
16	PW05M	FLAT WASHER 4MM
17	PS40M	PHLP HD SCR M5-.8 X 16
18	P0555X018	TENSION INDICATOR
19	PTLW02M	EXT TOOTH WASHER 5MM
20	P0555X020	SWITCH BOX
21	P0555X021	SWITCH BOX MOUNT PLATE
22	P0555X022	STRAIN RELIEF
23	PS19M	PHLP HD SCR M5-.8 X 6
24	P0555X024	STRAIN RELIEF
25V2	P0555X025V2	POWER CORD 14G 3C 6FT 5-15 V2.05.11
26	P0555X026	MOTOR CORD
27	P0555X027	STRAIN RELIEF
28	P0555X028	UPPER FRAME ARM
29	P0555X029	KNOB BOLT M10-1.5 X 30
30A	P0555X030A	UPPER WHEEL BRACKET V2.08.07
31	P7945097	WING NUT 8MM
32	P0555X032	KNOB BOLT M8-1.25 X 45
33	P0555X033	TENSION KNOB BOLT ASSEMBLY
34	P0555X035	STEEL PIN
35	P0555X035	UPPER WHEEL SHAFT HINGE ASSY
35-1	P0555X035	UPPER WHEEL SHAFT
35-2	PRP04M	ROLL PIN 4 X 24
35-3	P0555X035	UPPER WHEEL SHAFT HINGE
38	P0555X038	COMPRESSION SPRING
39	PSN04M	SQUARE NUT M10-1.5
40	P0555X040	UPPER WHEEL

REF	PART #	DESCRIPTION
41	P0555X041	WHEEL TIRE
42	PN09M	HEX NUT M12-1.75
43	PR21M	INT RETAINING RING 35MM
44	P6202LLU	BALL BEARING 6202LLU
45	P0555X045	LOWER WHEEL ASSEMBLY
46	PWF08M	FENDER WASHER 8MM
47	PB81M	HEX BOLT M8-1.25 X 20 LH
48	P0555X048	LOWER WHEEL GUARD
49	P0555X049	GRIZZLY ROUND KNOB M8-1.25
50	PTLW03M	INT TOOTH WASHER 8MM
51	P0555X051	LATCH STUD M8-1.25 X 14
55	PS08M	PHLP HD SCR M5-.8 X 12
56	P0555056	CATCH
57	P0555X057	ALIGNMENT BOLT
58	PHTEK4M	TAP SCREW M4 X 8
59	P0555X059	UPPER WHEEL COVER
60	P0555X060	SAW BLADE 6TPI 93-1/2 X 3/8" X .5MM
61A	P0555X061A	UPPER WHEEL BACK COVER V2.08.07
62	PFS01M	FLANGE SCREW M5-.8 X 8
63	P0555X063	UPPER WHEEL COVER HINGE
64	P0555X064	STANDOFF STUD
65	P0555X065	LEFT BLADE GUARD
66	P0555X066	TAP SCREW FLAT WASHER
67	PHTEK2M	TAP SCREW M3.5 X 16
68	P0555068	RIBBED V-BELT 200J5
69	P0555X069	LOWER WHEEL COVER HINGE
70	PFH07M	FLAT HD SCR M5-.8 X 10
71	PB20M	HEX BOLT M8-1.25 X 35
72	P0555X072	FLAT WASHER M8-1.25 X 18
73	PLW04M	LOCK WASHER 8MM
74	PN03M	HEX NUT M8-1.25
75	P0555X075	CORD CLAMP
76	PS05M	PHLP HD SCR M5-.8 X 8
77	P0555X077	WHEEL BRUSH
90	P0555X090	RIGHT UPPER BLADE GUARD
91	PW03M	FLAT WASHER 6MM
92	PB04M	HEX BOLT M6-1 X 10
99	P0555X099	PULLEY FLAT WASHER
115	PCAP31M	CAP SCREW M8-1.25 X 25
116	PLW04M	LOCK WASHER 8MM
117	PWF08M	FENDER WASHER 8MM
118	P0555X118	STEEL BALL
119	P0555X119	COMPRESSION SPRING
120	PSS30M	SET SCREW M10-1.5 X 10
124	P0555X124	CORD CLAMP
125	PS05M	PHLP HD SCR M5-.8 X 8
126	PLN01M	LOCK NUT M4-.7
130	PSS05M	SET SCREW M5-.8 X 10
131	P0555X131	UPPER LOCK COLLAR
132	PW04M	FLAT WASHER 10MM
133	P0555X133	TENSION LEVER



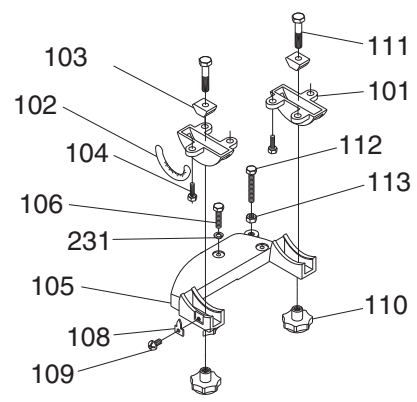
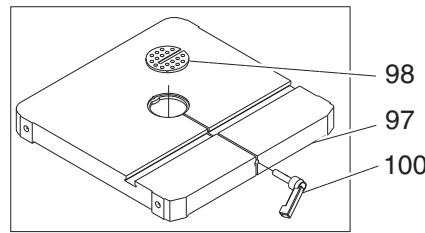
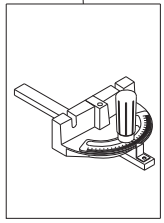
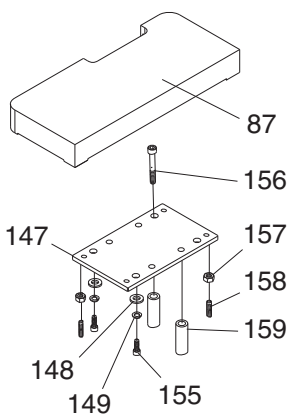
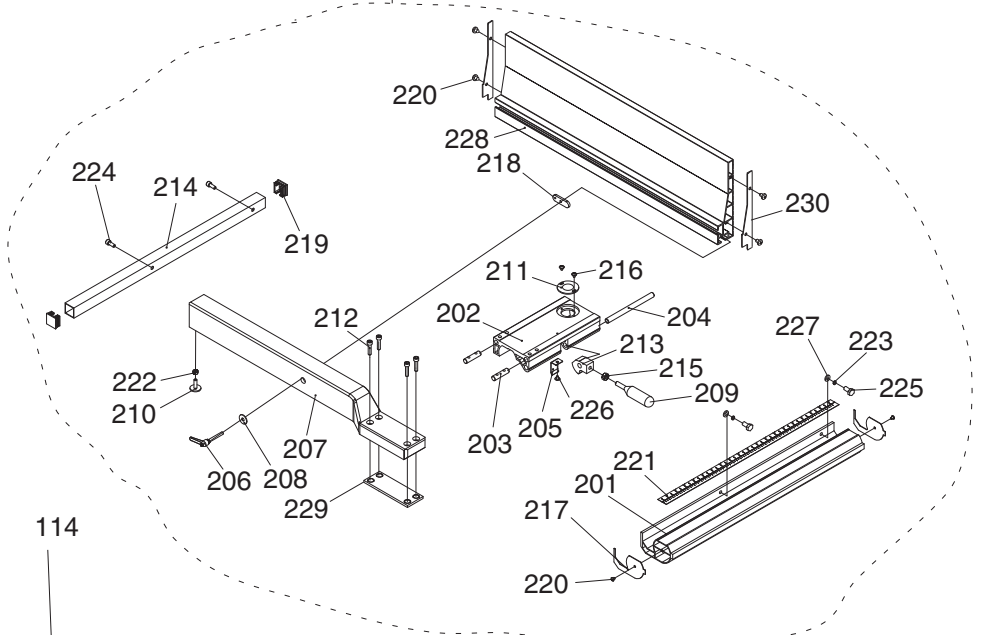
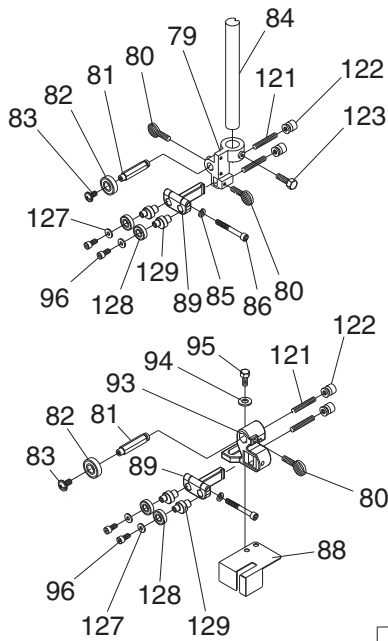
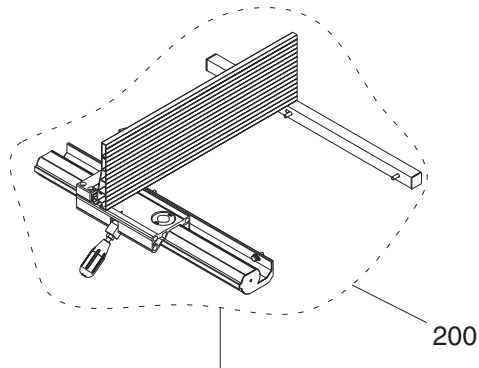
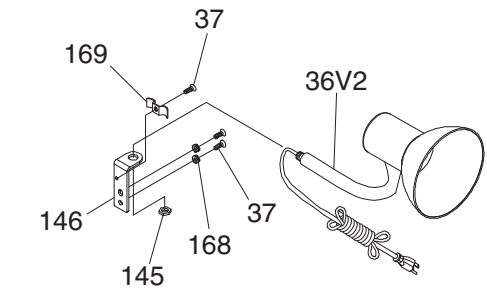
Main Parts List (continued)

REF	PART #	DESCRIPTION
134	PW01M	FLAT WASHER 8MM
135	P0555X135	BUSHING
136	PBHS01M	BUTTON HD CAP SCR M8-1.25 X 20
137	P0555X137	SPACER
138	PB15M	HEX BOLT M8-1.25 X 40
139	PLN04M	LOCK NUT M8-1.25
140	P0555X140	SUPPORT PLATE
141	P0555141	PIVOT ARM
142	PLW04M	LOCK WASHER 8MM
143	PCAP14M	CAP SCREW M8-1.25 X 20

REF	PART #	DESCRIPTION
144	P0555X144	SPACER 8 X 20MM
150	P0555X150	LOWER LOCK COLLAR
151	PSS07M	SET SCREW M5-.8 X 5
153	PTLW02M	EXT TOOTH WASHER 5MM
154	PW01M	FLAT WASHER 8MM
160	P0555X160	WHEEL PULLEY
161	PBHS21	BUTTON HD CAP SCR 5/16-18 X 3/4
162	PLW03M	LOCK WASHER 6MM
166	PSS31M	SET SCREW M5-.8 X 8



Table, Fence & Guides



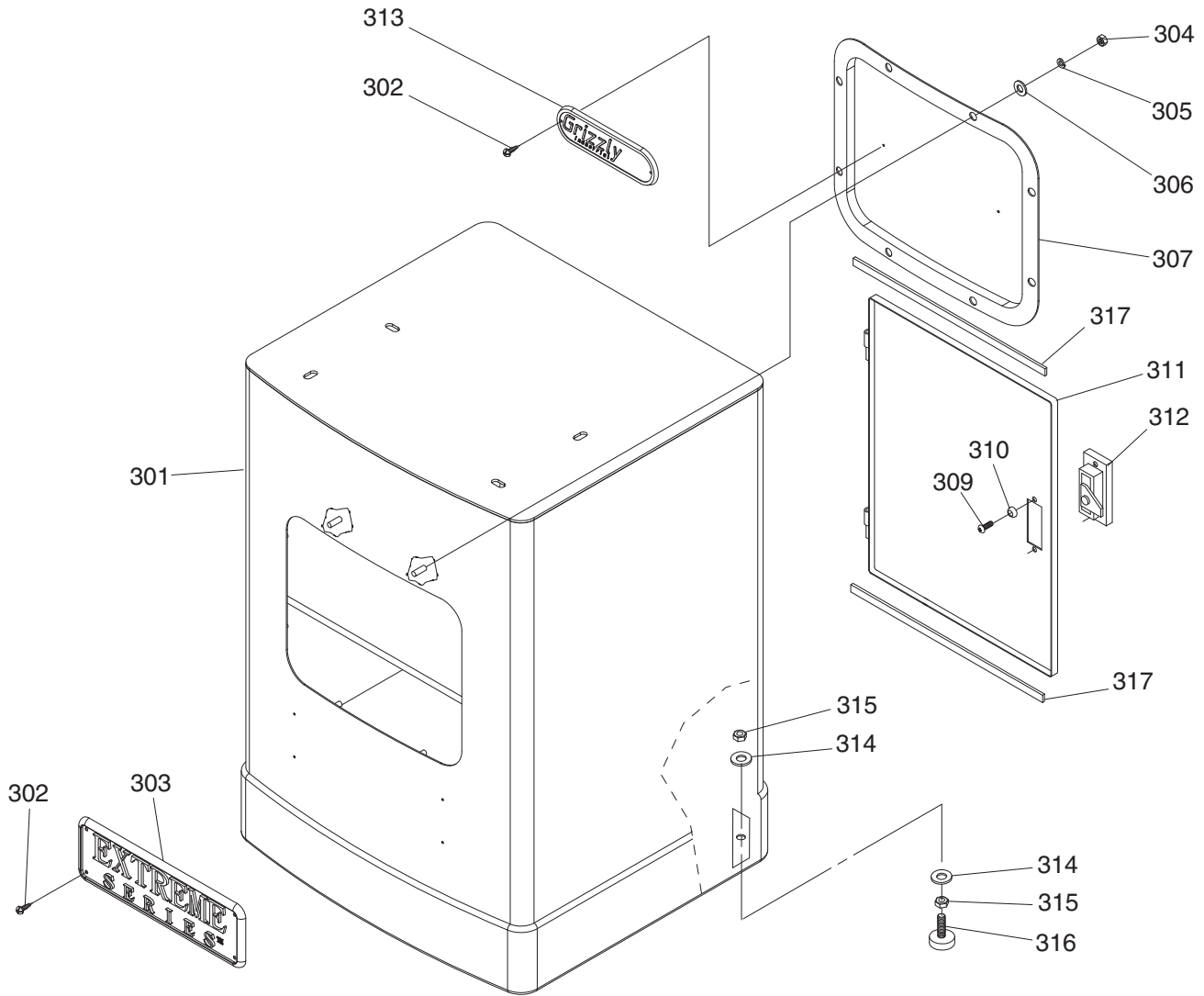
Table, Fence & Guides Parts List

REF	PART #	DESCRIPTION
36V2	P0555X036V2	LAMP ASSY W/POWER CORD V2.04.12
37	PFS01M	FLANGE SCREW M5-.8 X 8
79	P0555079	UPPER BLADE GUIDE BRACKET
80	PTS001M	THUMB SCREW M6-1 X 16
81	P0555X081	GUIDE SUPPORT SHAFT
82	P6000ZZ	BALL BEARING 6000ZZ
83	PFS06M	FLANGE SCREW M6-1 X 8
84	P0555X084	GUIDE POST
85	PLW01M	LOCK WASHER 5MM
86	PCAP78M	CAP SCREW M5-.8 X 40
87	P0555X087	TABLE EXTENSION
88	P0555088	LOWER RIGHT BLADE GUARD
89	P0555089	GUIDE BEARING SUPPORT BRACKET
93	P0555X093	LOWER BLADE GUIDE BRACKET
94	PW03M	FLAT WASHER 6MM
95	PB08M	HEX BOLT M6-1 X 20
96	PCAP33M	CAP SCREW M5-.8 X 12
97	P0555X097	TABLE
98	P0513X127	TABLE INSERT
100	P0555X100	TABLE PIN
101	P0555X101	TRUNNION
102	P0555102	SCALE
103	P0555X103	TRUNNION CLAMP SHOE
104	PB02M	HEX BOLT M6-1 X 12
105	P0555X105	TRUNNION SUPPORT BRACKET
106	PB26M	HEX BOLT M8-1.25 X 30
108	P0555X108	POINTER
109	PFS03M	FLANGE SCREW M5-.8 X 6
110	P0555X110	KNOB 10MM
111	PB73M	HEX BOLT M10-1.5 X 50
112	PB82M	HEX BOLT M8-1.25 X 80
113	PN03M	HEX NUT M8-1.25
114	P0555X114	MITER GAUGE BODY ASSEMBLY
121	PSS98M	SET SCREW M8-1 X 35
122	P0555X122	MICRO ADJUSTING NUT
123	PB08M	HEX BOLT M6-1 X 20
127	PW02M	FLAT WASHER 5MM
128	G3845	BALL BEARING 6000ZZ
129	P0555129	ECCENTRIC BEARING SHAFT
145	P0555X036	LAMP NUT
146	P0555X036	LAMP BRACKET
147	P0555X147	LEVER BOARD

REF	PART #	DESCRIPTION
148	PW03M	FLAT WASHER 6MM
149	PLW03M	LOCK WASHER 6MM
155	PCAP06M	CAP SCREW M6-1 X 25
156	PCAP35M	CAP SCREW M8-1.25 x 60
157	PN03M	HEX NUT M8-1.25
158	PSS09M	SET SCREW M8-1.25 X 20
159	P0555X159	SPACER
168	PTLW02M	EXT TOOTH WASHER 5MM
169	P0555X169	CORD CLAMP
200	P0555X200	FENCE KIT ASSEMBLY
201	P0555X201	FRONT FENCE RAIL
202	P0555X202	FENCE BASE
203	P0555X203	FENCE MOUNTING SHAFT
204	P0555X204	LOCK ROD
205	P0555X205	SPRING PIECE
206	P0555X206	LOCK KNOB M8-1.25 X 44
207	P0555X207	FENCE BRACKET
208	PW01M	FLAT WASHER 8MM
209	P0555X209	LOCK HANDLE
210	P0555X210	FENCE STAND-OFF
211	P0555X211	SCALE WINDOW
212	PCAP06M	CAP SCREW M6-1 X 25
213	P0555X213	LOCK CAM
214	P0555X214	REAR FENCE RAIL
215	PN03M	HEX NUT M8-1.25
216	PFS04M	FLANGE SCREW M4-.7 X 6
217	P0555317	FRONT RAIL END CAP
218	P0555X218	FENCE MOUNTING KEY
219	P0555319	REAR RAIL END CAP
220	PHTEK3M	TAP SCREW M3.5 X 8
221	P0555X221	SCALE
222	PN01M	HEX NUT M6-1
223	PLW03M	LOCK WASHER 6MM
224	PCAP01M	CAP SCREW M6-1 X 16
225	PB08M	HEX BOLT M6-1 X 20
226	PFS17M	FLANGE SCREW M4-.7 X 8
227	PW03M	FLAT WASHER 6MM
228	P0555X228	FENCE
229	P0555X229	FENCE BRACKET MOUNTING PLATE
230	P0555X230	FENCE END CAP
231	PLW04M	LOCK WASHER 8MM



Stand

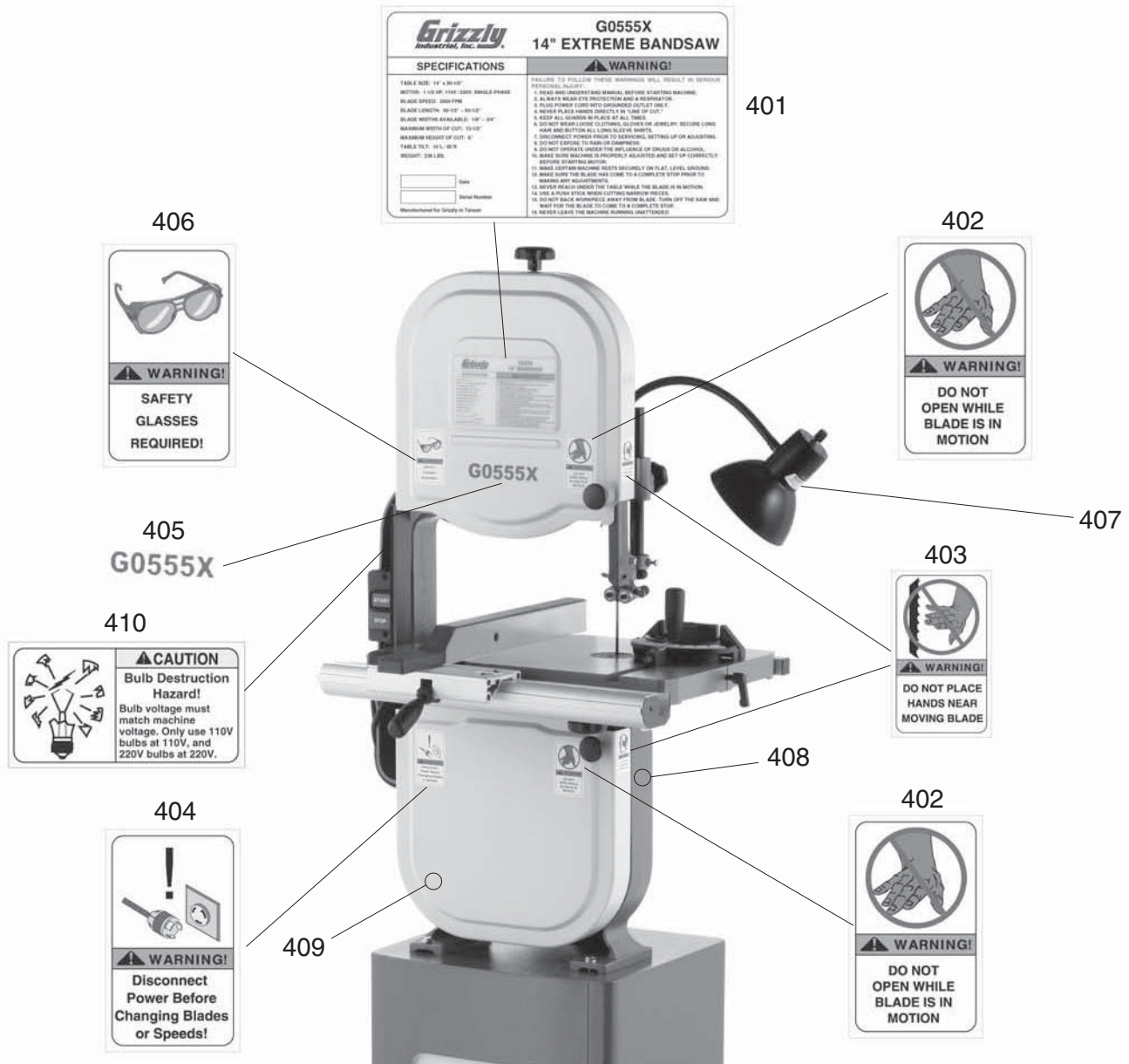


REF	PART #	DESCRIPTION
301	P0555X301	STAND
302	PHTEK3M	TAP SCREW M3.5 X 8
303	H7942	EXTREME SERIES LOGO
304	PN01M	HEX NUT M6-1
305	PLW03M	LOCK WASHER 6MM
306	PW03M	FLAT WASHER 6MM
307	P0555X307	FRONT STAND PANEL
309	PS17M	PHLP HD SCR M4-.7 X 6

REF	PART #	DESCRIPTION
310	PW05M	FLAT WASHER 4MM
311	P0555X311	DOOR
312	P0555X312	DOOR LATCH ASSEMBLY
313	P0555X313	GRIZZLY LOGO PLATE
314	PW04M	FLAT WASHER 10MM
315	PN08	HEX NUT 3/8-16
316	P0555X316	STAND FOOT
317	P0555X317	DOOR CUSHION



Labels



REF	PART #	DESCRIPTION
401	P0555X401	MACHINE ID LABEL
402	PLABEL-20	DONT OPEN DOOR LABEL
403	PLABEL-19	BANDSAW BLADE LABEL
404	PLABEL-18	UNPLUG BANDSAW LABEL
405	P0555X405	MODEL NUMBER LABEL

REF	PART #	DESCRIPTION
406	PLABEL-11	SAFETY GLASSES LABEL
407	P0555X407	LAMP WARNING LABEL
408	PPAINT-1	GRIZZLY GREEN TOUCH-UP PAINT
409	PPAINT-14	GRIZZLY PUTTY TOUCH-UP PAINT
410	P0555X410	BULB DESTRUCTION LABEL

⚠ WARNING

Safety labels help reduce the risk of serious injury caused by machine hazards. If any label comes off or becomes unreadable, the owner of this machine **MUST** replace it in the original location before resuming operations. For replacements, contact (800) 523-4777 or www.grizzly.com.

