

Table Breakdown

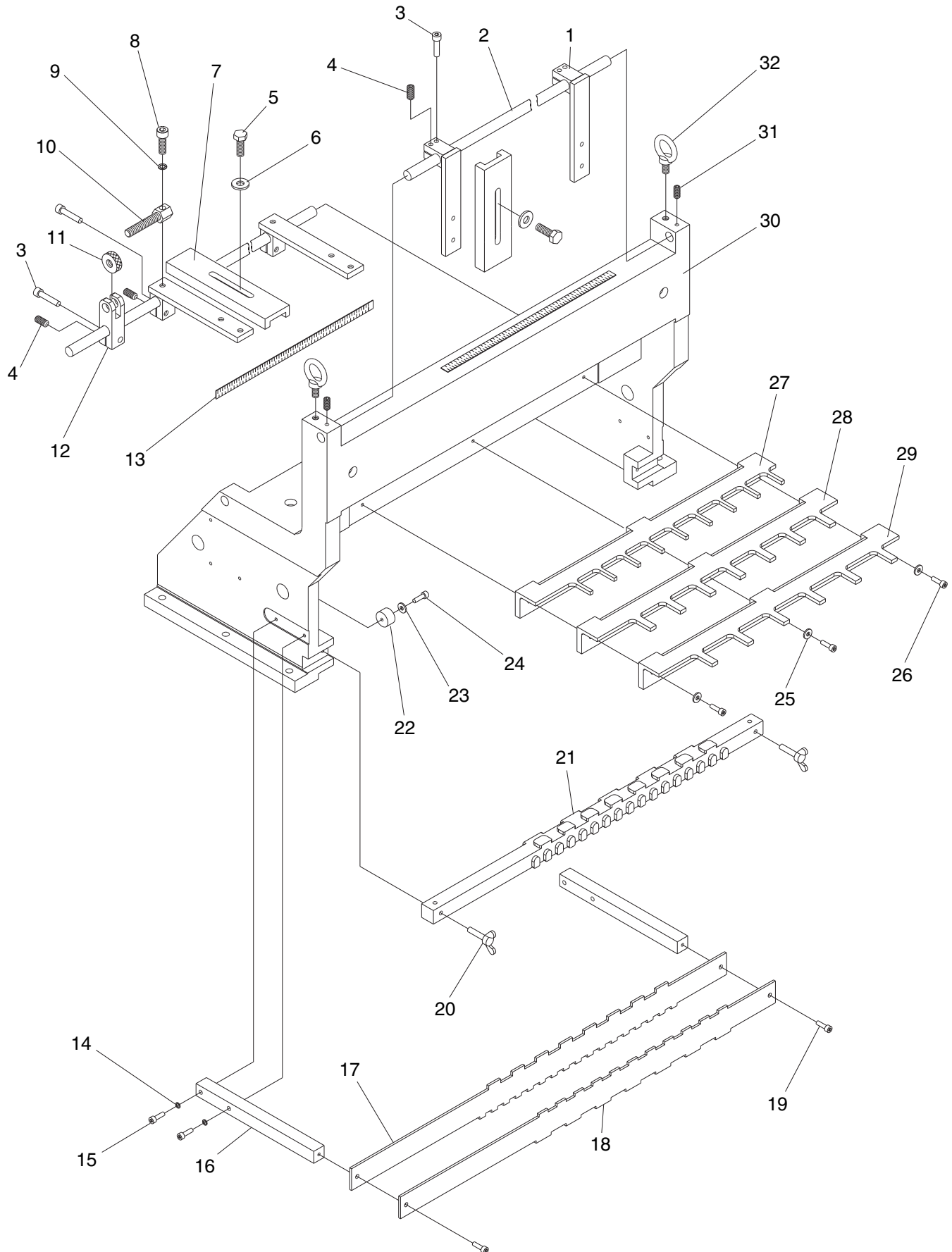


Table Parts List

REF	PART #	DESCRIPTION
1	P0611X001	FENCE
2	P0611X002	SLIDING ROD
3	PSB31M	CAP SCREW M8-1.25 X 25
4	PSS04M	SET SCREW M6-1 X 12
5	PB09M	HEX BOLT M8-1.25 X 20
6	PW01M	FLAT WASHER 8MM
7	P0611X007	BUFFER PAD
8	PSB13M	CAP SCREW M8-1.25 X 30
9	PLW04M	LOCK WASHER 8MM
10	P0611X010	ADJUSTMENT SCREW
11	P0611X011	ADJUSTMENT NUT
12	P0611X012	ADJUSTMENT SCREW SEAT
13	P0611X013	TABLE SCALE
14	PLW03M	LOCK WASHER 6MM
15	PSB48M	CAP SCREW M6-1 X 35
16	P0611X016	INDICATOR MOUNTING BAR

REF	PART #	DESCRIPTION
17	P0611X017	INDICATOR TEMPLATE 1" & 2"
18	P0611X018	INDICATOR TEMPLATE 1-1/2" & 2-1/2"
19	PSB04M	CAP SCREW M6-1 X 10
20	P0611X020	WING SCREW M6-1 X 35
21	P0611X021	TEMPLATE
22	P0611X022	BUFFER PAD
23	PW03M	FLAT WASHER 6MM
24	PSB02M	CAP SCREW M6-1 X 20
25	PW03M	FLAT WASHER 6MM
26	PSB07M	CAP SCREW M6-1 X 30
27	P0611X027	FIXED CHASER 1" & 2"
28	P0611X028	FIXED CHASER 1-1/2"
29	P0611X029	FIXED CHASER 2-1/2"
30	P0611X030	WORKTABLE
31	PSS02M	SET SCREW M6-1 X 6
32	P0611X032	EYE BOLT M10-1.5 X 15



Headstock Parts List

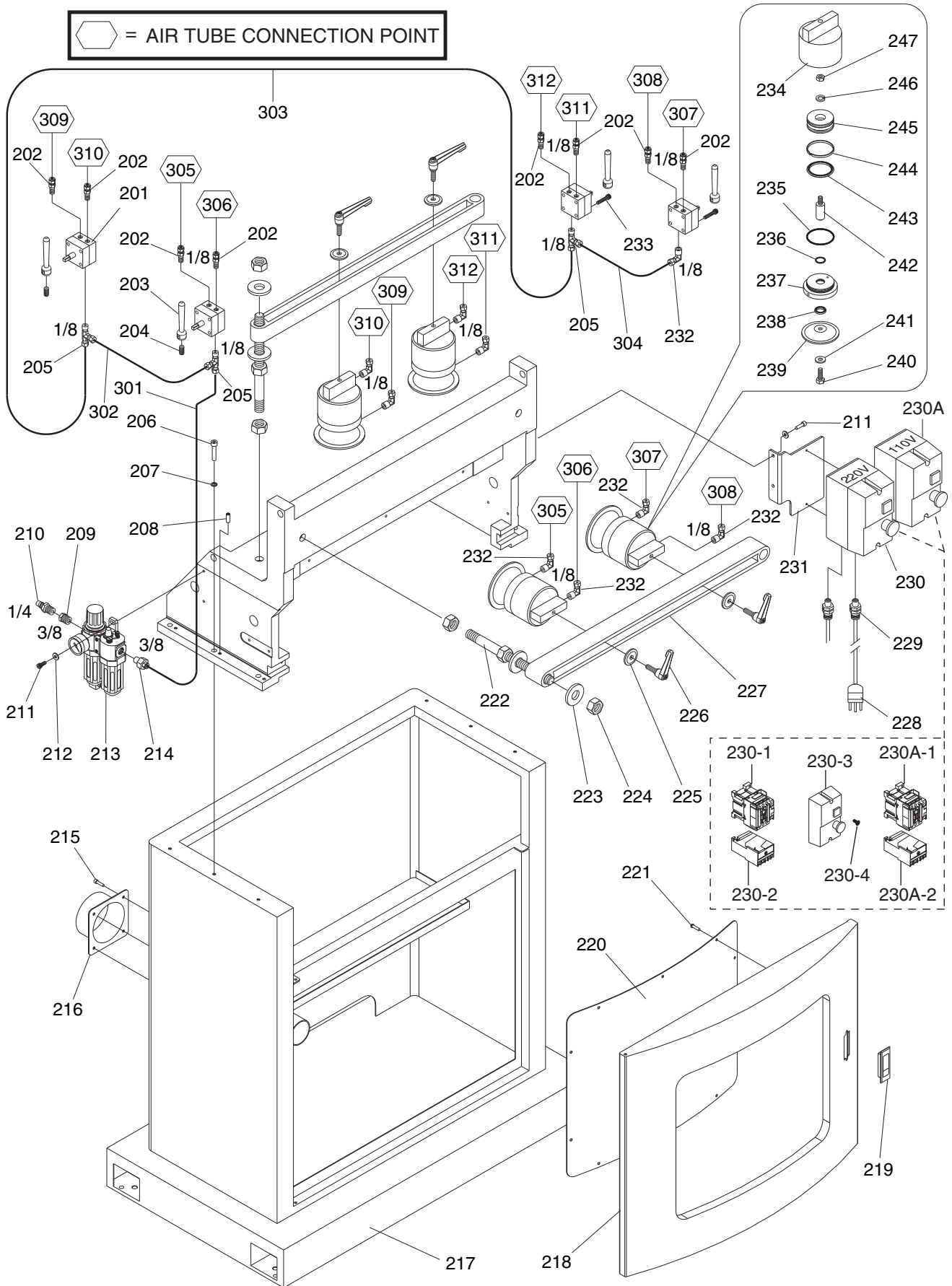
REF	PART #	DESCRIPTION
101	P0611X101	SPONGE COATING
102	P0611X102	HANDLE
103	PN02M	HEX NUT M10-1.5
104	PZERK2	GREASE FITTING M6-1 x 5
105	P0611X105	CUTTER
106	PW04M	FLAT WASHER 10MM
107	PB13M	HEX BOLT M10-1.5 X 80
108	P0611X108	SPINDLE SLIDE SEAT
109	PW01M	FLAT WASHER 8MM
110	P0611X110	CAP SCREW M8-1.25 X 100
111	PSS16M	SET SCREW M8-1.25 X 10
112	P0611X112	ECCENTRIC SPINDLE
113	P0611X113	LOCK NUT
114	P0611X114	SPINDLE BEARING HOUSING
114A	P0611X114A	COMPLETE SPINDLE ASSY
115	P0611X115	SPACER
116	PSS07M	SET SCREW M5-.8 X 5
117	P0611X117	COMPRESSION SPRING AK-6005
118	P6005	BALL BEARING 6005
119	P0611X119	FIXING NUT
120	PN06M	HEX NUT M5-.8
121	PSB79M	CAP SCREW M5-.8 X 35
122	PSB15M	CAP SCREW M5-.8 X 20
123	P0611X123	EXTENSION SPRING
124	P0611X124	FLAT BELT 670 X 25
125	PB08M	HEX BOLT M6-1 X 20
126	PW03M	FLAT WASHER 6MM
127	P0611X127	MOTOR PULLEY
128	P0611X128	MOTOR BRACKET
129	P0611X129	MOTOR 1HP, 110V/220V
129-1	P0611X129-1	MOTOR FAN COVER
129-2	P0611X129-2	MOTOR FAN
129-3	P0611X129-3	MOTOR JUNCTION BOX
129-4	P0611X129-4	S CAPACITOR 300MFD 250VAC
129-5	P0611X129-5	R CAPACITOR 30MFD 250VAC
130	P0611X130	STRAIN RELIEF 11-10B
130-1	P0611X130-1	MOTOR CORD

REF	PART #	DESCRIPTION
131	P0611X131	CARRIAGE
132	P0611X132	GUIDE ROD M25 X 750L
133	P0611X133	LINEAR BUSHING 16UU
134	P0611X134	SEAL 16 X 28 X 7 X 3
135	PR20M	INT RETAINING RING 28MM
136	P0611X136	GUIDE ROD M16 X 459L
137	P0611X137	LINEAR BUSHING 25UU
138	P0611X138	SEAL 25 X 40 X 7 X 2
139	PR23M	INT RETAINING RING 40MM
140	P0611X140	FLEXIBLE HOSE 2.5" X 63"
141	P0611X141	HOSE CLAMP 2-3/4"
142	PSB40M	CAP SCREW M8-1.25 X 35
143	P0611X143	TRACER PIN
144	PSS53M	SET SCREW M5-.8 X 12
145	P0611X145	WING SCREW M6-1 X 20
146	P0611X146	ADJUSTMENT SCREW
147	P0611X147	PLASTIC PLUG 22MM
148	PB03M	HEX BOLT M8-1.25 X 16
149	P0611X149	HEX BOLT M10-1.5 X 150
150	P0611X150	CLAMP BUSHING
151	PSB66M	CAP SCREW M8-1.25 X 65
152	P0611X152	BUSHING
153	P0611X153	GEAR SHAFT
154	P0611X154	INDICATOR BAR
155	P0611X155	INDICATOR BRACKET
156	PW05M	FLAT WASHER 4MM
157	PSB17M	CAP SCREW M4-.7 X 10
158	PSB33M	CAP SCREW M5-.8 X 12
159	PW02M	FLAT WASHER 5MM
160	P0611X160	GUARD
160-1	P0611X160-1	TOP GUARD BRUSH
160-2	P0611X160-2	SIDE GUARD BRUSH
161	P0611X161	WINDOW
162	PS17M	PHLP HD SCR M4-.7 X 6
163	P0611X163	CONTROL PANEL LABEL
164	P0611X164	WING SCREW M5-.8 X 15



Body & Pneumatic Breakdown

 = AIR TUBE CONNECTION POINT



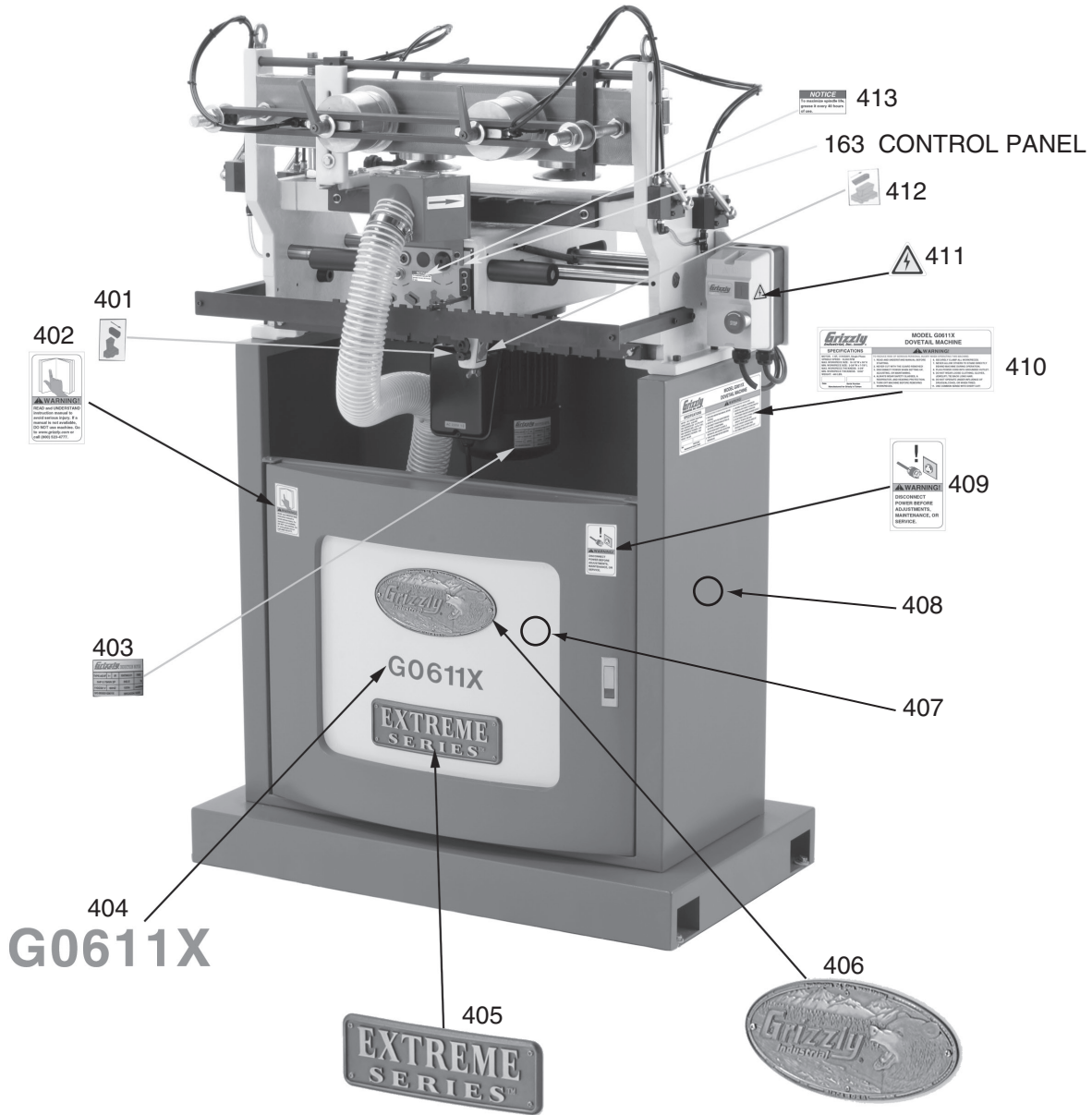
Body & Pneumatic Parts List

REF	PART #	DESCRIPTION
201	P0611X201	CONTROL VALVE
202	P0611X202	MALE CONNECTOR PT-1/8" X 6MM
203	P0611X203	HANDLE
204	PSS07M	SET SCREW M5-.8 X 5
205	P0611X205	T-CONNECTOR PT-1/8" X 6MM X 6MM
206	PSB40M	CAP SCREW M8-1.25 X 35
207	PLW04M	LOCK WASHER 8MM
208	PSS16M	SET SCREW M8-1.25 X 10
209	P0611X209	ADAPTER 3/8" X 1/4"
210	P0611X210	MALE COUPLING PT-1/4"
211	PSB01M	CAP SCREW M6-1 X 16
212	PW03M	FLAT WASHER 6MM
213	P0611X213	AIR SUPPLY UNIT MACP 300-10A
214	P0611X214	MALE CONNECTOR PT-3/8" X 6MM
215	PSB50M	CAP SCREW M5-.8 X 10
216	P0611X216	DUST PORT 4"
217	P0611X217	CABINET
218	P0611X218	DOOR
219	P0611X219	DOOR LATCH
220	P0611X220	DOOR INSET
221	PS19M	PHLP HD SCR M5-.8 X 6
222	P0611X222	STUD
223	PW13M	FLAT WASHER 20MM
224	PN28M	HEX NUT M20-2.5
225	P0611X225	SPECIAL WASHER
226	P0611X226	LOCKING HANDLE M10-1.5 X 35
227	P0611X227	HOLDER BRACKET
228	P0611X228	POWER CORD
229	P0611X229	STRAIN RELIEF MGB20G-12B
230	P0611X230	MAGNETIC SWITCH ASSY 220V
230A	P0611X230A	MAGNETIC SWITCH ASSY 110V
230-1	P0611X230-1	CONTACTOR 220V
230-2	P0611X230-2	OVERLOAD RELAY FOR 220V

REF	PART #	DESCRIPTION
230-3	P0611X230-3	MAG SWITCH COVER
230-4	P0611X230-4	PLASTIC SCREW
230A-1	P0611X230A-1	CONTACTOR 110V
230A-2	P0611X230A-2	OVERLOAD RELAY FOR 110V
231	P0611X231	SWITCH BRACKET
232	P0611X232	MALE ELBOW PT1/8" X 6MM
233	PSB109M	CAP SCREW M5-.8 X 50
234	P0611X234	CYLINDER BODY
235	P0611X235	O-RING G80
236	P0611X236	O-RING P25
237	P0611X237	CYLINDER END COVER
238	P0611X238	LOCKING PIECE
239	P0611X239	CLAMPING DISC
240	PB03M	HEX BOLT M8-1.25 X 16
241	PW01M	FLAT WASHER 8MM
242	P0611X242	PISTON ROD
243	P0611X243	PISTON BACKING 80 X 65 X 5.5
244	P0611X244	WEARING 80 X 75 X 6
245	P0611X245	PISTON
246	PLW05M	LOCK WASHER 12MM
247	PN09M	HEX NUT M12-1.75
301	P0611X301	PU TUBE 4 X 6 X 240MM
302	P0611X302	PU TUBE 4 X 6 X 140MM
303	P0611X303	PU TUBE 4 X 6 X 1360MM
304	P0611X304	PU TUBE 4 X 6 X 140MM
305	P0611X305	PU TUBE 4 X 6 X 790MM
306	P0611X306	PU TUBE 4 X 6 X 730MM
307	P0611X307	PU TUBE 4 X 6 X 790MM
308	P0611X308	PU TUBE 4 X 6 X 730MM
309	P0611X309	PU TUBE 4 X 6 X 790MM
310	P0611X310	PU TUBE 4 X 6 X 730MM
311	P0611X311	PU TUBE 4 X 6 X 790MM
312	P0611X312	PU TUBE 4 X 6 X 730MM



Labels Breakdown



REF	PART #	DESCRIPTION
163	P0611X163	CONTROL PANEL LABEL
401	P0611X401	TAIL SHORTER LABEL
402	PLABEL-12A	READ MANUAL LABEL
403	P0611X403	MOTOR LABEL
404	P0611X404	G0611X MODEL # LABEL
405	P0611X405	EXTREME SERIES PLATE
406	G8589	GRIZZLY LOGO PLATE

REF	PART #	DESCRIPTION
407	PPAINT-14	"PUTTY" TOUCH-UP PAINT
408	PPAINT-1	"GRIZZLY GREEN" TOUCH-UP PAINT
409	PLABEL-36	DISCONNECT POWER LABEL
410	P0611X410	MACHINE ID LABEL
411	PLABEL-14	ELECTRICITY LABEL
412	P0611X412	TAIL LONGER LABEL
413	P0611X413	GREASE SPINDLE LABEL

WARNING

Safety labels warn about machine hazards and ways to prevent injury. The owner of this machine **MUST** maintain the original location and readability of the labels on the machine. If any label is removed or becomes unreadable, **REPLACE** that label before using the machine again. Contact Grizzly at (800) 523-4777 or www.grizzly.com to order new labels.

