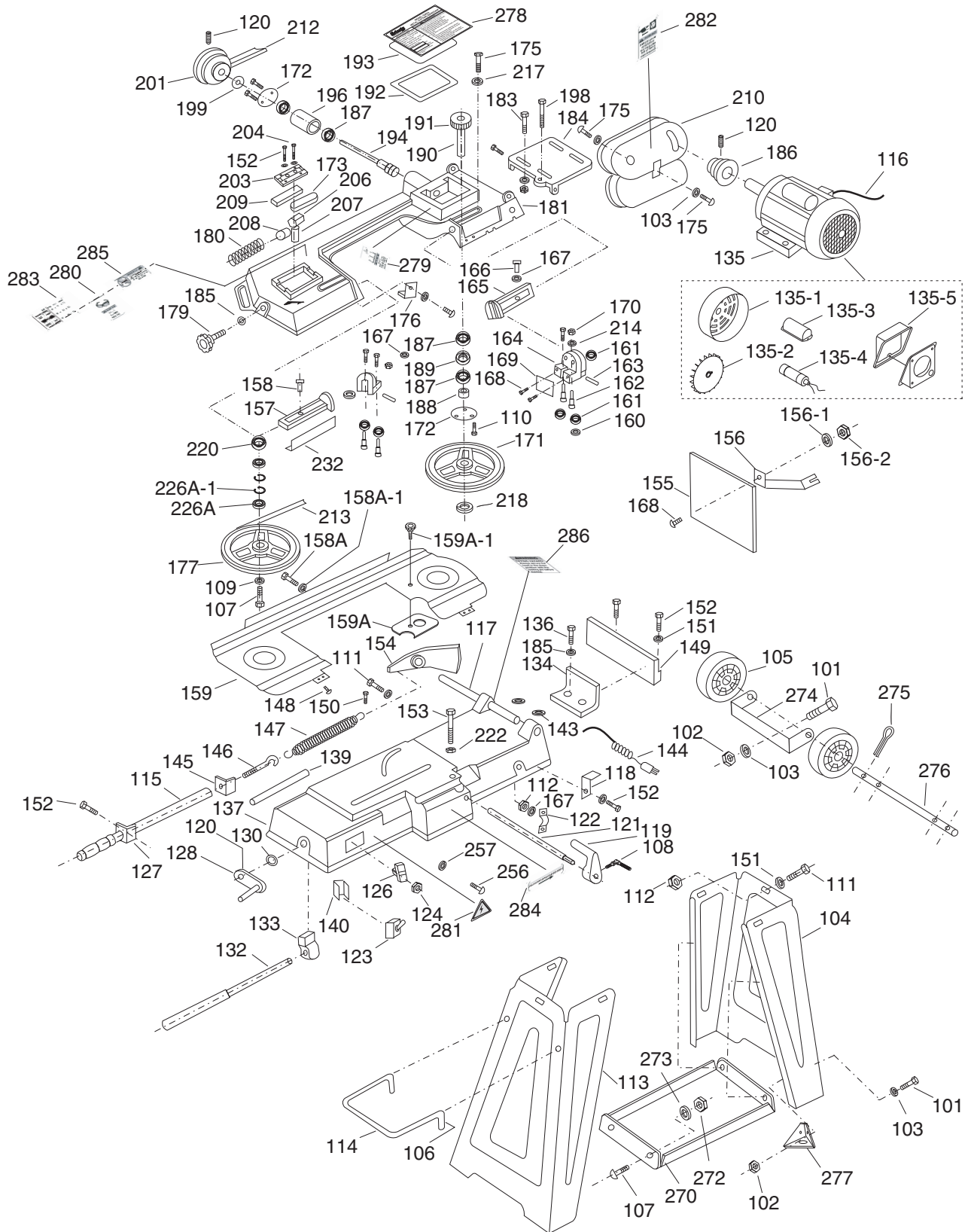


SECTION 9: Parts



Parts List

REF	PART #	DESCRIPTION
101	PB02M	HEX BOLT M6-1 X 12
102	PN01M	HEX NUT M6-1
103	PW03M	FLAT WASHER 6MM
104	P0622104	STAND LEG (RIGHT)
105	P0622105	WHEEL ASSY
106	P0622106	COTTER PIN
107	PS14M	PHLP HD SCR M6-1 X 12
108	P0622108	LOCKING LEVER
109	PW03M	FLAT WASHER 6MM
110	PFH19M	FLAT HD SCR M4-.7 X 10
111	PB20M	HEX BOLT M8-1.5 X 35
112	PN03M	HEX NUT M8-1.5
113	P0622113	STAND LEG (LEFT)
114	P0622114	TRANSPORT HANDLE
115	P0622115	ADJUSTING ROD
116	P0622116	MOTOR CORD
117	P0622117	PIVOTING ROD
118	P0622118	SUPPORT PLATE
119	P0622119	WORK STOP
120	PSS04M	SET SCREW M6-1 X 12
121	P0622121	STOCK STOP ROD
122	P0622122	WIRE RELIEF RETAINER
123	P0622123	SWITCH
124	PN06M	HEX NUT M5-.8
126	P0622126	SWITCH PANEL
127	P0622127	ADJUSTING ROD SUPPORT
128	P0622128	HAND WHEEL
130	PR47M	EXT RETAINING RING 13MM
132	P0622132	LEAD SCREW
133	P0622133	WISE NUT
134	P0622134	FRONT VISE JAW
135	P0622135	MOTOR 3/4HP 110V 1PH
135-1	P0622135-1	MOTOR COVER
135-2	P0622135-2	FAN
135-3	P0622135-3	CAPACITOR COVER
135-4	P0622135-4	CAPACITOR 35MFD 250VAC
135-5	P0622135-5	JUNCTION BOX
136	PB01M	HEX BOLT M10-1.5 X 30
137	P0622137	BED
139	P0622139	SCALE
140	P0622140	ELECTRIC CORD COVER
143	P0622143	GASKET
144	P0622144	POWER CORD
145	P0622145	NUT PLATE
146	P0622146	SPRING ADJUSTING SCREW
147	P0622147	EXTENSION SPRING
148	PS38M	PHLP HD SCR M4-.7 X 10
149	P0622149	REAR VISE JAW
150	PSS14M	SET SCREW M8-1.25 X 12
151	PW01M	FLAT WASHER 8MM

REF	PART #	DESCRIPTION
152	PB07M	HEX BOLT M8-1.25 X 25
153	PB43M	HEX BOLT M12-1.75 X 75
154	P0622154	PIVOT
155	P0622155	TABLE
156	P0622156	TABLE BRACKET
156-1	PWF06M	FENDER WASHER 6MM
156-2	PN01M	HEX NUT M6-1
157	P0622157	ADJUSTABLE BRACKET (TOP)
158A	PS09M	PHLP HD SCR M5-.8 X 10
158A-	PW02M	FLAT WASHER 5MM
159A	P0622159A	BLADE BACK SAFETY COVER
159A-	P0622159A-1	KNOB M6-1 X 8
160	PR39M	EXT RETAINING RING 8MM
161	P629ZZ	BALL BEARING 629ZZ
162	P0622162	GUIDE PIVOT
163	P0622163	BEARING SHAFT PIN 8X40MM
164	P0622164	BLADE ADJUSTABLE SEAT
165	P0622165	ADJUSTABLE BRACKET
165-1	PWF06M	FENDER WASHER 6MM
165-2	PN01M	HEX NUT M6-1
166	P0622166	GUIDE BEARING LOCK
167	PLW04M	LOCK WASHER 8MM
168	PFH02M	FLAT HD SCR M6-1 X 12
169	P0622169	BLADE GUARD
170	PN03M	HEX NUT M8-1.25
171	P0622171	BLADE WHEEL (FRONT)
172	P0622172	BLADE WHEEL BEARING COVER
173	PK12M	KEY 5 X 5 X 30
175	PS14M	PHLP HD SCR M6-1 X 12
176	P0622176	SWITCH CUT OFF TIP
177	P0622177	BLADE WHEEL (REAR)
179	P0622179	BLADE TENSION KNOB
180	P0622180	COMPRESSION SPRING
181	P0622181	BODY FRAME
183	PB07M	HEX BOLT M8-1.25 X 25
184	P0622184	MOTOR MOUNT PLATE
185	PW04M	FLAT WASHER 10MM
186	P0622186	MOTOR PULLEY
187	P620ZZ	BALL BEARING 620ZZ
188	P0622188	BEARING BUSHING
189	P0622189	OIL SEAL
190	P0622190	TRANSMISSION WHEEL SHAFT
191	P0622191	TRANSMISSION GEAR
192	P0622192	GEAR BOX GASKET
193	P0622193	GEAR BOX COVER
194	P0622194	WORM GEAR
196	P0622196	BEARING BUSHING
198	PB166M	HEX BOLT M8-1.25 X 50
199	P0622199	BUSHING
201	P0622201	WORM GEAR PULLEY



Parts List

REF	PART #	DESCRIPTION
203	P0622203	BLADE TENSION PLATE
204	PB20M	HEX BOLT M8-1.25 X 35
206	P0622206	SLIDING PLATE DRAW BLOCK
207	P0622207	BLADE WHEEL SHAFT
208	P0622208	SHAFT BLOCK
209	P0622209	BLADE TENSION SLIDING GUIDES
210	P0622210	MOTOR PULLEY COVER
212	P0622212	V-BELT O-508
213	P0622213	BLADE 1/2 X .028 X 64 1/2
214	PW01M	FLAT WASHER 8MM
218	PR05M	EXT RETAINING RING 15MM
220	P6202ZZ	BALL BEARING 6202ZZ
222	PN09M	HEX NUT M12-1.75
226A	P6202ZZ	BALL BEARING 6202ZZ
226A-	PR21M	INT RETAINING RING 35MM
232	P0622232	BLADE SAFE GUARD
256	PS22M	PHLP HD SCR M5-.8 X 25

REF	PART #	DESCRIPTION
257	PLW01M	LOCK WASHER 5MM
270	P0622270	TOOL PLATE
272	PN01M	HEX NUT M6-1
273	PW03M	FLAT WASHER 6MM
274	P0622274	WHEEL STAND
275	P0622275	COTTER PIN
276	P0622276	AXLE
277	P0622277	CORNER BRACKET
278	P0622278	MACHINE ID LABEL
279	P0622279	READ MANUAL LABEL
280	P0622280	SAFETY GLASSES LABEL
281	PLABEL-14	ELECTRICITY LABEL
282	P0622282	UNPLUG MACHINE LABEL
283	P0622283	RPM LABEL
284	P0622284	BLADE TRAVEL LABEL
285	P0622285	BLADE SAFETY LABEL
286	P0622286	TIPPING HAZARD LABEL

WARNING

Safety labels warn about machine hazards and ways to prevent injury. The owner of this machine **MUST** maintain the original location and readability of the labels on the machine. If any label is removed or becomes unreadable, **REPLACE** that label before using the machine again. Contact Grizzly at (800) 523-4777 or www.grizzly.com to order new labels.

