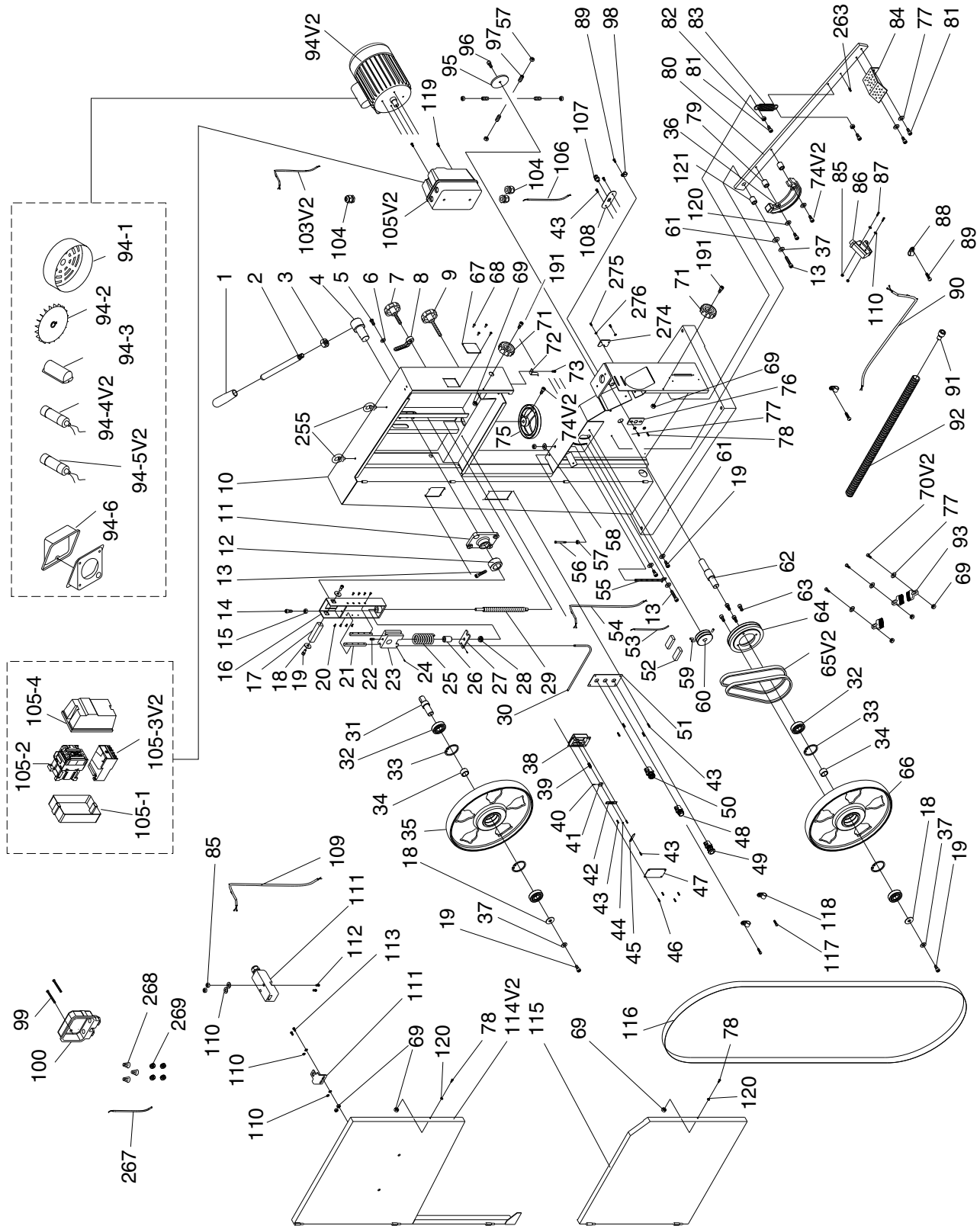


SECTION 9: PARTS

G0636X Main



G0636X Main Parts List

REF	PART #	DESCRIPTION
1	P0636X001	HANDLE
2	P0636X002	LEVER ROD M16-2
3	PN13M	HEX NUT M16-2
4	P0636X004	ROTATE SHAFT
5	PBHS25M	BUTTON HD CAP SCR M10-1.5 X 20
6	PLW06M	LOCK WASHER 10MM
7	P0636X007	BLADE TRACKING KNOB M10-1.5 x 25
8	P0636X008	BLADE TRACKING LOCK LEVER 10MM
9	P0636X009	GUIDE POST LOCK KNOB M10-1.5 X 25
10	P0636X010	MACHINE BODY
11	P0636X011	PILLOW BLOCK
12	P0636X012	CAM
13	PCAP31M	CAP SCREW M8-1.25 X 25
14	PB82M	HEX BOLT M8-1.25 X 80
15	PN03M	HEX NUT M8-1.25
16	P0636X016	UPPER WHEEL HINGE
17	P0636X017	SQUARE SHAFT
18	P0636X018	SQUARE SHAFT WASHER 8MM
19	PCAP14M	CAP SCREW M8-1.25 X 20
20	PFH39M	FLAT HD SCR M5-.8 X 16
21	P0636X021	LOCATE PLATE
22	PSS75M	SET SCREW M10-1.5 X 16
23	P0636X023	GUIDE BLOCK
24	PSS07M	SET SCREW M5-.8 X 5
25	P0636X025	COMPRESSION SPRING
26	P0636X026	BUSHING
27	P0636X027	PRESS BLOCK
28	P51201	THRUST BEARING 51201
29	P0636X029	BLADE TENSION SHAFT
30	P0636X030	TENSION LINE
31	P0636X031	UPPER WHEEL SHAFT
32	P6306ZZ	BALL BEARING 6306ZZ
33	PR64M	INT RETAINING RING 72MM
34	P0636X034	BUSHING
35	P0636X035	UPPER WHEEL
36	P0636X036	BRAKE PAD
37	PLW04M	LOCK WASHER 8MM
38	P0636X038	UPPER WHEEL SLIDING BRACKET
39	P0636X039	COMPRESSION SPRING
40	P0636X040	GUIDE PIN 3 X 12
41	P0636X041	MOVING PLATE
42	P0636X042	FIXED PLATE
43	PHTEK15M	TAP SCREW M4 X 10
44	PW05M	FLAT WASHER 4MM
45	P0636X045	TENSION POINTER
46	PHTEK6M	TAP SCREW M4 X 16
47	P0636X047	TENSION SCALE
48	P0636X048	START SWITCH
49	P0636X049	STOP SWITCH
50	P0636X050	KEY SWITCH
51	P0636X051	SWITCH PLATE
52	P0636X052	CONNECTING BLOCK
53	P0636X053	CONNECTING CORD
54	P0636X054	SWITCH CORD
55	P0636X055	ADJUST BOLT
56	PB73M	HEX BOLT M10-1.5 X 50
57	PN02M	HEX NUT M10-1.5

REF	PART #	DESCRIPTION
58	PW04M	FLAT WASHER 10MM
59	PSS04M	SET SCREW M6-1 X 12
60	P0636X060	MOTOR PULLEY
61	PW01M	FLAT WASHER 8MM
62	P0636X062	LOWER WHEEL SHAFT
63	PBHS22M	BUTTON HD CAP SCR M8-1.25 X 20
64	P0636X064	WHEEL PULLEY
65V2	PVA38	V-BELT A38
66	P0636X066	LOWER WHEEL
67	P0636X067	TRACKING WINDOW
68	P0636X068	RIVET 3.2 X 10
69	PLN03M	LOCK NUT M6-1
70V2	PB10M	HEX BOLT M6-1 X 25
71	P0636X071	KNOB
72	P0636X072	HEIGHT POINTER
73	PFS07M	FLANGE SCREW M5-.8 X 10
74V2	PCAP07M	CAP SCREW M6-1 X 30
75	P0636X075	BLADE TENSION HANDWHEEL
76	P0636X076	LOWER WHEEL SUPPORT
77	PW03M	FLAT WASHER 6MM
78	PFS11M	FLANGE SCREW M6-1 X 10
79	P0636X079	BUSHING
80	P0636X080	BRAKE LEVER
81	PCAP01M	CAP SCREW M6-1 X 16
82	PN01M	HEX NUT M6-1
83	P0636X083	EXTENSION SPRING
84	P0636X084	BRAKE STEP PLATE
85	PN04M	HEX NUT M4-.7
86	P0636X086	LIMIT SWITCH KL7141
87	PS51M	PHLP HD SCR M4-.7 X 30
88	P0636X088	CORD CLAMP 5/8"
89	PHTEK4M	TAP SCREW M4 X 8
90	P0636X090	BRAKE LEVER CORD
91	P0636X091	CORD BUSHING
92	P0636X092	PROTECT TUBE 1/2" X 43-5/16"
93	P0636X093	BRUSH
94V2	P0636X094V2	MOTOR 5HP V2.06.08
94-1	P0636X094-1	MOTOR COVER
94-2	P0636X094-2	MOTOR FAN
94-3	P0636X094-3	CAPACITOR COVER
94-4V2	P0636X094-4V2	S CAPACITOR 300M 250V 1-3/4 x 4 V2.06.08
94-5V2	P0636X094-5V2	R CAPACITOR 45M 450V 2 x 3-1/2 V2.06.08
94-6	P0636X094-6	JUNCTION BOX
95	P0636X095	ADJUSTMENT HUB COVER
96	PBHS22M	BUTTON HD CAP SCR M8-1.25 X 20
97	P0636X097	SET BOLT M10-1.5 X 30
98	P0636X098	CORD CLAMP 1/2"
99	PFS09M	FLANGE SCREW M5-.8 X 50
100	P0636X100	TERMINAL BOX
103V2	P0636X103V2	POWER CORD 12G 3W V2.11.10
104	P0636X104	STRAIN RELIEF M20
105V2	P0636X105V2	MAGNETIC SWITCH MPE-30 V2.11.10
105-1	P0636X105V2	MAG SWITCH BACK COVER
105-2	P0636X105V2	CONTACTOR SDE MA-30
105-3V2	P0636X105-3V2	OL RELAY SDE RA-30 18-26A V2.11.10
105-4	P0636X105V2	MAG SWITCH FRONT COVER



G0636X Main Parts List

REF	PART #	DESCRIPTION
106	P0636X106	MOTOR CORD
107	P0636X107	STRAIN RELIEF M20
108	P0636X108	PLATE
109	P0636X109	SWITCH CORD 18G 2W
110	PW05M	FLAT WASHER 4MM
111	P0636X111	DOOR LATCH SWITCH ASM ADZ-S11
112	PFS10M	FLANGE SCREW M4-.7 X 35
113	PS38M	PHLP HD SCR M4-.7 X 10
114V2	P0636X114V2	UPPER WHEEL COVER V2.06.08
115	P0636X115	LOWER WHEEL COVER
116	P0636X116	SAW BLADE 3TPI 162" X 1" X 0.035
117	PHTEK15M	TAP SCREW M4 X 10
118	P0636X118	CORD CLAMP 5/16"

REF	PART #	DESCRIPTION
119	PFS07M	FLANGE SCREW M5-.8 X 10
120	PLW03M	LOCK WASHER 6MM
121	P0636X121	BUSHING
191	PCAP06M	CAP SCREW M6-1 X 25
255	P0636X255	EYE BOLT M10-1.5- X 15
263	P0636X263	NYLON SET SCREW M7 X 10
267	P0636X267	CONNECTING CORD 12G 3C
268	P0636XB258	WIRE NUT P3
269	PTLW02M	EXT TOOTH WASHER 5MM
274	P0636X274	STOP PLATE
275	PCAP33M	CAP SCREW M5-.8 X 12
276	PW02M	FLAT WASHER 5MM



G0636X Fence/Guides/Trunnion Parts List

REF	PART #	DESCRIPTION
122	P0636X122	TAP SCREW 3.5 X 8
123	P0636X123	FENCE PIECE 148 X 22 X 1
124	P0636X124	RESAW FENCE AL 505MM
125	P0636X125	FENCE
126	P0636X126	MOVING PLATE
127	P0636X127	PLASTIC SET SCREW
128	PW01M	FLAT WASHER 8MM
129	P0636X129	LOCK KNOB M8-1.25 X 44
130	P0636X130	PIVOT BLOCK
131	PN03M	HEX NUT M8-1.25
132	P0636X132	FENCE HANDLE M8-1.25 X 20
133	P0636X133	SPRING PIECE
134	PFS17M	FLANGE SCREW M4-.7 X 8
135	P0636X135	POINTER
136	PFS01M	FLANGE SCREW M5-.8 X 8
137V2	P0636X137V2	GUARD RAIL SQUARE V2.09.11
138	P0636X138	GUARD RAIL PLATE
139	PW01M	FLAT WASHER 8MM
140	PLW04M	LOCK WASHER 8MM
141	PCAP14M	CAP SCREW M8-1.25 X 20
142	PCAP72M	CAP SCREW M10-1.5 X 30
143	PLW06M	LOCK WASHER 10MM
144	PW04M	FLAT WASHER 10MM
145	PFS11M	FLANGE SCREW M6-1 X 10
146	P0636X146	BLADE GUARD
147	PCAP84M	CAP SCREW M10-1.5 X 35
148	PB09M	HEX BOLT M8-1.25 X 20
149	P0636X149	MICRO ADJUSTING RING
150	P0636X150	PRESS SHAFT
151	PN09M	HEX NUT M12-1.75
152	P0636X152	HANDLE SHAFT
153	P0636X153	HANDLE KNOB M12-1.75 FEMALE
154	P0636X154	TRUNNION HOUSING
155	P0636X155	POINTER
156	PS38M	PHLP HD SCR M4-.7 X 10
157	P0636X157	TRUNNION BLOCK
158	P0636X158	PRESS BLOCK
159	P0636X159	TABLE
160	P0636X160	MITER GAUGE ASSEMBLY
160-2	P0636X160	GUIDE BAR
160-3	P0636X160	LOCKING BRACKET
160-4	P0636X160	LOCKING SHAFT
160-5	P0636X160	POINTER
160-6	P0636X160	STEP SCREW
160-7	P0636X160	HANDLE 5/16-18 X 1-1/2
160-8	P0636X160	MITER GAUGE BODY
160-9	PFH9M	FLAT HD SCR M6-1 X 6
160-10	PS06	PHLP HD SCR 10-24 X 3/8
160-11	PS56M	PHLP HD SCR M4-.7 X 16
160-12	PN04M	HEX NUT M4-.7
160-13	PW01M	FLAT WASHER 8MM
161	P0636X161	TABLE INSERT
162	P0636X162	SHAFT
163	P0636X163	NYLON PIECE
164	P0636X164	HANDLE 3/8-16 X 1/2
165	PCAP06M	CAP SCREW M6-1 X 25

REF	PART #	DESCRIPTION
167	P0636X167	LOCK COLLAR
166	P0636X166	HANDWHEEL
168	PSS07M	SET SCREW M5-.8 X 5
169	P0636X169	BUSHING
170	PBHS04M	BUTTON HD CAP SCR M8-1.25 X 35
171	PW01M	FLAT WASHER 8MM
172	P0636X172	UPPER GUIDE BRACKET
173	PN05M	HEX NUT M16-1.5
174	P0636X174	WORM SHAFT
175	P0636X175	WORM GEAR
176	P0636X176	FIXED PLATE
177	P0636X177	FIXED BOLT
178	P0636X178	UPPER GUIDE BRACKET COVER
179	PLW04M	LOCK WASHER 8MM
180	PCAP11M	CAP SCREW M8-1.25 X 16
181	PFH19M	FLAT HD SCR M4-.7 X 10
182	P0636X182	RACK
183	P0636X183	EXTENSION RACK
184	P0636X184	UPPER GUIDE SUPPORT BLOCK
185	PB04M	HEX BOLT M6-1 X 10
186	P0636X186	UPPER GUIDE BAR
187	PN04M	HEX NUT M4-.7
188	PS38M	PHLP HD SCR M4-.7 X 10
189	PCAP01M	CAP SCREW M6-1 X 16
191	PCAP06M	CAP SCREW M6-1 X 25
192V2	P0636X192V2	HANDWHEEL W/HANDLE V2.06.08
193	P0636X193	LOCK COLLAR
194	PSS07M	SET SCREW M5-.8 X 5
195	P0636X195	BUSHING
196	PBHS22M	BUTTON HD CAP SCR M8-1.25 X 20
197	PW01M	FLAT WASHER 8MM
198	P0514X2121	TRUNNION PLATE
199	P0636X199	TABLE TILT GUIDE BRACKET
200	PN05M	HEX NUT M16-1.5
201	P0636X201	WORM CYLINDER
202	P0636X202	WORM GEAR
203	P0636X203	FIXED PLATE
204	P0636X204	FIXED BOLT
205	P0636X205	TABLE TILT GUIDE BRACKET COVER
206	PLW04M	LOCK WASHER 8MM
207	PCAP11M	CAP SCREW M8-1.25 X 16
208	PFS07M	FLANGE SCREW M5-.8 X 10
209	P0636X209	COVER
210	PN06M	HEX NUT M5-.8
211	PFH19M	FLAT HD SCR M4-.7 X 10
212	P0636X212	RACK
213	P0636X213	EXTENSION RACK
214	P0636X214	SQUARE TUBE
218	PCAP14M	CAP SCREW M8-1.25 X 20
219	PCAP04M	CAP SCREW M6-1 X 10
220	PLW03M	LOCK WASHER 6MM
221	PW03M	FLAT WASHER 6MM
222	P0636X222	SUPPORT PLATE
224	P0636X224	PROTECT COVER ASM
225	P0636X225	SLIDING PLATE
226	P0636X226	FIBER WASHER 13MM



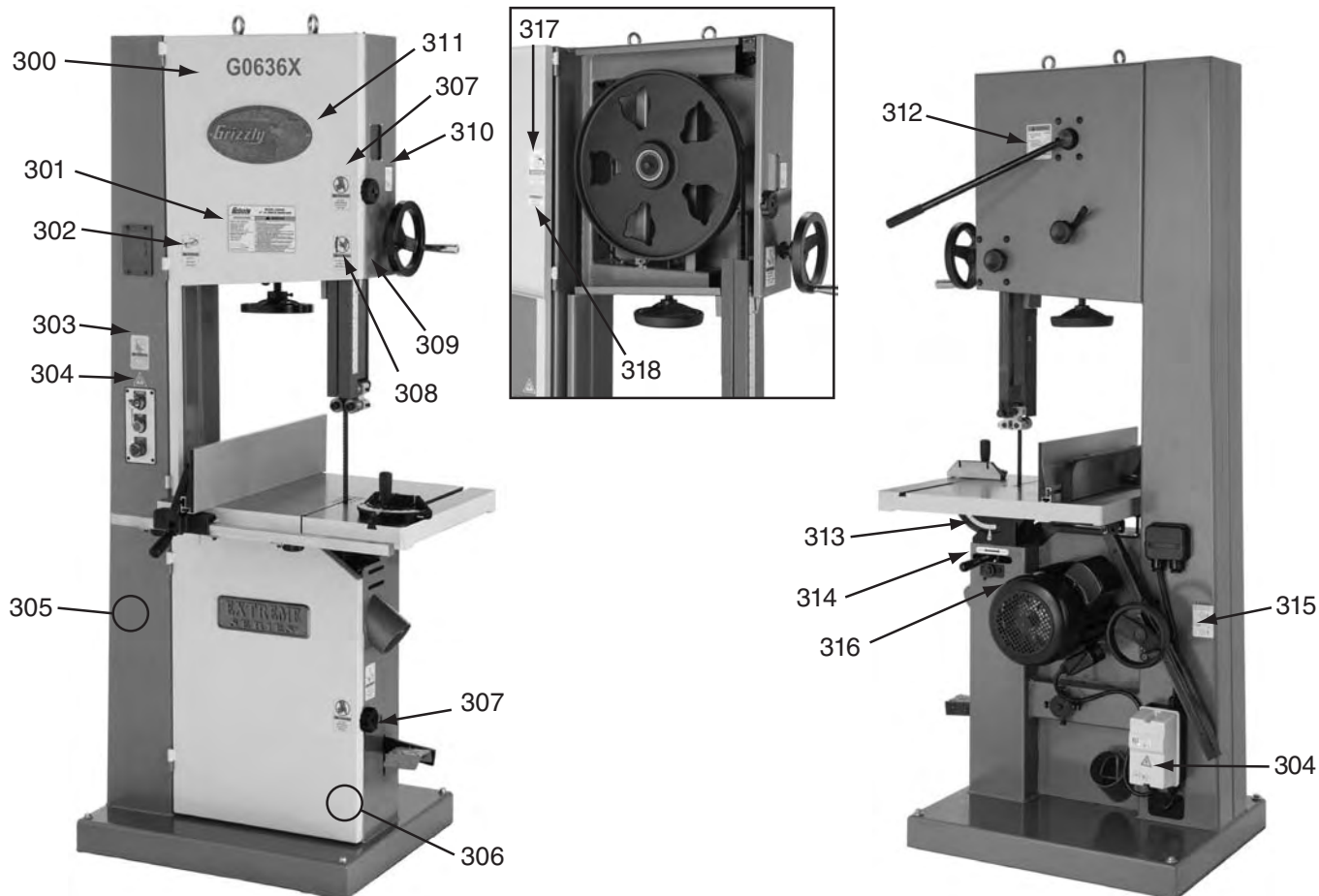
G0636X Fence/Guides/Trunnion Parts List

REF	PART #	DESCRIPTION
227	P0636X227	SHOULDER SCREW
228	PCAP04M	CAP SCREW M6-1 X 10
229	PLW03M	LOCK WASHER 6MM
230	PW03M	FLAT WASHER 6MM
231	PCAP60M	CAP SCREW M8-1.25 X 55
232	PW01M	FLAT WASHER 8MM
233V2	P0636X233V2	SLIDING PLATE V2.11.11
234	PLN04M	LOCK NUT M8-1.25
235	PB83M	HEX BOLT M6-1 X 16
236	PCAP01M	CAP SCREW M6-1 X 16
237	PW03M	FLAT WASHER 6MM
238	P0636X238	LOWER SUPPORT BRACKET
239	P0636X239	SHAFT
240	P0636X240	BLADE GUIDE SUPPORT
241	PB83M	HEX BOLT M6-1 X 16
242	P0636X242	ECCENTRIC SHAFT
243	PR05M	EXT RETAINING RING 15MM
244	P6202ZZ	BALL BEARING 6202ZZ

REF	PART #	DESCRIPTION
245	P0636X245	HANDLE BUSHING
246	PCAP29M	CAP SCREW M6-1 X 40
247	PR03M	EXT RETAINING RING 12MM
248	P6201ZZ	BALL BEARING 6201ZZ
249	P0636X249	SPACING SLEEVE
250	P0636X250	SHAFT
251	PWR1013	WRENCH 10 X 13
252	PWR1719	WRENCH 17 X 19
253	PAW05M	HEX WRENCH 5MM
254	PAW06M	HEX WRENCH 6MM
260	PFS02M	FLANGE SCREW M6-1 X 12
261	P0636X261	L-HOLDER PLATE
262	P0636X262	STOP BRACKET
264	PW03M	FLAT WASHER 6MM
265	PLW03M	LOCK WASHER 6MM
266	PCAP02M	CAP SCREW M6-1 X 20
277	PCAP26M	CAP SCREW M6-1 X 12



G0636X Labels



REF PART #	DESCRIPTION
300	P0636X300 MODEL NUMBER LABEL
301	P0636X301 MACHINE ID LABEL
302	PLABEL-11 SAFETY GLASSES LABEL
303	PLABEL-12 READ MANUAL LABEL
304	PLABEL-14 ELECTRICITY LABEL
305	PPAINT-1 GRIZZLY GREEN PAINT
306	PPAINT-11 GREY PUTTY TOUCH UP PAINT
307	PLABEL-20 DONT OPEN LABEL 2"W X 3 5/16"H
308	PLABEL-19 HANDS/BS BLADE LABEL 2" X 3 5/16"H
309	PLABEL-18 UNPLUG BANDSAW LABEL 2" X 3 5/16"H

REF PART #	DESCRIPTION
310	P0636X310 BLADE ASSEMBLY DIRECTION LABEL
311	G8589 GRIZZLY NAMEPLATE-LARGE
312	P0636X312 TENSION ADJ LABEL
313	P0636X313 TABLE ANGLE SCALE
314	P0636X314 TABLE LOCK LEVER LABEL
315	P0636X315 TABLE TILT HANDWHEEL LABEL
316	P0636X316 MOTOR LABEL
317	P0636X317 UPPER WHEEL HINGE/STOP LABEL
318	P0636X318 PATENT LABEL

WARNING

Safety labels help reduce the risk of serious injury caused by machine hazards. If any label comes off or becomes unreadable, the owner of this machine **MUST** replace it in the original location before resuming operations. For replacements, contact (800) 523-4777 or www.grizzly.com.

