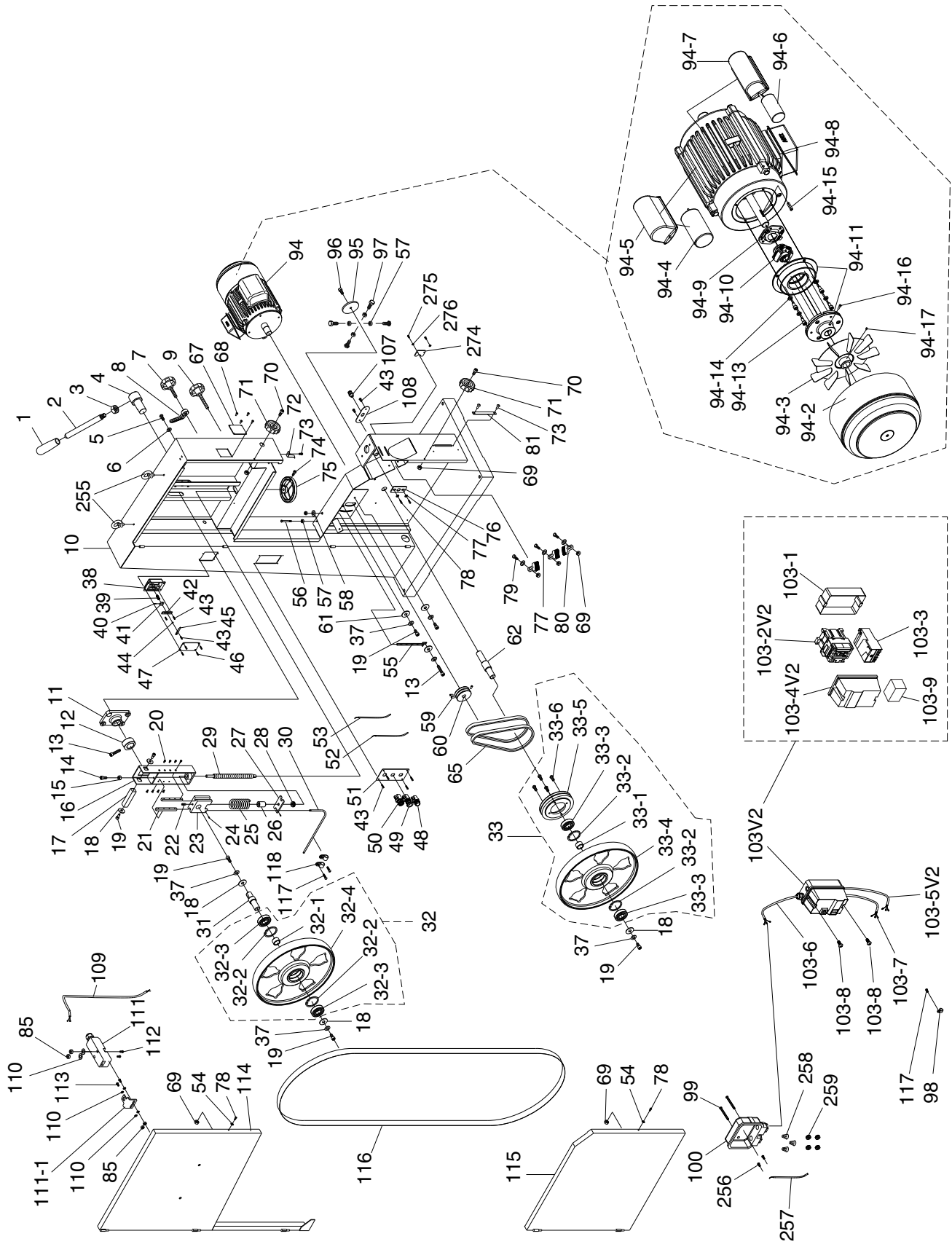


G0636XB Main



G0636XB Main Parts List

REF	PART #	DESCRIPTION
1	P0636X001	HANDLE
2	P0636X002	LEVER ROD M16-2
3	PN13M	HEX NUT M16-2
4	P0636X004	ROTATE SHAFT
5	PBHS25M	BUTTON HD CAP SCR M10-1.5 X 20
6	PLW06M	LOCK WASHER 10MM
7	P0636X007	BLD TRACKING KNOB M10-1.5 x 25
8	P0636X008	BLD TRACKING LOCK LEVER 10MM
9	P0636X009	GD POST LOCK KNOB M10-1.5 X 25
10	P0636X010	MACHINE BODY
11	P0636X011	PILLOW BLOCK
12	P0636X012	CAM
13	PCAP31M	CAP SCREW M8-1.25 X 25
14	PB28M	HEX BOLT M8-1.25 X 60
15	PN03M	HEX NUT M8-1.25
16	P0636X016	UPPER WHEEL HINGE
17	P0636X017	SQUARE SHAFT
18	P0636X018	SQUARE SHAFT WASHER 8MM
19	PCAP31M	CAP SCREW M8-1.25 X 25
20	PFH39M	FLAT HD SCR M5-.8 X 16
21	P0636X021	LOCATE PLATE
22	PSS75M	SET SCREW M10-1.5 X 16
23	P0636X023	GUIDE BLOCK
24	PSS07M	SET SCREW M5-.8 X 5
25	P0636X025	COMPRESSION SPRING
26	P0636X026	BUSHING
27	P0636X027	PRESS BLOCK
28	P51201	THRUST BEARING 51201
29	P0636X029	BLADE TENSION SHAFT
30	P0636X030	TENSION LINE
31	P0636X031	UPPER WHEEL SHAFT
32	P0636XB032	UPPER WHEEL ASSEMBLY
32-1	P0636X034	BUSHING
32-2	PR64M	INT RETAINING RING 72MM
32-3	P6306	BALL BEARING 6306ZZ
32-4	P0636X066	LOWER WHEEL
33	P0636XB033	LOWER WHEEL ASSEMBLY
33-1	P0636X034	BUSHING
33-2	PR64M	INT RETAINING RING 72MM
33-3	P6306	BALL BEARING 6306ZZ
33-4	P0636X066	LOWER WHEEL
33-5	P0636XB033-5	WHEEL PULLEY
33-6	PBHS22M	BUTTON HD CAP SCR M8-1.25 X 20
37	PLW04M	LOCK WASHER 8MM
38	P0636X038	UPPER WHEEL SLIDING BRACKET
39	P0636X039	COMPRESSION SPRING
40	P0636X040	GUIDE PIN 3 X 12
41	P0636X041	MOVING PLATE
42	P0636X042	FIXED PLATE
43	PHTEK15M	TAP SCREW M4 X 10
44	PW05M	FLAT WASHER 4MM
45	P0636X045	TENSION POINTER
46	PHTEK6M	TAP SCREW M4 X 16
47	P0636X047	TENSION SCALE

REF	PART #	DESCRIPTION
48	P0636X048	START SWITCH
49	P0636X049	STOP SWITCH
50	P0636X050	KEY SWITCH
51	P0636X051	SWITCH PLATE
52	P0636X052	CONNECTING CORD
53	P0636X053	CONNECTING CORD
54	PLW03M	LOCK WASHER 6MM
55	P0636X055	ADJUST BOLT
56	PB160M	HEX BOLT M10-1.5 X 70
57	PN02M	HEX NUT M10-1.5
58	PW04M	FLAT WASHER 10MM
59	PSS04M	SET SCREW M6-1 X 12
60	P0636X060	MOTOR PULLEY
61	PW01M	FLAT WASHER 8MM
62	P0636X062	LOWER SHAFT
65	PVA38	V-BELT A38
67	P0636X067	TRACKING WINDOW
68	P0636X068	RIVET 3.2 X 10
69	PLN03M	LOCK NUT M6-1
70	PCAP02M	CAP SCREW M6-1 X 20
71	P0636X071	KNOB
72	P0636X072	HEIGHT POINTER
73	PFS07M	FLANGE SCREW M5-.8 X 10
74	PCAP06M	CAP SCREW M6-1 X 25
75	P0636X075	BLADE TENSION HANDLEWHEEL
76	P0636X076	LOWER WHEEL SUPPORT
77	PW03M	FLAT WASHER 6MM
78	PFS11M	FLANGE SCREW M6-1 X 10
79	PB10M	HEX BOLT M6-1 X 25
80	P0636X093	BRUSH
81	P0636XB081	FOOT PEDAL COVER
85	PN04M	HEX NUT M4-.7
94	P0636XB094	MOTOR W/BRAKE 5HP 1PH 230V
94-2	P0531B023-2	MOTOR FAN COVER
94-3	P0636XB094-3	MOTOR FAN
94-4	P0636X094-4V2	S CAPACITOR 300M 250V 1-3/4 x 4
94-5	P0636XB094-5	S CAPACITOR COVER
94-6	P0636X094-5V2	R CAPACITOR 45M 450V 2 x 3-1/2
94-7	P0636XB094-7	R CAPACITOR COVER
94-8	P0531B023-8	JUNCTION BOX
94-8	P0531B023-8	JUNCTION BOX
94-9	P0531B023-9	CENTRIFUGAL SWITCH PLATE
94-10	P0566B023-10	CENTRIFUGAL SWITCH
94-11	P0566B023-11	MAGNETIC BRAKE W/SHOE
94-13	PCAP26M	CAP SCREW M6-1 X 12
94-14	PLW03M	LOCK WASHER 6MM
94-15	PK23M	KEY 5 X 5 X 25
94-16	PCAP24M	CAP SCREW M5-.8 X 16
94-17	PSS02M	SET SCREW M6-1 X 6
95	P0636X095	ADJUSTMENT HUB COVER
96	PBHS22M	BUTTON HD CAP SCR M8-1.25 X 20
97	PB14M	HEX BOLT M10-1.5 X 35
98	P0636X098	CORD CLAMP 1/2"
99	PFS09M	FLANGE SCREW M5-.8 X 50



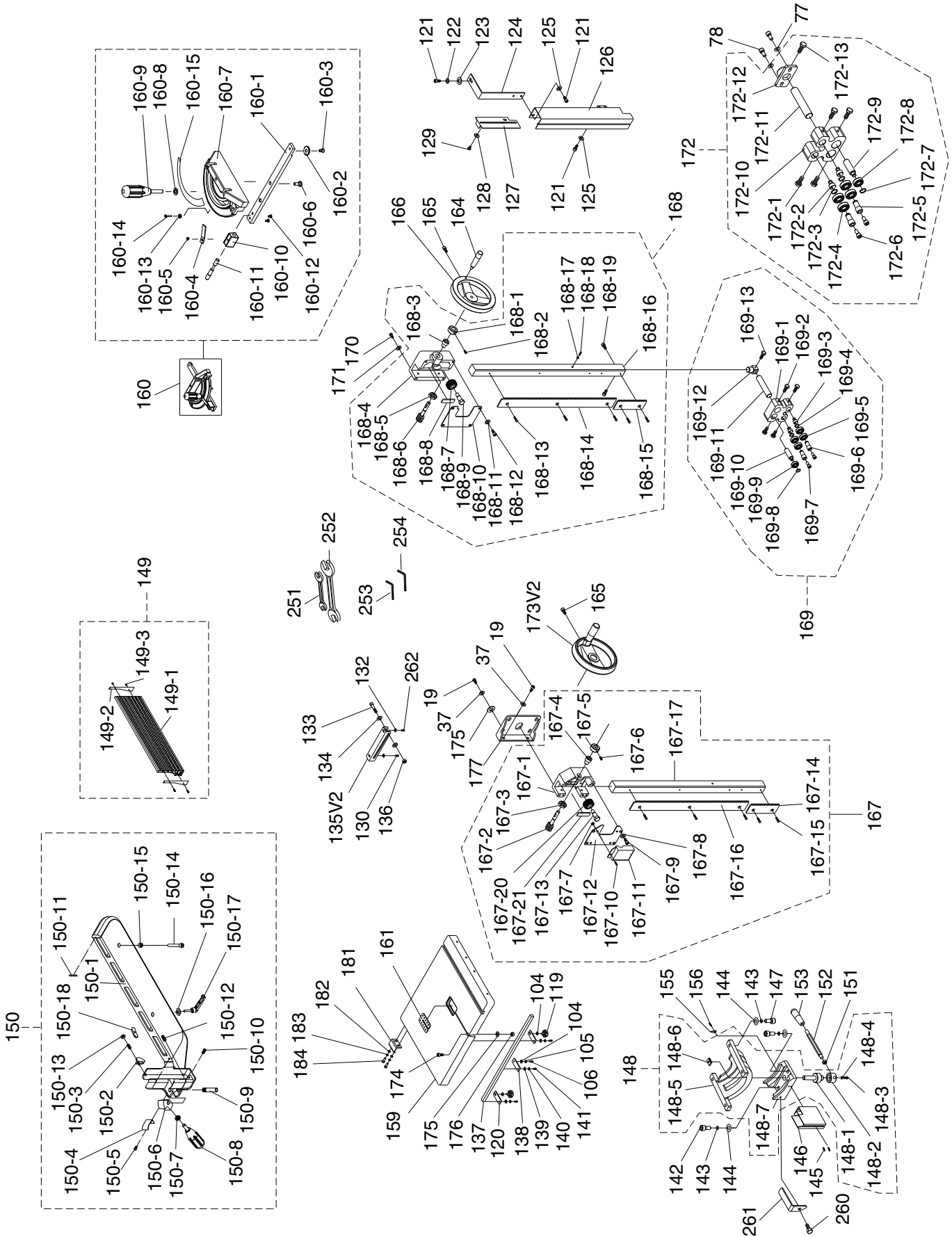
G0636XB Main Parts List

REF	PART #	DESCRIPTION
100	P0636X100	TERMINAL BOX
103V2	P0636XB103V2	MAG SWITCH ASSY SDE MPE-30 22A V2.11.10
103-1	P0636XB103-1	MAG SWITCH BACK COVER
103-2V2	P0636XB103-2V2	CONTACTOR SDE MA-30 230V V2.11.10
103-3	P0636XB103-3	OL RELAY SDE RA-30 18-26A
103-4V2	P0636XB103-4V2	MAG SWITCH FRONT COVER V2.11.10
103-5V2	P0636XB103-5V2	CONNECTING CORD 16G 5W V2.11.10
103-6	P0636XB103-6	POWER CORD 12G 3W
103-7	P0636XB103-7	MOTOR CORD 12G 5W
103-8	PFS07M	FLANGE SCREW M5-.8 X 10
103-9	P0636XB103-9	RECTIFIER PU-23-2
107	P0636XB107	STRAIN RELIEF M13.5
108	P0636X108	PLATE
109	P0636X109	SWITCH CORD 18G 2W
110	PW05M	FLAT WASHER 4MM
111	P0636X111	DOOR LATCH SWITCH ADZ-S11

REF	PART #	DESCRIPTION
111-1	P0636X111-1	DOOR LATCH
112	PFS10M	FLANGE SCREW M4-.7 X 35
113	PS38M	PHLP HD SCR M4-.7 X 10
114	P0636X114	UPPER WHEEL COVER
115	P0636X115	LOWER WHEEL COVER
116	P0636X116	SAW BLADE 3TPI 162" X 1" X 0.035
117	PHTEK15M	TAP SCREW M4 X 10
118	P0636X118	CORD CLAMP 5/16"
255	P0636X255	EYE BOLT M10-1.5- X 15
256	PS38M	PHLP HD SCR M4-.7 X 10
257	P0636XB257	CONNECTING CORD 12G 1W
258	P0636XB258	WIRE NUT P3
259	PTLW02M	EXT TOOTH WASHER 5MM
274	P0636X274	STOP PLATE
275	PCAP33M	CAP SCREW M5-.8 X 12
276	PW02M	FLAT WASHER 5MM



G0636XB Fence/Guides/Trunnion



G0636XB Fence/Guides/Trunnion Parts List

REF	PART #	DESCRIPTION
19	PCAP31M	CAP SCREW M8-1.25 X 25
37	PLW04M	LOCK WASHER 8MM
77	PW03M	FLAT WASHER 6MM
78	PFS11M	FLANGE SCREW M6-1 X 10
104	PW01M	FLAT WASHER 8MM
105	PLW04M	LOCK WASHER 8MM
106	PCAP14M	CAP SCREW M8-1.25 X 20
119	P0636XB119	KNOB BOLT M8-1.25 X 20
120	P0636XB120	OUTER RAIL PLATE
121	PCAP04M	CAP SCREW M6-1 X 10
122	PLW03M	LOCK WASHER 6MM
123	PW03M	FLAT WASHER 6MM
124	P0636X222	SUPPORT PLATE
125	PW03M	FLAT WASHER 6MM
126	P0636X224	PROTECT COVER (ASM)
127	P0636X225	SLIDING PLATE
128	P0636X226	FIBER WASHER 13MM
129	P0636X227	SHOULDER SCREW
130	PCAP04M	CAP SCREW M6-1 X 10
132	PW03M	FLAT WASHER 6MM
133	PB30M	HEX BOLT M8-1.25 X 55
134	PW01M	FLAT WASHER 8MM
135V2	P0636X233V2	SLIDING PLATE V2.11.11
136	PLN04M	LOCK NUT M8-1.25
137	P0636X137	GUARD RAIL
138	P0636X138	GUARD RAIL PLATE
139	PW03M	FLAT WASHER 6MM
140	PLW03M	LOCK WASHER 6MM
141	PCAP02M	CAP SCREW M6-1 X 20
142	PCAP72M	CAP SCREW M10-1.5 X 30
143	PLW06M	LOCK WASHER 10MM
144	PW04M	FLAT WASHER 10MM
145	PFS11M	FLANGE SCREW M6-1 X 10
146	P0636X146	BLADE GUARD
147	PCAP84M	CAP SCREW M10-1.5 X 35
148	P0636XB148	TRUNNION BRACKET ASSEMBLY
148-1	P0566168	PRESS SHAFT
148-2	P0636X149	MICRO ADJUSTING RING
148-3	PCAP14M	CAP SCREW M8-1.25 X 20
148-4	PLW04M	LOCK WASHER 8MM
148-5	P0566177	TRUNNION BLOCK
148-6	P0566178	PRESS BLOCK
148-7	P0636X154	TRUNNION HOUSING
149	P0513X2B156	RESAW FENCE ASSEMBLY
149-1	P0513X2B156-1	RESAW FENCE(AL) 590MM
149-2	PHTEK3M	TAP SCREW M3.5 X 8
149-3	P0636X123	FENCE PIECE 148 X 22 X 1
150	P0513X2B157	FENCE ASSMBLY
150-1	P0513X2B157-1	FENCE
150-2	P0513X2B157-2	POINTER
150-3	PSS09M	SET SCREW M8-1.25 X 20
150-4	P0513X2B157-4	SPRING PIECE

REF	PART #	DESCRIPTION
150-5	PFS17M	FLANGE SCREW M4-.7 X 8
150-6	P0513X2B157-6	PIVOT BLOCK
150-7	PN03M	HEX NUT M8-1.25
150-8	P0513X2B157-8	HANDLE
150-9	P0513X2B157-9	SHAFT
150-10	P0513X2B157-10	SET SCREW PLASTIC
150-11	P0513X2B157-11	NYLON PAD
150-12	PSS14M	SET SCREW M8-1.25 X 12
150-13	PN03M	HEX NUT M8-1.25
150-14	PCAP100M	CAP SCREW M8-1.25 X 15
150-15	PN03M	HEX NUT M8-1.25
150-16	PW01M	FLAT WASHER 8MM
150-17	P0513X2B157-17	LOCK HANDLE M8-1.25 X 44
150-18	P0513X2B157-18	MOVING PLATE
151	PN09M	HEX NUT M12-1.75
152	P0636X152	HANDLE SHAFT
153	P0636X153	HANDLE KNOB M12-1.75 (FEMALE)
155	P0636X155	POINTER
156	PS38M	PHLP HD SCR M4-.7 X 10
159	P0636X159	TABLE
160	P0636XB160	MITER GAUGE ASSEMBLY
160-1	P0513X152	GUIDE BAR
160-2	P0513X2B152-2	GUIDE PIECE
160-3	PFH04M	FLAT HD SCR M6-1 X 8
160-4	P0513X2B152-4	POINTER
160-5	PS06	PHLP HD SCR 10-24 X 3/8
160-6	P0513X2B152-6	SHOULDER SCREW
160-7	P0513X2B152-7	MITER GAUGE BODY
160-8	PW01M	FLAT WASHER 8MM
160-9	P0513X2B152-9	HANDLE
160-10	P0513X2B152-10	FIXED BLOCK
160-11	P0513X2B152-11	LOCKING SHAFT
160-12	PS06	PHLP HD SCR 10-24 X 3/8
160-13	PN04M	HEX NUT M4-.7
160-14	PS56M	PHLP HD SCR M4-.7 X 16
160-15	P0513X2B152-15	SCALE
161	P0636X161	TABLE INSERT
164	P0636X164	HANDLE 3/8-16 X 1/2
165	PCAP06M	CAP SCREW M6-1 X 25
166	P0636X166	HANDWHEEL 7" (STEEL)
167	P0636XB167	TABLE TILT ASSEMBLY
167-1	P0566198	GUIDE BRACKET
167-2	P0566196	WORM SHAFT
167-3	PN05M	HEX NUT M16-1.5
167-4	P0566201	BUSHING
167-5	P0636X193	LOCK COLLAR
167-6	PSS07M	SET SCREW M5-.8 X 5
167-7	PN06M	HEX NUT M5-.8
167-8	PLW04M	LOCK WASHER 8MM
167-9	PCAP11M	CAP SCREW M8-1.25 X 16
167-10	PFS07M	FLANGE SCREW M5-.8 X 10
167-11	P0566187	COVER



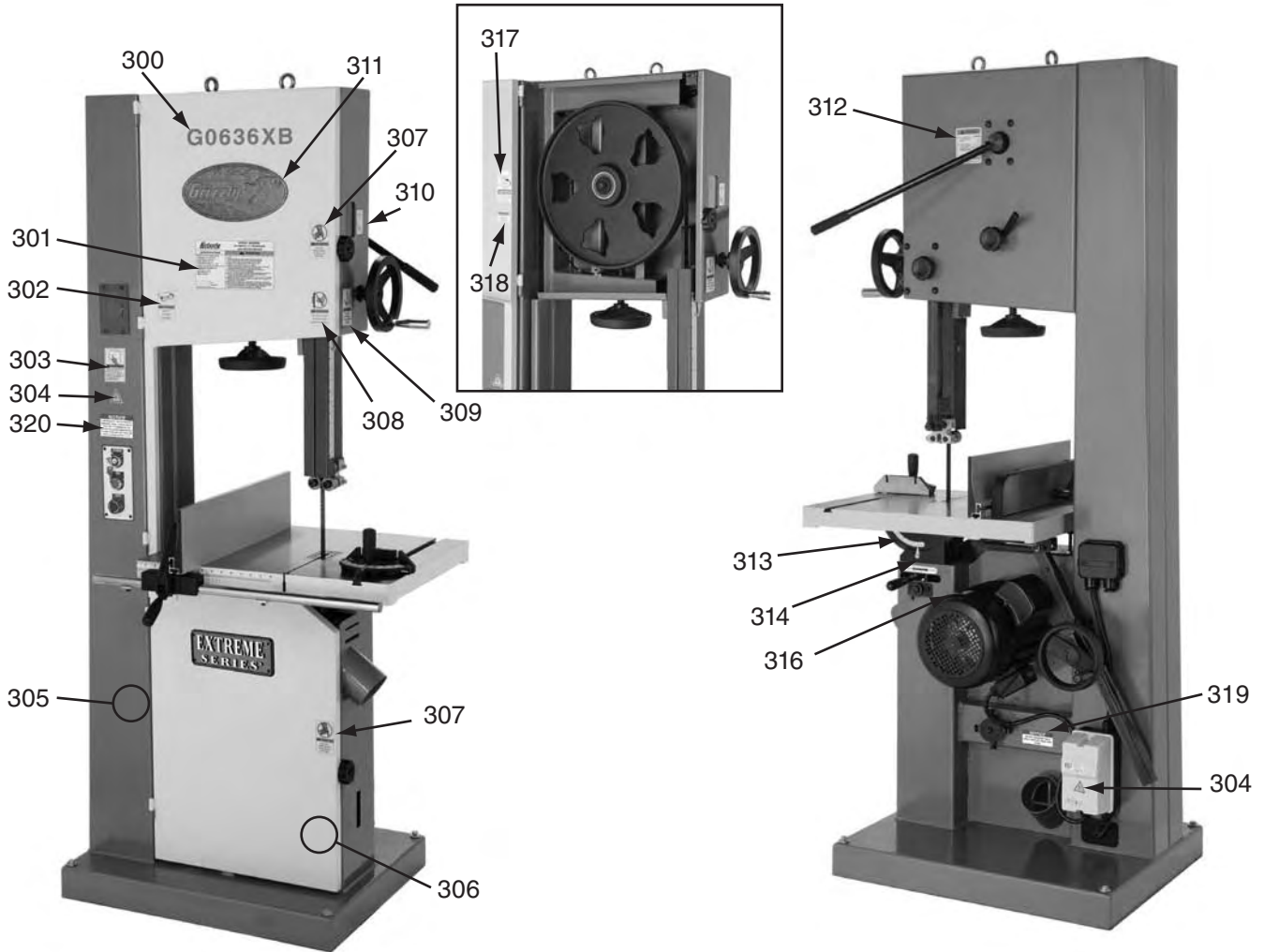
G0636XB Fence/Guides/Trunnion Parts List

REF	PART #	DESCRIPTION
167-12	P0566192	COVER
167-13	P0636XB167-13	FIXED BOLT 12 X 43 X 10M 1.5P
167-14	P0566191	EXTENSION RACK
167-15	PFH19M	FLAT HD SCR M4-.7 X 10
167-16	P0566207	RACK
167-17	P0566206	UPPER GUIDE BAR
167-20	P0566194	PINION GEAR
167-21	P0566195	FIXED PLATE
168	P0636XB168	UPPER GUIDE ASSEMBLY
168-1	P0636X167	LOCK COLLAR
168-2	PSS07M	SET SCREW M5-.8 X 5
168-3	P0636X169	BUSHING
168-4	P0636X172	UPPER GUIDE BRACKET
168-5	PN05M	HEX NUT M16-1.5
168-6	P0636X174	WORM SHAFT
168-7	P0636X175	WORM GEAR
168-8	P0636X176	FIXED PLATE
168-9	P0636X177	FIXED BOLT
168-10	P0636X178	COVER
168-11	PLW04M	LOCK WASHER 8MM
168-12	PB06M	HEX BOLT M8-1.25 X 12
168-13	PFH19M	FLAT HD SCR M4-.7 X 10
168-14	P0636X182	RACK
168-15	P0636X183	EXTENSION RACK
168-16	P0636X186	UPPER GUIDE BAR
168-17	PN04M	HEX NUT M4-.7
168-18	PS38M	PHLP HD SCR M4-.7 X 10
168-19	PCAP01M	CAP SCREW M6-1 X 16
169	P0636XB169	UPPER BLADE GUIDE ASSEMBLY
169-1	P0636X240	UPPER BLADE GUIDE SUPPORT
169-2	PB83M	HEX BOLT M6-1 X 16
169-3	P0636X242	ECCENTRIC SHAFT
169-4	PR05M	EXT RETAINING RING 15MM
169-5	P6202ZZ	BALL BEARING 6202ZZ
169-6	P0636XB169-6	HANDLE BEARING
169-7	PCAP29M	CAP SCREW M6-1 X 40
169-8	PR03M	EXT RETAINING RING 12MM

REF	PART #	DESCRIPTION
169-9	P6201ZZ	BALL BEARING 6201ZZ
169-10	P0636X249	UPPER SPACING SLEEVE
169-11	P0636X250	SHAFT
169-12	P0636X184	UPPER GUIDE SUPPORT BLOCK
169-13	PB04M	HEX BOLT M6-1 X 10
170	PBHS04M	BUTTON HD CAP SCR M8-1.25 X 35
171	PW01M	FLAT WASHER 8MM
172	P0636XB172	LOWER BLADE GUIDE ASSEMBLY
172-1	PB83M	HEX BOLT M6-1 X 16
172-2	P0636X242	ECCENTRIC SHAFT
172-3	PR05M	EXT RETAINING RING 15MM
172-4	P6202ZZ	BALL BEARING 6202ZZ
172-5	P0636X245	HANDLE BUSHING
172-6	PCAP29M	CAP SCREW M6-1 X 40
172-7	PR03M	EXT RETAINING RING 12MM
172-8	P6201ZZ	BALL BEARING 6201ZZ
172-9	P0636X249	SPACING SLEEVE
172-10	P0636X240	BLADE GUIDE SUPPORT
172-11	P0636X239	SHAFT
172-12	P0636X238	LOWER SUPPORT BRACKET
172-13	PB83M	HEX BOLT M6-1 X 16
173V2	P0636XB173V2	HANDWHEEL V2.06.08
174	PB166M	HEX BOLT M8-1.25 X 50
175	PW01M	FLAT WASHER 8MM
176	PN03M	HEX NUT M8-1.25
177	P0636XB177	SUPPORT PLATE
181	P0636X262	STOP BRACKET
182	PLW03M	LOCK WASHER 6MM
183	PW03M	FLAT WASHER 6MM
184	PB83M	HEX BOLT M6-1 X 16
251	PWR1013	WRENCH 10/13
252	PWR1719	WRENCH 17/19
253	PAW05M	HEX WRENCH 5MM
254	PAW06M	HEX WRENCH 6MM
260	PFS02M	FLANGE SCREW M6-1 X 12
261	P0636X261	L-HOLDER PLATE
262	PCAP26M	CAP SCREW M6-1 X 12



G0636XB Labels



REF	PART #	DESCRIPTION
300	P0636XB300	MODEL NUMBER LABEL
301	P0636XB301	MACHINE ID LABEL
302	PLABEL-11	SAFETY GLASSES LABEL
303	PLABEL-12	READ MANUAL LABEL
304	PLABEL-14	ELECTRICITY LABEL
305	PPAINT-1	GRIZZLY GREEN PAINT
306	PPAINT-11	GREY PUTTY TOUCH UP PAINT
307	PLABEL-20	DONT OPEN LABEL 2"W X 3 5/16"H
308	PLABEL-19	HANDS/BS BLADE LABEL 2" X 3 5/16"H
309	PLABEL-18	UNPLUG BANDSAW LABEL 2" X 3 5/16"H

REF	PART #	DESCRIPTION
310	P0636X310	BLADE ASSEMBLY DIRECTION LABEL
311	G8589	GRIZZLY NAMEPLATE-LARGE
312	P0636X312	TENSION ADJ LABEL
313	P0636X313	TABLE ANGLE SCALE
314	P0636X314	TABLE LOCK LEVER LABEL
316	P0636X316	MOTOR LABEL
317	P0636X317	UPPER WHEEL HINGE/STOP BOLT LABEL
318	P0636X318	PATENT LABEL
319	P0566301	TABLE LOCK LABEL
320	P0636XB320	MAGNETIC BRAKE NOTICE

WARNING

Safety labels help reduce the risk of serious injury caused by machine hazards. If any label comes off or becomes unreadable, the owner of this machine **MUST** replace it in the original location before resuming operations. For replacements, contact (800) 523-4777 or www.grizzly.com.

