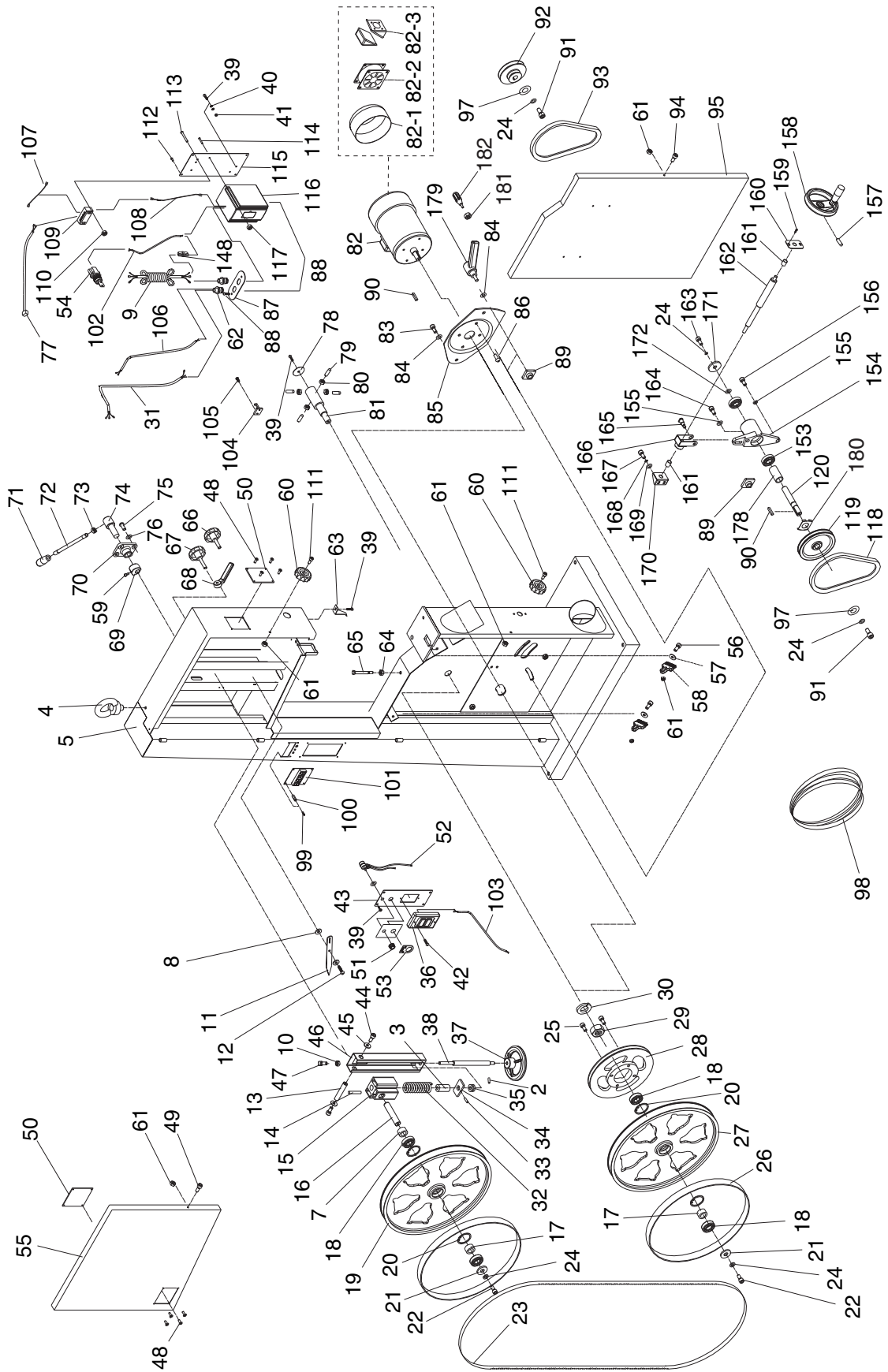
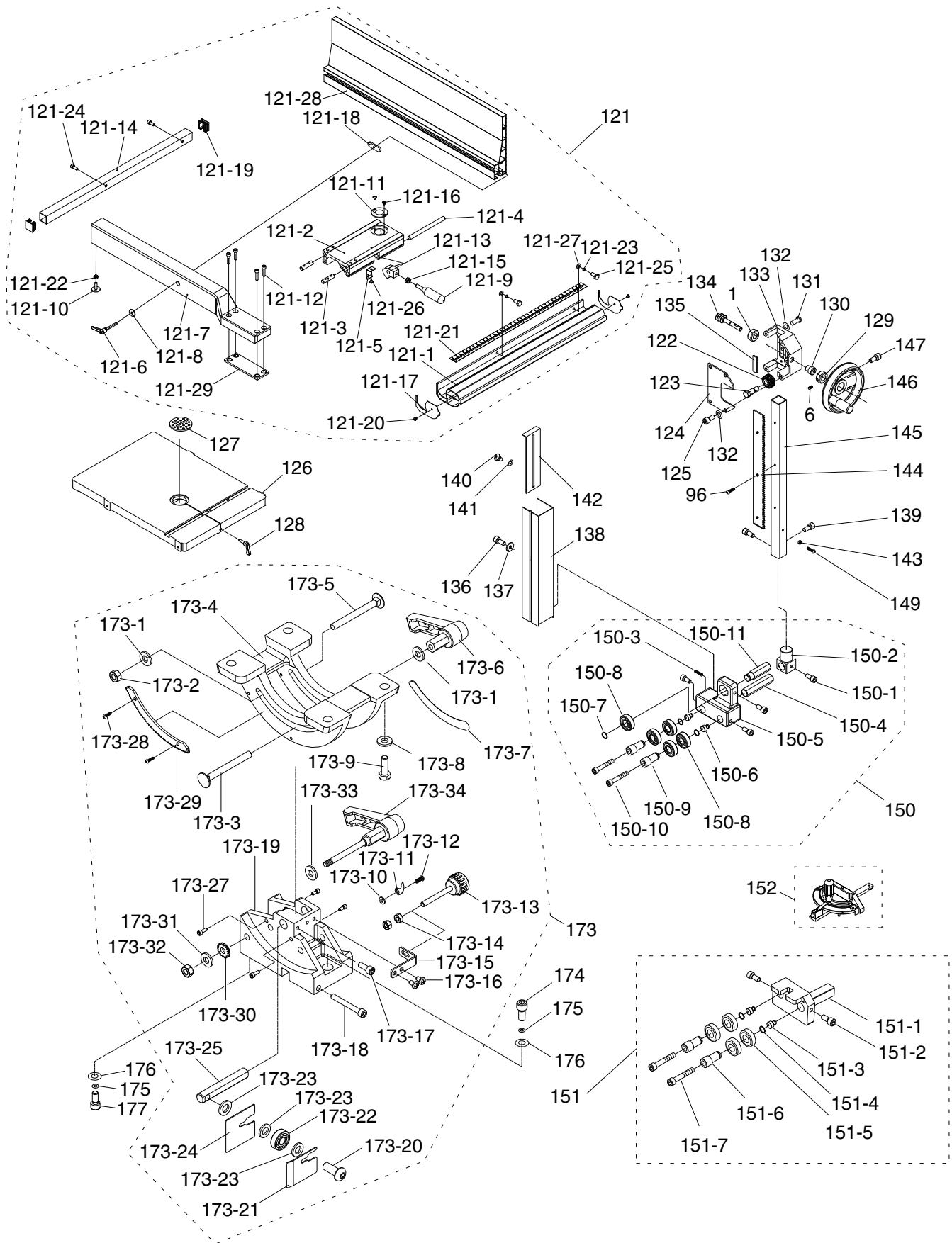


Main Parts



Fence & Blade Guides



Parts List

REF	PART #	DESCRIPTION
1	P0640X001	BUSHING
2	PSS01M	SET SCREW M6-1 X 10
3	P0640X003	BUSHING
4	P0640X004	LIFTING EYE BOLT
5	P0640X005	MACHINE BODY
6	PSS26M	SET SCREW M5-.8 X 6
7	P0640X007	BUSHING
8	PW05M	FLAT WASHER 4MM
9	P0640X009	POWER CORD 14AWG
10	PN01M	HEX NUT M6-1
11	P0640X011	POINTER
12	P0640X012	STEP SCREW M4-.7 x 6
13	P0640X013	UPPER SHAFT
14	PRP91M	ROLL PIN 5 X 35
15	P0640X015	UPPER WHEEL SHAFT HINGE
16	P0640X016	UPPER WHEEL SHAFT
17	P0640X017	BUSHING
18	P6205	BALL BEARING 6205ZZ
19	P0640X019	UPPER WHEEL 17"
20	PR25M	INT RETAINING RING 47MM
21	PW01M	FLAT WASHER 8MM
22	PSB11M	CAP SCREW M8-1.25 X 16
23	P0640X023	SAW BLADE 131-1/2" X 1/2"
24	PLW04M	LOCK WASHER 8MM
25	PSB14M	CAP SCREW M8-1.25 X 20
26	P0640X026	TIRE
27	P0640X027	LOWER WHEEL 17"
28	P0640X028	IDLE PULLEY
29	PN32	HEX NUT 1"-14
30	PLW09	LOCK WASHER 1"
31	P0640X031	MOTOR CORD 3 WIRE
32	P0640X032	COMPRESSION SPRING
33	PRP02M	ROLL PIN 3 X 16
34	P0640X034	LOCATE BLOCK
35	P51201	THRUST BEARING 51201
36	P0640X036	SWITCH
37	P0640X037	HANDWHEEL
38	P0640X038	ADJUSTING BOLT
39	PFS07M	FLANGE SCREW M5-.8 X 10
40	PTLW02M	EXT TOOTH WASHER 5MM
41	PN06M	HEX NUT M5-.8
42	PFS08M	FLANGE SCREW M5-.8 X 16
43	P0640X043	SWITCH PLATE
44	PSB11M	CAP SCREW M8-1.25 X 16
45	PW01M	FLAT WASHER 8MM
46	P0640X046	UPPER WHEEL SLIDING BRACKET
47	PSB06M	CAP SCREW M6-1 X 25
48	P0640X048	RIVET 3.2 X 10
49	PSB04M	CAP SCREW M6-1 X 10
50	P0640X050	PLASTIC WINDOW
51	P0640X051	VS SWITCH

REF	PART #	DESCRIPTION
52	P0640X052	ADJUSTABLE RESISTOR
53	P0640X053	PLASTIC PIECE
54	P0640X054	KEY SWITCH
55	P0640X055	UPPER WHEEL COVER
56	PB10M	HEX BOLT M6-1 X 25
57	PW03M	FLAT WASHER 6MM
58	P0640X058	BRUSH
59	PSB06M	CAP SCREW M6-1 X 25
60	P0640X060	KNOB
61	PLN03M	LOCK NUT M6-1
62	P0640X062	STRAIN RELIEF 16MM
63	P0640X063	HEIGHT POINTER
64	PN03M	HEX NUT M8-1.25
65	PB45M	HEX BOLT M8-1.25 X 100
66	P0640X066	KNOB SCREW M10-1.5 X 20
67	P0640X067	KNOB SCREW M10-1.5 X 55
68	P0640X068	LOCATE HANDLE M10-1.5
69	P0640X069	CAM
70	P0640X070	LOCATE BLOCK
71	P0640X071	KNOB
72	P0640X072	LEVER ROD
73	PN09M	HEX NUT M12-1.75
74	P0640X074	SHAFT
75	PSBS22M	BUTTON HD CAP SCR M8-1.25 X 20
76	PLW04M	LOCK WASHER 8MM
77	P0640X077	PCB POWER CORD
78	P0640X078	COVER
79	PSS09M	SET SCREW M8-1.25 X 20
80	PN03M	HEX NUT M8-1.25
81	P0640X081	LOWER WHEEL SHAFT
82	P0640X082	MOTOR 1.5 HP 3PH
82-1	P0640X082-1	FAN COVER
82-2	P0640X082-2	FAN
82-3	P0640X082-3	ELECTRICAL BOX COVER
83	PB32M	HEX BOLT M10-1.5 X 25
84	PLW06M	LOCK WASHER 10MM
85	P0640X085	MOTOR BRACKET
86	PSBS22M	BUTTON HD CAP SCR M8-1.25 X 20
87	P0640X087	PLATE
88	PFS07M	FLANGE SCREW M5-.8 X 10
89	P0640X089	LOCATE BLOCK
90	PK15M	KEY 5 X 5 X 35
91	PB81M	HEX BOLT M8-1.25 X 20 (LH)
92	P0640X092	MOTOR PULLEY
93	PVA44	V-BELT A-44 4L440
94	PSB04M	CAP SCREW M6-1 X 10
95	P0640X095	LOWER WHEEL COVER
96	PFH31M	FLAT HD SCR M4-.7 X 8
97	PW01M	FLAT WASHER 8MM
98	P0640X098	METAL SAW BLADE 131-1/2" X 1/2"
99	PS12M	PHLP HD SCR M3-.5 X 6



Parts List

REF	PART #	DESCRIPTION
100	PN07M	HEX NUT M3-.5
101	P0640X101	DISPLAY PCB
102	P0640X102	KEY SWITCH CONNECT LINE 14AWG
103	P0640X103	SWITCH CONNECT LINE 20AWG
104	P0640X104	HOOK BLADE
105	PS38M	PHLP HD SCR M4-.7 X 10
106	P0640X106	MOTOR FAN CONNECT LINE
107	P0640X107	CONNECT LINE
108	P0640X108	CONNECT LINE
109	P0640X109	TERMINAL HOUSE
110	PN04M	HEX NUT M4-.7
111	PSB02M	CAP SCREW M6-1 X 20
112	PHTEK4M	TAP SCREW M4 X 8
113	PS06M	PHLP HD SCR M5-.8 X 20
114	PS40M	PHLP HD SCR M5-.8 X 16
115	P0640X115	CONTROLLER FIXED PLATE
116	P0640X116	AC MOTOR DRIVE 220V 2HP
117	PN06M	HEX NUT M5-.8
118	PVA27	V-BELT A-27 4L270
119	P0640X119	PULLEY
120	P0640X120	SHAFT
121	P0640X121	FENCE SET 590MM
121-1	P0640X121-1	FRONT RAIL 640MM
121-2	P0640X121-2	FENCE BASE
121-3	P0640X121-3	FIXED SHAFT
121-4	P0640X121-4	SHAFT
121-5	P0640X121-5	SPRING PIECE
121-6	P0640X121-6	LOCK HANDLE M8 X 44
121-7	P0640X121-7	FENCE 590MM
121-8	PW01M	FLAT WASHER 8MM
121-9	P0640X121-9	FENCE HANDLE M8-1.25 X 22
121-10	P0640X121-10	RAIL PAD
121-11	P0640X121-11	CONVEX
121-12	PSB06M	CAP SCREW M6-1 X 25
121-13	P0640X121-13	FIXED LUMP
121-14	P0640X121-14	REAR RAIL 640MM
121-15	PN03M	HEX NUT M8-1.25
121-16	PFS04M	FLANGE SCREW M4-.7 X 6
121-17	P0640X121-17	GUARD PIECE
121-18	P0640X121-18	T-SLOT NUT
121-19	P0640X121-19	PLUG
121-20	PHTEK3M	TAP SCREW M3.5 X 8
121-21	P0640X121-21	SCALE
121-22	PN01M	HEX NUT M6-1
121-23	PLW03M	LOCK WASHER 6MM
121-24	PSB114M	CAP SCREW M6-1 X 22
121-25	PB08M	HEX BOLT M6-1 X 20
121-26	PFB13M	FLANGE BOLT M4-.7 X 8
121-27	PW03M	FLAT WASHER 6MM
121-28	P0640X121-28	RESAW FENCE (AL) 590MM
121-29	P0640X121-29	SPACER PLATE
122	P0640X122	GEAR

REF	PART #	DESCRIPTION
123	P0640X123	FIXED BOLT
124	P0640X124	COVER
125	PSB11M	CAP SCREW M8-1.25 X 16
126	P0640X126	TABLE 17" X 24"
127	P0640X127	TABLE INSERT
128	P0640X128	TABLE PIN
129	P0640X129	LOCATE BUSHING
130	P0640X130	BUSHING
131	PSBS22M	BUTTON HD CAP SCR M8-1.25 X 20
132	PLW04M	LOCK WASHER 8MM
133	P0640X133	GUIDE BRACKET
134	P0640X134	WORM CYLINDER
135	P0640X135	FIXED PLATE
136	PSB50M	CAP SCREW M5-.8 X 10
137	PW02M	FLAT WASHER 5MM
138	P0640X138	PROTECT COVER
139	PSB01M	CAP SCREW M6-1 X 16
140	P0640X140	STEP SCREW
141	P0640X141	FIBER WASHER
142	P0640X142	SLIDING PLATE
143	PN04M	HEX NUT M4-.7
144	P0640X144	RACK
145	P0640X145	UPPER GUIDE HOSE
146	P0640X146	HANDWHEEL
147	PSB02M	CAP SCREW M6-1 X 20
148	P0640X148	CORD CONNETOR 224-201
149	PS38M	PHLP HD SCR M4-.7 X 10
150	P0640X150	UPPER GUIDE ASSEMBLY
150-1	PSB01M	CAP SCREW M6-1 X 16
150-2	P0640X150-2	UPPER GUIDE SUPPORT BLOCK
150-3	PSS01M	SET SCREW M6-1 X 10
150-4	P0640X150-4	ADJUST BAR
150-5	P0640X150-5	UPPER BLADE GUIDE SUPPORT
150-6	P0640X150-6	ECCENTRIC SHAFT
150-7	PR05M	EXT RETAINING RING 15MM
150-8	P6202	BALL BEARING 6202ZZ
150-9	P0640X150-9	HANDLE BUSHING
150-10	PSB48M	CAP SCREW M6-1 X 35
150-11	P0640X150-11	UPPER SPACING SLEEVE
151	P0640X151	LOWER GUIDE ASSEMBLY
151-1	P0640X151-1	LOWER BLADE GUIDE SUPPORT
151-2	PSB01M	CAP SCREW M6-1 X 16
151-3	P0640X151-3	ECCENTRIC SHAFT
151-4	PR05M	EXT RETAINING RING 15MM
151-5	P6202	BALL BEARING 6202ZZ
151-6	P0640X151-6	HANDLE BUSHING
151-7	PSB48M	CAP SCREW M6-1 X 35
152	P0640X152	MITER GAUGE ASSEMBLY
153	P6204LLU	BALL BEARING 6204LLU
154	P0640X154	BEARING STAND
155	PLW06M	LOCK WASHER 10MM



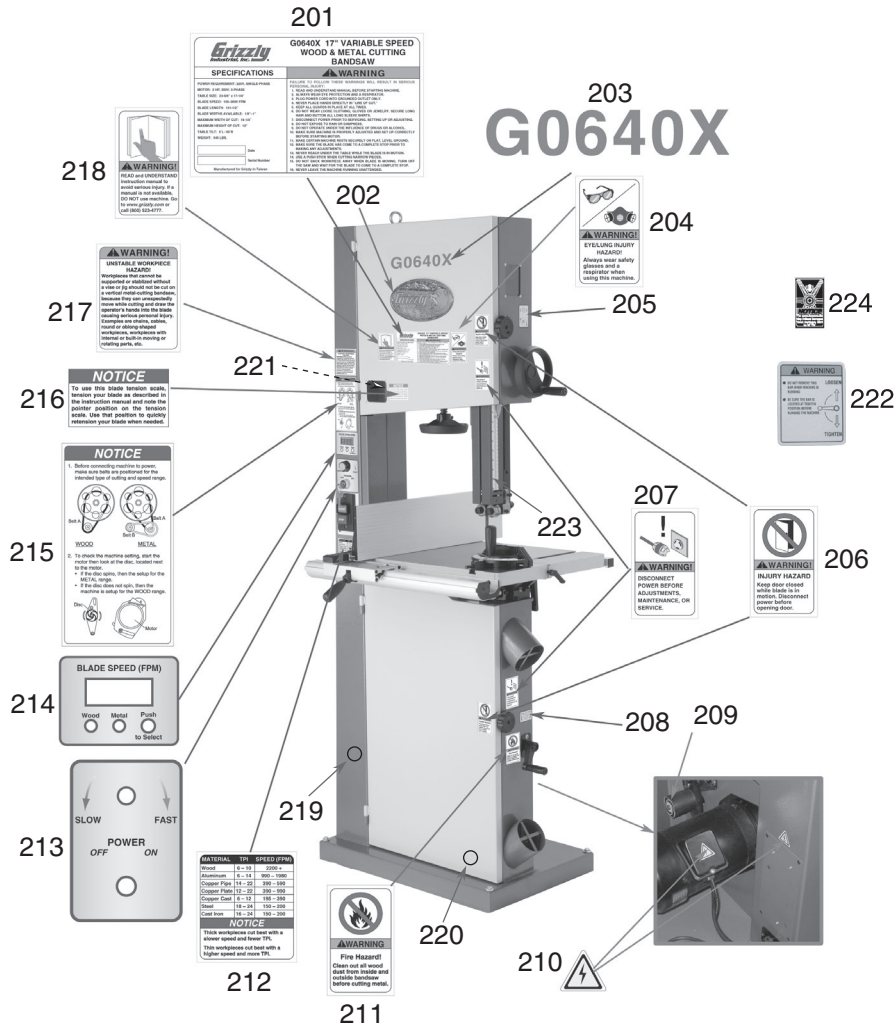
Parts List

REF	PART #	DESCRIPTION
156	PB32M	HEX BOLT M10-1.5 X 25
157	PSS02M	SET SCREW M6-1 X 6
158	P0640X158	HANDWHEEL
159	PFS11M	FLANGE SCREW M6-1 X 10
160	P0640X160	FIXED PLATE
161	P0640X161	SELF-LUBRICATED BUSHING
162	P0640X162	ADJUSTING BOLT
163	PSBS22M	BUTTON HD CAP SCR M8-1.25 X 20
164	PSB84M	CAP SCREW M10-1.5 X 35
165	P0640X165	SHAFT BOLT
166	P0640X166	ADJUSTING STAND
167	PSB01M	CAP SCREW M6-1 X 16
168	PLW03M	LOCK WASHER 6MM
169	PW03M	FLAT WASHER 6MM
170	P0640X170	FIXED STAND
171	P0640X171	SPACER
172	PW01M	FLAT WASHER 8MM
173	P0640X173	CAST IRON TRUNNION ASSEMBLY
173-1	PW01M	FLAT WASHER 8MM
173-2	PLN04M	LOCK NUT M8-1.25
173-3	PCB10M	CARRIAGE BOLT M8-1.25 X 85
173-4	P0640X173-4	UPPER TRUNNION
173-5	PCB23M	CARRIAGE BOLT M8-1.25 X 80
173-6	P0640X173-6	LOCK HANDLE M8-1.25
173-7	P0640X173-7	ANGLE LABEL
173-8	PW01M	FLAT WASHER 8MM
173-9	PB07M	HEX BOLT M8-1.25 X 25
173-10	PW05M	FLAT WASHER 4MM
173-11	P0640X173-11	POINTER
173-12	PS17M	PHLP HD SCR M4-.7 X 6

REF	PART #	DESCRIPTION
173-13	P0640X173-13	ADJUST BOLT M6-1
173-14	PN01M	HEX NUT M6-1
173-15	P0640X173-15	ADJUST PLATE
173-16	PFH01M	FLAT HD SCR M5-.8 X 15
173-17	PSB01M	CAP SCREW M6-1 X 16
173-18	PSB37M	CAP SCREW M6-1 X 50
173-19	P0640X173-19	TRUNNION SUPPORT BRACKET
173-20	PSBS19M	BUTTON HD CAP SCR M10-1.5 X 30
173-21	P0640X173-21	RIGHT COVER
173-22	P6000	BALL BEARING 6000ZZ
173-23	PW04M	FLAT WASHER 10MM
173-24	P0640X173-24	LEFT COVER
173-25	P0640X173-25	ADJUST BLOCK
173-27	PSB97M	CAP SCREW M5-.8 X 6
173-28	PS17M	PHLP HD SCR M4-.7 X 6
173-29	P0640X173-29	TRUNNION RACK
173-30	P0640X173-30	TRUNNION PINION
173-31	PW01M	FLAT WASHER 8MM
173-32	PLN04M	LOCK NUT M8-1.25
173-33	PW06M	FLAT WASHER 12MM
173-34	P0640X173-34	TABLE TILT HANDLE
174	PSB72M	CAP SCREW M10-1.5 X 30
175	PLW06M	LOCK WASHER 10MM
176	PW04M	FLAT WASHER 10MM
177	PSB84M	CAP SCREW M10-1.5 X 35
178	P0640X178	BUSHING
179	P0640X179	ADJUSTABLE LOCK LEVER
180	P0640X180	BEARING STAND PLATE
181	PN03M	HEX NUT M8-1.25
182	P0640X182	HANDLE



Labels



REF	PART #	DESCRIPTION
201	P0640X201	MACHINE ID LABEL
202	G8588	GRIZZLY NAMEPLATE
203	P0640X203	G0640X MODEL # LABEL
204	PLABEL-43	GLASSES RESPIRATOR LABEL
205	P0640X205	GUIDE POST ADJUSTMENT LABEL
206	PLABEL-30	DOOR CLOSED LABEL
207	PLABEL-18	DISCONNECT POWER-BANDSAW LABEL
208	P0640X208	HAND CRANK DIRECTION LABEL
209	P0640X209	SPIRAL INDICATOR LABEL
210	PLABEL-14	ELECTRICITY LABEL
211	P0640X211	FIRE HAZARD LABEL
212	P0640X212	CUTTING SPEEDS LABEL

REF	PART #	DESCRIPTION
213	P0640X213	CONTROLS LABEL
214	P0640X214	SPEED DISPLAY LABEL
215	P0640X215	BELT CHANGE LABEL
216	P0640X216	BLADE TENSION LABEL
217	P0640X217	UNSTABLE WORKPIECE LABEL
218	PLABEL-12A	READ MANUAL LABEL
219	PPAINT-1	"GRIZZLY GREEN" PAINT
220	PPAINT-11	"PUTTY" PAINT
221	P0640X221	BLADE TENSION SCALE LABEL
222	P0640X222	BLADE TENSION LEVER LABEL
223	P0640X223	GUIDE POST SCALE LABEL
224	P0640X224	TENSION ADJUSTMENT LABEL

⚠ WARNING

Safety labels warn about machine hazards and ways to prevent injury. The owner of this machine **MUST** maintain the original location and readability of the labels on the machine. If any label is removed or becomes unreadable, **REPLACE** that label before using the machine again. Contact Grizzly at (800) 523-4777 or www.grizzly.com to order new labels.

