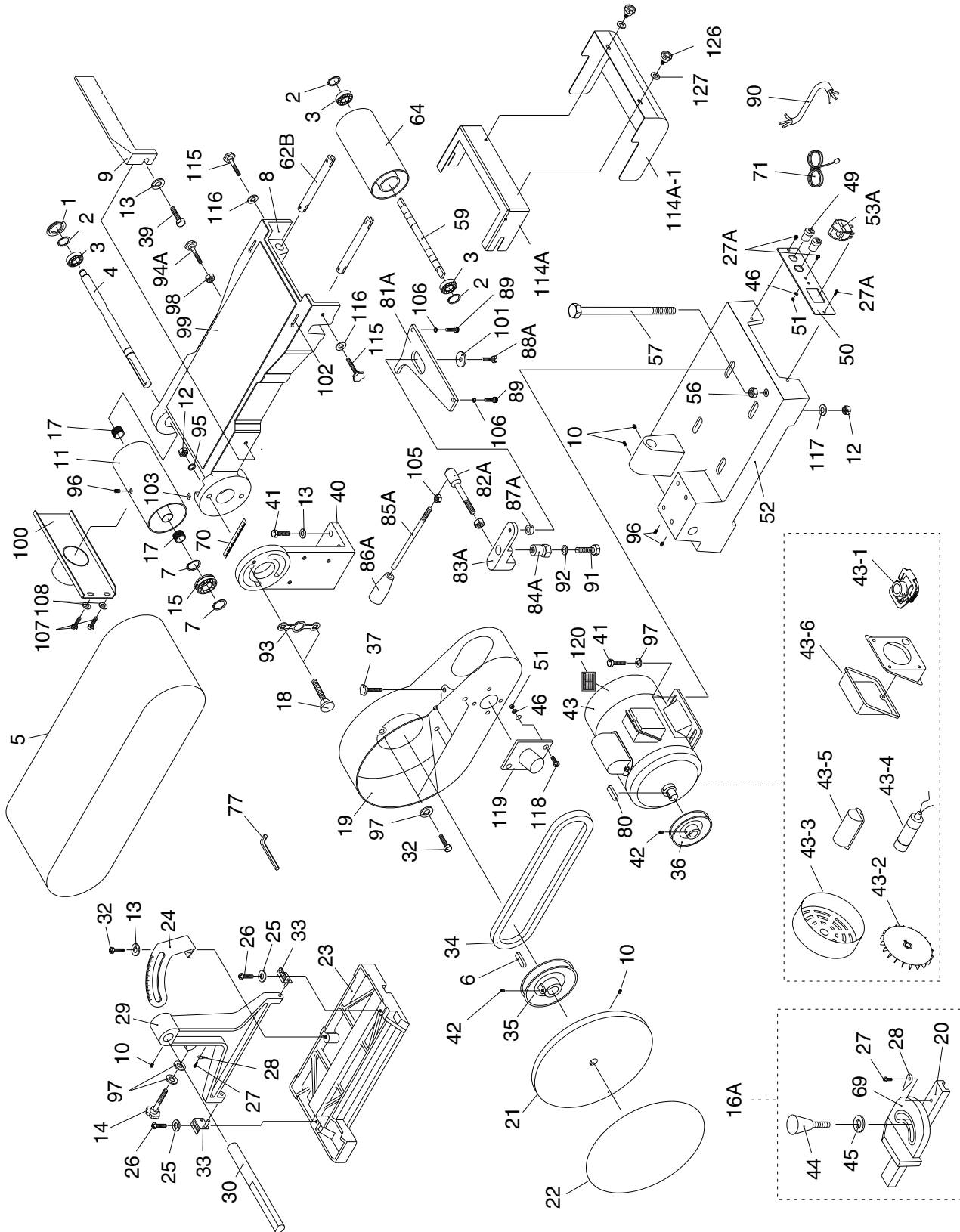


SECTION 9: PARTS

G1014Z Main



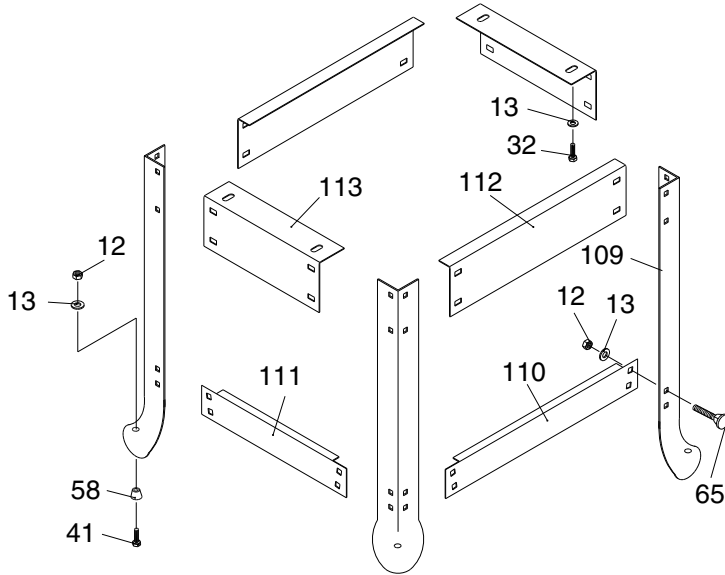
G1014Z Main Parts List

| REF | PART # | DESCRIPTION |
|------|-------------|--------------------------------|
| 1 | P1014Z001 | DUST COVER |
| 2 | PR03M | EXT RETAINING RING 12MM |
| 3 | P6201-2RS | BALL BEARING 6201-2RS |
| 4 | P1014Z004 | DRIVER ROLLER SHAFT |
| 5 | P1014Z005 | SANDING BELT 6" X 48" |
| 6 | PK112M | KEY 5 X 5 X 55 |
| 7 | PR05M | EXT RETAINING RING 15MM |
| 8 | P1014Z008 | SANDING BELT FRAME |
| 9 | P1014Z009 | BACK STOP |
| 10 | PSS02 | SET SCREW 5/16-18 X 3/8 |
| 11 | P1014Z011 | DRIVE ROLLER |
| 12 | PN02 | HEX NUT 5/16-18 |
| 13 | PW07 | FLAT WASHER 5/16 |
| 14 | P1014Z014 | KNOB 5/16-18 |
| 15 | P6202-2RS | BALL BEARING 6202-2RS |
| 16A | P1014Z016A | COMPLETE MITER GAUGE ASSY |
| 17 | P1014Z017 | BUSHING 15 X 19.4 X 12MM |
| 18 | PCB08 | CARRIAGE BOLT 5/16-18 X 1-1/2 |
| 19 | P1014019A | PULLEY COVER V2.07.00 |
| 20 | P1014Z020 | MITER BAR |
| 21 | P1014021 | CAST IRON DISC V2.02.97 |
| 22 | P1014Z022 | SANDING DISC PAPER 9" |
| 23 | P1014Z023 | TABLE |
| 24 | P1014Z024 | TRUNNION |
| 25 | PW06 | FLAT WASHER 1/4 |
| 26 | PS04 | PHLP HD SCR 1/4-20 X 1/2 |
| 27 | PS06 | PHLP HD SCR 10-24 X 3/8 |
| 27A | PFS03 | FLANGE SCREW 10-24 X 3/8 |
| 28 | P1014Z028 | POINTER |
| 29 | P1014029 | TABLE SUPPORT BRACKET V2.01.98 |
| 30 | P1014Z030 | SUPPORT BAR |
| 32 | PB09 | HEX BOLT 5/16-18 X 1/2 |
| 33 | P1014Z033 | TABLE MOUNT |
| 34 | PVM24 | V-BELT M-24 3L240 |
| 35 | P1014Z035 | PULLEY |
| 36 | P1014Z036 | MOTOR PULLEY |
| 37 | P1014Z037 | KNOB 10-24 |
| 39 | PB03 | HEX BOLT 5/16-18 X 1 |
| 40 | P1014040 | BRACKET |
| 41 | PB03 | HEX BOLT 5/16-18 X 1 |
| 42 | PSS02 | SET SCREW 5/16-18 X 3/8 |
| 43 | P1014Z043 | MOTOR 3/4 HP 110V/220V 1-PH |
| 43-1 | P1014Z043-1 | CENTRIFUGAL SWITCH |
| 43-2 | P1014Z043-2 | MOTOR FAN |
| 43-3 | P1014Z043-3 | MOTOR FAN COVER |
| 43-4 | P1014Z043-4 | S CAP 200M 125V 1-3/8 x 2-1/4 |
| 43-5 | P1014Z043-5 | S CAPACITOR COVER |
| 43-6 | P1014Z043-6 | JUNCTION BOX COVER |
| 44 | P1014Z044 | LOCK KNOB 1/4-20 X 5/8 |
| 45 | P1014Z045 | PLASTIC WASHER 1/4-16 |
| 46 | PW03 | FLAT WASHER #10 |
| 49 | P1014Z049 | STRAIN RELIEF |

| REF | PART # | DESCRIPTION |
|--------|--------------|------------------------------|
| 50 | P1014Z050 | SWITCH PLATE |
| 51 | PN07 | HEX NUT 10-24 |
| 52 | P1014Z052 | BASE |
| 53A | G8988 | GRIZZLY SAFETY PADDLE SWITCH |
| 56 | PN04 | HEX NUT 5/8-11 |
| 57 | P1014Z057 | HEX BOLT 5/8-11 X 9 |
| 59 | P1014059B | IDLER SHAFT V3.08.97 |
| 62B | P1014Z062B | ROLLER ADJUST BAR |
| 64 | P1014064B | IDLER ROLLER V3.08.97 |
| 69 | P1014Z069 | MITER BODY |
| 70 | P1014Z070 | TILT SCALE |
| 71 | PWRCRD110L | POWER CORD |
| 77 | PAW04M | HEX WRENCH 4MM |
| 80 | PK02M | KEY 5 X 5 X 40 |
| 81A | P1014Z081A | ROCKER PLATE |
| 82A | P1014Z082A | SHORT LEVER |
| 83A | P1014Z083A | ROCKER ARM |
| 84A | P1014Z084A | ECCENTRIC |
| 85A | P1014Z085A | LONG LEVER |
| 86A | P1014Z086A | KNOB 3/8-16 |
| 87A | P1014Z087A | SPACER |
| 88A | PB21 | HEX BOLT 3/8-16 X 3/4 |
| 89 | PSB31 | CAP SCREW 10-24 X 5/8 |
| 90 | P1014Z090 | MOTOR CORD 16AWG x 3C |
| 91 | PB16 | HEX BOLT 3/8-16 X 1-1/2 |
| 92 | PW02 | FLAT WASHER 3/8 |
| 93 | P1014Z093 | WASHER PLATE 19 X 88 |
| 94A | P1014Z094A | KNOB 3/8-24 |
| 95 | PLW01 | LOCK WASHER 5/16 |
| 96 | PSS18 | SET SCREW 5/16-18 X 3/4 |
| 97 | P1014Z097 | FENDER WASHER 5/16 X 21 X 2 |
| 98 | PN08 | HEX NUT 3/8-16 |
| 99 | P1014Z099 | GRAPHITE PAD 6W X 17L |
| 100 | P1014Z100 | DUST PORT |
| 101 | P1014Z101 | FENDER WASHER 3/8 |
| 102 | P1014Z102 | BELT DIRECTION ARROW |
| 103 | P1014Z103 | TABLE TILT POINTER |
| 105 | PN08 | HEX NUT 3/8-16 |
| 106 | PLW01M | LOCK WASHER 5MM |
| 107 | PB19 | HEX BOLT 1/4-20 X 1/2 |
| 108 | PW06 | FLAT WASHER 1/4 |
| 114A | P1014Z114A | IDLER ROLLER GUARD V2.03.08 |
| 114A-1 | P1014Z114A-1 | SLEEVE GUARD |
| 115 | P1014Z115 | LOCK KNOB 1/4-20 |
| 116 | PW06 | FLAT WASHER 1/4 |
| 117 | PW07 | FLAT WASHER 5/16 |
| 118 | PS06 | PHLP HD SCR 10-24 X 3/8 |
| 119 | G2977 | DUST PORT (ABS) 2-1/2" |
| 120 | P1014Z120 | MOTOR LABEL |
| 126 | P1014Z126 | LOCK KNOB 10-32 |
| 127 | PW03 | FLAT WASHER #10 |

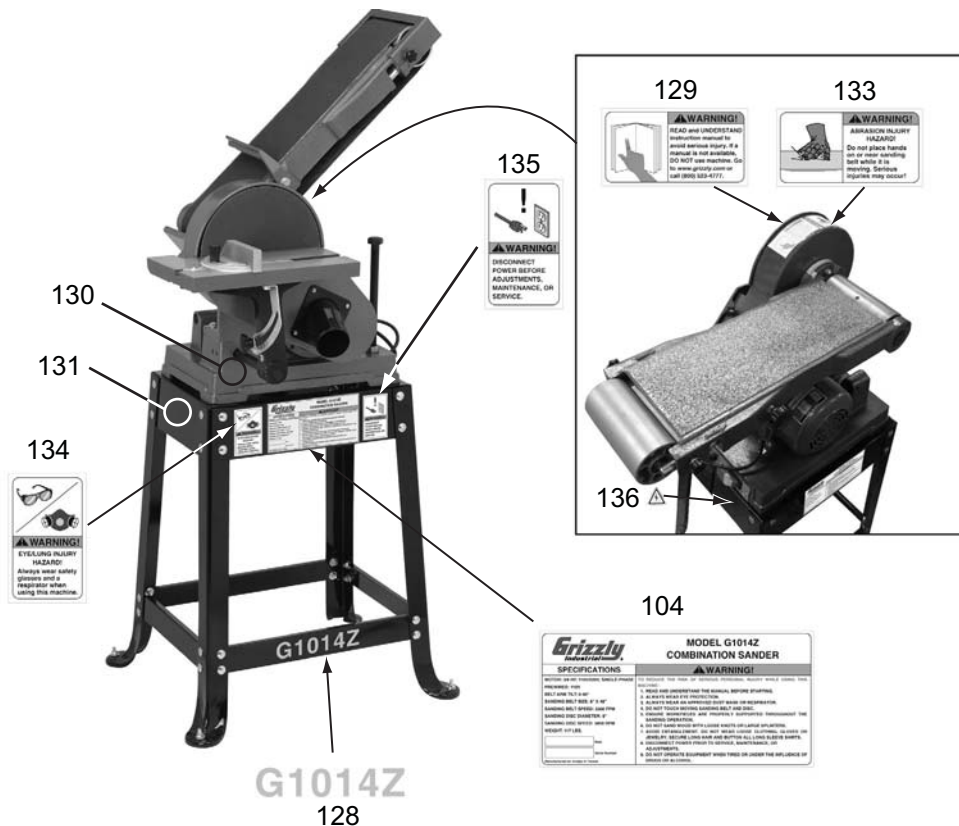


G1014Z Stand



| REF | PART # | DESCRIPTION |
|-----|-----------|-----------------------------|
| 12 | PN02 | HEX NUT 5/16-18 |
| 13 | PW07 | FLAT WASHER 5/16 |
| 32 | PB09 | HEX BOLT 5/16-18 X 1/2 |
| 41 | PB03 | HEX BOLT 5/16-18 X 1 |
| 58 | P1014Z058 | RUBBER FOOT |
| 65 | PCB01 | CARRIAGE BOLT 5/16-18 X 5/8 |
| 109 | P1014Z109 | LEG |
| 110 | P1014Z110 | LONG LOWER BRACE |
| 111 | P1014Z111 | SHORT LOWER BRACE |
| 112 | P1014Z112 | LONG UPPER BRACE |
| 113 | P1014Z113 | SHORT UPPER BRACE |

G1014Z Labels

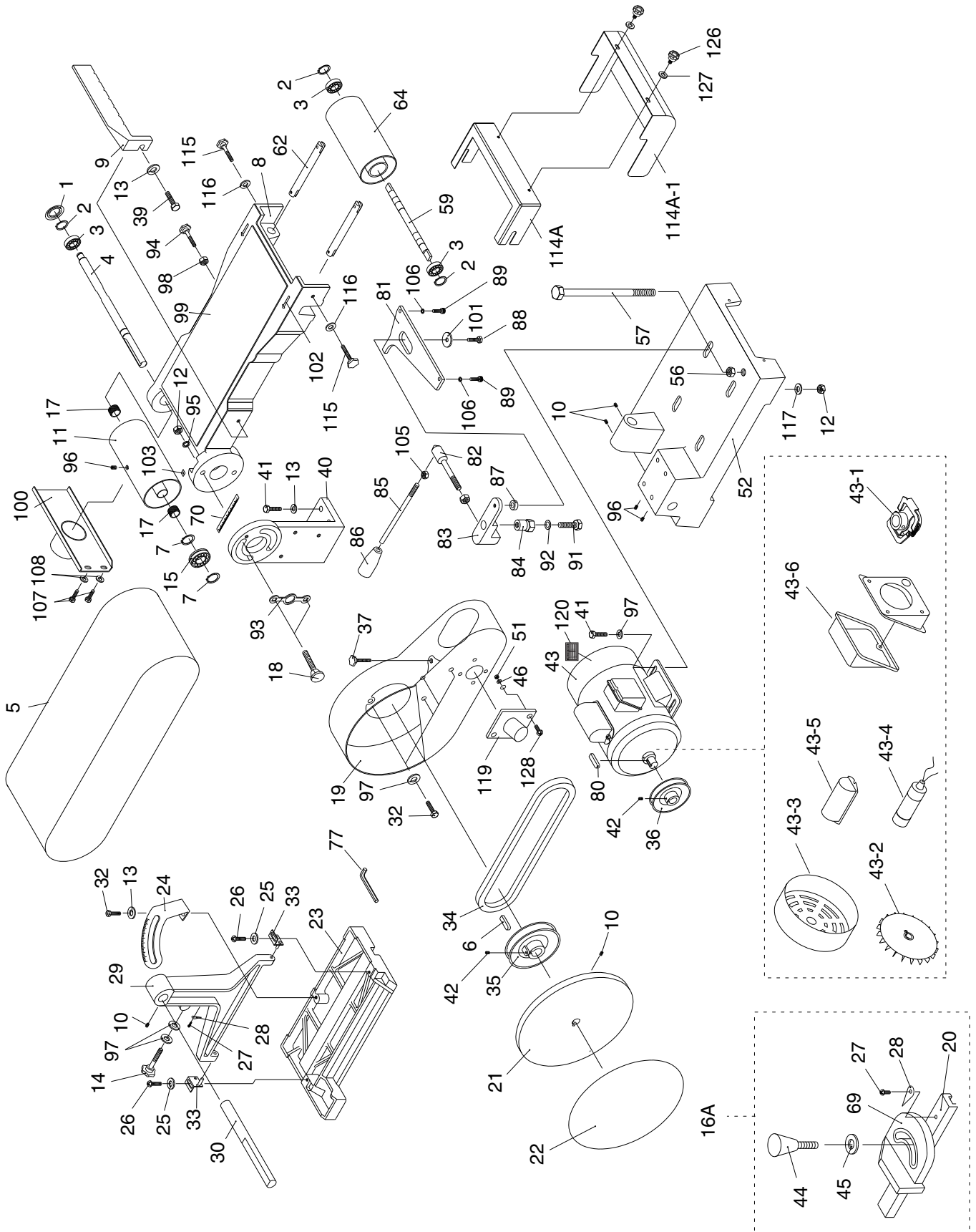


| REF | PART # | DESCRIPTION |
|-----|------------|-------------------------------|
| 104 | P1014Z104 | MACHINE ID LABEL |
| 128 | P1014Z128 | MODEL # LABEL G1014Z |
| 129 | PLABEL-12B | READ MANUAL 3.7W X 2H NS 7/05 |
| 130 | PPAINT-1 | GRIZZLY GREEN TOUCH UP PAINT |
| 131 | PPAINT-7 | BLACK TOUCH UP PAINT |

| REF | PART # | DESCRIPTION |
|-----|------------|------------------------------|
| 133 | P1014Z133 | ABRASION INJURY HAZARD |
| 134 | PLABEL-57 | GLASSES/RESPIRATOR 2W X 3.3H |
| 135 | PLABEL-62 | DISCONNECT 110V 2W X 3.3H |
| 136 | PLABEL-14B | ELECTRICITY LABEL |



G1014ZX Main



G1014ZX Main Parts List

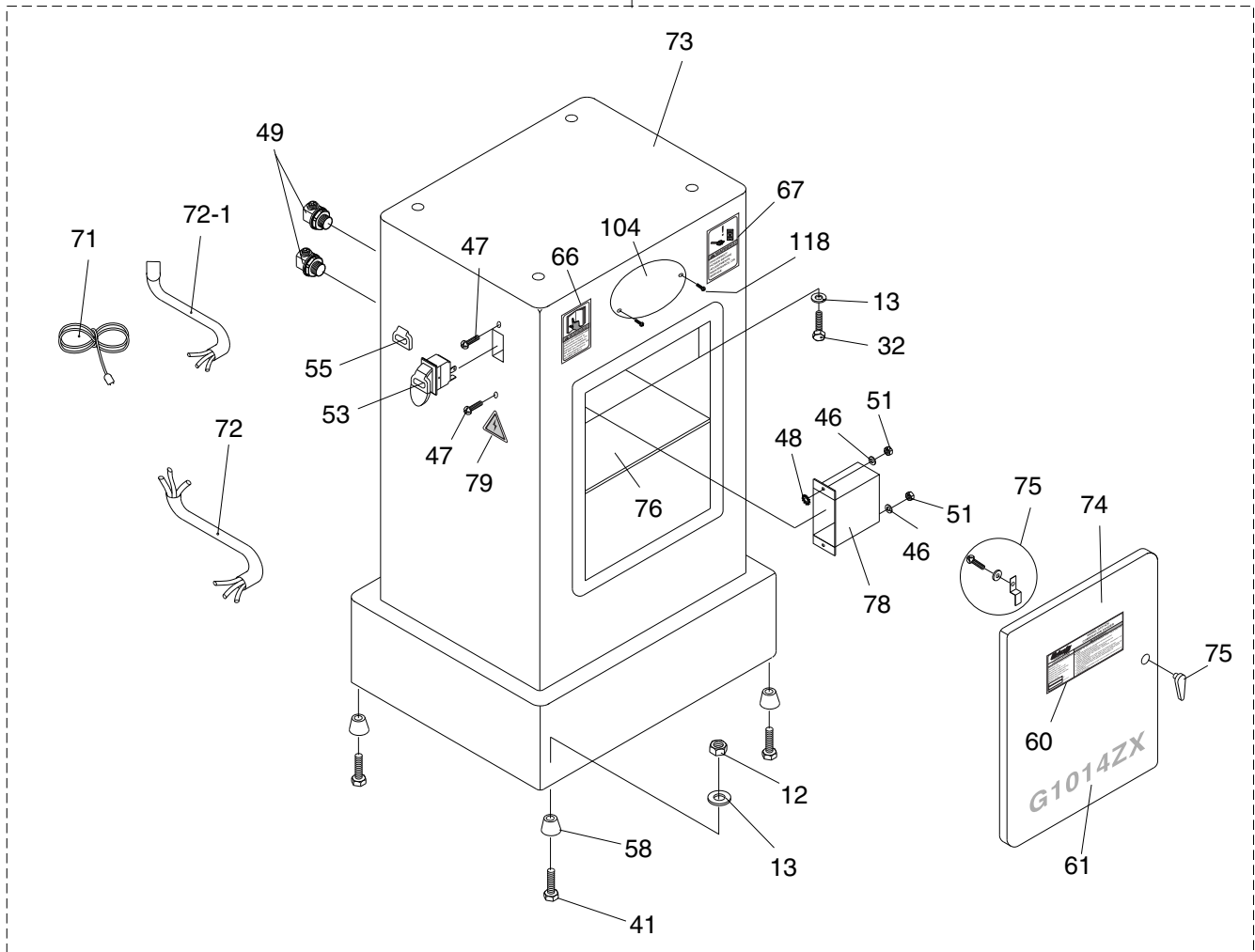
| REF | PART # | DESCRIPTION |
|------|-------------|-------------------------------|
| 1 | P1014Z001 | DUST COVER |
| 2 | PR03M | EXT RETAINING RING 12MM |
| 3 | P6201-2RS | BALL BEARING 6201-2RS |
| 4 | P1014Z004 | DRIVER ROLLER SHAFT |
| 5 | P1014Z005 | SANDING BELT 6" X 48" |
| 6 | PK02M | KEY 5 X 5 X 40 |
| 7 | PR05M | EXT RETAINING RING 15MM |
| 8 | P1014Z008 | SANDING BELT FRAME |
| 9 | P1014Z009 | BACK STOP |
| 10 | PSS02 | SET SCREW 5/16-18 X 3/8 |
| 11 | P1014Z011 | DRIVE ROLLER |
| 12 | PN02 | HEX NUT 5/16-18 |
| 13 | PW07 | FLAT WASHER 5/16 |
| 14 | P1014Z014 | KNOB |
| 15 | P6202-2RS | BALL BEARING 6202-2RS |
| 16A | P1014Z016A | COMPLETE MITER GAUGE ASSY |
| 17 | P1014Z017 | BUSHING 15 X 19.4 X 12MM |
| 18 | PCB08 | CARRIAGE BOLT 5/16-18 X 1-1/2 |
| 19 | P1014019A | PULLEY COVER V2.07.00 |
| 20 | P1014Z020 | MITER BAR |
| 21 | P1014021 | CAST IRON DISC V2.02.97 |
| 22 | P1014Z022 | SANDING DISC PAPER 9" |
| 23 | P1014Z023 | TABLE |
| 24 | P1014Z024 | TRUNNION |
| 25 | PW06 | FLAT WASHER 1/4 |
| 26 | PS04 | PHLP HD SCR 1/4-20 X 1/2 |
| 27 | PS06 | PHLP HD SCR 10-24 X 3/8 |
| 28 | P1014Z028 | MITER GAUGE POINTER |
| 29 | P1014029 | TABLE SUPPT BRACKET V2.01.98 |
| 30 | P1014Z030 | SUPPORT BAR |
| 32 | PB09 | HEX BOLT 5/16-18 X 1/2 |
| 33 | P1014Z033 | TABLE MOUNT |
| 34 | PVM24 | V-BELT M-24 3L240 (QTY 1) |
| 35 | P1014Z035 | PULLEY |
| 36 | P1014Z036 | MOTOR PULLEY |
| 37 | P1014Z037 | KNOB |
| 39 | PB03 | HEX BOLT 5/16-18 X 1 |
| 40 | P1014040 | BRACKET |
| 41 | PB03 | HEX BOLT 5/16-18 X 1 |
| 42 | PSS02 | SET SCREW 5/16-18 X 3/8 |
| 43 | P1014Z043 | MOTOR 3/4 HP 110V/220V 1-PH |
| 43-1 | P1014Z043-1 | CENTRIFUGAL SWITCH |
| 43-2 | P1014Z043-2 | MOTOR FAN |
| 43-3 | P1014Z043-3 | MOTOR FAN COVER |
| 43-4 | P1014Z043-4 | S CAP 200M 125V 1-3/8 x 2-1/4 |
| 43-5 | P1014Z043-5 | S CAPACITOR COVER |
| 43-6 | P1014Z043-6 | JUNCTION BOX COVER |
| 44 | P1014Z044 | LOCK KNOB 1/4-20 X 5/8 |
| 45 | P1014Z045 | PLASTIC WASHER 1/4-16 |

| REF | PART # | DESCRIPTION |
|--------|--------------|-----------------------------|
| 46 | PW03 | FLAT WASHER #10 |
| 51 | PN07 | HEX NUT 10-24 |
| 52 | P1014Z052 | BASE |
| 56 | PN04 | HEX NUT 5/8-11 |
| 57 | P1014Z057 | HEX BOLT 5/8-11 X 9 |
| 59 | P1014059B | IDLER SHAFT V3.08.97 |
| 62 | P1014Z062B | ROLLER ADJ UST BAR |
| 64 | P1014064B | IDLER ROLLER V3.08.97 |
| 69 | P1014Z069 | MITER BODY |
| 70 | P1014Z070 | SCALE |
| 77 | PAW04M | HEX WRENCH 4MM |
| 80 | PK02M | KEY 5 X 5 X 40 |
| 81 | P1014Z081A | ROCKER PLATE |
| 82 | P1014Z082A | LEVER, SHORT |
| 83 | P1014Z083A | ROCKER ARM |
| 84 | P1014Z084A | ECCENTRIC |
| 85 | P1014Z085A | LONG LEVER |
| 86 | P1014Z086A | KNOB 3/8-16 |
| 87 | P1014Z087A | SPACER |
| 88 | PB21 | HEX BOLT 3/8-16 X 3/4 |
| 89 | PSB31 | CAP SCREW 10-24 X 5/8 |
| 91 | PB16 | HEX BOLT 3/8-16 X 1-1/2 |
| 92 | PW02 | FLAT WASHER 3/8 |
| 93 | P1014Z093 | WASHER PLATE 19 X 88 |
| 94 | P1014Z094A | KNOB 3/8-24 |
| 95 | PLW01 | LOCK WASHER 5/16 |
| 96 | PSS18 | SET SCREW 5/16-18 X 3/4 |
| 97 | P1014Z097 | FENDER WASHER 5/16 X 21 X 2 |
| 98 | PN11 | HEX NUT 3/8-24 |
| 99 | P1014Z099 | GRAPHITE PAD 6"W X 17"L |
| 100 | P1014Z100 | DUST PORT |
| 101 | P1014Z101 | FENDER WASHER 3/8" |
| 102 | P1014Z102 | DIRECTION SCALE |
| 103 | P1014Z103 | POINTER |
| 105 | PN08 | HEX NUT 3/8-16 |
| 106 | PLW01M | LOCK WASHER 5MM |
| 107 | PB19 | HEX BOLT 1/4-20 X 1/2 |
| 108 | PW06 | FLAT WASHER 1/4 |
| 114A | P1014Z114A | IDLER ROLLER GUARD V2.03.08 |
| 114A-1 | P1014Z114A-1 | SLEEVE GUARD |
| 115 | P1014Z115 | LOCK KNOB 1/4-20 |
| 116 | PW06 | FLAT WASHER 1/4 |
| 117 | PW07 | FLAT WASHER 5/16 |
| 119 | G2977 | DUST PORT (ABS) 2-1/2" |
| 120 | P1014Z120 | MOTOR LABEL |
| 126 | P1014Z126 | LOCK KNOB 10-32 |
| 127 | PW03 | FLAT WASHER #10 |
| 128 | PS06 | PHLP HD SCR 10-24 X 3/8 |



G1014ZX Cabinet

73A

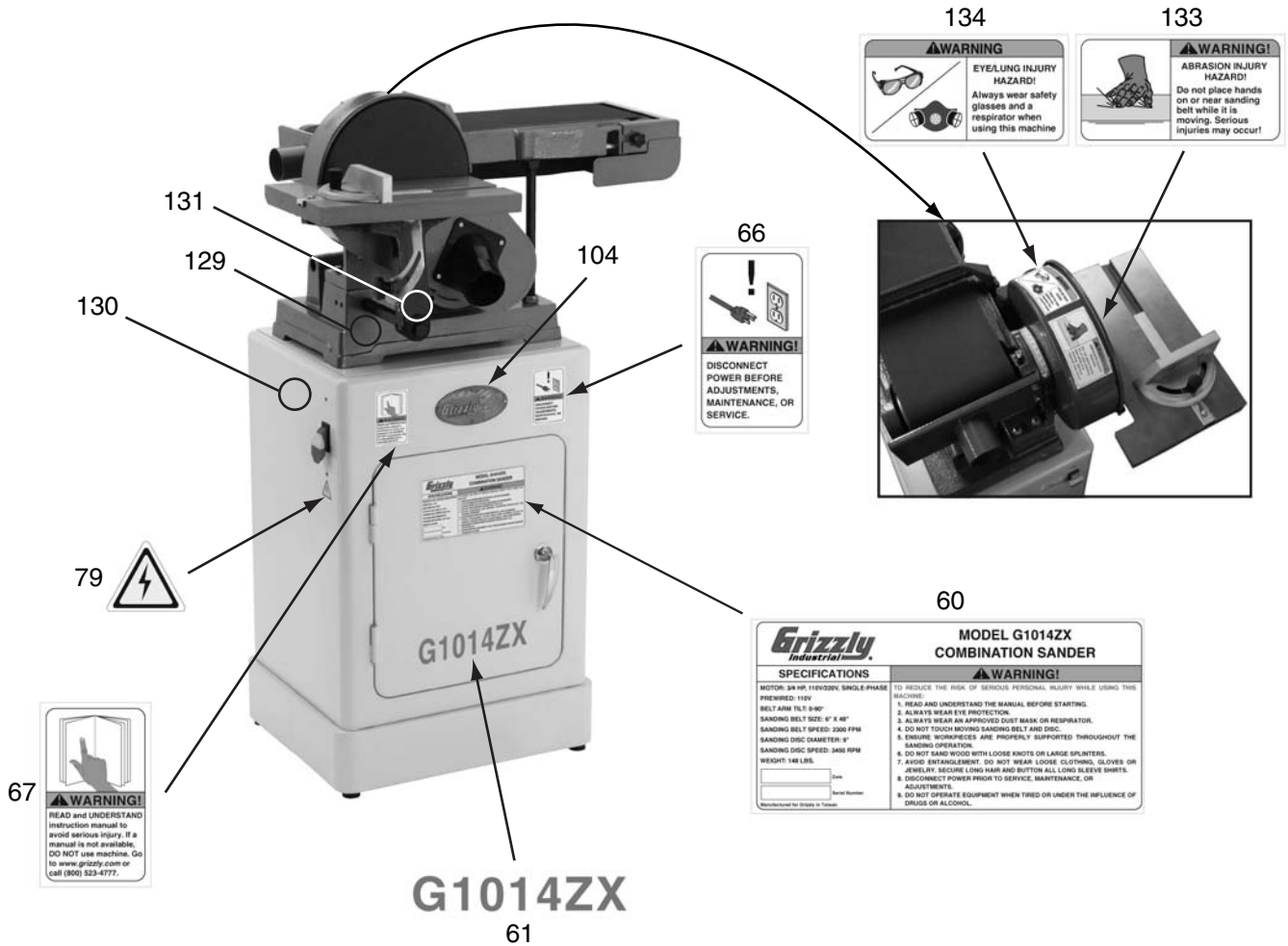


| REF | PART # | DESCRIPTION |
|-----|------------|------------------------------|
| 12 | PN02 | HEX NUT 5/16-18 |
| 13 | PW07 | FLAT WASHER 5/16 |
| 32 | PB09 | HEX BOLT 5/16-18 X 1/2 |
| 41 | PB03 | HEX BOLT 5/16-18 X 1 |
| 46 | PW03 | FLAT WASHER #10 |
| 47 | PFS03 | FLANGE SCREW 10-24 X 3/8 |
| 48 | PTLW01 | EXT TOOTH WASHER #10 |
| 49 | P1014Z049 | STRAIN RELIEF |
| 51 | PN07 | HEX NUT 10-24 |
| 53 | G8988 | GRIZZLY SAFETY PADDLE SWITCH |
| 55 | PSW09-1 | PADDLE SWITCH KEY |
| 58 | P1014Z058 | RUBBER FOOT |
| 60 | P1014ZX060 | MACHINE ID LABEL |
| 61 | P1014ZX061 | MODEL # LABEL G1014ZX |

| REF | PART # | DESCRIPTION |
|------|--------------|-----------------------------|
| 66 | PLABEL-62 | DISCONNECT 110V 2W X 3.3H |
| 67 | PLABEL-12A | READ MANUAL V2.07.05 |
| 71 | PWRCRD110L | POWER CORD |
| 72 | P1014ZX072 | MOTOR CORD 1 (FEMALE) |
| 72-1 | P1014ZX072-1 | MOTOR CORD 2 (MALE) |
| 73 | P1014ZX073 | CABINET |
| 73A | P1014ZX073A | COMPLETE STAND ASSY (BOX 2) |
| 74 | P1014ZX074 | CABINET DOOR |
| 75 | P1014ZX075 | DOOR LATCH SYSTEM |
| 76 | P1014ZX076 | SHELF |
| 78 | P1014ZX078 | SWITCH HOUSING |
| 79 | PLABEL-14 | ELECTRICITY LABEL |
| 104 | G9987 | GRIZZLY NAMEPLATE- SMALL |
| 118 | PHTEK24 | TAP SCREW #5 X 3/8 |



G1014ZX Labels



G1014ZX

61

| REF PART # | DESCRIPTION |
|------------|-------------------------------------|
| 60 | P1014ZX060 MACHINE ID LABEL |
| 61 | P1014ZX061 MODEL # LABEL G1014ZX |
| 66 | PLABEL-62 DISCONNECT 110V 2W X 3.3H |
| 67 | PLABEL-12A READ MANUAL V2.07.05 |
| 79 | PLABEL-14 ELECTRICITY LABEL |
| 104 | G9987 GRIZZLY NAMEPLATE- SMALL |

| REF PART # | DESCRIPTION |
|------------|--|
| 129 | PPAINT-1 GRIZZLY GREEN TOUCH-UP PAINT |
| 130 | PPAINT-11 GRAY PUTTY TOUCH UP-PAINT |
| 131 | PPAINT-7 BLACK TOUCH UP PAINT |
| 133 | P1014Z133 ABRASION INJURY HAZARD |
| 134 | PLABEL-57 GLASSES/RESPIRATOR 2W X 3.3H |

! WARNING

Safety labels warn about machine hazards and ways to prevent injury. The owner of this machine **MUST** maintain the original location and readability of the labels on the machine. If any label is removed or becomes unreadable, **REPLACE** that label before using the machine again. Contact Grizzly at (800) 523-4777 or www.grizzly.com to order new labels.

