



BUFFING SYSTEM

MODEL G1061/G1061Z

PARTS LIST



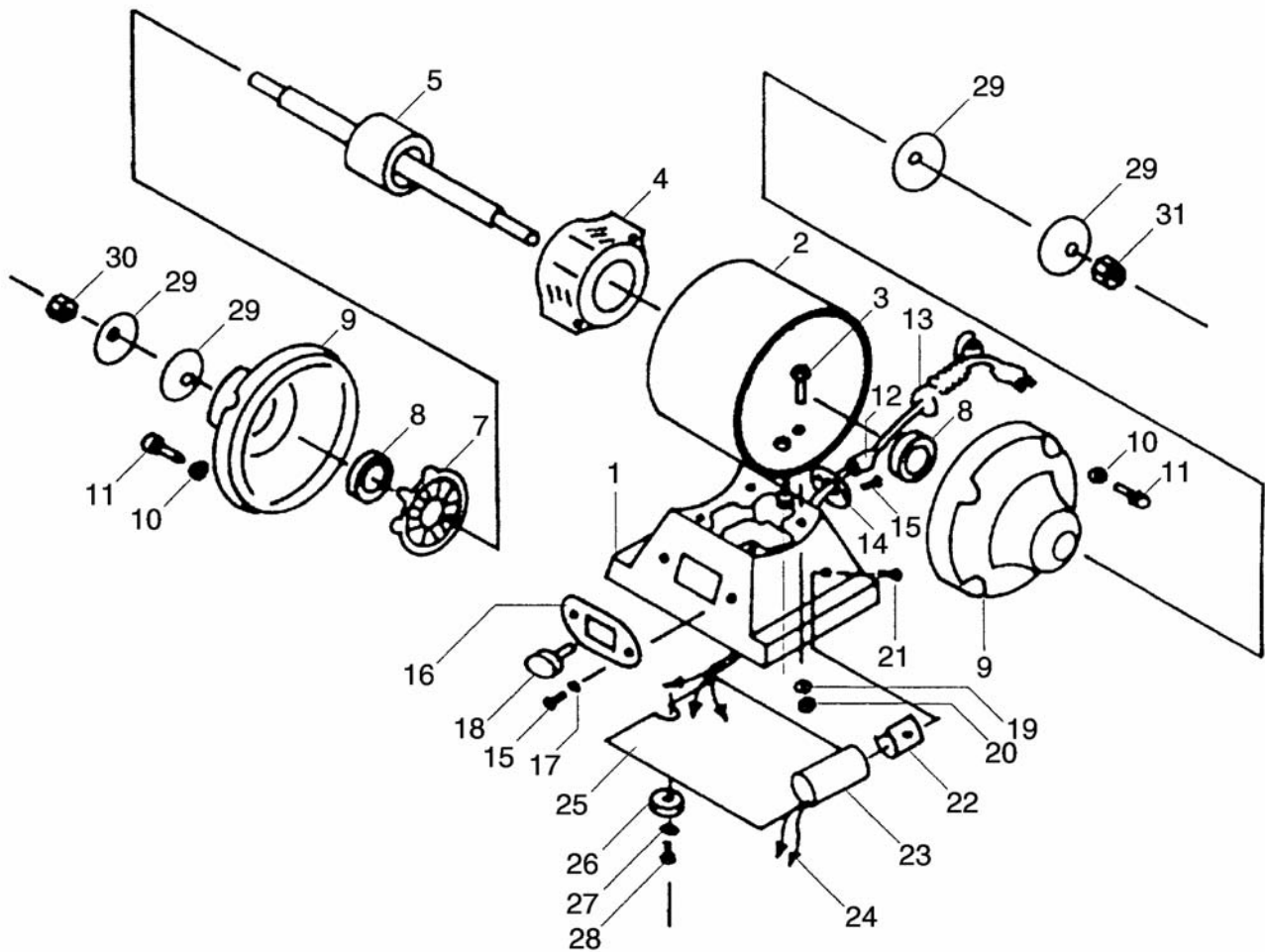
COPYRIGHT © 1992 BY GRIZZLY INDUSTRIAL, INC.

WARNING: NO PORTION OF THIS MANUAL MAY BE REPRODUCED IN ANY SHAPE OR FORM WITHOUT THE WRITTEN APPROVAL OF GRIZZLY INDUSTRIAL, INC.

JANUARY, 2002 PRINTED IN TAIWAN.

PARTS LIST DISCLAIMER

THIS PARTS LIST AND DRAWINGS REPRESENT THE CONFIGURATION OF THE MACHINE AS IT IS CURRENTLY BEING SHIPPED. THE MACHINE CONFIGURATION CAN CHANGE AS PRODUCT IMPROVEMENTS ARE INCORPORATED. IF YOU OWN AN EARLIER VERSION OF THE MACHINE, THIS PARTS LIST MAY NOT DEPICT YOUR MACHINE EXACTLY. CONTACT CUSTOMER SERVICE IF YOU HAVE ANY QUESTIONS ABOUT PART DIFFERENCES. PREVIOUS PARTS LIST VERSIONS ARE NOT AVAILABLE ONLINE.



Ref#	Part#	Description
001	P1061001	MOTOR BASE
002	P1061002	MOTOR CASE
003	PFH07	FLAT HD SCR $\frac{5}{16}$ "-18 X $1\frac{1}{4}$ "
004	P1061004	STATOR (G1061)
004	P1061Z004	STATOR (G1061Z)
005	P1061005	ROTOR W/#6 (G1061)
005	P1061Z005	ROTOR (G1061Z)
007	P1061007	MOTOR FAN
008	P6206	BALL BEARING 6206ZZ
009	P1061009	END BELL
010	PLW02	LOCK WASHER $\frac{1}{4}$ "
011	PS12	PHLP HD SCR $\frac{1}{4}$ -20 X $\frac{5}{8}$ "
012	P1015017	CORD CLAMP
013	P1015019	POWER CORD
014	P1015017-1	STRAIN RELIEF
015	PS01	PHLP HD SCR 10-24 X $\frac{1}{2}$ "

Ref#	Part#	Description
016	P1061016	PANEL SWITCH
017	PLW03	LOCK WASHER $\frac{3}{16}$ "
018	P1061018	ON/OFF SWITCH
019	PLW01	LOCK WASHER $\frac{5}{16}$ "
020	PN02	HEX NUT $\frac{5}{16}$ "-18
021	PHTEK1	SELF TAP PHLP HD SCR
022	P1061022	CLAMP
023	PC400	CAPACITOR
024	P1061024	CLAMP CORD
025	P1061025	FLOOR PLATE
026	P1061026	FOOT WASHER
027	PW03	FLAT WASHER $\frac{3}{16}$ "
028	PS01	PHLP HD SCR 10-24 X $\frac{1}{2}$ "
029	P1061029	WHEEL FLANGE
030	P1061030	LEFT HND HEX NUT
031	P1061031	RIGHT HND HEX NUT