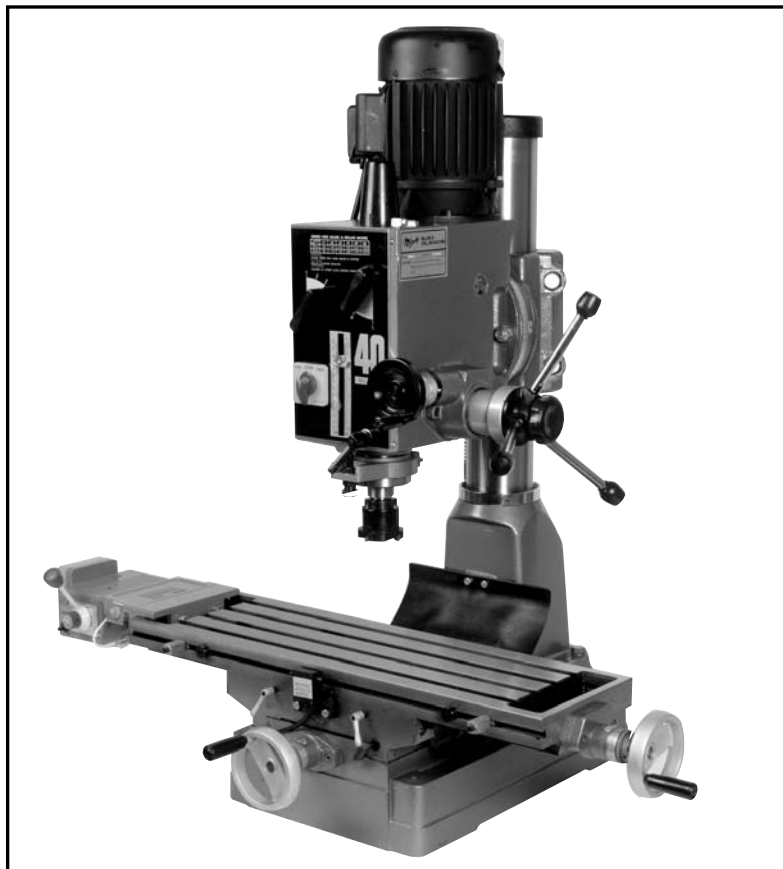




**GEAR HEAD MILL / DRILL
MODEL G1126
PARTS LIST**



COPYRIGHT © 1994 BY GRIZZLY IMPORTS, INC.

**WARNING: NO PORTION OF THIS MANUAL MAY BE REPRODUCED IN ANY
SHAPE OR FORM WITHOUT THE WRITTEN APPROVAL OF GRIZZLY IMPORTS, INC.**

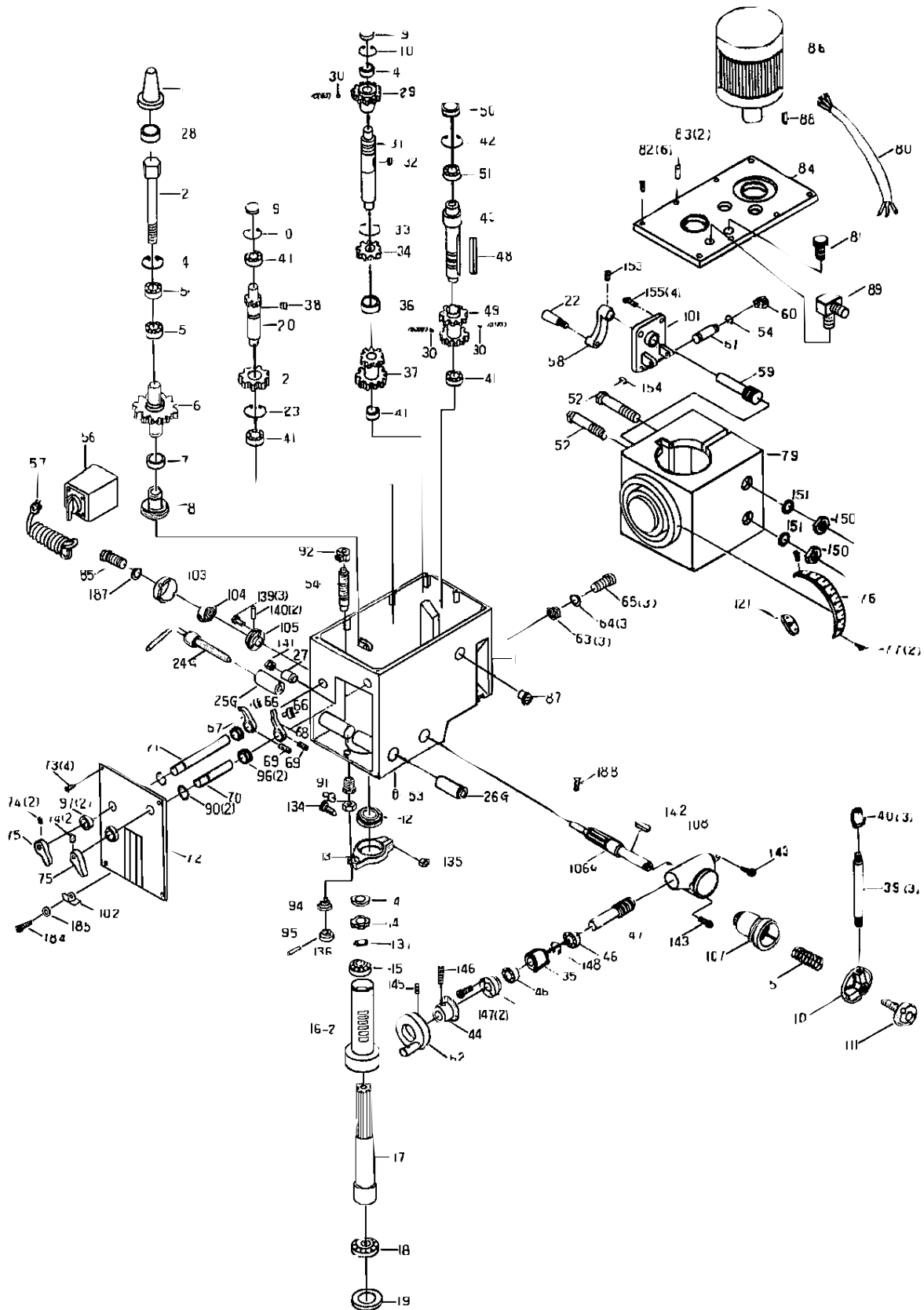
PRINTED IN USA, SEPTEMBER, 1994

PARTS LIST DISCLAIMER

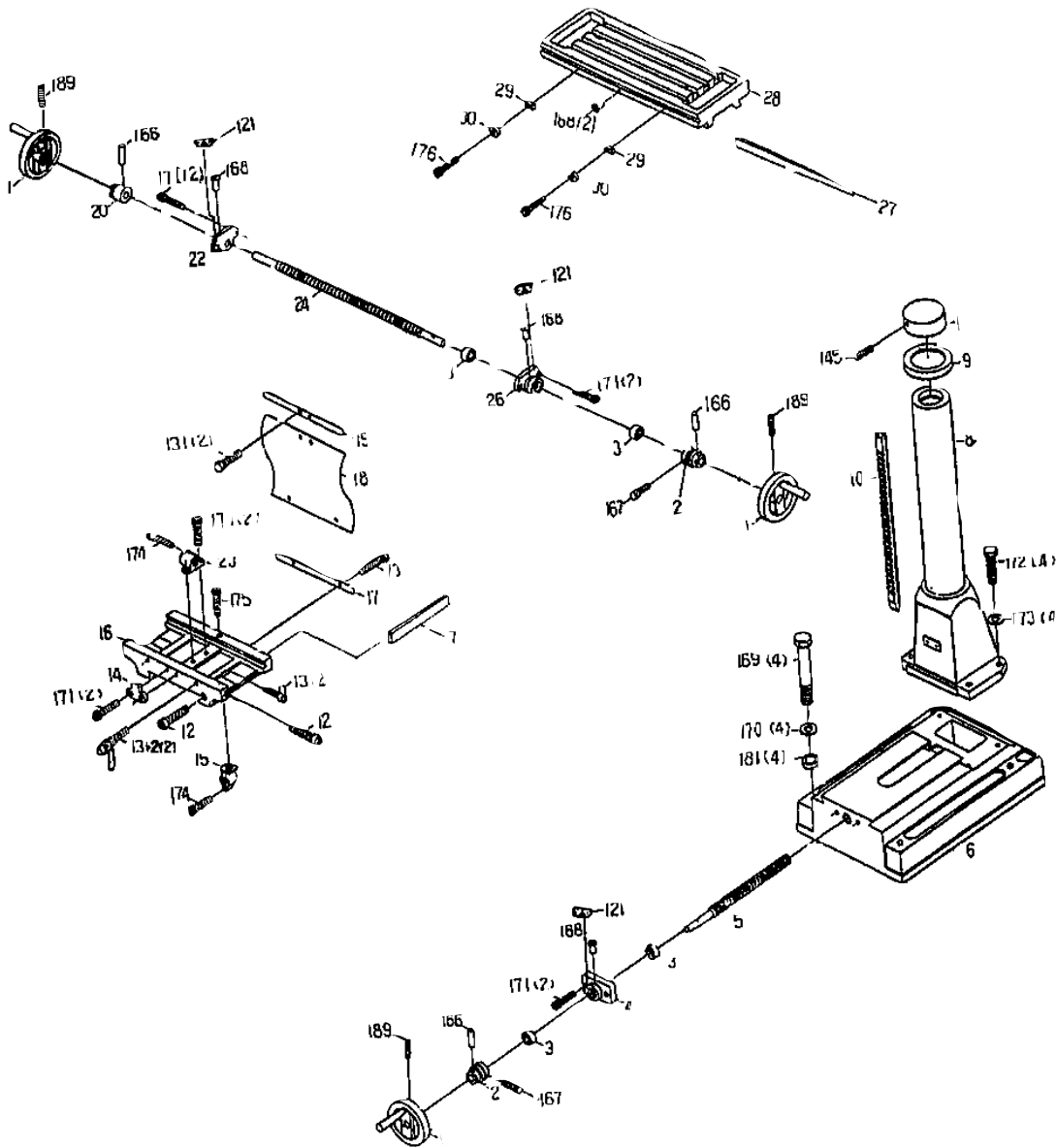
THIS PARTS LIST AND DRAWINGS REPRESENT THE CONFIGURATION OF THE MACHINE AS IT IS CURRENTLY BEING SHIPPED. THE MACHINE CONFIGURATION CAN CHANGE AS PRODUCT IMPROVEMENTS ARE INCORPORATED. IF YOU OWN AN EARLIER VERSION OF THE MACHINE, THIS PARTS LIST MAY NOT DEPICT YOUR MACHINE EXACTLY. CONTACT CUSTOMER SERVICE IF YOU HAVE ANY QUESTIONS ABOUT PART DIFFERENCES. PREVIOUS PARTS LIST VERSIONS ARE NOT AVAILABLE ONLINE.

XV. MODEL G1126 PARTS DIAGRAMS

A. MODEL G1126 MILL / DRILL HEAD PARTS DIAGRAM



B. MODEL G1126 MILL / DRILL TABLE PARTS DIAGRAM



XVI. MODEL G1126 MILL / DRILL PARTS LIST

Ref. #	Qty.	Description	Ref. #	Qty.	Description
1-01	1	Arbor Bolt Cover	1-46	2	Ball Bearing (6202zz)
1-02	1	Arbor Bolt	1-47	1	Worm Shaft
1-04	1	C-Retainer Ring	1-48	2	Key
1-05	2	Ball Bearing (6008zz)	1-49	1	Gear
1-06	1	Spindle Sleeve Gear	1-50	1	Oil Seal
1-07	1	Oil Seal	1-51	1	Ball Bearing (6007zz)
1-08	1	Seal Retainer	1-52	1	Head Body Fix Bolt
1-09	1	Cap	1-53	2	Oil Drain Plug
1-10	1	C-Retainer Ring	1-54	1	Graduated Rod
1-11	1	Head Body	1-56	1	Switch
1-12	2	Rubber Flange	1-57	1	Main Cable
1-13	1	Feed Base	1-58	1	Head Handle
1-14	2	Lock Nuts	1-59	1	Worm Shaft
1-15	1	Taper Roller Bearing (30206j)	1-60	1	Worm
1-16	1	Rack Sleeve	1-61	1	Shaft
1-17	1	Spindle Shaft	1-62	1	Handwheel
1-18	1	Taper Roller Bearing (30207j)	1-63	3	Nuts
1-19	1	Bearing Cap	1-64	3	Spring Washers
1-20	1	Gear Shaft	1-65	3	Bolts
1-21	1	Gear	1-66	2	Lever Bracket
1-22	4	Grip	1-67	1	Lever (Left)
1-23	1	Ring	1-68	1	Lever (Right)
1-24	1	Handle Rod	1-69	2	Screw
1-24	1	Sleeve	1-70	1	Level Shaft (Right)
1-25	1	Fixed Tight Collar	1-71	1	Level Shaft (Left)
1-26	1	Fixed Tight Collar (Thread)	1-72	1	Nameplate
1-27	1	Screw Key	1-73	4	Screw
1-28	1	Oil Seal	1-74	4	Screw
1-29	1	Gear	1-75	2	Speed Lever
1-30	3	Spring and Ball	1-76	1	Degree Meter
1-31	1	Gear Shaft	1-77	2	Rivet
1-32	1	Key	1-79	1	Torraise and Lower Body
1-33	1	Ring	1-80	1	Motor Cable
1-34	1	Gear	1-81	2	Oil Filler Plug
1-35	1	Bearing Spacer	1-82	6	Bolt
1-36	1	Sleeve	1-83	2	Pin
1-37	1	Gear	1-84	1	Head Body Cover
1-38	1	Key	1-85	1	Screw with Plum Knob
1-39	3	Handle Rod	1-86	1	Motor
1-40	3	Knob	1-87	1	Fluid Level Indicator
1-41	5	Ball Bearing (6202zz)	1-89	1	Radiator
1-42	1	Inner Ring	1-90	2	C-Ring
1-43	1	Shaft	1-91	1	Set Distance Nut
1-44	1	Micro Adjusting Indicator	1-92	1	Set Position Block
1-45	1	Worm Cover	1-93	1	Lock Nut

Ref. #	Qty.	Description	Ref. #	Qty.	Description
1-94	1	Support Base	2-10	1	Rack
1-95	1	Handle	2-11	1	Column Head
1-96	2	Oil Seal	2-12	2	Gib Strip Bolt
1-101	1	Raise Head Bracket	2-13	2	Leaf Screw
1-102	4	Limit Plate	2-13-2	2	Knob
1-103	1	Spring Cover	2-14	1	Moveable Fixed Block
1-104	1	Spring	2-15	1	Table Base Nut
1-105	1	Spring Base	2-16	1	Center Base
1-106	1	Pinion Shaft	2-17	1	Anti-dust Plate
1-107	1	Worm Gear	2-18	1	Anti-dust Plate
1-108	1	Feed Cover	2-19	1	Anti-dust Plate
1-110	1	Spring Base	2-20	1	Table Clutch
1-111	1	Lock Bolt With Knob	2-22	1	Left Flange
1-115	1	Spring	2-23	1	Table Nut
1-134	1	Hex Head Bolt	2-24	1	Table Screw
1-135	1	Hex Nut	2-26	1	Right Flange
1-136	1	Spring Pin	2-27	1	Gib Strip
1-137	1	Lockwasher	2-28	1	Table
1-139	3	Round Head Screw	2-29	2	Fixed Block
1-140	2	Spring Pin	2-30	2	Moveable Fixed Ring
1-141	1	Hex Nut	2-31	1	Stand (Option)
1-142	1	Key	2-37	1	Base Screw Collar
1-143	2	Hex Socket Head Screw	2-121	4	Meter Indicator
1-145	3	Hex Socket Headless Screw	2-131	4	Hex Head Bolt
1-146	1	Hex Socket Headless Screw	2-132	10	Washer
1-147	2	Hex Socket Head Screw	2-143	10	Hex Socket Head Screw
1-148	1	C-Retainer Ring	2-145	1	Hexagon
1-153	1	Hex Socket Headless Screw	2-166	3	Spring Pin
1-154	2	C-Retainer Ring	2-167	2	Indicated Zero With Screw
1-155	4	Hex Socket Head Screw	2-168	5	Oil Ball
1-156	1	Rod	2-169	4	Hex Head Bolt
1-157	1	Retainer	2-170	4	Washer
1-158	1	Knob	2-171	10	Hex Socket Head Screw
1-184	1	Screw	2-172	4	Socket Head Bolt
1-185	1	Washer	2-173	4	Spring Washer
1-187	1	Washer	2-174	2	Hex Socket Head Screw
1-188	1	Round Head Screw	2-175	1	Hex Socket Head Screw
Table Base Parts			2-176	2	Hex Socket Head Screw
2-01	3	Table Handle Wheel	2-177	1	Door Duckle
2-02	2	Dial Clutch	2-178	10	Round Head Screw
2-03	4	Thrust Bearings (S1103)	2-179	2	Hex Head Bolt
2-04	1	Square Flange	2-180	2	Washer
2-05	1	Table Screw	2-181	4	Washer
2-06	1	Base	2-183	2	Round Head Screw
2-07	1	Gib Strip	2-189	3	Hex Socket Headless Screw
2-08	1	Column Base			
2-09	1	Column Base Ring			