



ANGLE FINISH NAILER

MODEL G3690

PARTS LIST



COPYRIGHT © 1995 BY GRIZZLY IMPORTS, INC.

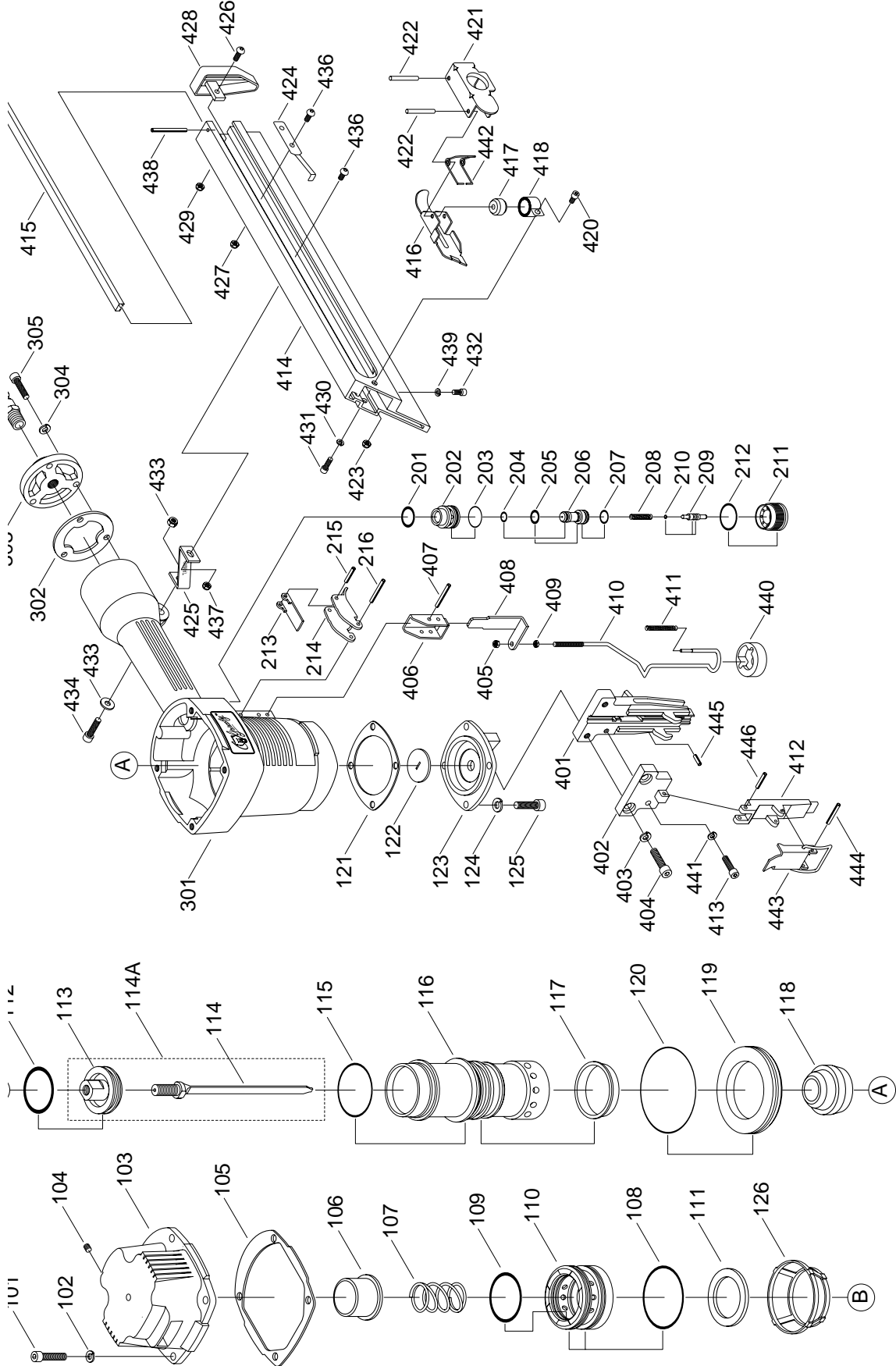
WARNING: NO PORTION OF THIS MANUAL MAY BE REPRODUCED IN ANY SHAPE OR FORM WITHOUT THE WRITTEN APPROVAL OF GRIZZLY IMPORTS, INC.

MARCH, 1995. PRINTED IN USA

DISCONTINUED MACHINE PARTS LIST DISCLAIMER

THESE PARTS REPRESENT THE LAST CONFIGURATION OF THE MACHINE BEFORE IT WAS DISCONTINUED. MACHINE CONFIGURATIONS MAY HAVE CHANGED AS PRODUCT IMPROVEMENTS WERE INCORPORATED. IF YOU OWN AN EARLIER VERSION OF THE MACHINE, THIS PARTS LIST MAY NOT EXACTLY DEPICT YOUR MACHINE. CONTACT CUSTOMER SERVICE IF YOU HAVE ANY QUESTIONS ABOUT PART DIFFERENCES. PREVIOUS PARTS LIST VERSIONS ARE NOT AVAILABLE ONLINE.

XIV. PARTS DIAGRAM





XV. PARTS LIST

REF#	PART#	DESCRIPTION	REF#	PART#	DESCRIPTION
101	PSB06M	CAP SCREW M6 - 1.0 x 25	305	PSB15M	CAP SCREW M5 - 0.8 x 20
102	PLW03M	LOCK WASHER 6mm	306	G2308	QUICK CONNECT 1/4" NPT
103	P3690101	CAP	401	P3690401	DRIVER GUIDE
104	PSS07M	SETSCREW M5 - 0.8 x 5	402	P3690402	DRIVER GUIDE COVER B
105	P3690105	GASKET	403	PLW03M	LOCK WASHER 6mm
106	P3690106	SEAL	404	PSB06M	CAP SCREW M6 - 1.0 x 25
107	P3690107	SPRING	405	PLN01M	LOCK NUT M4 - 0.7
108	P3690108	O-RING	406	P3690406	SAFETY GUIDE
109	P3690109	O-RING	407	PRP16M	ROLL PIN 3 x 25
110	P3690110	VALVE PISTON	408	P3690408	SAFETY DRIVER
111	P3690111	COLLAR	409	PN04M	HEX NUT M4 - 0.7
112	P3690112	O-RING	410	P3690410	SAFETY
113	P3690113	MAIN PISTON	411	P3690411	SPRING
114	P3690114	DRIVER	412	P3690412	DRIVER GUIDE COVER A
114A	P3690114A	COMPLETE DRIVER UNIT	413	PSB33M	CAP SCREW M5 - 0.8 x 12
115	P3690115	O-RING	414	P3690414	MAGAZINE
116	P3690116	CYLINDER	415	P3690415	STEEL CHANNEL
117	P3690117	CYLINDER RING	416	P3690416	PUSHER
118	P3690118	BUMPER	417	P3690417	NYLON ROLLER
119	P3690119	CYLINDER SPACER	418	P3690418	SPRING
120	P3690120	O-RING	420	PSB03M	CAP SCREW M5 - 0.8 x 8
121	P3690121	GASKET	421	P3690421	PIN EJECT EXTERNAL HANDLE
122	P3690122	DRIVER GUIDE	422	P3690422	STEEL PIN
123	P3690123	BASE	423	PLN02M	LOCK NUT M5 - 0.8
124	PLW03M	LOCK WASHER 6mm	424	P3690424	STOP PLATE
125	PSB02M	CAP SCREW M6 - 1.0 x 20	425	P3690425	MOUNTING BRACKET
126	P3690126	CYLINDER PRESS RING	426	P3690426	BUTTON HD SCRW M4 - 0.7 x 10
201	P3690201	O-RING	427	PLN01M	LOCK NUT M4 - 0.7
202	P3690202	VALVE	428	P3690428	PROTECTING COVER
203	P3690203	O-RING	429	PLN01M	LOCK NUT M4 - 0.7
204	P3690204	O-RING	430	PLW02M	LOCK WASHER 4mm
205	P3690205	O-RING	431	PSB18M	CAP SCREW M4 - 0.7 x 8
206	P3690206	VALVE PLUNGER	432	PSB23M	CAP SCREW M4 - 0.7 x 12
207	P3690207	O-RING	433	PW02M	FLAT WASHER 5mm
208	P3690208	SPRING	434	PSB53M	CAP SCREW M5 - 0.8 x 18
209	P3690209	PLUNGER	435	PLN01M	LOCK NUT M5 - 0.8
210	P3690210	O-RING	436	P3690436	BUTTON HD SCRW M4 - 0.7 x 8
211	P3690211	PLUNGER CAP	437	PLN02M	LOCK NUT M4 - 0.7
212	P3690212	O-RING	438	PRP42M	ROLL PIN 3 x 34
213	P3690213	SECONDARY TRIGGER	439	PLW02M	LOCK WASHER 4mm
214	P3690214	TRIGGER	440	P3690440	RUBBER FOOT
215	PRP02M	ROLL PIN 3 x 16	441	PLW01M	LOCK WASHER 5mm
216	PRP16M	ROLL PIN 3 x 25	442	P3690442	SPRING
301	P3690301	GUN BODY	443	P3690443	LOCK HANDLE UNIT
302	P3690302	GASKET	444	PRP43M	ROLL PIN 3 x 22
303	P3690303	END CAP	445	PRP44M	ROLL PIN 3 x 10
304	PLW01M	LOCK WASHER 5mm	446	PRP02M	ROLL PIN 3 x 16