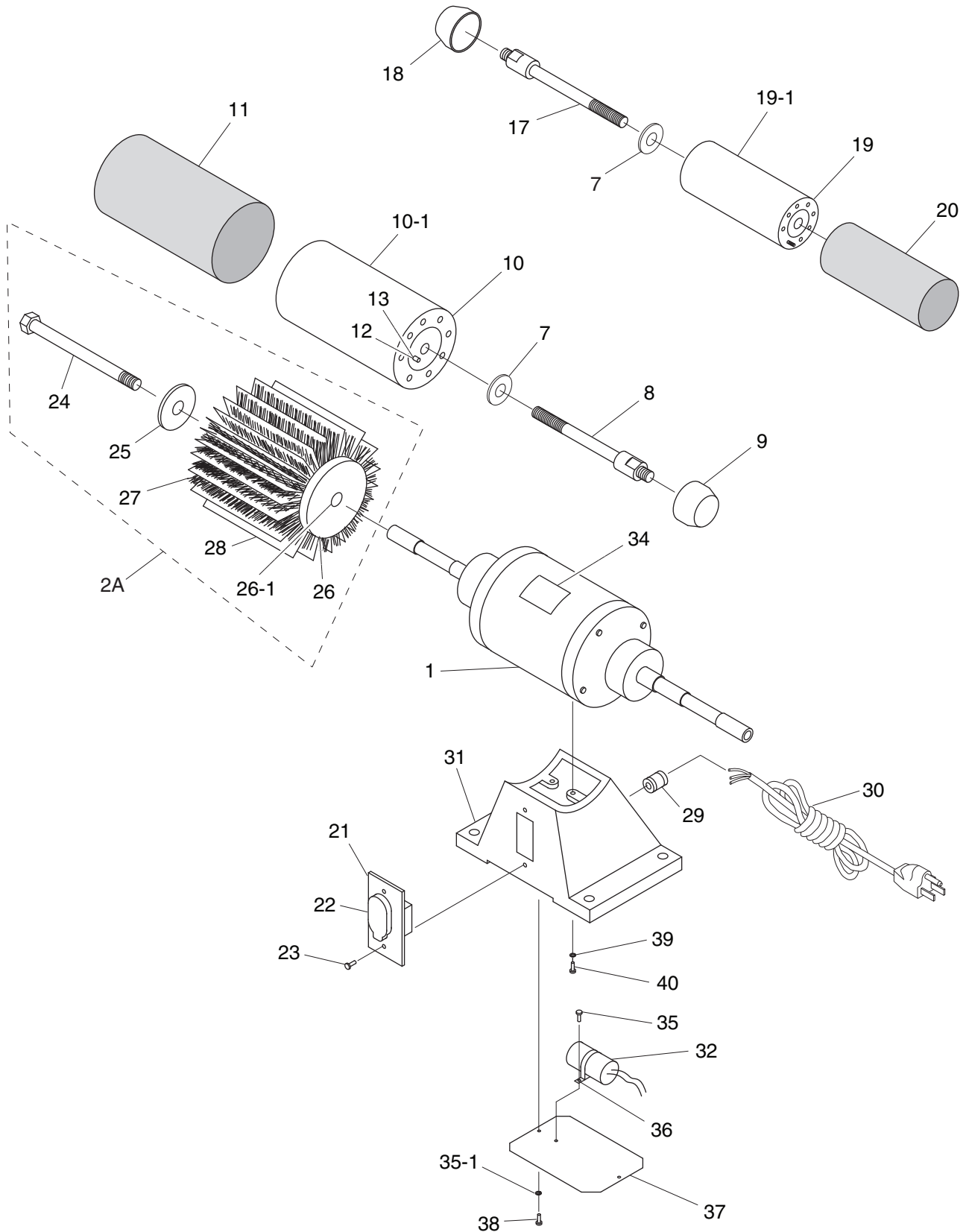


SECTION 9: PARTS

Parts Breakdown



Parts List

| REF | PART # | DESCRIPTION |
|------|------------|-------------------------------|
| 1 | P8749001 | MOTOR 1HP 110V 60HZ |
| 2A | P8749002A | COMPLETE FLAP SANDER ASSY |
| 7 | PW07 | FLAT WASHER 5/16 |
| 8 | P8749008 | ARBOR BOLT RH M12-1.75 X 22 |
| 9 | P8749009 | END CAP RH |
| 10 | P8749010 | SANDING DRUM ASSY 4-3/4 X 8 |
| 10-1 | P8749010-1 | DRUM BLADDER 4-3/4 X 8 |
| 11 | G9211 | SANDING SLEEVE 4-3/4 X 8 120G |
| 12 | P8749012 | AIR VALVE |
| 13 | P8749013 | VALVE CAP |
| 17 | P8749017 | ARBOR BOLT LH M12-1.75 X 22 |
| 18 | P8749018 | END CAP LH |
| 19 | P8749019 | SANDING DRUM ASSY 3-1/4 X 8 |
| 19-1 | P8749019-1 | DRUM BLADDER 3-1/2 X 8 |
| 20 | G9199 | SANDING SLEEVE 3-1/4 X 8 |
| 21 | P8749021 | SWITCH MOUNTING PLATE |
| 22 | PSW06 | PADDLE SWITCH 110V WITH KEY |
| 23 | PS05M | PHLP HD SCR M5-.8 x 8 |

| REF | PART # | DESCRIPTION |
|------|------------|---------------------------------|
| 24 | P8749024 | HEX BOLT M10-1.75 X 134 |
| 25 | P8749025 | FLANGE WASHER 30MM |
| 26 | P8749026 | FLAP SANDER END CAP |
| 26-1 | P8749026-1 | FLAP SANDER SHAFT |
| 27 | P8749027 | BRUSH |
| 28 | P8749028 | SANDPAPER 4-1/2 X 6 |
| 29 | P8749029 | STRAIN RELIEF |
| 30 | PWRCRD100L | POWER CORD 110V W/5-15 PLUG |
| 31 | P8749031 | BASE |
| 32 | P8749032 | S CAPACITOR 400M 125V 3 X 1-3/8 |
| 34 | P8749034 | MACHINE ID LABEL |
| 35 | PS07M | PHLP HD SCR M4-.7 X 8 |
| 35-1 | PW05M | FLAT WASHER 4MM |
| 36 | P8749036 | CAPACITOR BRACKET |
| 37 | P8749037 | COVER PLATE |
| 38 | PS07M | PHLP HD SCR M4-.7 X 8 |
| 39 | PW01M | FLAT WASHER 8MM |
| 40 | PB26M | HEX BOLT M8-1.25 X 30 |

