



3½" PORTABLE PLANER

MODEL G9004

PARTS LIST



COPYRIGHT

©2000 BY GRIZZLY INDUSTRIAL, INC.

1821 VALENCIA ST., BELLINGHAM, WA 98227

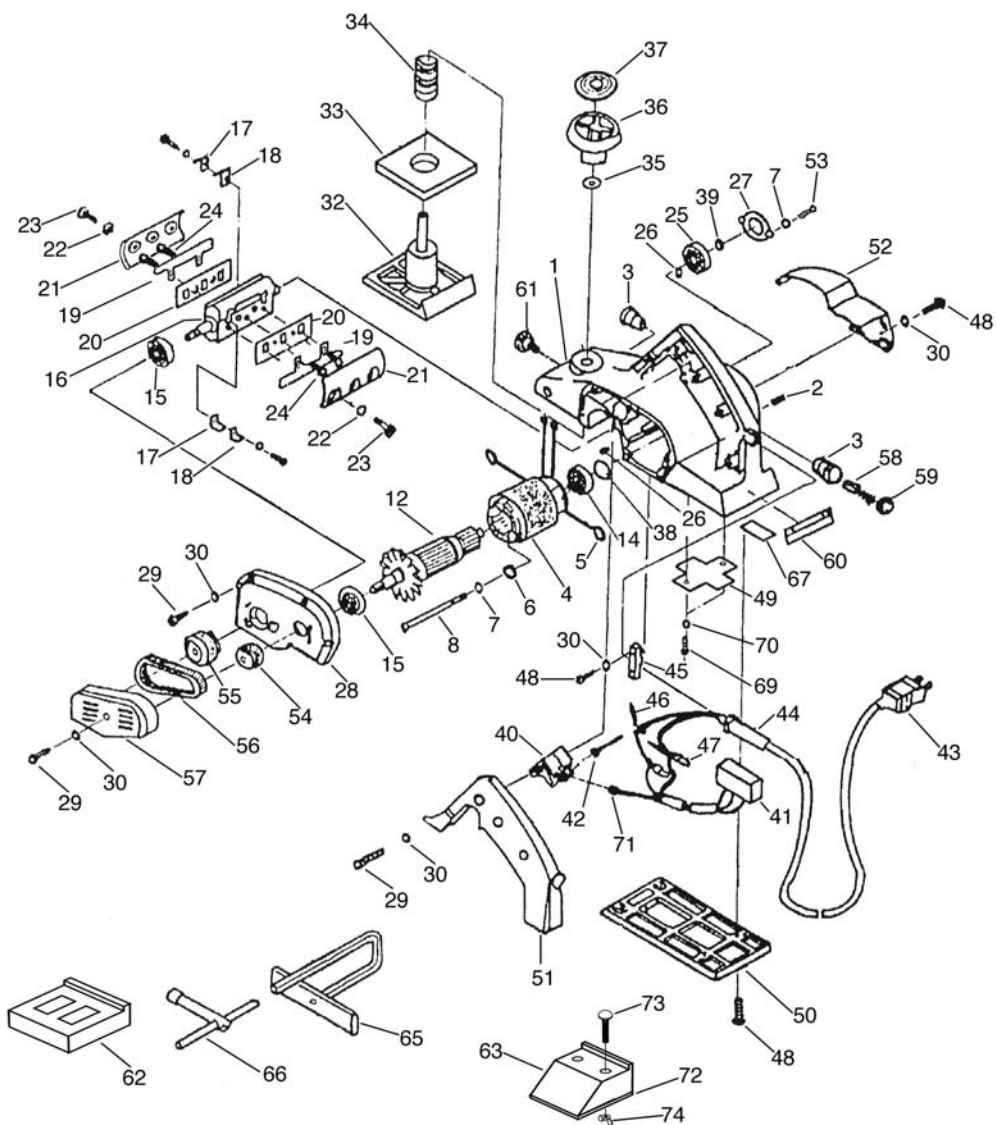
WARNING: NO PORTION OF THIS MANUAL MAY BE REPRODUCED IN ANY SHAPE OR FORM WITHOUT THE WRITTEN APPROVAL OF GRIZZLY INDUSTRIAL, INC.

MARCH, 2000 PRINTED IN U.S.A.

PARTS LIST DISCLAIMER

THIS PARTS LIST AND DRAWINGS REPRESENT THE CONFIGURATION OF THE MACHINE AS IT IS CURRENTLY BEING SHIPPED. THE MACHINE CONFIGURATION CAN CHANGE AS PRODUCT IMPROVEMENTS ARE INCORPORATED. IF YOU OWN AN EARLIER VERSION OF THE MACHINE, THIS PARTS LIST MAY NOT DEPICT YOUR MACHINE EXACTLY. CONTACT CUSTOMER SERVICE IF YOU HAVE ANY QUESTIONS ABOUT PART DIFFERENCES.

PREVIOUS PARTS LIST VERSIONS ARE NOT AVAILABLE ONLINE.



Ref. #	Part #	Description
001	P9004001	Housing Assembly
002	P9004002	Set Screw
003	P9004003	Brush Holder
004	P9004004	Rear Cover
005	P9004005	Brush Terminal
006	P9004006	Grounding Washer
007	P9004007	Lock Washer
008	P9004008	Machine Screw
012	P9004012	Armature Assembly
014	P9004014	Bearing (608ZZC2)
015	P9004015	Bearing (6200ZZCM)
016	P9004016	Cutterhead
017	P9004017	Holder Spring
018	P9004018	Guard Plate
019	P9004019	Blade
020	P9004020	Back Plate
021	P9004021	Blade Holder
022	P9004022	Washer
023	P9004023	Bolt
024	P9004024	Machine Screw
025	P9004025	Bearing (6200ZZCM)
026	P9004026	Bearing Lock
027	P9004027	Bearing Cover
028	P9004028	End Bracket
029	P9004029	Self-Tapping Screw
030	P9004030	Washer
032	P9004032	Front Foot
033	P9004033	Rubber Packing
034	P9004034	Spring
035	P9004035	Washer
036	P9004036	Depth Set Knob
037	P9004037	Scale
038	P9004038	Washer
039	P9004039	Thrust Washer

Ref. #	Part #	Description
040	P9004040	Trigger/Switch
041	P9004041	Noise Suppressor
042	P9004042	Terminal
043	P9004043	Cord Assembly
044	P9004044	Cord Strain Relief
045	P9004045	Cord Clip
046	P9004046	Internal Wire Assembly
047	P9004047	Connector
048	P9004048	Self-Tapping Screw
049	P9004049	Plate
050	P9004050	Rear Foot
051	P9004051	Handle
052	P9004052	Chip Chute Cover
053	P9004053	Self-Tapping Screw
054	P9004054	Pulley (A)
055	P9004055	Pulley (B)
056	P9004056	Belt
057	P9004057	Belt Cover
058	P9004058	Carbon Brush
059	P9004059	Brush Cap
060	P9004060	Nameplate
061	P9004061	Knob
062	P9004062	Blade Setting Jig
063	P9004063	Blade Sharpening Jig
064	P9004064	Machine Screw
065	P9004065	Guide Fence
066	P9004066	T-Handle Hex Wrench
067	P9004067	Caution Label
069	P9004069	Self-Tapping Screw
070	P9004070	Washer
071	P9004071	Terminal
072	P9004072	Plate
073	P9004073	Carriage Bolt
074	P9004074	Wing Nut