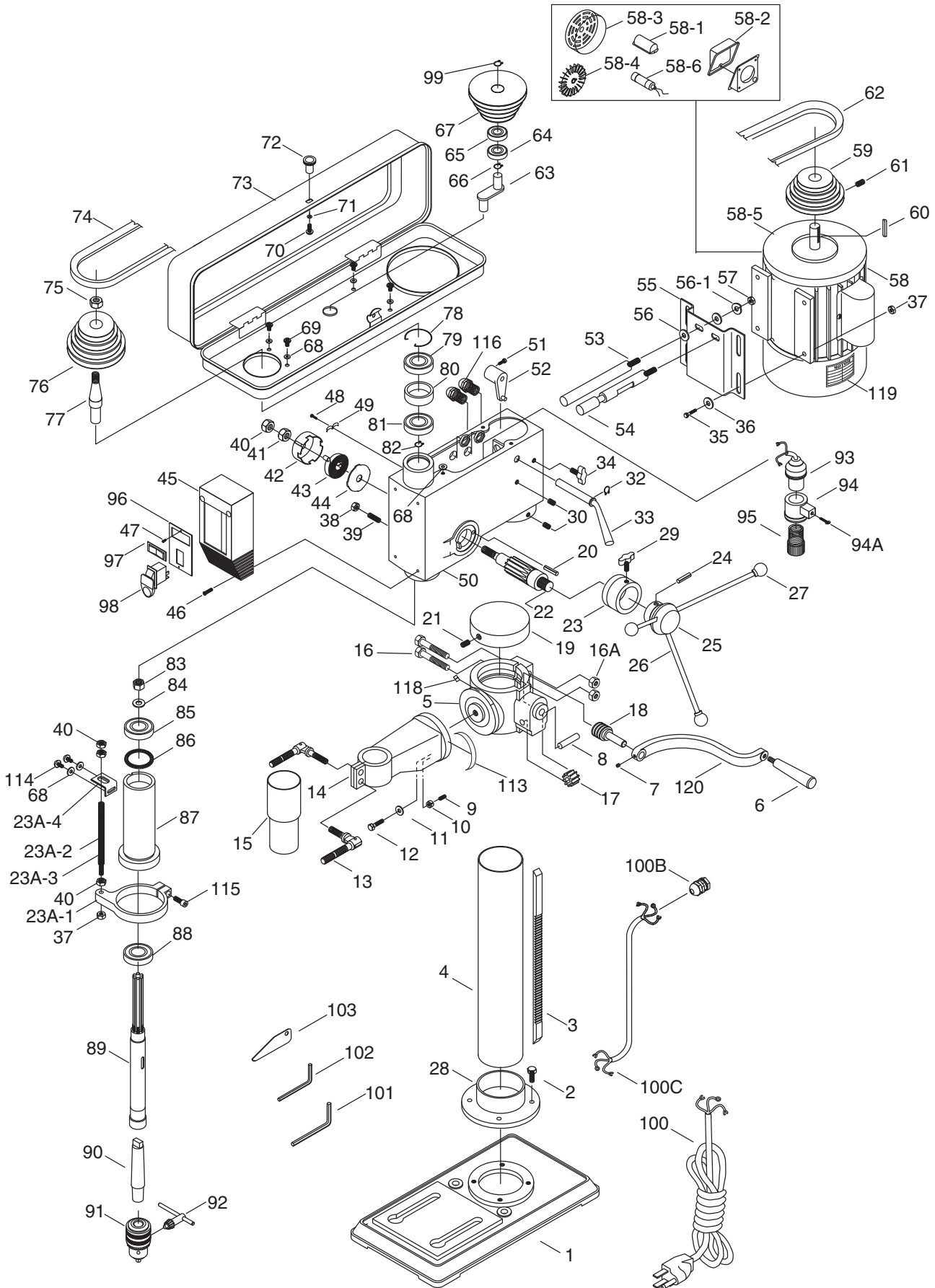


Parts Breakdown



Parts List

REF	PART #	DESCRIPTION
1	P9969001	BASE
2	PB32M	HEX BOLT M10-1.5 x 25
3	P9969003	RACK
4	P9969004	COLUMN
5	P9969005	GEARBOX BRACKET
6	P9969006	HANDLE
7	PSS01M	SET SCREW M6-1 X 10
8	P9969008	SHAFT
9	P9969009	LOCKING PIN
10	PN01M	HEX NUT M6-1
11	PW08M	FLAT WASHER 16MM
12	PB132M	HEX BOLT M16-2 X 40
13	P9969013	LOCK HANDLE
14	P9969014	BRACKET BODY
15	P9969015	BRACKET COLUMN
16	P9969016	HEX BOLT M16-2 X 70
16A	P9969016A	HEX NUT M16-2
17	P9969017	GEAR
18	P9969018	WORM GEAR
19	P9969019	COLUMN CAP
20	P9969020	PIN STOP
21	PSS01M	SET SCREW M6-1 X 10
22	P9969022	FEED SHAFT
23	P9969023	DEPTH RING
23A-1	P9969023A-1	QUILL CLAMP
23A-2	P9969023A-2	SCALE
23A-3	P9969023A-3	DEPTH STOP SCALE STUD
23A-4	P9969023A-4	DEPTH STOP BRACKET
24	PRP28M	ROLL PIN 5 X 40
25	P9969025	PINION HUB
26	P9969026	DOWNFEED HANDLE
27	P9969027	DOWNFEED HANDLE KNOB
28	P9969028	COLUMN SHOULDER
29	P9969029	DEPTH RING KNOB M8-1.25 x 16
30	PSS13M	SET SCREW M10-1.5 X 12
32	PR05M	EXT RETAINING RING 15MM
33	P9969033	TENSION LEVER
34	P9969034	BELT TENSION KNOB M8-1.25 x 16
35	PB19M	HEX BOLT M8-1.25 X 24
36	PW01M	FLAT WASHER 8MM
37	PN03M	HEX NUT M8-1.25
38	PN02M	HEX NUT M10-1.5
39	P9969039	SPECIAL SET SCREW M10-1.5 X 25
40	PN31M	HEX NUT M12-1.5
41	PN31M	HEX NUT M12-1.5
42	P9969042	SPRING CAP
43	P9969043	COILED FLAT SPRING
44	P9969044	SPRING COVER
45	P9969045	SWITCH BOX
46	PS08M	PHLP HD SCR M5-.8 X 12
47	PHTEK1	TAP SCREW #6 X 1/2
48	PS09M	PHLP HD SCR M5-.8 X 10

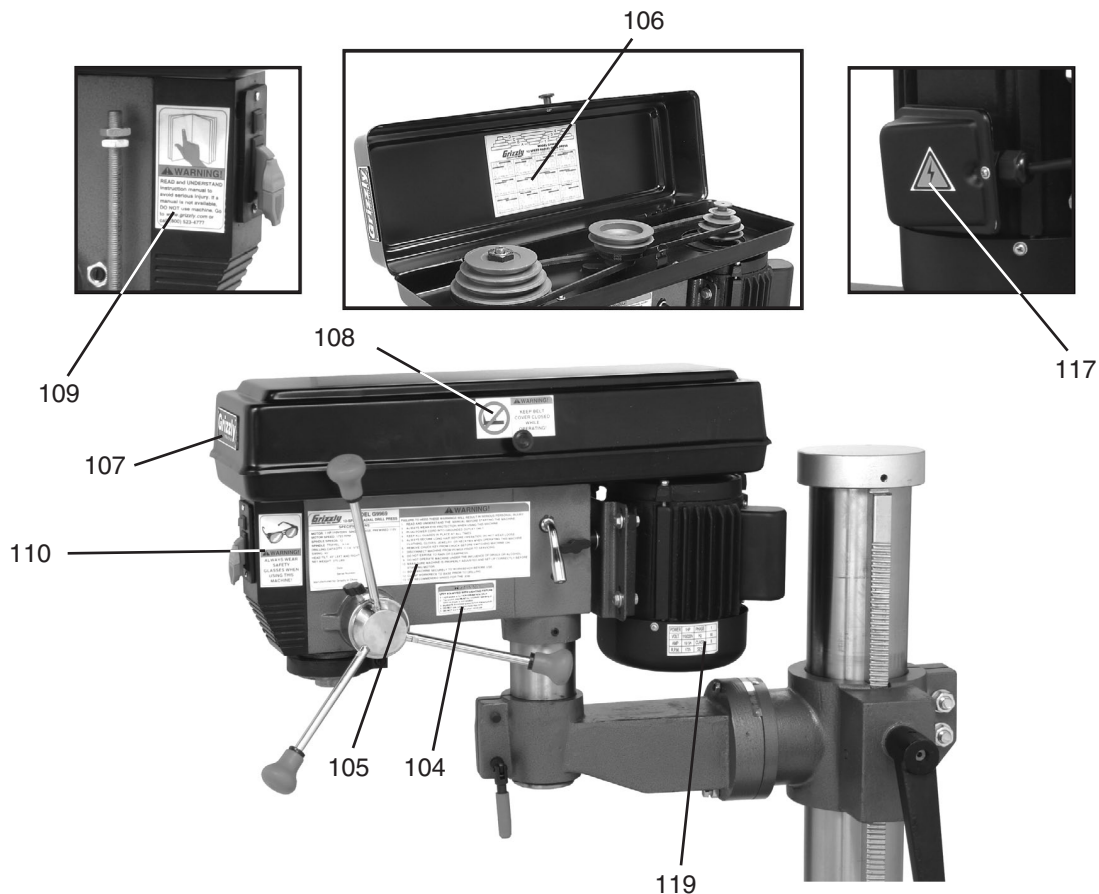
REF	PART #	DESCRIPTION
49	P9969049	CORD CLAMP
50	P9969050	BODY
51	PB03M	HEX BOLT M8-1.25 X 16
52	P9969052	SHIFTER
53	P9969053	SLIDE BAR
54	P9969054	NOTCHED SLIDE BAR
55	P9969055	MOTOR BASE
56	PW06M	FLAT WASHER 12MM
56-1	PLW05M	LOCK WASHER 12MM
57	PN09M	HEX NUT M12-1.75
58	P9969058	MOTOR 110V/220V 1HP
58-1	P9969058-1	CAPACITOR COVER
58-2	P9969058-2	CONNECTION BOX
58-3	P9969058-3	MOTOR COVER
58-4	P9969058-4	MOTOR FAN
58-5	P9969058-5	CAST IRON END BELL FOR MOTOR
58-6	P9969058-6	S CAPACITOR 200 MFD 125VAC
59	P9969059	MOTOR PULLEY
60	PK34M	KEY 5 X 5 X 20
61	PSS01M	SET SCREW M6-1 X 10
62	PVM27.5	V-BELT M27.5 3L275
63	P9969063	CENTER SHAFT
64	P6202	BALL BEARING 6202ZZ
65	P6202	BALL BEARING 6202ZZ
66	PR05M	EXT RETAINING RING 15MM
67	P9969067	CENTER PULLEY
68	PW03M	FLAT WASHER 6MM
69	PS68M	PHLP HD SCR M6-1 X 10
70	PS05M	PHLP HD SCR M5-.8 x 8
71	PW02M	FLAT WASHER 5MM
72	P9969072	KNOB M5-.8
73	P9969073	PULLEY COVER
74	PVM25	V-BELT M-25 3L250
75	P9969075	PULLEY NUT
76	P9969076	SPINDLE PULLEY
77	P9969077	PULLEY SHAFT
78	PR38M	INT RETAINING RING 62MM
79	P6205	BALL BEARING 6205ZZ
80	P9969080	SPACER
81	P6205	BALL BEARING 6205ZZ
82	PR38M	INT RETAINING RING 62MM
83	P9969083	ROUND NUT M17 X 1
84	P9969084	WASHER
85	P6203	BALL BEARING 6203ZZ
86	P9969086	RUBBER WASHER 62 X 50 X 2
87	P9969087	QUILL
88	P6205	BALL BEARING 6205ZZ
89	P9969089	SPINDLE
90	P9969090	ARBOR MT4/JT3
91	P9969091	CHUCK 5/8" JT3
92	P9969092	CHUCK KEY
93	P9969093	LIGHT SOCKET 110V



Parts List and Label Placement

REF	PART #	DESCRIPTION
94	P9969094	LIGHT BASE 110V
94A	PS06M	PHLP HD SCR M5-.8 x 20
95	P9969095	LIGHT SCREW
96	P9969096	SWITCH PLATE
97	P9969097	SWITCH (LIGHT)
98	PSW06	SWITCH 110/220V
99	PR22M	INT RETAINING RING 38MM
100	P9969100	POWER CORD
100B	P9969100B	STRAIN RELIEF
100C	P9969100C	MOTOR CORD
101	PAW05M	HEX WRENCH 5MM
102	PAW03M	HEX WRENCH 3MM
103	P9969103	DRIFT KEY
104	P9969104	LIGHT WARNING LABEL

REF	PART #	DESCRIPTION
105	P9969105	WARNING/ID LABEL
106	P9969106	SPEED CHART LABEL
107	P7943107	GRIZZLY BLACK/AL LABEL
108	P7943108	BELT COVER CLOSED LABEL
109	PLABEL-12	READ MANUAL 2" X 3-5/16"
110	PLABEL-11	SAFETY GLASSES 2" X 3-5/16"
113	P9969113	ANGLE SCALE
114	PS03M	PHLP HD SCR M6-1 X 8
115	PSB14M	CAP SCREW M8-1.25 X 20
116	P9969116	STRAIN RELIEF
117	PLABEL-14	ELECTRICITY LABEL
118	P9969118	INDICATOR
119	P9969119	MOTOR LABEL
120	P9969120	CRANK LEVER



⚠️ WARNING

Safety labels warn about machine hazards and ways to prevent injury. The owner of this machine **MUST** maintain the original location and readability of the labels on the machine. If any label is removed or becomes unreadable, **REPLACE** that label before using the machine again. Contact Grizzly at (800) 523-4777 or www.grizzly.com to order new labels.

