

Grizzly Industrial, Inc.®

3 HP AIR COMPRESSOR

MODEL H3372

INSTRUCTION MANUAL

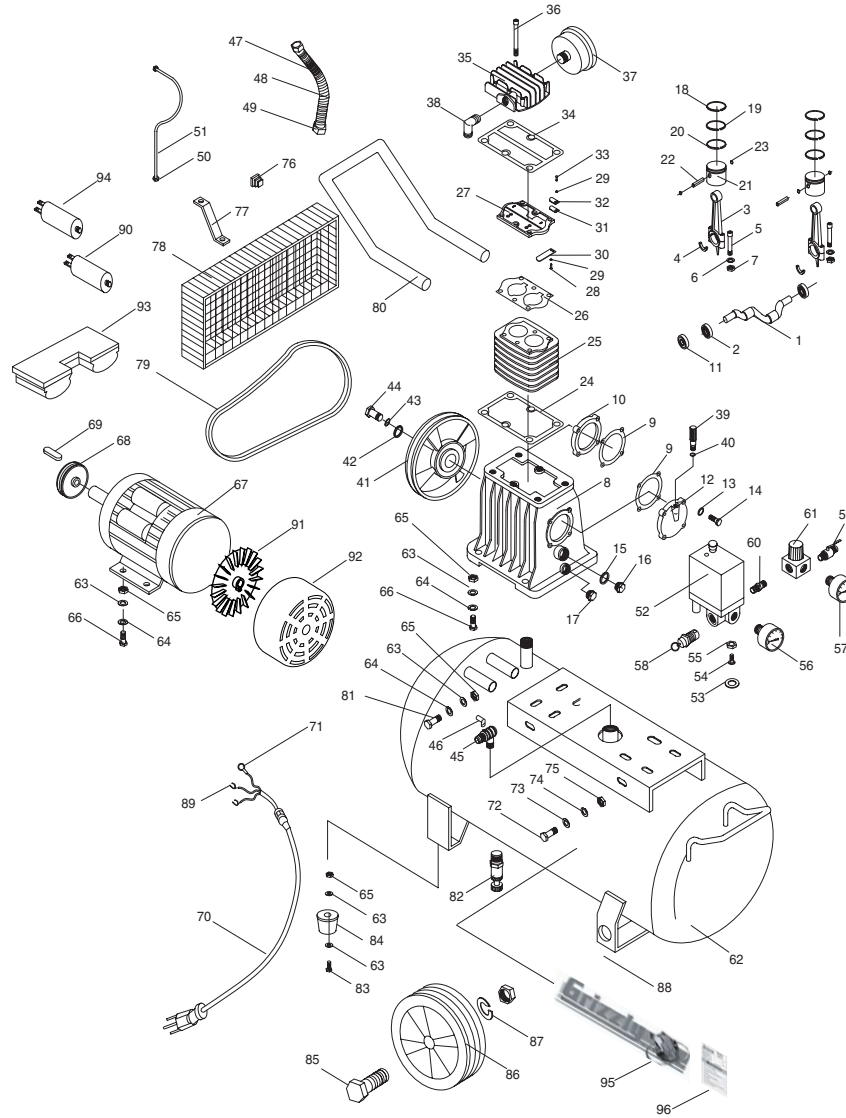


COPYRIGHT © APRIL, 2003 BY GRIZZLY INDUSTRIAL, INC.
**WARNING: NO PORTION OF THIS MANUAL MAY BE REPRODUCED IN ANY SHAPE
OR FORM WITHOUT THE WRITTEN APPROVAL OF GRIZZLY INDUSTRIAL, INC.**
PRINTED IN CHINA

ONLINE PARTS LIST DISCLAIMER

THESE PARTS REPRESENT THE CONFIGURATION OF THE MACHINE AS IT IS CURRENTLY BEING SHIPPED. THE MACHINE CONFIGURATION CAN CHANGE AS PRODUCT IMPROVEMENTS ARE INCORPORATED. IF YOU OWN AN EARLIER VERSION OF THE MACHINE, THIS PARTS LIST MAY NOT EXACTLY DEPICT YOUR MACHINE. CONTACT CUSTOMER SERVICE IF YOU HAVE ANY QUESTIONS ABOUT PART DIFFERENCES. PREVIOUS PARTS LIST VERSIONS ARE NOT AVAILABLE ONLINE.

Model H3372 3 HP Air Compressor



REF	PART #	DESCRIPTION
1	PH3372001	CRANK
2	P6202	BEARING 6202
3	PH3372003	CONNECTING ROD
4	PH3372004	ROD BEARING
5	PSB29M	CAP SCREW M6-1 X 40
6	PLW03M	LOCK WASHER 6MM
7	PN01M	HEX NUT M6-1.0
8	PH3372008	CRANKCASE
9	PH3372009	GASKET
10	PH3372010	CRANK CASE FRONT COVER
11	PH3372011	OIL SEAL B25 X 47 X 7
12	PH3372012	REAR COVER
13	PW01M	FLAT WASHER 8MM
14	PB09M	HEX BOLT M8-1.25 X 20.
15	PH3372015	GASKET
16	PH3370024	OIL SIGHT GLASS G½
17	PH3372017	HEX BOLT ½ MPT
18	PH3372018	COMPRESSION RING
19	PH3372019	COMPRESSION RING
20	PH3372020	OIL RING
21	PH3372021	PISTON
22	PH3370017	PISTON PIN 12 X 37.5MM
23	PR49M	INT RETAINING RING 12MM
24	PH3372024	CYLINDER TO CRANKCASE GASKET
25	PH3372025	CYLINDER
26	PH3372026	GASKET
27	PH3372027	VALVE PLANK
28	PB108M	HEX BOLT M3-.5 X 10
29	PLW09M	LOCK WASHER 3MM
30	PH3372030	INLET VALVE PATCH
31	PH3372031	OUTLET VALVE PATCH
32	PH3372032	RISE LIMITER
33	PB109M	HEX BOLT M3-.5 X 12
34	PH3372034	CYLINDER HEAD GASKET
35	PH3372035	CYLINDER HEAD
36	PSB98M	CAP SCREW M8-1.25 X 160
37	PH3372037	AIR INTAKE FILTER
38	PH3372038	90° ELBOW ½ MPT X ¾-16 UNF
39	PH3372039	OIL BREATHER

REF	PART #	DESCRIPTION
40	PH3372040	O-RING
41	PH3372041	PULLEY
42	PH3372042	GASKET 8MM
43	PLW04M	LOCK WASHER 8MM
44	PB20M	HEX BOLT M8-1.25 X 35
45	PH3372045	CHECK VALVE
46	PH3372046	ELBOW 1/8 MPT X 1/16 MPT
47	PH3372047	DISCHARGE PIPE 12MM
48	PH3372048	COOLER
49	PH3372049	COMPRESSION NUT 3/8 FPT
50	PH3370062	FLARE CONNECTOR ID10MM
51	PH3372051	EXHAUST PIPE 6MM
52	PH3372052	PRESSURE SWITCH
53	PH3372053	GASKET
54	PH3370057	STEM ADAPTER 1/4 MPT
55	PH3370058	FLARE CONNECTOR 3/8 FPT
56	PH3372056	PRESSURE GAUGE
57	PH3372057	PRESSURE GAUGE
58	PH3372058	SAFETY VALVE
59	PH3372059	BALL VALVE 1/4 NPT
60	PH3372060	NIPPLE 1/4 X 1/8 NPT
61	PH3372061	REGULATOR
62	PH3372062	TANK 11 GALLON
63	PW01M	FLAT WASHER 8MM
64	PLW04M	LOCK WASHER 8MM
65	PN03M	HEX NUT M8-1.25
66	PB26M	HEX BOLT M8-1.25 X 30
67	PH3372067	MOTOR
68	PH3372068	MOTOR PULLEY
69	PK41M	KEY 8 X 8 X 40
70	PH3372070	POWER CORD
71	PH3372071	RING TERMINAL #10
72	PB08M	HEX BOLT M6-1 X 20
73	PW03M	FLAT WASHER 6MM
74	PLW03M	LOCK WASHER 6MM
75	PN01M	HEX NUT M6-1.0
76	PH3372076	BUTTON
77	PH3372077	SUPPORTING PLATE
78	PH3372078	BELT GUARD

REF	PART #	DESCRIPTION
79	PH3372079	BELT A1143
80	PH3372080	HANDLE
81	PB21M	HEX BOLT M8-1.25 X 42
82	PH3370070	DRAIN VALVE 14MM
83	PB09M	HEX BOLT M8-1.25 X 20
84	PH3372084	CUSHION FOOT
85	PB80M	HEX BOLT M16-2.0 X 55
86	PH3372086	PNEUMATIC TIRE 8.5"
87	PW08M	FLAT WASHER 16MM
88	PN13M	HEX NUT M16-2.0
89	PH3372089	FORK TERMINAL #10
90	PH3372090	CAPACITOR 250 MFD 250VAC
91	PH3372091	MOTOR FAN
92	PH3372092	FAN COVER
93	PH3372093	CAPACITOR COVER
94	PH3372094	CAPACITOR 40 MFD 400VAC
95	PH3372095	GRIZZLY LOGO LABEL
96	PH3372096	MACHINE ID LABEL