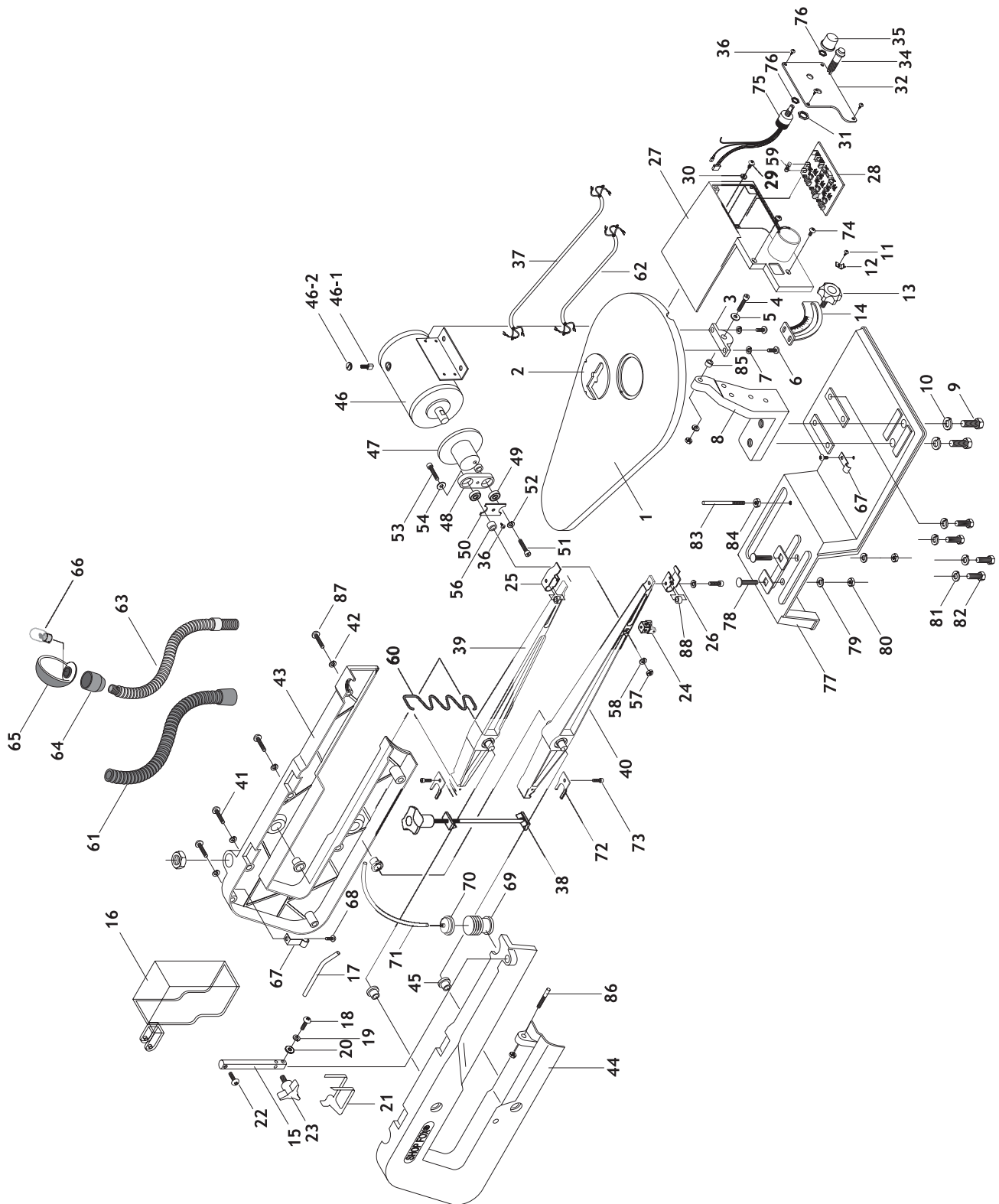


# Parts



REF	PART #	DESCRIPTION
1	X1713001	TABLE
2	X1713002	TABLE INSERT
3	X1713003	TABLE PIVOT BRACKET
4	XPSB48M	CAP SCREW M6-1 X 35
5	XPW03M	FLAT WASHER 6MM
6	XPS09M	PHLP HD SCR M5-.8 X 10
7	XPLW01M	LOCK WASHER 5MM
8	X1713008	TABLE PEDESTAL
9	XPB07M	HEX BOLT M8-1.25 X 25
10	XPLW04M	LOCK WASHER 8MM
11	XPS65M	PHLP HD SCR M6-1 X 10
12	X1713012	SCALE INDICATOR
13	X1713013	MALE KNOB M6 X 14
14	X1713014	GRADUATED SCALE 0-45°
15	X1713015	AIR HOSE POST
16	X1713016	BLADE GUARD
17	X1713017	AIR HOSE
18	XPS65M	PHLP HD SCR M6-1. X 10
19	XPLW03M	LOCK WASHER 6MM
20	XPW03M	FLAT WASHER 6MM
21	X1713021	HOLD DOWN SHOE
22	XPS09M	PHLP HD SCR M5-.8 X 10
23	X1713023	KNOB BOLT M6-1 X 13
24	X1713024	BLADE CLAMP
25	X1713025	UPPER BLADE GUIDE
26	X1713026	LOWER BLADE GUIDE
27	X1713027	SWITCH BOX HOUSING
28	X1713028	CIRCUIT BOARD
29	XPS02M	PHLP HD SCR M4-.7 X 12
30	XPW05M	FLAT WASHER 4MM
31	XPNO9M	HEX NUT M12-1.75
32	XPLW05M	LOCK WASHER 12MM
33	X1713033	SWITCH BOX COVER
34	X1713034	LIGHT SWITCH
35	X1713035	SPEED CONTROL DIAL
36	XPHTEK7	TAP SCREW #8 X 3/8"
37	X1713037	POWER CORD
38	X1713038	BLADE TENSION ASSEMBLY
39	X1713039	UPPER ARM
40	X1713040	LOWER ARM
41	XPS75M	PHLP HD SCR M5-.8 X 35
42	XPLW01M	LOCK WASHER 5MM
43	X1713043	RIGHT ARM COVER
44	X1713044	LEFT ARM COVER
45	X1713045	BUSHING 3/8"

REF	PART #	DESCRIPTION
46	X1713046	MOTOR
46-1	X1713046-1	CARBON BRUSH
46-2	X1713046-2	CARBON BRUSH CAP
47	X1713047	FLYWHEEL
48	X1713048	LINK
49	XP625	BALL BEARING 625ZZ
50	X1713050	RETAINER
51	XPSB24M	CAP SCREW M5-.8 X 16
52	XPLW01M	LOCK WASHER 5MM
53	XPSB38M	CAP SCREW M5-.8 X 25
54	XPW02M	FLAT WASHER 5MM
55	XPLW02M	LOCK WASHER 4MM
56	X1713056	SPACER 5MM ID X 6MM
57	XPNO6M	HEX NUT M5-.8
58	XPLW01M	LOCK WASHER 5MM
59	X1713059	6 AMP FUSE
60	X1713060	BLADE TENSION SPRING
61	X1713061	FLEXIBLE NECK GUARD
62	X1713062	MOTOR CORD
63	X1713063	FLEXIBLE NECK
64	X1713064	LAMP HOUSING
65	X1713065	LAMP
66	X1713066	BULB
67	X1713067	CORD CLAMP
68	XPS07M	PHLP HD SCR M4-.7 X 8
69	X1713069	BELLOWS
70	X1713070	BELLOWS LOCK
71	X1713071	PVC TUBE
72	X1713072	FORKED RETAINER
73	XPSB17M	CAP SCREW M4-.7 X 10
74	XPS05M	PHLP HD SCR M5-.8 X 8
75	X1713075	VARIABLE SPEED SWITCH
76	X1713076	THIN PROFILE HEX NUT 10MM
77	X1713077	BASE
78	XPCB13M	CARRIAGE BOLT M6-1 X 20
79	XPLW03M	LOCK WASHER 6MM
80	XPNO1M	HEX NUT M6-1
81	XPLW03M	LOCK WASHER 6MM
82	XPB08M	HEX BOLT M6-1 X 20
83	X1713083	STUD BOLT M6-1 X 95
84	XPNO1M	HEX NUT M6-1
85	X1713085	SPACER
86	X1713086	STUD BOLT HINGE PIN M6-1 X 18
87	XPS62M	PHLP HD SCR M6-1 X 30
88	X1713088	BLADE GUIDE SPACER