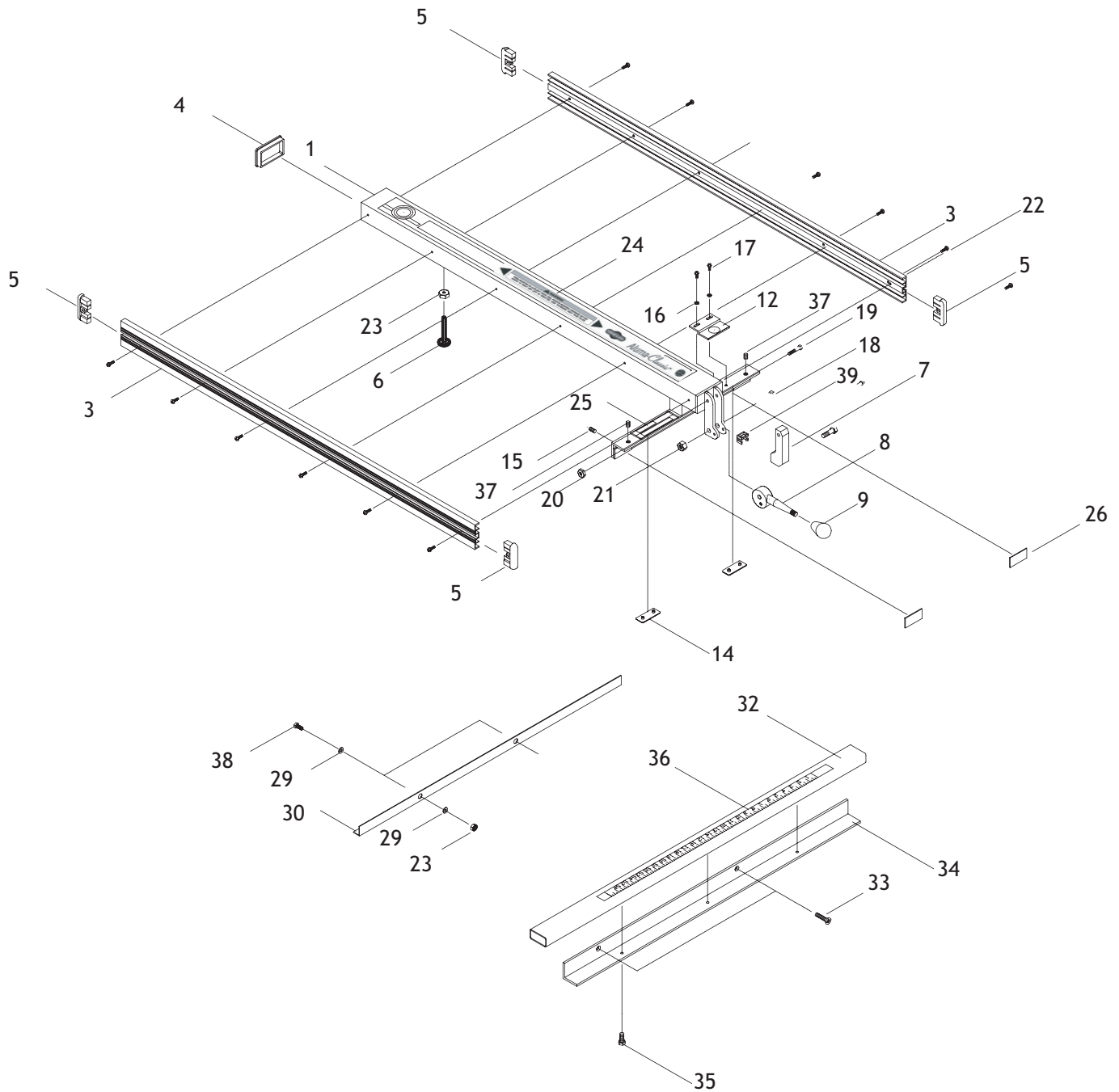


W1716 SHOP FOX® Aluma-Classic™ Fence



W1716 SHOP FOX® Aluma-Classic™ Fence

REF	PART #	DESCRIPTION
1	X1716001	FENCE BODY ASSEMBLY
3	X1716003	FENCE SIDEBOARD
4	X1716004	FENCE PLUG
5	X1716005	FENCE SIDEBOARD CAP
6	X1716006	ADJUSTMENT BOLT 5/16"-18
7	X1716007	CLAMP
8	X1716008	HANDLE
9	X1716009	FEMALE KNOB
12	X1716012	CLEAR INDICATOR
14	X1716014	SLIDER 19 X 50 X 2T
15	XPSS05	SETSCREW 5/16"-18 X 1/4"
16	XPW03	FLAT WASHER #10
17	XPS06	PHLP HD SCR 10-24 X 3/8"
18	XPB25	HEX BOLT 3/8"-16 X 1 3/4"
19	PB88	HEX BOLT 1/4"-20 X 1 3/4"
20	XPLN02	LOCK NUT 1/4"-20
21	XPLN01	LOCK NUT 3/8"-16
22	XPS24	PHLP HD SCR 8-32 X 3/8"
23	XPN02	HEX NUT 5/16"-18
24	X1716024	ALUMA-CLASSIC™ LABEL
25	X1716025	WARNING LABEL (SHORT)
26	X1716026	SLIDER 19 X 50 X 1.2T
29	XPW07	FLAT WASHER 5/16"
30	X1716030	REAR RAIL
32	X1716032	FRONT RAIL
33	XPFH25	FLAT HD SCR 5/16"-18 X 1
34	X1716033	FRONT RAIL BRACKET
35	XPB05	HEX BOLT 1/4"-20 X 3/4"
36	X1716036	SCALE 30"
37	XPSS05	SETSCREW 5/16"-18 X 1/4"
38	XPSB03	CAP SCREW 5/16"-18 X 1
39	X1716039	CLAMP PLUG



W1720 SHOP FOX® Aluma-Classic™ Fence

REF	PART #	DESCRIPTION
1	X1716001	FENCE BODY ASSEMBLY
3	X1716003	FENCE SIDEBOARD
4	X1716004	FENCE PLUG
5	X1716005	FENCE SIDEBOARD CAP
6	X1716006	ADJUSTMENT BOLT 5/16"-18
7	X1716007	CLAMP
8	X1716008	HANDLE
9	X1716009	FEMALE KNOB
12	X1716012	CLEAR INDICATOR
14	X1716014	SLIDER 19 X 50 X 2T
15	XPSS05	SETSCREW 5/16"-18 X 1/4"
16	XPW03	FLAT WASHER #10
17	XPS06	PHLP HD SCR 10-24 X 3/8"
18	XPB25	HEX BOLT 3/8"-16 X 1 3/4"
19	XPB119	HEX BOLT 1/4"-20 X 1 3/4"
20	XPLN02	LOCK NUT 1/4"-20
21	XPLN01	LOCK NUT 3/8"-16
22	XPS24	PHLP HD SCR 8-32 X 3/8"
24	X1716024	ALUMA-CLASSIC™ LABEL
25	X1716025	WARNING LABEL (SHORT)
26	X1716026	SLIDER 19 X 50 X 1.2T
37	XPSS05	SETSCREW 5/16"-18 X 1/4"

REF	PART #	DESCRIPTION
39	X1716039	CLAMP PLUG
102	X1721002	ALUMINUM FRONT RAIL
103	X1721003	ALUMINUM REAR RAIL
111	XPW03M	FLAT WASHER 6MM
113	XPW07	FLAT WASHER 5/16"
114	X1721014	FRONT RAIL CAP (L)
115	X1721015	FRONT RAIL CAP (R)
118	X1721018	RUBBER FOOT BOLT
121	XPN01M	HEX NUT M6-1
122	XPN08	HEX NUT 3/8"-16
123	XPN02	HEX NUT 5/16"-18
124	XPN02	HEX NUT 5/16"-18
126	X1721026	LEG (LONG)
127	X1721027	LENGTH SCALE 50"
131	XPHTK7	SELF TAP SCREW #8 X 3/8"
134	X1721034	REAR RAIL CAP
140	X1721040	SQUARE BOLT M6-1 X 30
141	X1721041	SQUARE BOLT 5/16"-18 X 3/4"
201	X1722001	METAL WING
202	XPN02	HEX NUT 5/16"-18
203	XPW07	FLAT WASHER 5/16"
204	X1721041	SQUARE BOLT 5/16"-18 X 3/4"