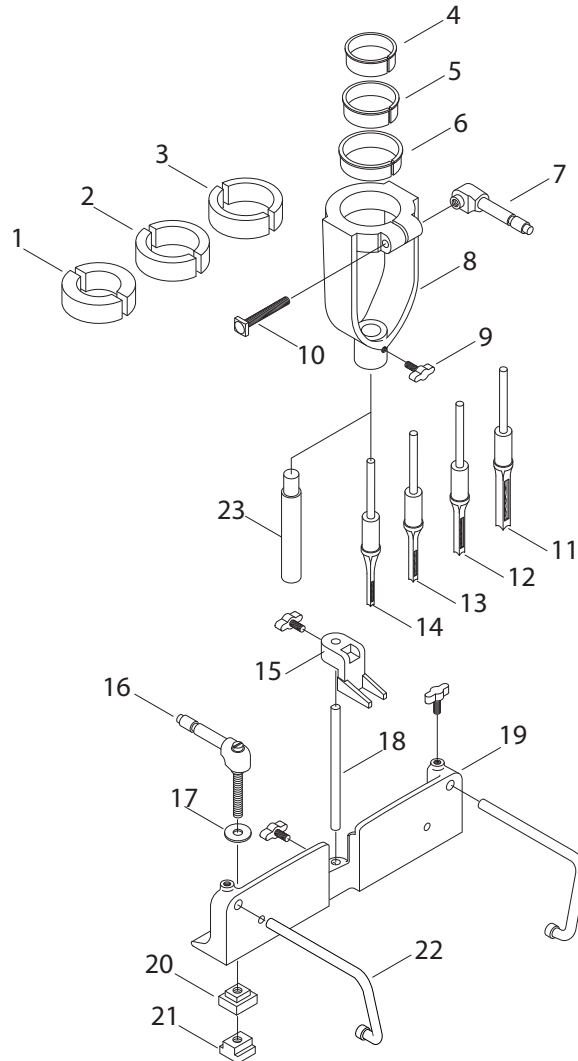


# H7789 Parts Breakdown and List



1	PH7789001	BUSHING PAIR 2.6" X 1.57"
2	PH7789002	BUSHING PAIR 2.6" X 1.88"
3	PH7789003	BUSHING PAIR 2.6" X 2.00"
4	PH7789004	SLEEVE 2.366" X 2.17"
5	PH7789005	SLEEVE 2.6" X 2.366"
6	PH7789006	SLEEVE 2.945" X 2.6"
7	PH7789007	ADJUSTABLE HANDLE
8	PH7789008	CONE
9	PH7789009	KNOB
10	PH7789010	SQUARE HD BOLT $\frac{5}{16}$ "-18 X 2"
11	H2543	MORTISING CHISEL $\frac{1}{4}$ "
12	H2544	MORTISING CHISEL $\frac{5}{16}$ "

13	H2545	MORTISING CHISEL $\frac{3}{8}$ "
14	H2546	MORTISING CHISEL $\frac{1}{2}$ "
15	PH7789015	HOLD DOWN
16	PH7789016	ADJUSTABLE HANDLE
17	PW07	FLAT WASHER $\frac{5}{16}$ "
18	PH7789018	ROD
19	PH7789019	FENCE
20	PH7789020	TEE NUT - SMALL
21	PH7789021	TEE NUT - LARGE
22	PH7789022	HOLD DOWN ROD
23	PH7789023	ALIGNMENT TOOL

COPYRIGHT © OCTOBER, 2005 BY GRIZZLY INDUSTRIAL, INC.  
**WARNING: NO PORTION OF THIS MANUAL MAY BE REPRODUCED IN ANY SHAPE OR FORM WITHOUT THE WRITTEN APPROVAL OF GRIZZLY INDUSTRIAL, INC.**  
 #DD7686 PRINTED IN CHINA