

This update covers changes made to the owner's manual after it was printed. Keep this update with your owner's manual for future reference. *If you have questions, contact Tech Support at (570) 546-9663 or by email at techsupport@grizzly.com.*

What Has Been Added?

The Model T10010 Wet Grinder now includes a grinding jig for securing a variety of tools during grinding. All page references made on this insert refer to the pages in the original Model T10010 manual.

Using the Grinding Jig

1. DISCONNECT GRINDER FROM POWER!
2. Slide the grinding jig onto the universal support as shown in **Figure 1**.

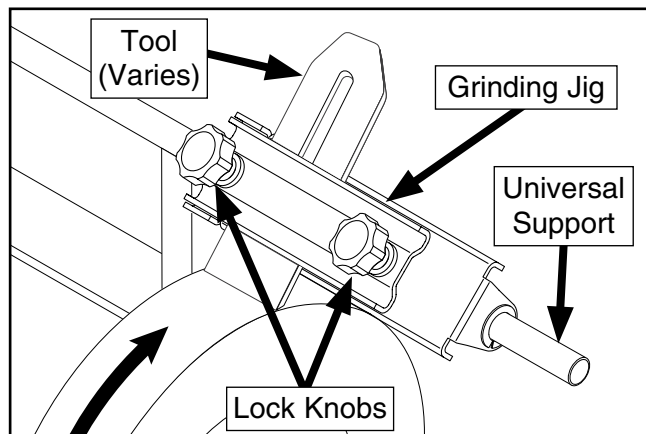
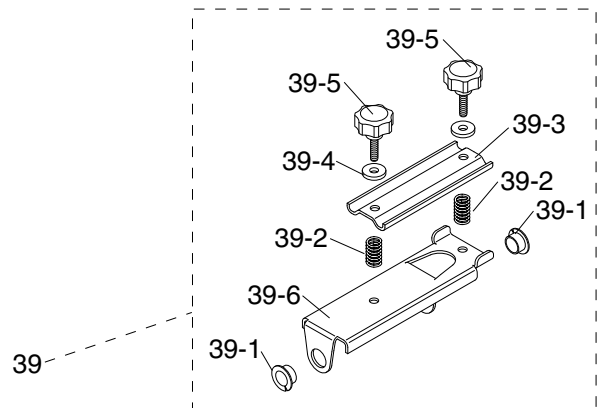


Figure 1. Grinding jig placement.

3. Insert the tool into the jig clamp, then use the angle guide, as described on **Page 15**, to set the grinding angle.
4. Once the grinding angle is set, tighten both lock knobs.

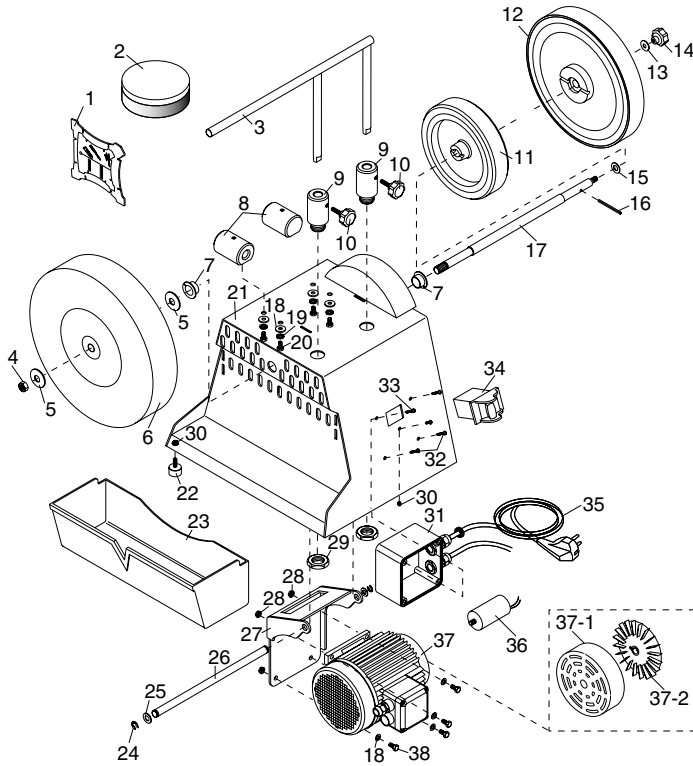
Grinding Jig Breakdown & Parts List

Use this breakdown and parts list together with those on **Pages 23 & 24**.



REF	PART #	DESCRIPTION
39	PT10010039	GRINDING JIG
39-1	PT10010039-1	BUSHING
39-2	PT10010039-2	COMPRESSION SPRING
39-3	PT10010039-3	CLAMP PLATE
39-4	PW03M	FLAT WASHER 6MM
39-5	PT10010039-5	KNOB M6-1 x 16
39-6	PT10010039-6	BASE PLATE

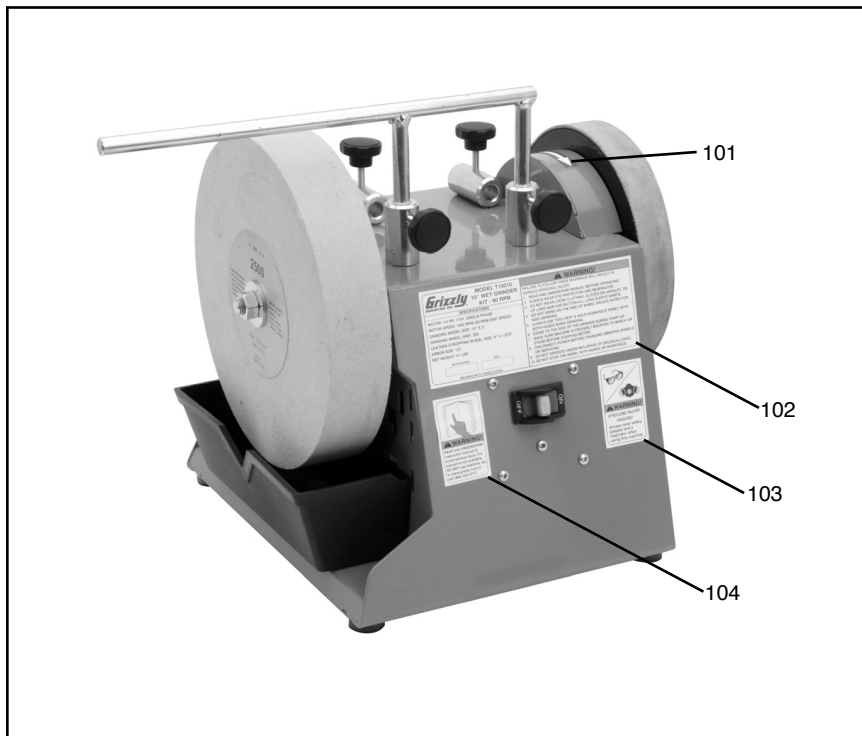
Main Breakdown & Parts List



REF PART #	DESCRIPTION
1	PT10010001 ANGLE GUIDE
2	PT10010002 HONING PASTE
3	PT10010003 UNIVERSAL SUPPORT
4	PN09M HEX NUT M12-1.75
5	PW06M FLAT WASHER 12MM
6	PT10010006 GRINDING WHEEL
7	PT10010007 BUSHING 15MM ID/17MM OD
8	PT10010008 HORIZ. SUPPORT HOLDER
9	PT10010009 VERT. SUPPORT HOLDER
10	PT10010010 KNOB BOLT M6-1 X 16
11	PT10010011 DRIVE WHEEL
12	PT10010012 STROPPING WHEEL
13	PW01M FLAT WASHER 8MM
14	PT10010014 KNOB NUT M8-1.25
15	PW06M FLAT WASHER 12MM
16	PRP23M ROLL PIN 4 X 44
17	PT10010017 ARBOR SHAFT
18	PW03M FLAT WASHER 6MM
19	PTLW05M EXT TOOTH WASHER 6MM
20	PB04M HEX BOLT M6-1 X 10

REF PART #	DESCRIPTION
21	PT10010021 GRINDER CASE
22	PT10010022 FOOT
23	PT10010023 WATER RESERVOIR
24	PEC015M E-CLIP 8MM
25	PW04M FLAT WASHER 10MM
26	PT10010026 MOTOR BRACKET SHAFT
27	PT10010027 MOTOR BRACKET
28	PN01M HEX NUT M6-1
29	PT10010029 SPECIAL NUT
30	PN04M HEX NUT M4-.7
31	PT10010031 SWITCH HOUSING
32	PHTEK8M TAP SCREW M4 X 20
33	PS38M PHLP HD SCR M4-.7 X 10
34	PT10010034 SWITCH W/DISABLING KEY
35	PT10010035 POWER CORD
36	PT10010036 S CAP 10M 250V 1-3/16 X 1-5/8
37	PT10010037 MOTOR 1/4HP 110V 1650RPM
37-1	PT10010037-1 MOTOR FAN COVER
37-2	PT10010037-2 MOTOR FAN
38	PHTEK15M TAP SCREW M4 X 10

Warning Labels Breakdown & Parts List



REF	PART #	DESCRIPTION
101	PT10010101	ROTATION DIRECTION ARROW
102	PT10010102	MACHINE ID LABEL

REF	PART #	DESCRIPTION
103	PT10010103	RESPIRATOR LABEL VERT
104	PLABEL-12A	READ MANUAL-VERTICAL NS 7/05