

Grizzly Industrial®

CORPORATE HEADQUARTERS

P.O. BOX 2069, BELLINGHAM, WA, U.S.A.

TELEPHONE: (360) 647-0801 • FAX: (360) 676-1075

Grizzly Industrial is Proud to Offer Bison® Lathe Chucks

Grizzly Industrial is very pleased to offer Bison Lathe Chucks. This well respected brand of chucks has been the long accepted standard for high quality European work holding technology. Check out Grizzly's great selection and excellent prices.

3-JAW PLAIN BACK OR CAMLOCK MOUNT CHUCKS



4-JAW CAMLOCK MOUNT CHUCKS



5-C COLLET CHUCKS



3, 4, OR 6-JAW SET-TRU CHUCKS



BACKPLATES FOR SET-TRU

HIGHLIGHTS (see next page for complete details and pricing)

- Made of forged steel or cast iron, induction hardened, and super-precision ground.
- Each chuck thoroughly inspected to meet extremely stringent accuracy standards.
- 5-C collet chucks have a concentricity of 0.0004" and a distortion-free clamping system.
- SET-TRU system allows chucks to be adjusted to position with a concentricity of 0.0004".
- Intelligently engineered to allow replacement of parts to extend the life of the chuck.



BISON® LATHE CHUCKS

ORDER ONLINE AT grizzly.com®

We are proud to offer Bison Lathe chucks. This well respected brand of chucks has been the long accepted standard for high quality European work holding technology. Check out the great selection and excellent prices below.

3-JAW CHUCKS



These plain back 3-jaw chucks are made with semi-steel bodies, 2-piece, hardened jaws and come complete with chuck wrench, screws and wrenches. Check out the back plates below for mounting to your lathe.

MODEL	SIZE	BORE	WEIGHT	PRICE
T10392	5"	1.26"	11 lbs	\$298.00
T10393	6¼"	1.65"	22 lbs	\$335.00
T10394	8"	2.16"	39 lbs	\$395.00
T10395	10"	2.99"	55 lbs	\$495.00
T10396	12½"	4.06"	110 lbs	\$750.00

\$69 shipping ANYWHERE IN LOWER 48 STATES

3-JAW CAMLOCK MOUNT CHUCKS



These direct mount 3-jaw chucks are made with semi-steel bodies, 2-piece, hardened jaws and come complete with chuck wrench, screws, studs and wrenches – everything you need to mount directly to your lathe.

MODEL	SIZE	BORE	WEIGHT	PRICE
T10397	6¼", D1-4	1.65"	20 lbs	\$495.00
T10398	8", D1-4	2.16"	42 lbs	\$595.00
T10399	8", D1-5	2.16"	42 lbs	\$595.00
T10400	8", D1-6	2.16"	42 lbs	\$595.00
T10401	10", D1-5	2.99"	71 lbs	\$795.00
T10402	10", D1-6	2.99"	71 lbs	\$795.00
T10403	10", D1-8	2.99"	71 lbs	\$795.00
T10404	12½", D1-6	4.06"	112 lbs	\$995.00
T10405	12½", D1-8	4.06"	112 lbs	\$995.00

\$39 shipping ANYWHERE IN LOWER 48 STATES

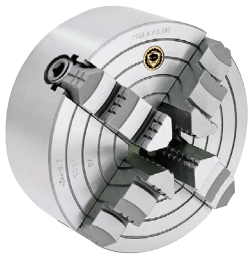
\$39 shipping ANYWHERE IN LOWER 48 STATES

\$39 shipping ANYWHERE IN LOWER 48 STATES

\$69 shipping ANYWHERE IN LOWER 48 STATES

\$69 shipping ANYWHERE IN LOWER 48 STATES

4-JAW CAMLOCK MOUNT CHUCKS



These direct mount 4-jaw chucks are made with semi-steel bodies, hardened and ground jaws and have independently adjustable jaws.

MODEL	SIZE	BORE	WEIGHT	PRICE
T10406	8" D1-4	1.97"	37 lbs	\$495.00
T10407	8" D1-5	1.97"	37 lbs	\$550.00
T10408	10" D1-5	2.56"	61 lbs	\$725.00
T10409	10" D1-6	2.56"	61 lbs	\$725.00
T10410	12½" D1-6	3.15"	87 lbs	\$895.00
T10411	12½" D1-8	3.15"	87 lbs	\$895.00

\$39 shipping ANYWHERE IN LOWER 48 STATES

\$39 shipping ANYWHERE IN LOWER 48 STATES

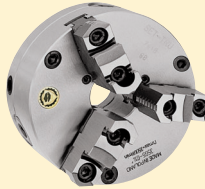
5-C COLLET CHUCKS



These 5-C collet chucks are made of high quality steel forgings and have a concentricity of 0.0004" (four ten thousandths of an inch). Simple key operated scroll provides uniform, distortion free clamping and low collet cycle times. All 5-C collets from 3/64" to 1/8" can be used.

MODEL	SIZE	WEIGHT	PRICE
T10412	Plain Back	12 lbs.	\$395.00
T10413	D1-4	15 lbs.	\$495.00
T10414	D1-5	15 lbs.	\$495.00
T10415	1½" x 8 TPI	15 lbs.	\$475.00
T10416	2¼" x 8 TPI	15 lbs.	\$475.00

3-JAW SET-TRU CHUCKS



These Set-Tru chucks offer 0.0004" concentricity, forged steel bodies for durability and high speed operation and 2-piece hardened jaws. Make sure to order one of the mounting plates below.

MODEL	SIZE	BORE	WEIGHT	PRICE
T10417	5" 3 Jaw	1.38"	11 lbs	\$595.00
T10418	6¼" 3 Jaw	1.65"	21 lbs	\$650.00
T10419	8" 3 Jaw	2.17"	35 lbs	\$750.00

6-JAW SET-TRU CHUCKS



Achieve maximum grip with minimal distortion with these 6-jaw chucks. What's more, they can be dialed in to repeat to 0.0004" on common diameter parts. Two-piece jaws offer a wide range of clamping possibilities.

MODEL	SIZE	BORE	WEIGHT	PRICE
T10420	6¼" 6 Jaw	1.65"	25 lbs	\$795.00
T10421	8" 6 Jaw	2.17"	42 lbs	\$995.00

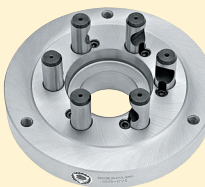
4-JAW SET-TRU CHUCKS



These 4-jaw scroll chucks offer the repeatability of all of the Set-Tru line, but are made for holding round and square stock. The 2-piece jaws are hardened and ground.

MODEL	SIZE	BORE	BORE	PRICE
T10422	6¼" 4 Jaw	1.65"	22 lbs	\$895.00
T10423	8" 4 Jaw	2.17"	37 lbs	\$995.00

BACKPLATES FOR SET-TRU



The backplates are fully machined to accept Bison Set-Tru chucks. Choose the backplate that fits your lathe and the chuck of your choice, bolt them up and go!

MODEL	SIZE	BORE	PRICE
T10424	5", D1-3 Backplate for Set-Tru	1.38"	\$150.00
T10425	5", D1-4 Backplate for Set-Tru	1.38"	\$175.00
T10426	6¼", D1-4 Backplate for Set-Tru	1.65"	\$195.00
T10427	6¼", D1-5 Backplate for Set-Tru	1.65"	\$195.00
T10428	6¼", D1-6 Backplate for Set-Tru	1.65"	\$210.00
T10429	8", D1-4 Backplate for Set-Tru	2.17"	\$225.00
T10430	8", D1-5 Backplate for Set-Tru	2.17"	\$245.00
T10431	8", D1-6 Backplate for Set-Tru	2.17"	\$245.00

CALL 24 HOURS A DAY FROM ANYWHERE IN THE U.S.A. **1-800-523-4777**