



# Bald Eagle™

## BE1151 Precision Priming Press Instructions

Tech Support: (360) 676-3299 • Email: [service@bullets.com](mailto:service@bullets.com) • Web: [www.bullets.com](http://www.bullets.com)



*Shell Holder Not Included.*

### Introduction

The Model BE1151 is designed to be the ultimate bench-mounted primer press, featuring a ratcheting top cap that adjusts primer seating depth in 0.002" increments. This gives the match shooter absolute control over the seating depth of primers, which can now be seated uniformly with every stroke.

The high-leverage handle can be positioned for right or left-handed use, and can be oriented at three different angles to suit any work preference. The stainless steel body and hardened parts are designed for years of trouble-free use.

**COPYRIGHT © MAY, 2015 BY BULLETS.COM**

**WARNING: NO PORTION OF THIS MANUAL MAY BE REPRODUCED IN ANY SHAPE OR FORM WITHOUT THE WRITTEN APPROVAL OF BULLETS.COM**

**PHONE: (800) 235-0272 • EMAIL: [SERVICE@BULLETS.COM](mailto:SERVICE@BULLETS.COM) • #BL17420 • PRINTED IN TAIWAN • V1.05.15**

## **!WARNING**

- Always wear safety glasses when loading primers.
- Never seat primer in a case with powder in it or on a loaded round to reduce risk of accidental explosion. Only seat primers into empty cases.
- Never look into the case while priming, to reduce risk of accidental explosion injury.
- DO NOT operate priming press near other primers, powders, flammables, or fire. Keep out of reach of children.
- DO NOT force priming press.

## Inventory

Description	Qty
A. Precision Priming Press .....	1
—Priming Press Body .....	1
—Large Primer Rod Assembly .....	1
—C-Washer.....	1
—Top Cap .....	1
B. Handle with Knob .....	1
C. Small Primer Rod Assembly .....	1
—Small Primer Rod .....	1
—Spring .....	1
—Small Primer Sleeve .....	1

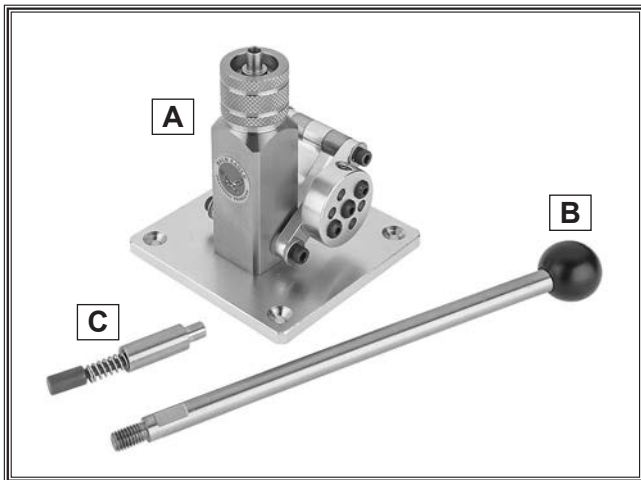


Figure 1. BE1151 inventory.

## Mounting

Mount the Model BE1151 to a sturdy workbench that is heavy enough to not tip over when the priming press handle is pulled. Mount the priming press near the front edge of a bench using the countersunk holes in the baseplate and fasteners (not included). Or, secure the priming press baseplate with a C-Clamp placed on the side opposite the handle, and as far to the rear as possible.

## Setup

The model BE1151 can accommodate both small primers (0.175") and large primers (0.210") using the primer rods and sleeves included with the unit. The Model BE1151 Primer Press is designed to use Redding® Shell Holders (not included), which we have found to be more consistent than other brands on the market. Redding shell holders are available from **Bullets.com**.

**Note:** All parts numbers referenced in the following steps are from the parts breakdown drawing shown on **Page 6**.

### Setting Up Priming Press

1. Thread handle into hub (see **Figure 2**).
2. Unscrew top cap and remove it and C-washer from priming press, but leave pre-installed large primer rod, sleeve, and spring inside priming press if you plan to use large primers.

—If you plan to load small primers, install small primer rod, spring, and sleeve, as shown in **Figure 2**.

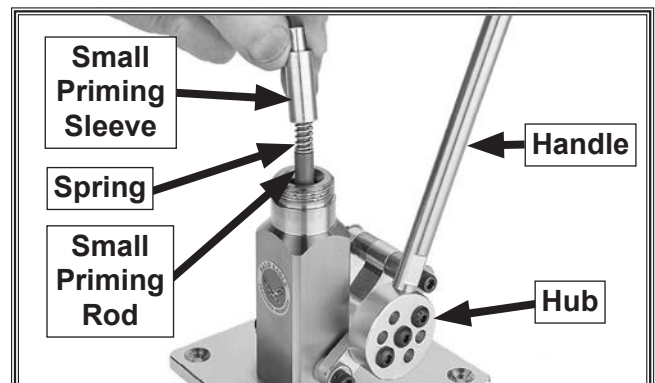
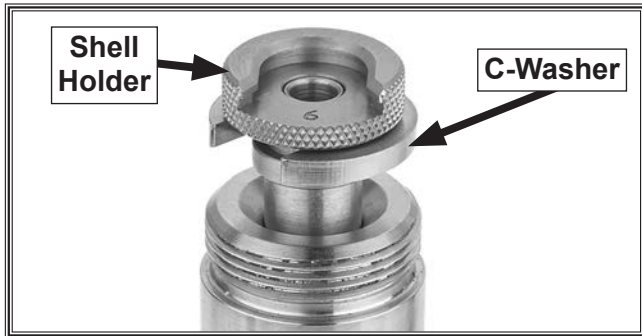


Figure 2. Installing small primer sleeve, rod, spring into priming press body.

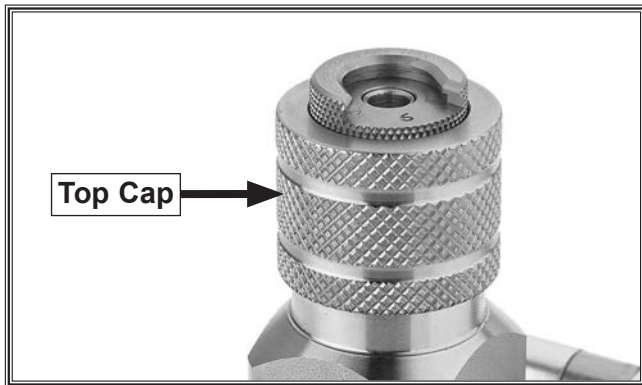
**Tip:** If sleeve does not seat into priming press, move handle forward and wiggle sleeve until it moves freely up and down.

- Slide C-washer into center groove of Redding® shell holder for desired caliber, and place shell holder on top of sleeve (see **Figure 3**).



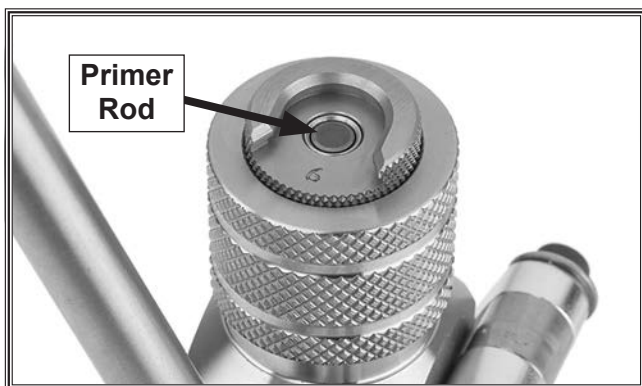
**Figure 3. Shell holder installed.**

- Place top cap onto shell holder and thread it on several turns (see **Figure 4**) until it starts ratcheting.



**Figure 4. Cap installed.**

- Raise primer rod by lowering handle (Part #21) all the way and turning knurled cap clockwise until primer rod is flush with top of sleeve (see **Figure 5**).



**Figure 5. Rod flush with top of sleeve.**

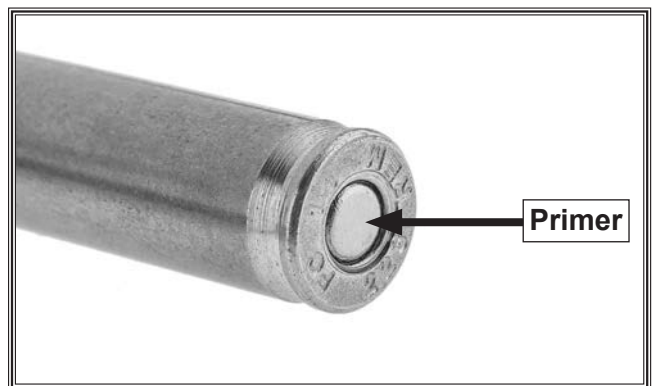
**Note:** Each "click" of the knurled cap is 0.002" and increases the depth of the primer seating by "0.002" when turned clockwise.

- Turn knurled cap five "clicks" clockwise and raise handle up all the way.
- Drop shiny side of primer face down into sleeve (see **Figure 6**), then slide empty brass case into shell holder. Test load case by lowering handle until it bottoms out.



**Figure 6. Inserting primer into sleeve.**

- Remove brass case (see **Figure 7**) and visually inspect it to see how far primer is seated. If brass case does not slide out of shell holder freely, turn knurled cap a few turns clockwise and lower handle to seat primer deeper until case slides out freely.



**Figure 7. Primer seated into case.**

- Place brass case on flat surface. If primer has seated past bottom of case, it should not rock side to side.

—If case rocks at all, then primer has not seated past bottom of case.

**IMPORTANT:** Primers must be seated past bottom of cases or misfires and hang fires may occur.

10. Continue to seat primer deeper as desired.

—If primer *is not* seated past bottom of case, adjust top cap clockwise, then reseal primer to new depth. Each click clockwise seats primer an additional 0.002”.

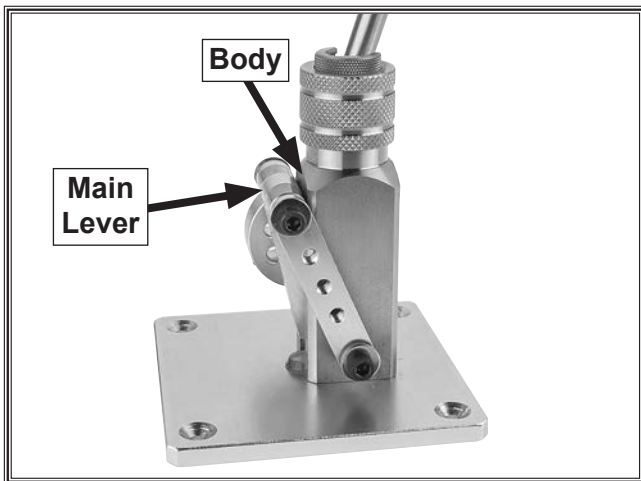
—If primer *is* seated too deeply or bottoms out before priming press hits travel stop, measure depth of primer below shell body and adjust top cap counterclockwise to reduce seating depth.

**Tip:** We recommend using a precision caliper for fine tuning seating depth.

## CAUTION

Some people like to "crush" the primer into the case until it bottoms out. Care must be taken, as too much force or trying to crush the primer may ignite it, causing personal injury.

**Note:** To make sure the primer is seated completely as adjusted, the handle (Part # 21) must be fully pushed down until the main lever (Part #4) on the back touches the stainless steel body (Part #2), as shown in **Figure 8**.



**Figure 8. Main lever touching stainless steel body.**

## Changing Handle Angle

The handle (Part #21) comes loose in the box. It can be mounted in one of three positions to suit the person using the press.

**Tools Needed:** Qty  
Hex Wrench 1/8" ..... 1

### To install or change handle angle:

1. Remove two outside screws (see **Figure 9**) and loosen center screw slightly.



**Figure 9. Removing an outside screw.**

2. Rotate hub to one of the other two positions and align holes in hub with holes in lever arm. Re-install outside screws while pulling handle up slightly. Tighten center screw.

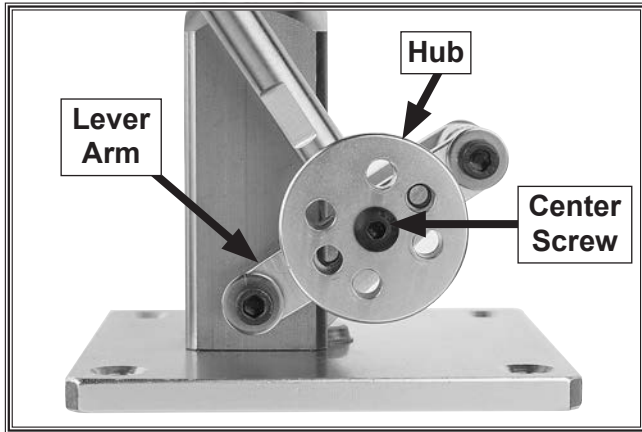
**Tip:** Moving handle to horizontal orientation changes action to an up-and-down motion, which has less tendency to rock a workbench.

## Changing Handle Position

The handle can be positioned on either the right or left side of the priming press.

### To change handle position:

1. Remove all three screws from hub.
2. Rotate handle 180° from its current orientation.
3. Place hub over left lever arm and install center screw (see **Figure 10**).



**Figure 10. Holes in hub and lever arm aligned.**

4. Rotate hub to desired angle, align holes in hub and lever (see **Figure 10**), then install remaining screws.

## Operation

1. Make sure correct size of primer rod and sleeve are installed and correct shell holder is installed.
2. Pull handle forward and make sure top of primer rod is flush with end of sleeve (see **Figure 5**).
3. Retract primer handle, then drop shiny side of primer face down into sleeve (see **Figure 6** on **Page 3**).
4. Slide empty brass case into shell holder and pull handle completely forward. You should hear a small "click," indicating priming press has hit its travel stop on back of stainless steel press body.
5. Return handle to rear position and remove primed brass case.

6. Inspect primer to ensure it is fully seated to desired depth.

—If it *is not* seated, adjust top cap clockwise, then reseal primer to new depth. Each click seats primer an additional 0.002".

—If primer *is* seated too deeply or bottoms out before priming press hits travel stop, measure depth of primer below shell body and adjust top cap counterclockwise.

**Tip:** We recommend using a precision caliper for fine tuning seating depth.

## Lubrication

The BE1151 comes pre-lubricated from the factory. However, it will benefit from periodic cleaning and lubrication, depending upon amount of use. Regularly inspect top of primer rod for an accumulation of grit or small brass chips. Such debris may have a negative impact on the repeatability of the press.

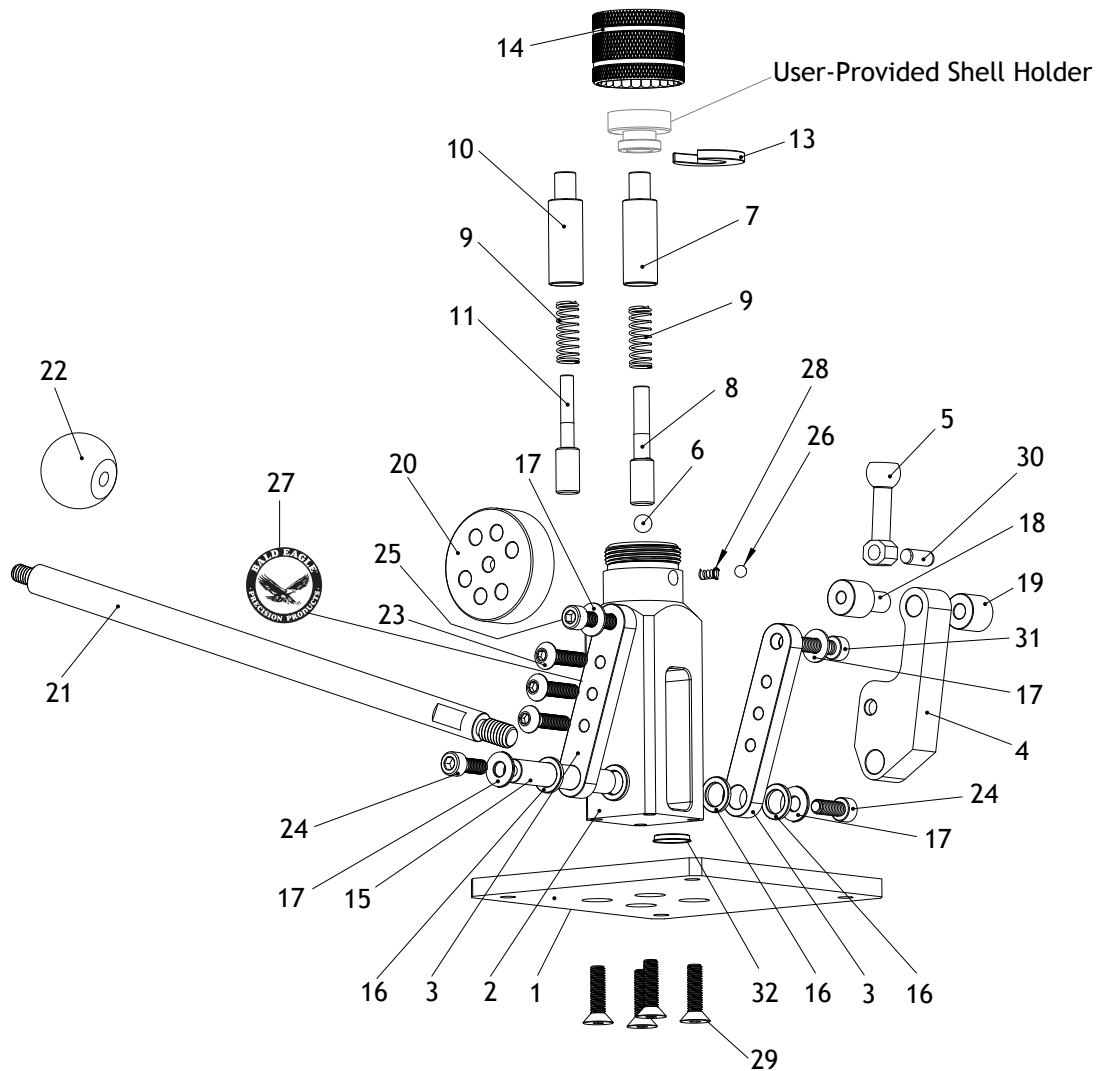
Lubricant Type	Amount
Gear Oil .....	1 Drop
General Purpose Grease .....	Small Dab

### To lubricate model BE1151:

1. Remove top cap, shell holder, and C-washer.
2. Remove primer rod, spring, and sleeve. Then disassemble and clean all three parts with a rag and cotton swab.
3. Spread a single drop of oil onto primer rod and exterior of primer sleeve, then wipe off any excess. Do not place oil on top ¼" of primer rod, especially top of primer sleeve. If you accidentally get oil on these areas, remove it, as oil is harmful to primers.
4. Add small dab of general purpose grease to bottom of primer rod, then follow **Setup** on **Page 2**.
5. After extended use, remove press from its mounted location. While holding it horizontally, place a drop of oil onto lower axle and dowel pin (refer to Parts #15 and #30 in parts breakdown). Re-install press.



# BE1151 Parts Breakdown



REF PART #	DESCRIPTION
1	PBE1151001 BASEPLATE
2	PBE1151002 MAIN BODY
3	PBE1151003 LEVER ARM
4	PBE1151004 MAIN LEVER
5	PBE1151005 BALL-END LINK
6	PBE1151006 STEEL BALL 6MM
7	PBE1151007 LARGE PRIMER SLEEVE 0.210"
8	PBE1151008 LARGE PRIMER ROD
9	PBE1151009 PRIMER ROD SPRING
10	PBE1151010 SMALL PRIMER SLEEVE
11	PBE1151011 SMALL PRIMER ROD 0.175"
13	PBE1151013 C-WASHER
14	PBE1151014 TOP CAP
15	PBE1151015 LOWER AXLE
16	PBE1151016 FLAT WASHER PLASTIC
17	PBE1151017 FLAT WASHER 5MM STAINLESS STEEL

REF PART #	DESCRIPTION
18	PBE1151018 UPPER AXLE A BRASS
19	PBE1151019 UPPER AXLE B BRASS
20	PBE1151020 HUB
21	PBE1151021 HANDLE LEVER M6-1 X 220
22	PBE1151022 BALL KNOB M6-1
23	PBE1151023 BUTTON HD CAP SCR 10-32 X 3/4
24	PBE1151024 CAP SCREW 10-32 X 1/2
25	PBE1151025 CAP SCREW 10-32 X 3/4
26	PBE1151026 STEEL BALL 4MM
27	PBE1151027 BALD EAGLE LABEL
28	PBE1151028 BALL PLUNGER SPRING
29	PBE1151029 FLAT HD CAP SCR 10-32 X 1/2
30	PBE1151030 DOWEL PIN 5 X 12MM
31	PBE1151031 CAP SCREW 10-32 X 1
32	PBE1151032 RUBBER GROMMET



# Accessories

## Our Most Popular Redding® Shell Holders

These quality steel shell holders firmly hold a case in place for all reloading operations.

Caliber	Redding® Shell Holder	Bullets.com Model Number
.204 Ruger	#10	BL5782
.223 Rem	#10	BL5782
.243 Win	#1	BL5791
.270 Win	#1	BL5791
.270 WSM	#6	BL5798
.284 Win	#1	BL5791
.30 Mauser	#13	BL5905
.30-06 Sprg	#1	BL5791
.300 SAUM	#6	BL5798
.300 Win Mag	#6	BL5798
.308 Win	#1	BL5791

Caliber	Redding® Shell Holder	Bullets.com Model Number
.357 Sig	#5	BL5827
.38 Super	#5	BL5827
9mm Luger	#13	BL5905
.380 ACP	#10	BL5782
.40 S&W	#5	BL5827
.45 Auto	#1	BL5791
6mm BR	#1	BL5791
6mm XC	#1	BL5791
6.8 SPC	#5	BL5827
7mm Rem Mag	#6	BL5798
10mm Auto	#5	BL5827

## Enjoy other Great Bald Eagle™ Products

### Gun Safes



### Rifle Cases



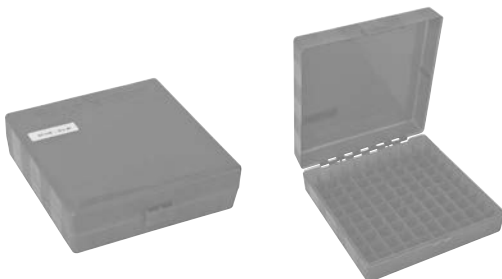
### Powder Scales



### Ultrasonic Cleaners



### Ammo Boxes



### Rests



order online at [www.bullets.com](http://www.bullets.com) or call 1-800-235-0272

**BULLETS.COM™**

**PHONE:** (800) 235-0272

**OUTSIDE THE US:** (360) 647-0801

**TECHNICAL SUPPORT:** (360) 676-3299

Visit our website at:

***bullets.com***™