

Model D4646 Hose Reel Instruction Sheet



Phone #: (360) 734-3482 • Online Tech Support: tech-support@shopfox.biz • Web: www.shopfox.biz

WARNING

To reduce the risk of injury when using this tool:

- Make sure the incoming air pressure does not exceed the maximum rating of 300 PSI for the reel or hose/accessory you are using. Otherwise, the fittings could crack or explode.
- Protect your eyes by wearing safety glasses or a face shield when assembling, mounting and using the hose reel.
- Pressurized air may cause injury to exposed body parts. Never expose any part of your body to pressurized air.
- Make sure the hose reel is firmly mounted to a stable surface before pressurizing.
- Do not allow children to use the hose reel. Keep children clear of the work area.

Specifications

Max. Incoming Air Pressure..... 300 PSI
Max. Hose Length..... 50 ft. of $\frac{3}{8}$ " Hose
Air Fitting Size $\frac{1}{4}$ " NPT
Maximum Air Flow 25 CFM

Items Needed

Open-End Wrench 13mm.....1
Open-End Wrench 15mm.....1
Open-End Wrench 8mm1
Adjustable Wrench.....1
Phillips Head Screwdriver Stubby #21
Air Compressor1
Air Hose (Connects Compressor/Hose Reel)1
Fasteners $\frac{7}{16}$ "..... As Needed

Inventory

The Model D4646 is shipped fully assembled, as shown in Figure 1.

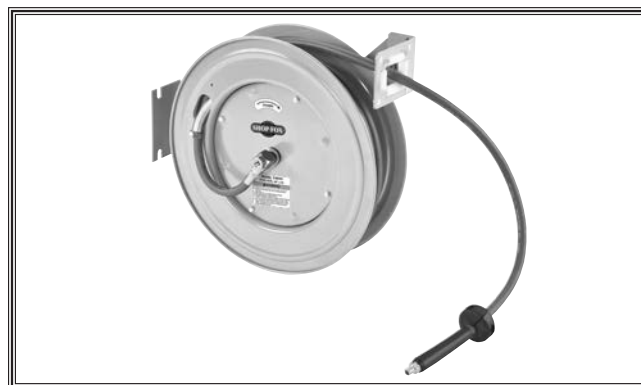


Figure 1. Model D4646.

Mounting

1. Choose a location for mounting the hose reel to a wall, floor, ceiling, etc. that uses a load-bearing structural member capable of supporting the combined weight of the reel, hose and any forces applied to it.

— If you plan to install the hose reel on a ceiling, place it 10 feet above the floor.

COPYRIGHT © SEPTEMBER, 2017 BY WOODSTOCK INTERNATIONAL, INC.

WARNING: NO PORTION OF THIS MANUAL MAY BE REPRODUCED IN ANY SHAPE OR FORM WITHOUT

#19185ES

THE WRITTEN APPROVAL OF WOODSTOCK INTERNATIONAL, INC.

Printed in China

2. Check that the hose guide roller bracket position (see **Figure 2**) is suitable for the chosen mounting position.

—If the roller bracket or hose guide roller position is not in the best position, refer to **Changing Roller Bracket Position**.

3. Mark the location of the mounting slots on the reel base (see **Figure 2**) in the chosen location, then secure with (4) 7/16" grade 5 fasteners.

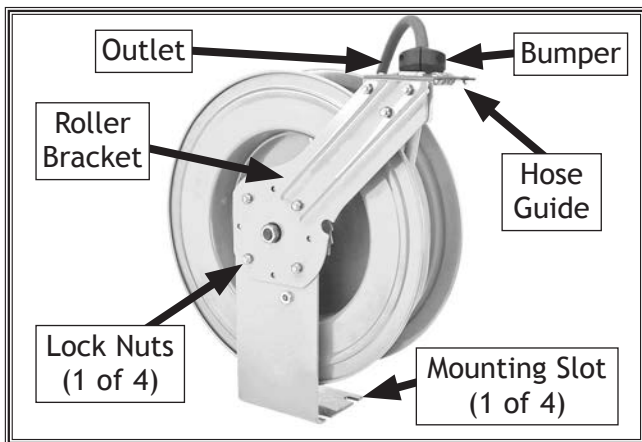


Figure 2. Roller bracket and main components.

4. Remove the plastic plug from the inlet valve (see **Figure 3**), apply Teflon pipe tape or thread sealant to the threads of the incoming air hose (not included), then connect it to the inlet valve.



Figure 3. Location to connect incoming air hose.

5. Connect the other end of the incoming air hose to the compressor, if you have not already done so.

6. Apply Teflon pipe tape or thread sealant to the outlet hose threads, then attach the tool or nozzle.
7. Turn the air pressure **ON**, then use soapy water to test for leaks. If any are found, turn the air pressure **OFF**, relieve the pressure from the hose, then repair the leaks before putting the hose reel into operation.
8. To adjust the hose bumper (see **Figure 2**), pull some hose out until it clicks in place, loosen the screws on the bumper, slide it close to the hose guide, then tighten the screws.

Changing Roller Bracket Position

1. To change the hose guide roller bracket position, pull out some hose until you hear a "click" to lock it.
2. Remove (4) lock nuts and carriage bolts on the roller bracket (see **Figure 2**), rotate the bracket to any of the alternate positions, then re-install the carriage bolts and lock nuts.

Operation

1. Slowly pull the hose out of the reel assembly until you hear a "click."
2. To lock the hose, let it retract after you hear the reel click.
3. To unlock the hose, slowly pull the hose out until you hear no more clicking, then, while holding onto the hose, let it draw back until the bumper stops against the hose guide.

NOTICE

To avoid damaging the hose reel, always hold onto the hose while it is rewinding.

Adjusting Spring Tension

1. DISCONNECT THE AIR SUPPLY FROM THE HOSE REEL!
2. Pull approximately 2 feet of the hose out and lock it.
3. Remove the bumper from the hose. Unlock the reel and, while holding onto the drum edge, allow the drum to unwind and thread the hose out of the guide.
4. Lock the hose reel.
5. To increase tension on the hose, unlock it and turn the drum clockwise (as viewed from the inlet valve); to decrease tension, unlock it, then turn the drum counterclockwise.
6. When the desired tension is achieved, lock the hose reel, re-insert the hose through the guide, then re-install the bumper on the hose.
7. Unlock the hose and check the tension. Adjust the position of the bumper if needed.
8. Connect the incoming air supply to the inlet valve.

Replacing Hose

1. DISCONNECT THE AIR SUPPLY FROM THE HOSE REEL!
2. Unwind the hose completely, lock it in place, making sure it will not rotate backward, then remove the bumper.

3. Remove the screw and nut that mount the hose clamp to the drum (see Figure 4).

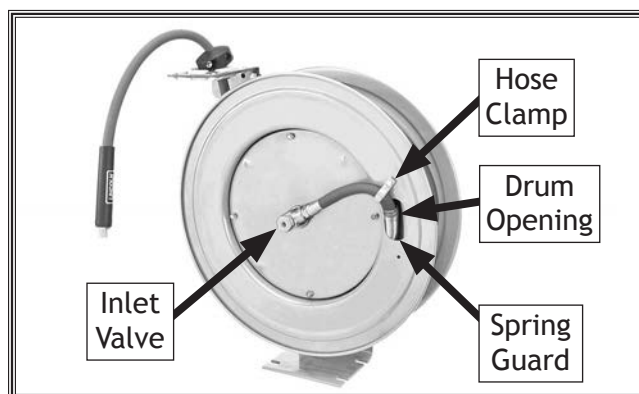
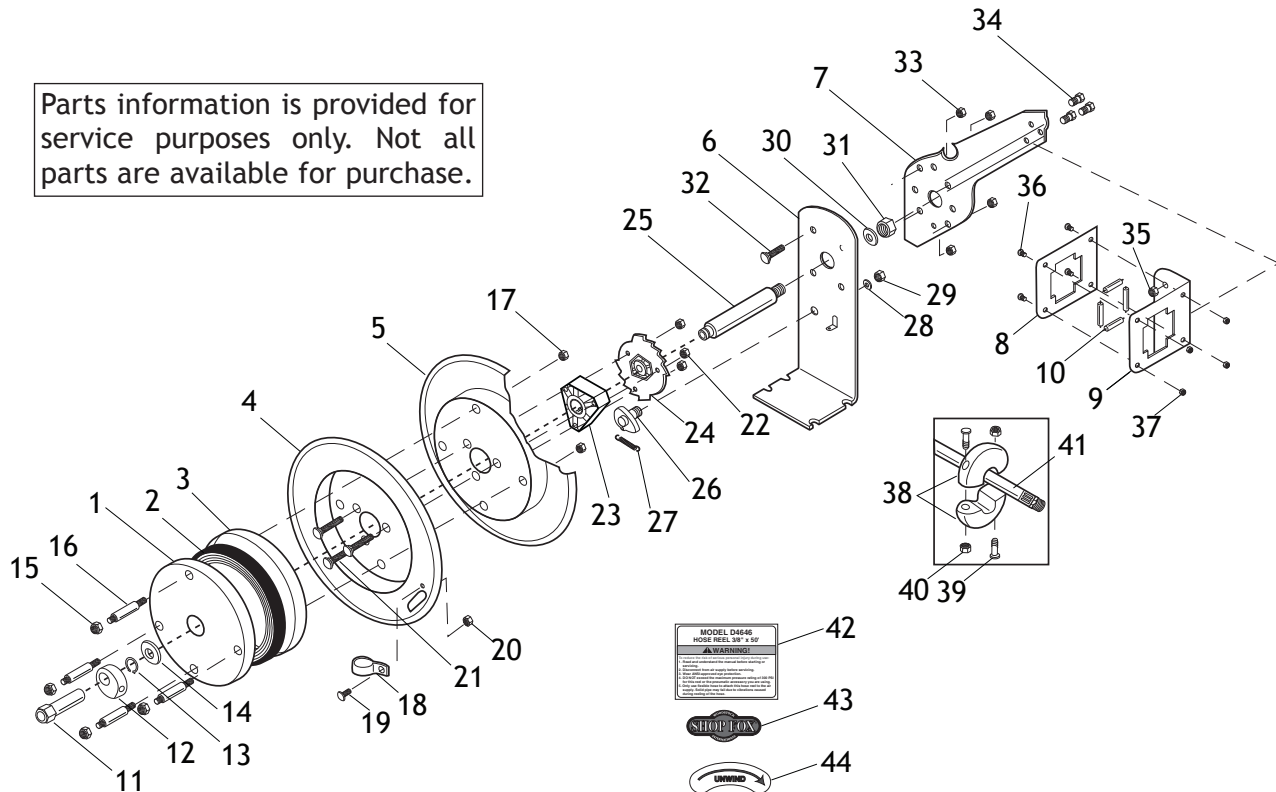


Figure 4. Component locations for removing hose.

4. Using an adjustable wrench, unthread the hose from the inlet valve, then remove the hose through the drum opening and hose guide.
5. Remove the hose clamp and spring guard from the old hose, then replace them on the new hose in the same location.
6. Apply Teflon tape to the threads of the incoming end of the new air hose, then thread the hose into the inlet valve.
7. Unwind any kinks in the new hose.
8. Feed the new hose through the drum opening, then position the spring guard over the drum opening.
9. Fasten the hose clamp onto the hose reel with the screws and nuts removed in **Step 3**.
10. Re-install the bumper on the hose where it was previously located, release the hose, and slowly allow it to wind back onto the reel.
11. Re-adjust spring tension as needed (refer to **Adjusting Spring Tension**).

Parts Breakdown & List

Parts information is provided for service purposes only. Not all parts are available for purchase.



| | | |
|----|-----------|------------------------------|
| 1 | XD4646001 | OUTSIDE SPRING COVER |
| 2 | XD4646002 | MAIN SPRING |
| 3 | XD4646003 | INSIDE SPRING COVER |
| 4 | XD4646004 | OUTSIDE DRUM |
| 5 | XD4646005 | INSIDE DRUM |
| 6 | XD4646006 | BASE |
| 7 | XD4646007 | ROLLER BRACKET |
| 8 | XD4646008 | HOSE GUIDE BACK PLATE |
| 9 | XD4646009 | HOSE GUIDE BRACKET |
| 10 | XD4646010 | HOSE GUIDE ROLLERS 4PC |
| 11 | XD4646011 | AIR INLET 3/8" |
| 12 | XD4646012 | SWIVEL CONNECTOR 3/8" |
| 13 | XD4646013 | EXT RETAINING RING 18MM |
| 14 | XD4646014 | SWIVEL CONNECTOR WASHER 18MM |
| 15 | XD4646015 | LOCK NUT M6-1 |
| 16 | XD4646016 | STANDOFF STUD M6-1 X 57 |
| 17 | XD4646017 | LOCK NUT M6-1 |
| 18 | XD4646018 | HOSE CLAMP |
| 19 | XD4646019 | PHLP HD SCR M5-.8 X 10 |
| 20 | XD4646020 | HEX NUT M5-.8 |
| 21 | XD4646021 | CARRIAGE BOLT M6-1 X 45 |
| 22 | XD4646022 | LOCK NUT M6-1 |

| | | |
|----|-----------|----------------------------|
| 23 | XD4646023 | LOCKING GEAR MOUNT |
| 24 | XD4646024 | LOCKING GEAR |
| 25 | XD4646025 | AXLE |
| 26 | XD4646026 | LOCKING CAM |
| 27 | XD4646027 | EXTENSION SPRING |
| 28 | XD4646028 | FLAT WASHER 10MM |
| 29 | XD4646029 | HEX NUT M10-1.5 |
| 30 | XD4646030 | FLAT WASHER 16MM |
| 31 | XD4646031 | HEX NUT M16-1.5 |
| 32 | XD4646032 | CARRIAGE BOLT M8-1.25 X 18 |
| 33 | XD4646033 | LOCK NUT M8-1.25 |
| 34 | XD4646034 | HEX BOLT M8-1.25 X 16 |
| 35 | XD4646035 | LOCK NUT M8-1.25 |
| 36 | XD4646036 | PHLP HD SCR M5-.8 X 10 |
| 37 | XD4646037 | LOCK NUT M5-.8 |
| 38 | XD4646038 | HOSE BUMPER 2PC |
| 39 | XD4646039 | PHLP HD SCR M6-1 X 25 |
| 40 | XD4646040 | HEX NUT M6-1 |
| 41 | XD4646041 | HOSE 3/8" X 50' |
| 42 | XD4646042 | ID LABEL |
| 43 | XD4646043 | SHOP FOX LOGO LABEL |
| 44 | XD4646044 | HOSE DIRECTION LABEL |

For questions contact Woodstock International Technical Support at (360) 734-3482, or send e-mail to: tech-support@woodstockint.com.