

Model D4975 Negative Pressure Gauge Kit for W1867/68/69 Dust Collectors

Instruction Sheet

Phone #: (360) 734-3482 • Tech Support: techsupport@woodstockint.com • Web: www.woodstockint.com



Introduction

The Model D4975 Negative Pressure Gauge Kit can be installed on the Model W1867, W1868, and W1869 dust collectors to indicate when to clean or replace the canister filter.

WARNING



To reduce your risk of serious injury, read this entire manual **BEFORE** using machine.

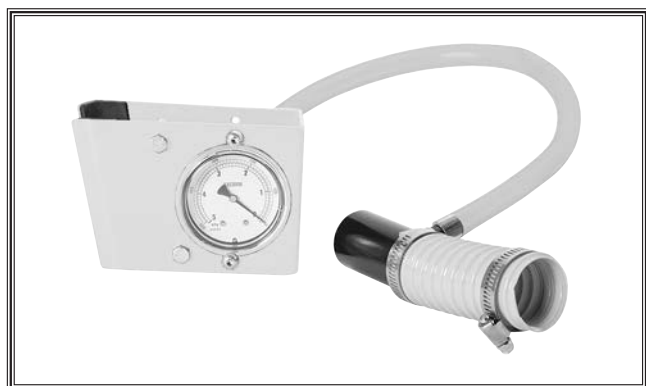


Figure 1. Model D4975 Negative Pressure Gauge Kit.

Inventory

Box Contents (Figure 2)	Qty
A. Pressure Gauge Assembly.....	1
B. Clear Tube ½" x 24".....	1
C. Hose Clamps ½".....	2
D. 90° T-Fitting ½" x 1½" x 1½".....	1
E. Dust Hose 1½" x 4¾".....	1
F. Hose Clamps 1½".....	2

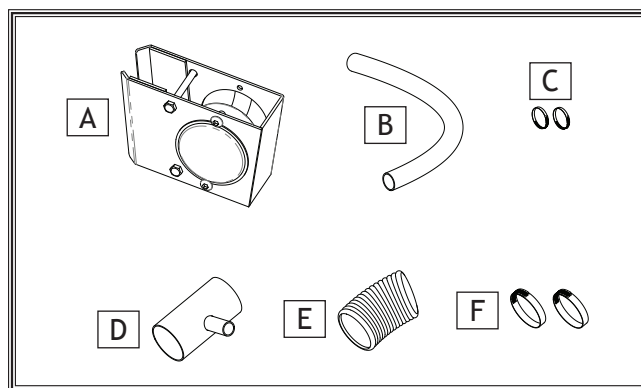


Figure 2. Inventory.

Installation

Use the following steps to assemble the Model D4975 and attach it to your Model W1867, W1868, or W1869 dust collector.



WARNING
Wear safety glasses during entire setup process!

Tools Needed	Qty
Wrenches or Sockets 10mm	2
Phillips Head Screwdriver #2	1

COPYRIGHT © SEPTEMBER, 2021 BY WOODSTOCK INTERNATIONAL, INC.

WARNING: NO PORTION OF THIS MANUAL MAY BE REPRODUCED IN ANY SHAPE OR FORM WITHOUT

#22041CS

THE WRITTEN APPROVAL OF WOODSTOCK INTERNATIONAL, INC.

Printed in Taiwan

To install negative pressure gauge, do these steps:

1. DISCONNECT DUST COLLECTOR FROM POWER!
2. Place (2) ½" hose clamps around clear tube, then slide one end of tube over port on back of pressure gauge (see Figure 3).

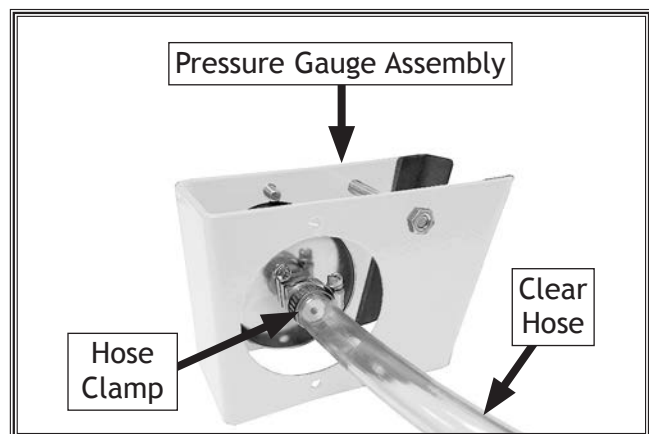


Figure 3. Clear tube placed over pressure gauge port.

3. Slide other end of clear tube over ½" port on T-fitting (see Figure 4).

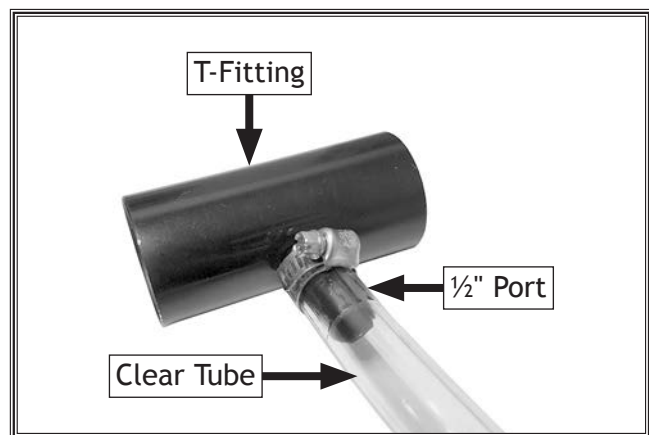


Figure 4. Clear tube placed over T-fitting port.

4. Place (2) 1½" hose clamps around dust hose, then slide one end of hose over (1) ½" port on T-fitting (see Figure 5).

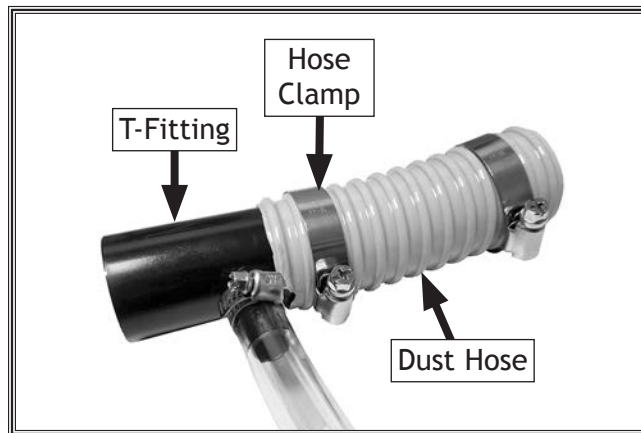


Figure 5. Dust hose placed over T-fitting port.

5. Remove (2) flange nuts from hex bolts on pressure gauge assembly (see Figure 6).
6. Spread jaws of pressure gauge mount just enough to slide mount over support leg near magnetic switch, as shown in Figure 6.

Note: Position of pressure gauge mount on support leg will differ from machine to machine. Place mount near port on intake barrel where pressure gauge will be visible during operations.

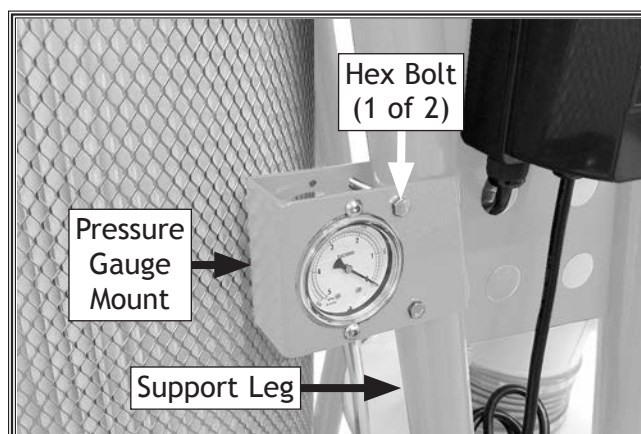


Figure 6. Example of pressure gauge mount placed on support leg.

7. Loosen hose clamp securing vacuum hose to intake barrel port and remove hose from port (see **Figure 7**).

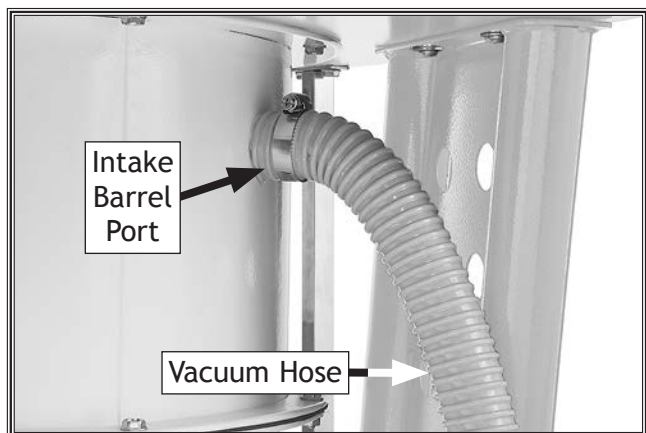


Figure 7. Example of vacuum hose attached to intake barrel port.

8. Slide other end of dust hose from **Step 4** over intake barrel port (see **Figure 8**).
9. Slide vacuum hose over other port on T-fitting (see **Figure 8**).

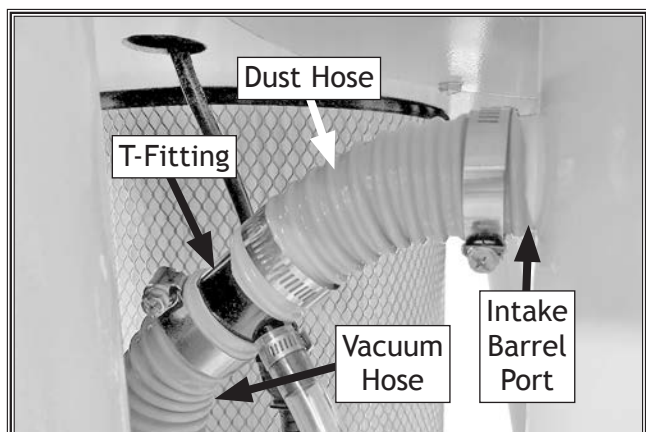


Figure 8. Dust hose placed over intake barrel port and vacuum hose over T-fitting port.

10. Adjust and orient hoses and clear tube as needed to eliminate any kinks, then tighten all (5) hose clamps to secure connections.
11. Slide pressure gauge mount to position where it is easy to read, and secure in place with (2) flange nuts removed in **Step 5**.
12. Connect dust collector to power.

13. Cover intake dust ports and turn dust collector **ON**. Pressure gauge should indicate at least 200mmAq or 2kPa.

- If gauge indicates *at least* 200mmAq or 2kPa, negative pressure kit has been installed correctly and filter is operating efficiently.
- If gauge indicates *less than* 200mmAq or 2kPa, confirm all hose and tube connections are tight and there are no kinks that disrupt air flow. If gauge still indicates less than 200mmAq, refer to **Reading Pressure Gauge** to service filter as required.

Reading Pressure Gauge

The Model W1867, W1868, and W1869 use a handle and internal paddles to remove dust buildup from the filter. The negative pressure gauge will help determine when a more thorough cleaning is needed and whether the filter should be replaced.

If the operating pressure on the pressure gauge drops below 200mmAq or 2kPa (see **Figure 9**), remove and clean the filter, as described in the **Owner's Manual**.

If the operating pressure drops below 150mmAq or 1.5kPa, and cleaning does not improve performance, replace the filter.

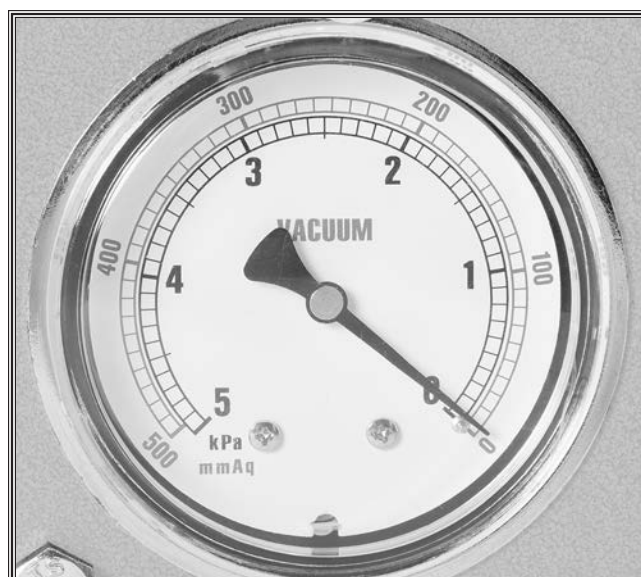
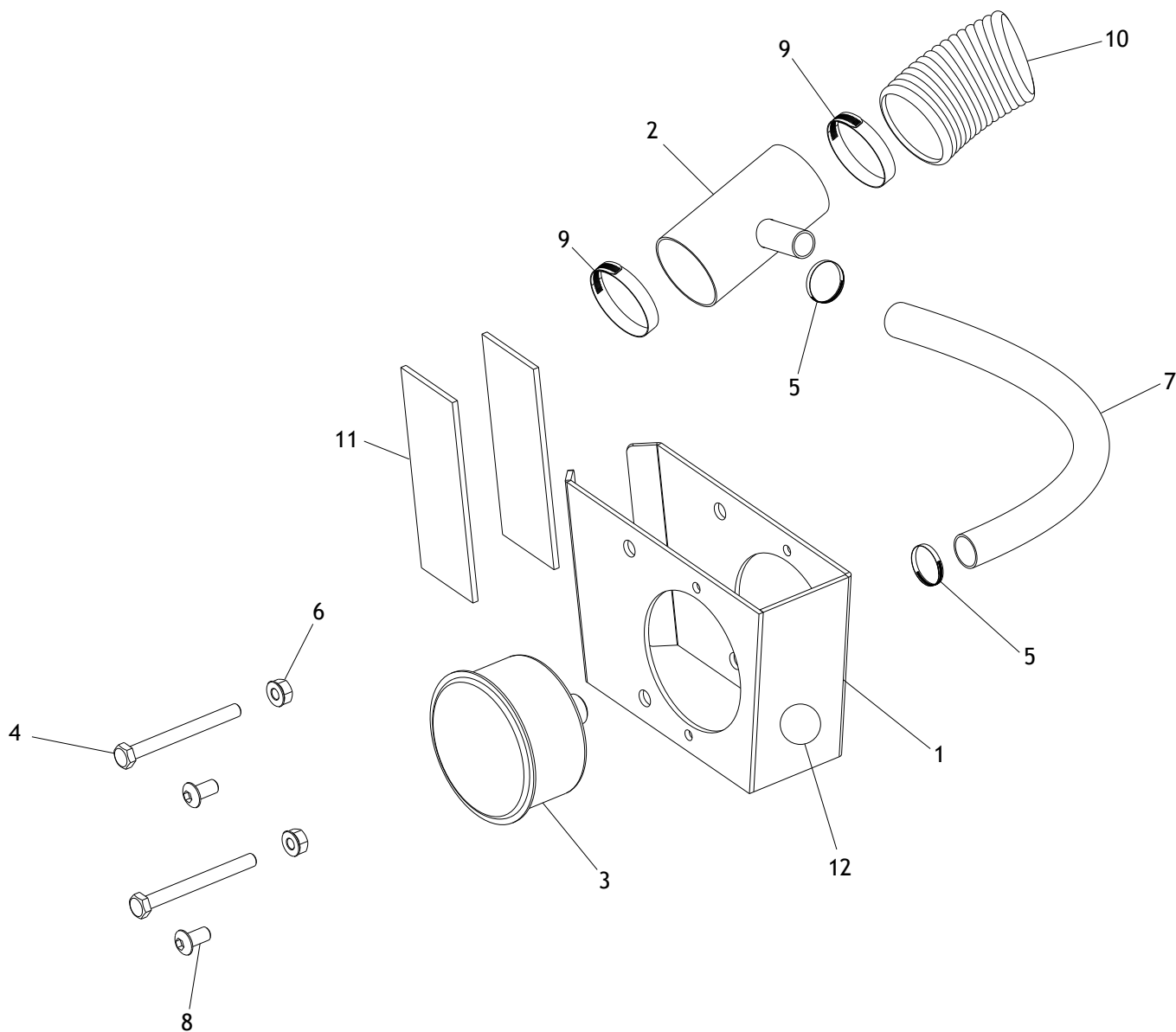


Figure 9. Pressure gauge values.

D4975 Parts Breakdown & List



REF PART # DESCRIPTION

1	XD4975001	PRESSURE GAUGE MOUNT
2	XD4975002	T-FITTING 90-DEG 1/2" X 1-1/2" X 1-1/2"
3	XD4975003	NEGATIVE PRESSURE GAUGE
4	XD4975004	HEX BOLT 1/4-20 X 2-1/2
5	XD4975005	HOSE CLAMP 1/2"
6	XD4975006	FLANGE NUT 1/4-20

REF PART # DESCRIPTION

7	XD4975007	CLEAR TUBE 1/2" X 24"
8	XD4975008	BUTTON HD CAP SCR 1/4-20 X 1/2
9	XD4975009	HOSE CLAMP 1-1/2"
10	XD4975010	DUST HOSE 1-1/2" X 4-3/4"
11	XD4975011	FOAM 35 X 95 X 3MM
12	XD4975012	TOUCH-UP PAINT, SHOP FOX WHITE