



MODEL G8750 6" X 18½" COMPOUND SLIDE TABLE INSTRUCTIONS

For questions or help with this product contact Tech Support at (570) 546-9663 or techsupport@grizzly.com

Introduction

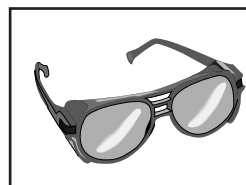
The Model G8750 features 12" of longitudinal travel and 7½" of cross travel, adjustable gibs, dovetailed ways, Acme thread leadscrews, vernier scales, and 9/16" T-slots.

Inventory

Description	Qty
A. Compound Slide Table.....	1
B. Handwheels.....	2
C. Handwheel Lock Nuts.....	3
D. Handwheel Handles.....	3
E. Keys 4 x 4 x 10.....	3

Tools Needed

Description	Qty
• Open-End Wrench 10mm.....	1
• Hex Wrench 4mm.....	1
• Hex Wrench 5mm.....	1
• Standard Screwdriver #2.....	1



! WARNING
Wear safety glasses during the assembly and adjustment steps.

Assembly

1. Secure the compound slide table by bolting both sides of the base to your machine.
2. Place the 4 x 4 x 10 key onto the cross slide (Y-axis) leadscrew, slide the handwheel onto the leadscrew over the key, then hand tighten the lock nut.
3. Hold the lock nut in position with a wrench and tighten the set screw, as shown in **Figure 1**.

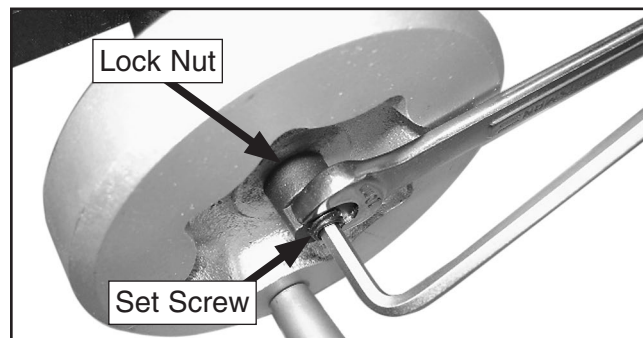


Figure 1. Securing the handwheel.

4. Install the handwheel handle.
5. Repeat **Steps 2–4** to install the longitudinal (X-axis) handwheels. Make sure you install these simultaneously. Otherwise, the lead-screw could accidentally unwind from the table and introduce backlash.

COPYRIGHT © MARCH, 2012 BY GRIZZLY INDUSTRIAL, INC., NOVEMBER, 2015 (ST)
WARNING: NO PORTION OF THIS MANUAL MAY BE REPRODUCED IN ANY SHAPE OR FORM WITHOUT THE WRITTEN APPROVAL OF GRIZZLY INDUSTRIAL, INC.

#BL14920 PRINTED IN CHINA

Adjusting Backlash

The amount the handwheels rotate without moving the table is the backlash. Generally, 0.005"–0.010" of backlash is acceptable.

When the handwheels are correctly installed they contact the leadscrew support blocks (**Figure 2**), and the table moves when the handwheels are rotated.

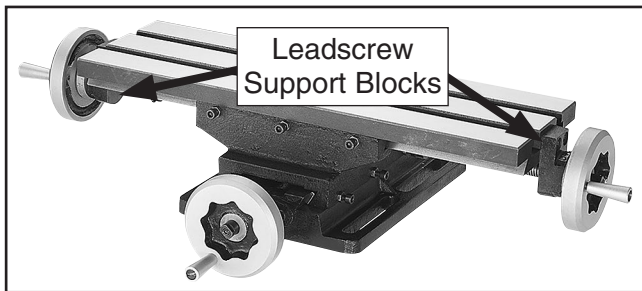


Figure 2. Leadscrew support blocks.

The table will not move if either handwheel is not touching a leadscrew support block.

To adjust backlash:

1. Rotate one of the X-axis handwheels until it contacts the leadscrew support block.
2. On the opposite side of the table, push the other handwheel against the leadscrew support block, loosen the set screw (see **Figure 1**) several turns, hand-tighten the lock, then tighten the set screw.

Adjusting Gibs

The function of the gibs is to remove play in the table and cross slide without causing the slides to bind.

Each gib has multiple lock nuts and gib screws that need to be adjusted. When adjusting, make your adjustments equally and in small increments, and test the feel of the table movement while doing so until it feels right.

To adjust the gibs:

1. Loosen the lock nuts (see **Figure 3**).

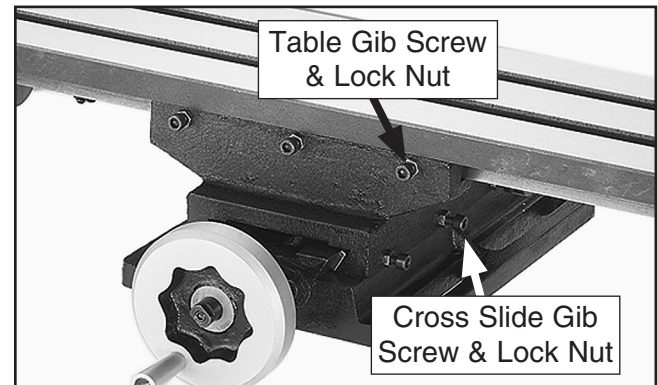


Figure 3. Gib screws and lock nuts.

2. Depending on current table movement, slightly loosen or tighten each gib screw in equal amounts, then move the table and test the feel. When properly adjusted, the gibs should offer slight resistance without binding.
3. Tighten the lock nuts without moving the gib screws.

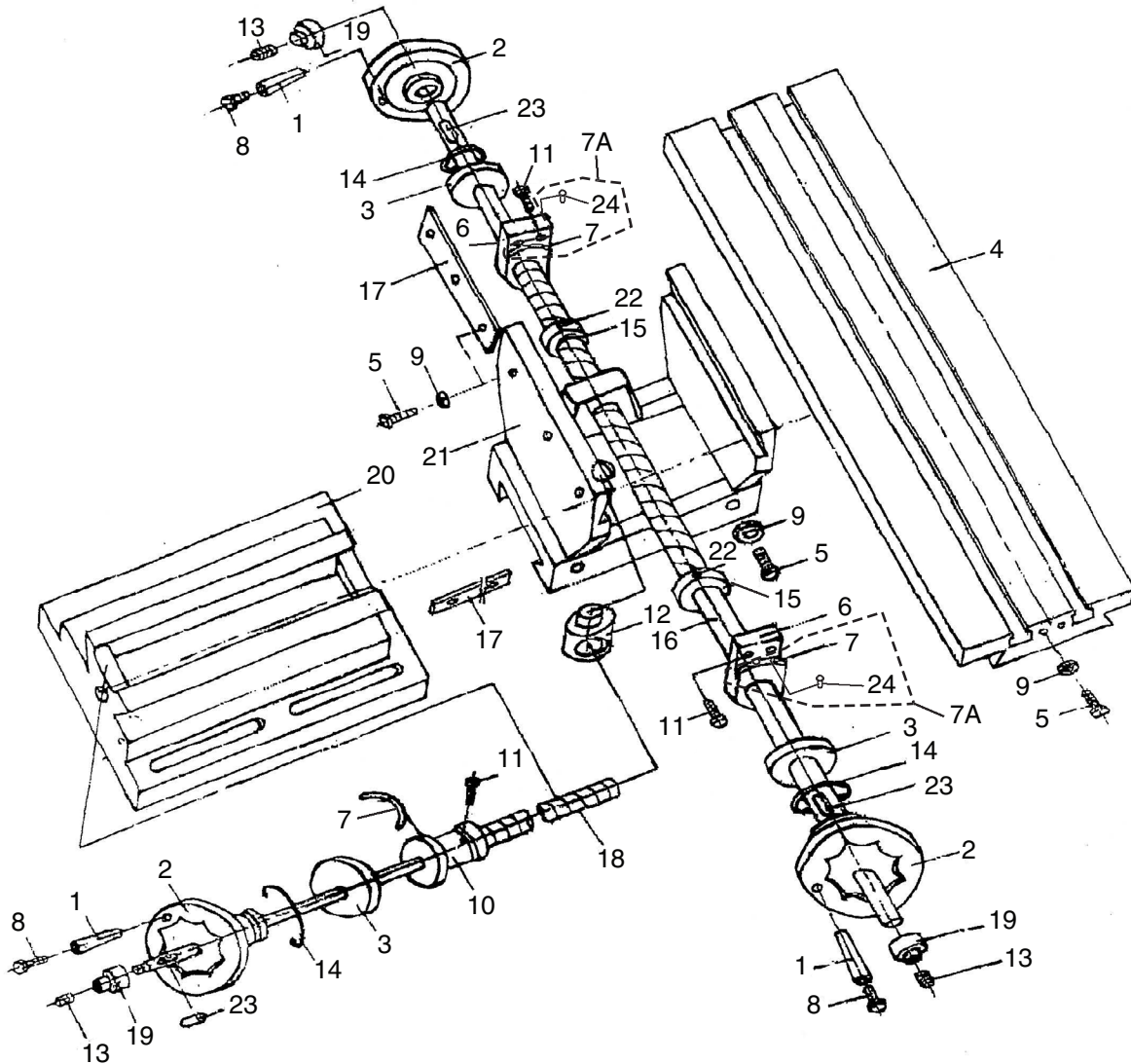
Lubrication

1. Keep the compound slide in good working order by lubricating all moving parts frequently with general purpose oil.
2. Keep a thin layer of general purpose oil on the table and other non-painted surfaces when not in use to help prevent rust.

If you need help with your new compound slide table, call our Tech Support at: (570) 546-9663.



G8750 Parts Breakdown and List



REF	PART #	DESCRIPTION
1	P8750001	HANDWHEEL HANDLE
2	P8750002	HANDWHEEL
3	P8750003	GRADUATED DISC
4	P8750004	TABLE
5	PSS28M	SET SCREW M6-1 X 30
6	P8750006	LEADSCREW SUPPORT BLOCK
7	P8750007	INDICATOR SCALE
7A	P8750007A	SCALE W/RIVETS 1" SET
8	P8750008	HANDWHEEL HANDLE SCREW M6-1 X 47
9	PN01M	HEX NUT M6-1
10	P8750010	CROSS LEADSCREW FLANGE
11	PCAP14M	CAP SCREW M8-1.25 X 20
12	P8750012	CROSS LEADSCREW NUT

REF	PART #	DESCRIPTION
13	PSS17M	SET SCREW M8-1.25 X 6
14	P8750014	STEEL SPRING
15	P8750015	STOP COLLAR
16	P8750016	LONGITUDINAL LEADSCREW
17	P8750017	GIB
18	P8750018	CROSS LEADSCREW
19	P8750019	LOCK NUT
20	P8750020	BASE
21	P8750021	CROSS SLIDE
22	PSS02M	SET SCREW M6-1 X 6
23	PK05M	KEY 4 X 4 X 10
24	P8750024	ALUMINUM RIVET 2.3 X 3.65MM

Parts breakdown provided for reference only. Not all parts shown are available for purchase.



