



NURSERY PUSH CART

MODEL H3032

INSTRUCTION SHEET

The Model H3032 Nursery Push Cart (**Figure 1**) features a low platform to minimize lifting. Weight capacity is 550 pounds.

Inventory (Figure 2)

A.	Platform	1
B.	Cross Brace.....	1
C.	Wheels 4.00 x 8	2
D.	Handle	2
E.	Bolt Bag.....	1
	—Hex Bolts M8-1.25 x 48	6
	—Hex Nut M8-1.25.....	4
	—Flat Washer 8mm	6
	—Lock Washer 8mm.....	6
	—Flat Washer 20mm	4
	—Cotter Pin 4 x 42mm.....	2

Assembly

1. Place the platform on its side and install the handles with four 8mm hex bolts, flat washers, lock washers, and hex nuts.
2. Line up the cross brace between the holes in the handles and secure it with 8mm bolts, flat washers, and lock washers.
3. Slide a 20mm flat washer onto the axle, then a wheel, and then another washer.
4. Secure the wheel on the axle with a cotter pin.
5. Turn the cart on its other side and repeat **steps 4–5** to install the other wheel.

If you need additional help with this procedure, call our service department at: (570) 546-9663.



Figure 1. Model H3032.

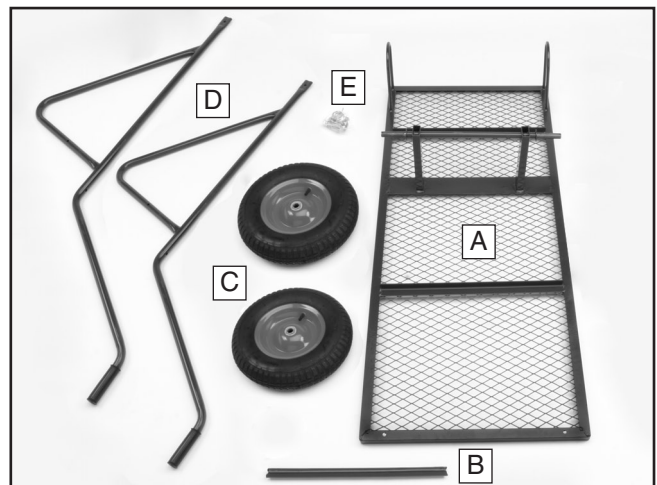


Figure 2. Inventory parts.

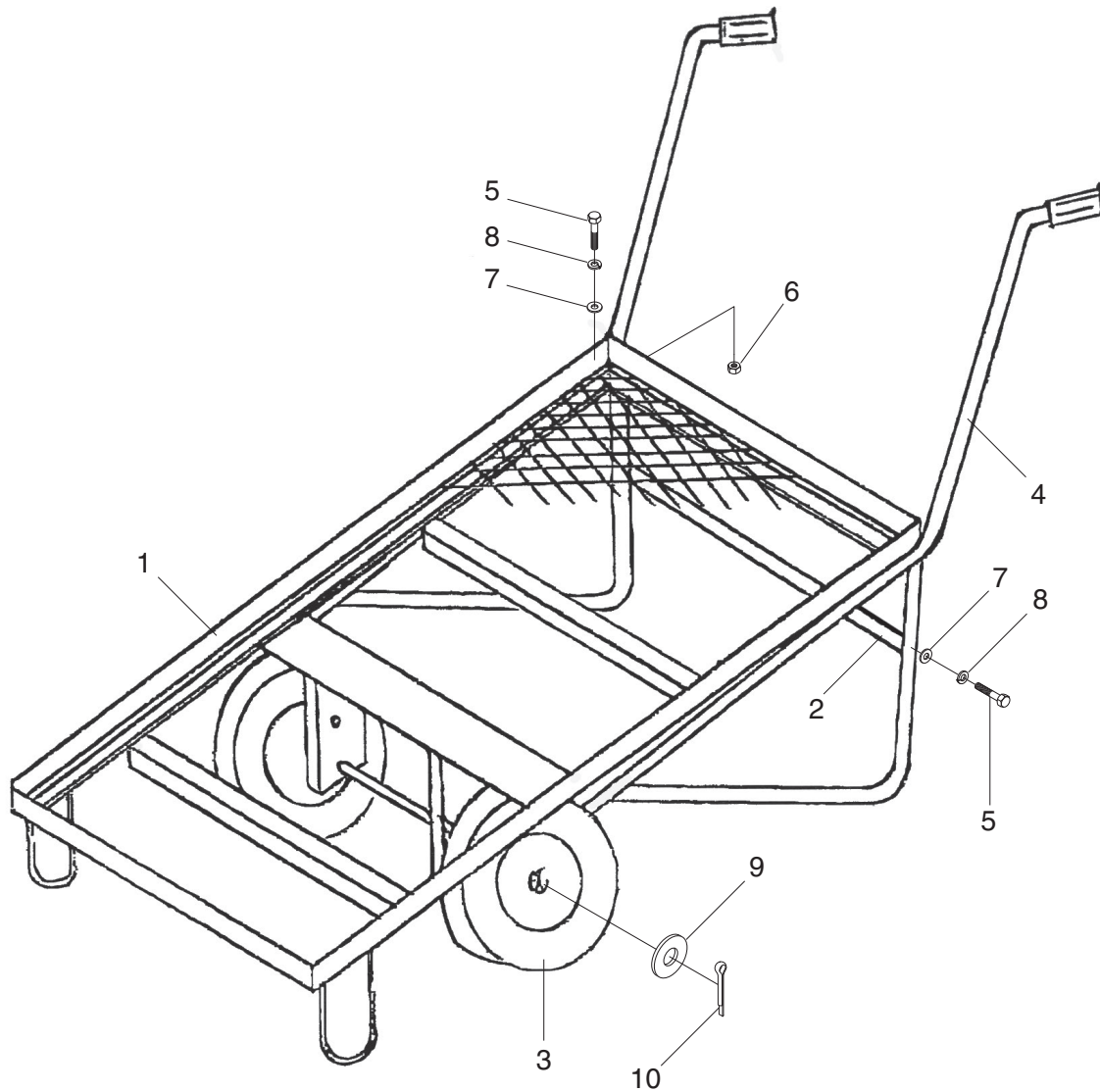
! WARNING

Children may climb into plastic bags and suffocate. Keep all plastic bags included in packaging out of the reach of children.

! CAUTION

Adult supervision is always required if this cart is being used by children.

H3032 Parts Breakdown and List



REF	PART #	DESCRIPTION
1	PH3032001	PLATFORM
2	PH3032002	CROSS BRACE
3	PH3032003	WHEEL
4	PH3032004	HANDLE
5	PB118M	HEX BOLT M8-1.25 X 45

REF	PART #	DESCRIPTION
6	PN03M	HEX NUT M8-1.25
7	PW01M	FLAT WASHER 8MM
8	PLW04M	LOCK WASHER 8MM
9	PW13M	FLAT WASHER 20MM
10	PH3032010	COTTER PIN 4 X 42MM

COPYRIGHT © JUNE, 2004 BY GRIZZLY INDUSTRIAL, INC.
**WARNING: NO PORTION OF THIS MANUAL MAY BE REPRODUCED IN ANY SHAPE
OR FORM WITHOUT THE WRITTEN APPROVAL OF GRIZZLY INDUSTRIAL, INC.**
#EW6386 PRINTED IN CHINA