



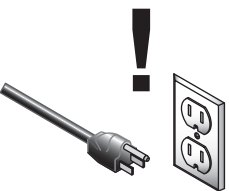
MODEL H5374 1/2 HP ELECTRIC MOTOR INSTRUCTION SHEET

Model H5374 Specifications


Power 1/2 HP
 Cycle..... 60Hz
 Voltage 110/220V
 Rewired 110V
 Amps 6/3A
 RPM..... 1725
 Phase Single
 Class..... B
 Start Capacitor 200MFD 125VAC
 Dimensions..... 1 1/2"D x 2 3/8"L
 Run Capacitor 30MFD 250VAC
 Dimensions..... 1 3/8"D x 2 3/8"L

Electrical Safety

If you are unsure how to attach wires to terminals, DO NOT continue. Contact a qualified electrician for assistance. Connecting wires improperly may cause them to come loose or contact other wires, which can cause electrocution, fire, or a short.

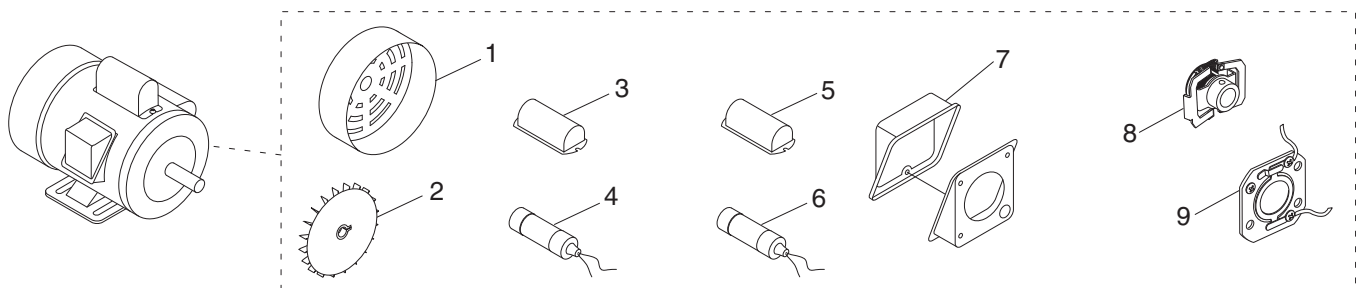


! WARNING
 Disconnect power when replacing motor. Failure to do this may result in serious personal injury.



! WARNING
 Electrocution or fire could result if this motor is not grounded correctly or if your wire connections do not comply with local and state codes. Ensure compliance by checking with a qualified electrician!

Replaceable Parts

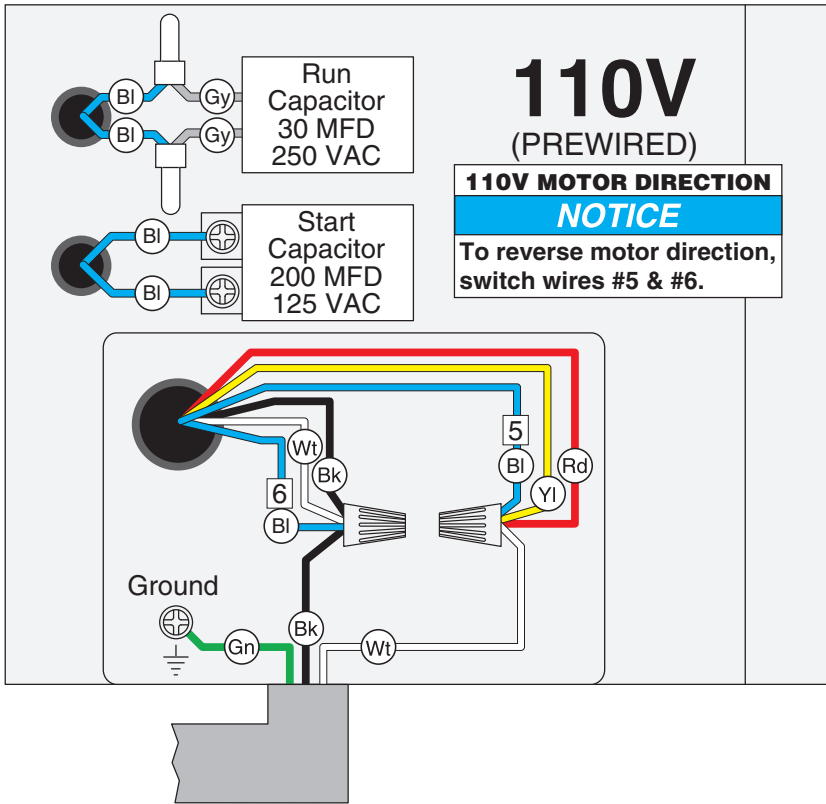


REF	PART #	DESCRIPTION
1	PH5374001	MOTOR FAN COVER
2	PH5374002	MOTOR FAN
3	PH5374003	S CAPACITOR COVER
4	PC200C	S CAPACITOR 200M 125V 1-1/2 X 2-3/8
5	PH5374005	R CAPACITOR COVER

REF	PART #	DESCRIPTION
6	PC030C	R CAPACITOR 30M 250V 1-3/8 X 2-3/8
7	PH5374007	JUNCTION BOX
8	PH5374008	CENTRIFUGAL SWITCH
9	PH5374009	CONTACT PLATE

COPYRIGHT © DECEMBER, 2007 BY GRIZZLY INDUSTRIAL, INC.
WARNING: NO PORTION OF THIS INSTRUCTION SHEET MAY BE REPRODUCED IN ANY SHAPE OR FORM WITHOUT THE WRITTEN APPROVAL OF GRIZZLY INDUSTRIAL, INC.
 #JB10233 PRINTED IN TAIWAN

H5374 Wiring Diagram

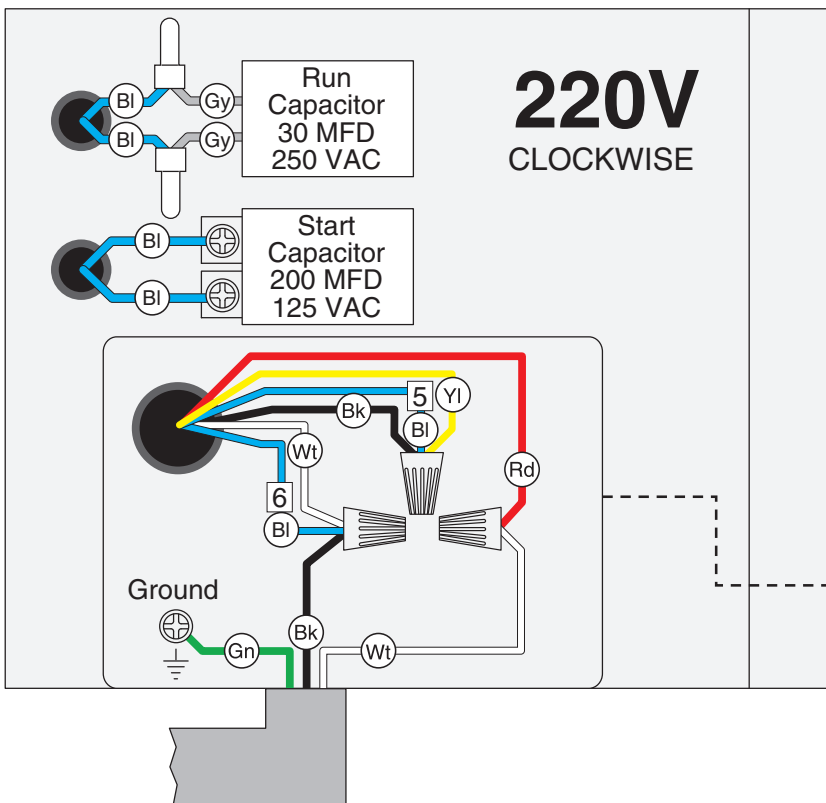


View this page in color at www.grizzly.com.

COLOR KEY

BLACK	Bk
WHITE	Wt
GREEN	Gn
GRAY	Gy
RED	Rd
YELLOW	Yl
BLUE	Bl

WARNING!
SHOCK HAZARD!
Disconnect power before working on wiring.



NOTICE
The motor wiring shown here is current at the time of printing, but it may not match your machine. Always use the wiring diagram inside the motor junction box.

