

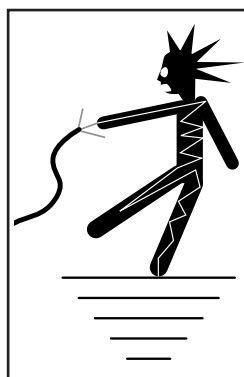


MODEL H5380 1 HP ELECTRIC MOTOR INSTRUCTIONS

For questions or help with this product contact Tech Support at (570) 546-9663 or techsupport@grizzly.com

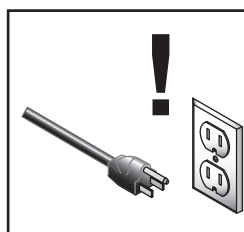
Model H5380 Specifications

Power 1 HP
Cycle.....60 Hz
Voltage.....110V/220V
Prewired Voltage 110V
Amps12.6A/6.3A
Speed 3450 RPM
Phase Single-Phase
Class..... B



! WARNING

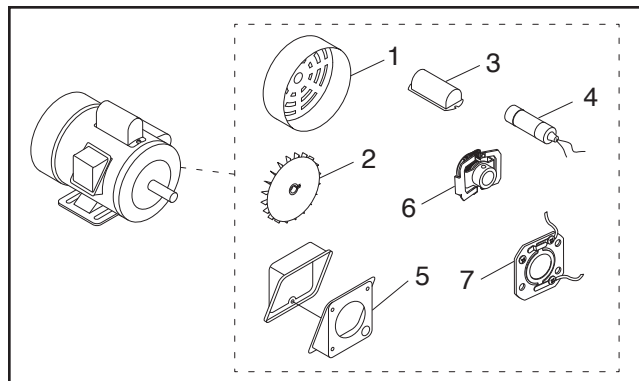
Electrocution or fire could result if this motor is not grounded correctly or if your wire connections do not comply with local and state codes. Ensure compliance by checking with a qualified electrician!



! WARNING

Disconnect power when replacing motor. Failure to do this may result in serious personal injury.

Replaceable Parts



REF PART # DESCRIPTION

1	PH5380001	MOTOR FAN COVER
2	PH5380002	MOTOR FAN
3	PH5380003	S CAPACITOR COVER
4	PH5380004	S CAPACITOR 300M 125V 1-7/8 X 3-3/8
5	PH5380005	JUNCTION BOX
6	PH5380006	CENTRIFUGAL SWITCH
7	PH5380007	CONTACT PLATE

Making Wire Connections

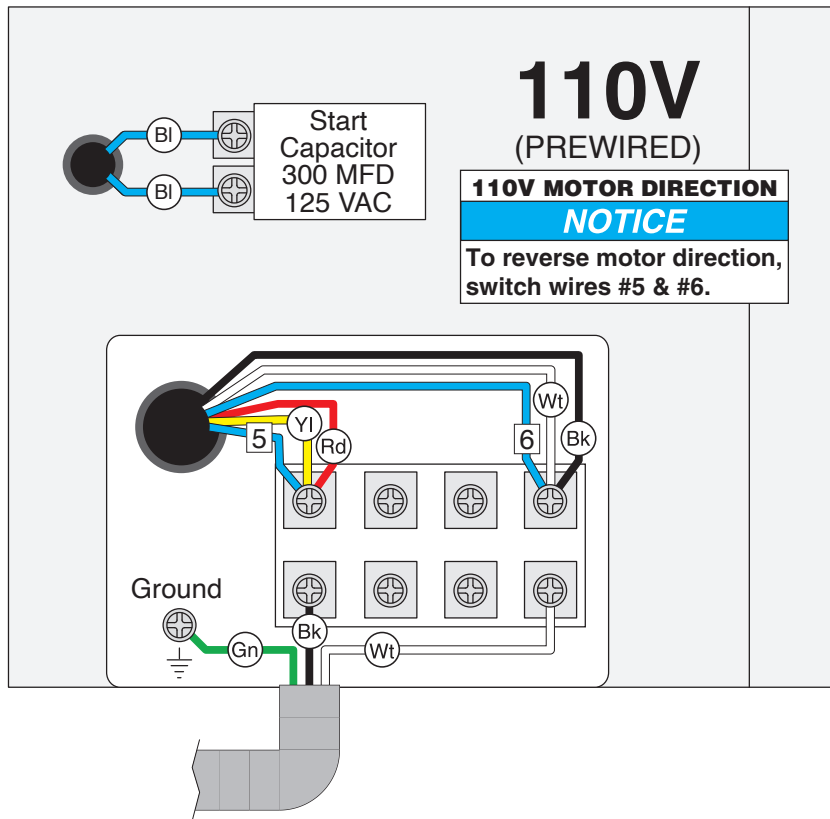
If you are unsure how to attach wires to terminals, DO NOT continue. Contact an electrician for assistance. Connecting wires improperly may cause them to come loose or contact other wires, which can cause electrocution, fire, or a short.

COPYRIGHT © DECEMBER, 2007 BY GRIZZLY INDUSTRIAL, INC., REVISED NOVEMBER, 2024 (LW)
NO PORTION OF THIS INSTRUCTION SHEET MAY BE REPRODUCED IN ANY SHAPE
OR FORM WITHOUT THE WRITTEN APPROVAL OF GRIZZLY INDUSTRIAL, INC.
(FOR MODELS MFD. SINCE 11/24) #JB10239 PRINTED IN TAIWAN

V2.11.24

Keep for Future Reference

H5380 Wiring Diagram



COLOR KEY	
BLACK	Bk
WHITE	Wt
GREEN	Gn
RED	Rd
YELLOW	Yl
BLUE	Bl

NOTICE

The motor wiring shown here is current at the time of printing, but it may not match your motor. Always use the wiring diagram inside the motor junction box.

