



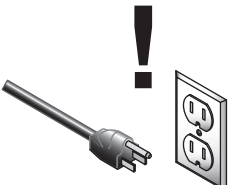
MODEL H5384 2 HP ELECTRIC MOTOR INSTRUCTION SHEET

Model H5384 Specifications


Power 2 HP
 Cycle.....60Hz
 Voltage220V
 Amps10.5A
 RPM.....1725
 Phase Single
 Class..... B
 Start Capacitor 400MFD 125VAC
 Dimensions..... 1 $\frac{7}{8}$ "D x 3 $\frac{3}{8}$ "L
 Run Capacitor 70MFD 250VAC
 Dimensions..... 1 $\frac{7}{8}$ "D x 3 $\frac{3}{8}$ "L

Electrical Safety

If you are unsure how to attach wires to terminals, DO NOT continue. Contact a qualified electrician for assistance. Connecting wires improperly may cause them to come loose or contact other wires, which can cause electrocution, fire, or a short.

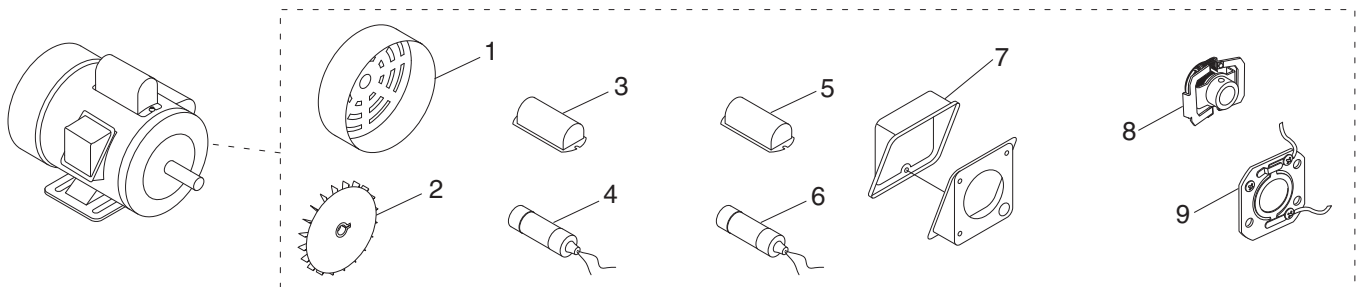


! WARNING
 Disconnect power when replacing motor. Failure to do this may result in serious personal injury.



! WARNING
 Electrocution or fire could result if this motor is not grounded correctly or if your wire connections do not comply with local and state codes. Ensure compliance by checking with a qualified electrician!

Replaceable Parts

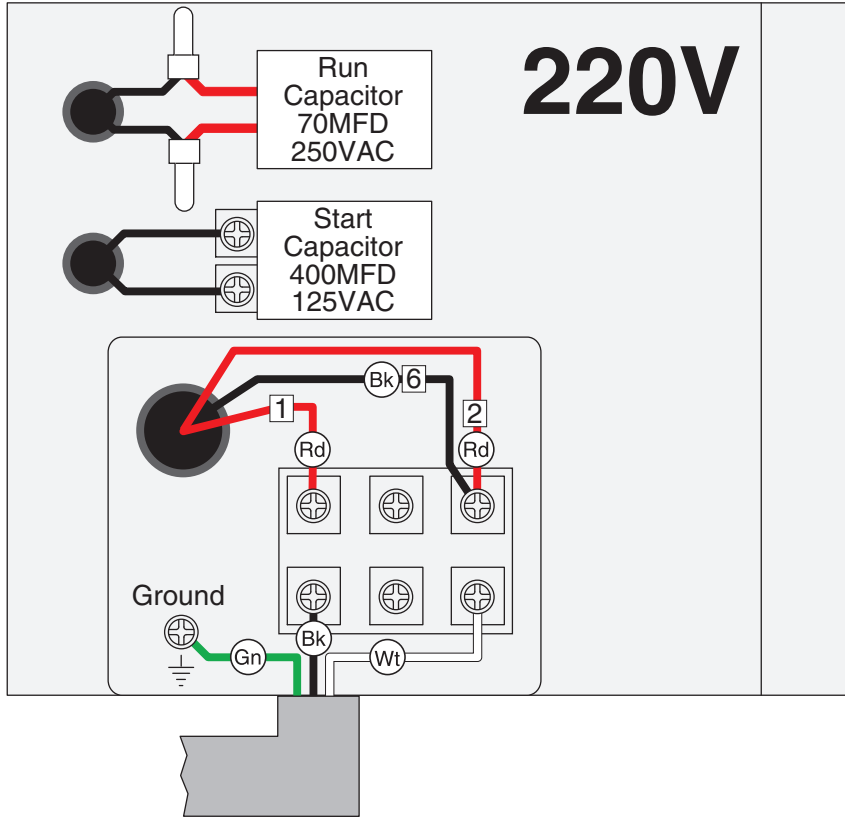


REF	PART #	DESCRIPTION
1	PH5384001	MOTOR FAN COVER
2	PH5384002	MOTOR FAN
3	PH5384003	S CAPACITOR COVER
4	PC400E	S CAPACITOR 400M 125V 1-7/8 X 3-3/8
5	PH5384005	R CAPACITOR COVER

REF	PART #	DESCRIPTION
6	PC070	R CAPACITOR 70M 250V 1-7/8 X 3-3/8
7	PH5384007	JUNCTION BOX
8	PH5384008	CENTRIFUGAL SWITCH
9	PH5384009	CONTACT PLATE

COPYRIGHT © DECEMBER, 2007 BY GRIZZLY INDUSTRIAL, INC.
WARNING: NO PORTION OF THIS INSTRUCTION SHEET MAY BE REPRODUCED IN ANY SHAPE OR FORM WITHOUT THE WRITTEN APPROVAL OF GRIZZLY INDUSTRIAL, INC.
 #JB10235 PRINTED IN TAIWAN

H5384 Wiring Diagram

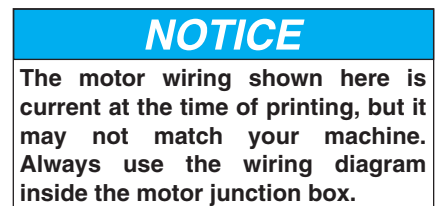
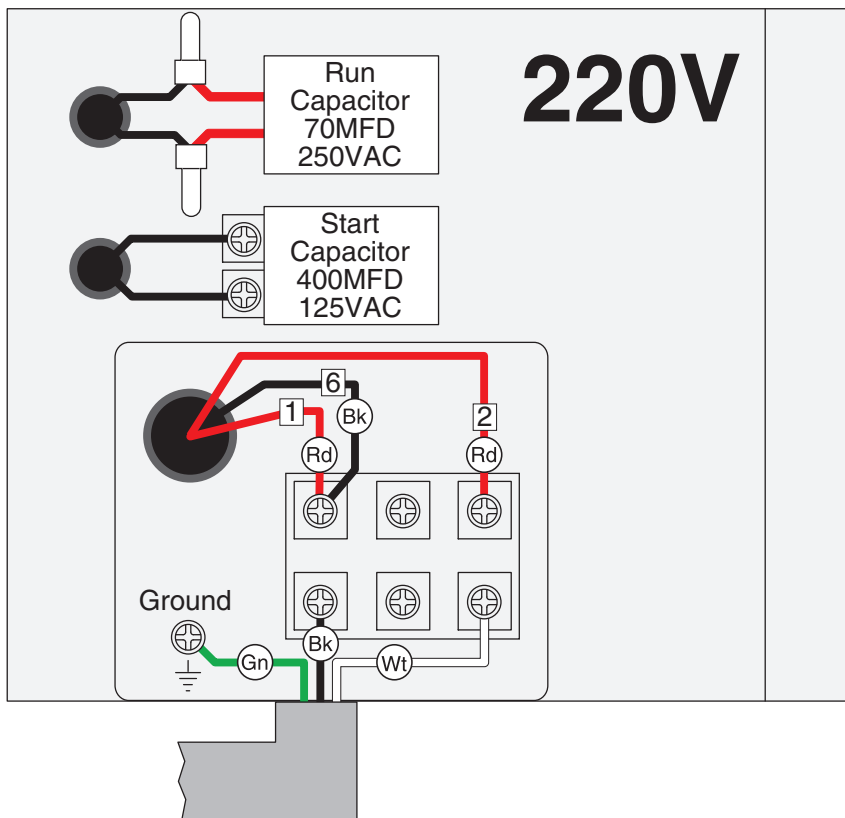


COLOR KEY

BLACK	
WHITE	
GREEN	
RED	



**Clockwise
Rotation (PREWIRED)**



**Counterclockwise
Rotation**

