



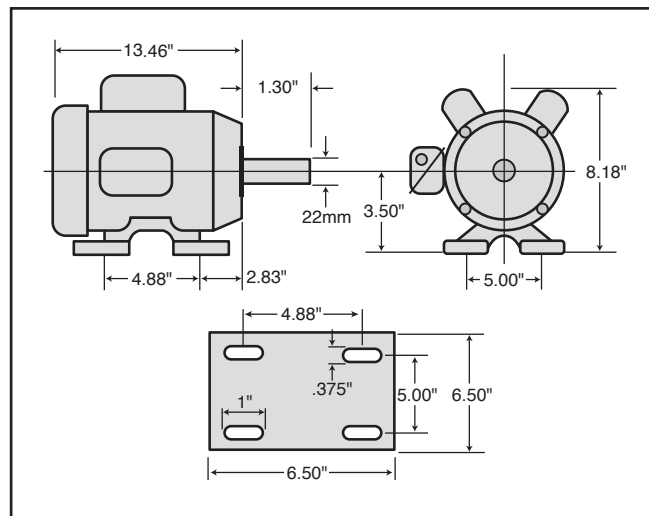
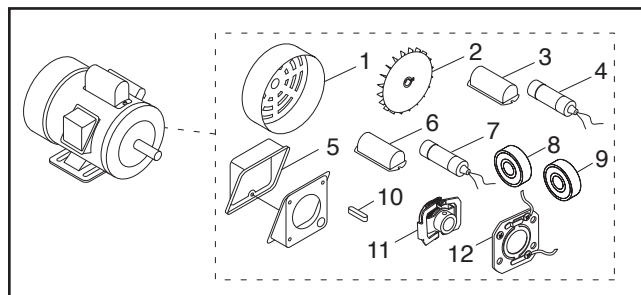
MODEL H5385 2 HP ELECTRIC MOTOR INSTRUCTIONS

For questions or help with this product contact Tech Support at (570) 546-9663 or techsupport@grizzly.com

Model H5385 Specifications

Power 2 HP
Cycle..... 60 Hz
Voltage 110V/220V
Prewired Voltage 110V
Amps 18.6A/9.3A
Speed 3450 RPM
Phase Single-Phase
Class..... B

Replaceable Parts

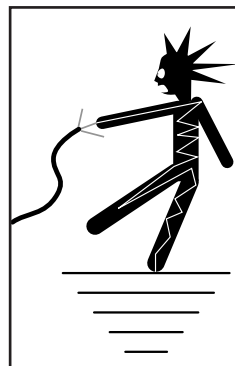


REF PART # DESCRIPTION

1	PH5385001	MOTOR FAN COVER
2	PH5385002	MOTOR FAN
3	PH5385003	S CAPACITOR COVER
4	PH5385004	S CAPACITOR 400M 125V 1-3/4 X 3-3/8
5	PH5385005	JUNCTION BOX
6	PH5385006	RUN CAPACITOR COVER
7	PH5385007	R CAPACITOR 40M 250V 1-3/8 X 2-3/8
8	PH5385008	BALL BEARING 6205ZZ
9	PH5385009	BALL BEARING 6203ZZ
10	PH5385010	KEY 7 X 7 X 30
11	PH5385011	CENTRIFUGAL SWITCH 3450 RPM
12	PH5385012	CONTACT PLATE

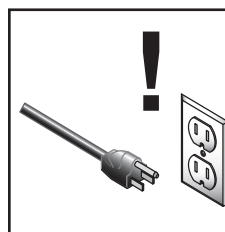
Making Wire Connections

If you are unsure how to attach wires to terminals, DO NOT continue. Contact an electrician for assistance. Connecting wires improperly may cause them to come loose or contact other wires, which can cause electrocution, fire, or a short.



! WARNING

Electrocution or fire could result if this motor is not grounded correctly or if your wire connections do not comply with local and state codes. Ensure compliance by checking with an electrician!



! WARNING

Disconnect power when replacing motor. Failure to do this may result in serious personal injury.

COPYRIGHT © FEBRUARY, 2025 BY GRIZZLY INDUSTRIAL, INC.,
NO PORTION OF THIS INSTRUCTION SHEET MAY BE REPRODUCED IN ANY SHAPE
OR FORM WITHOUT THE WRITTEN APPROVAL OF GRIZZLY INDUSTRIAL, INC.
(FOR MODELS MFD. SINCE 02/25) #LW23479 PRINTED IN TAIWAN

V1.02.25

Keep for Future Reference

H5385 Wiring Diagram



NOTICE
 The motor wiring shown here is current at the time of printing, but it may not match your motor. Always use the wiring diagram inside the motor junction box.

COLOR KEY	
BLACK	Bk
WHITE	Wt
GREEN	Gn
RED	Rd
YELLOW	Yl
BLUE	Bl
GRAY	Gy

