



Model W1734 Downdraft Sanding Table

Introduction

The Model W1734 is intended for use with a dust collection system or a Shop Vac®-style vacuum with at least a 2½" inlet size. Note—*Inlet sizes smaller than this will not allow the Model W1734 to work as designed.*

Specifications

- Table Size.....15" x 25"
- Dust Port Size 2½"
- Minimum Dust Collector Inlet Size..... 2½"
- Overall Size.....15" D x 25" L x 5" H
- Weight.....8 LBS

Connection

Connect your downdraft sanding table to your dust collection system or Shop Vac®-style vacuum with a 2½" dust hose and hose clamp, as shown in **Figure 2**.

Operation

To use the downdraft table, simply start your dust collector or Shop-Vac®-style vacuum and sand your workpiece on the table, as shown in **Figure 3**.

Cleaning

Your table surface may be cleaned with a damp rag. If your table surface gets gummy from wood pitch, you can use a non-corrosive blade cleaner like Oxisol® to easily remove it without harming the tabletop surface. DO NOT clean with products that will harm the paint on the table surface like brake parts cleaner, acetone, or gasoline.

Customer Service

For questions contact Woodstock International Technical Support at (360) 734-3482, or send e-mail to: tech-support@shopfox.biz.



Figure 1. Model W1734.



Figure 2. Dust port connected to dust collection system.



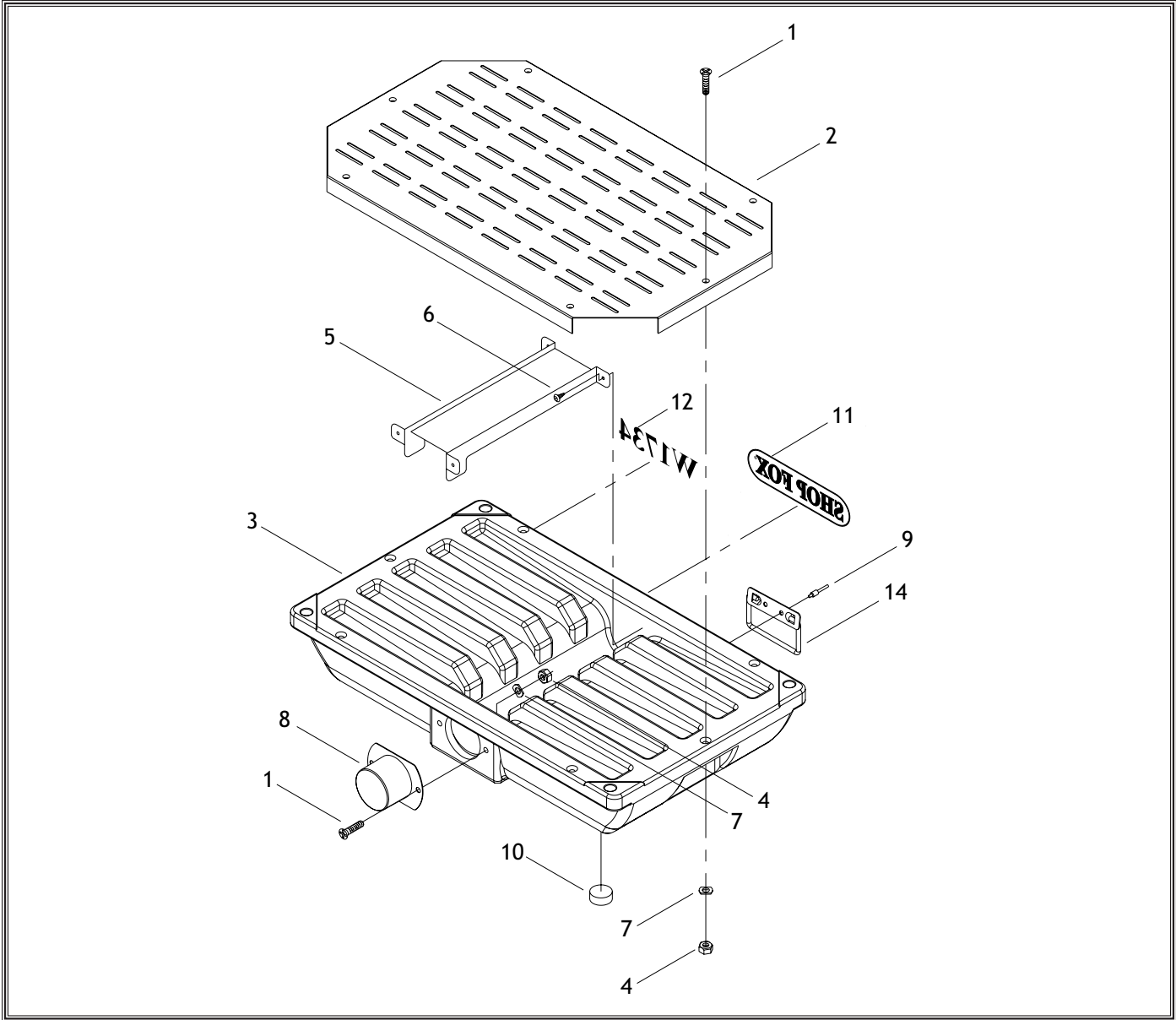
Figure 3. Sanding on the downdraft table.

COPYRIGHT © MAY, 2004. BY WOODSTOCK INTERNATIONAL, INC.

WARNING: NO PORTION OF THIS DOCUMENT MAY BE REPRODUCED IN ANY SHAPE OR FORM WITHOUT THE WRITTEN APPROVAL OF WOODSTOCK INTERNATIONAL, INC.

#6297TR. REVISED OCTOBER, 2004. PRINTED IN CHINA.

W1734 PARTS BREAKDOWN



REF	PART#	DESCRIPTION
1	XPFH12	FLAT HD SCR 1/4-20 X 1
2	X1734002	TABLETOP
3	X1734003	BASE
4	XPN05	HEX NUT 1/4-20
5	X1734005	DUST CHUTE
6	XPHTK5M	TAP SCREW M4.2 x 12
7	XPW06	FLAT WASHER 1/4"

REF	PART#	DESCRIPTION
8	X1734008	DUST PORT 2-1/2"
9	X1734009	BLIND RIVET
10	X1734010	FOOT PAD
11	X1733011	LABEL, SHOP FOX LOGO
12	X1734012	LABEL, MODEL NUMBER
14	X1734014	HANDLE