



MODEL T23114/T23115 HOSE REEL INSTRUCTIONS

⚠ WARNING

To reduce the risk of injury when using this tool:

- Make sure the incoming air pressure does not exceed the maximum rating of 300 PSI for the reel or hose/accessory you are using. Otherwise, the fittings could crack or explode.
- Protect your eyes by wearing safety glasses or a face shield when assembling, mounting and using the hose reel.
- Pressurized air may cause injury to exposed body parts. Never expose any part of your body to pressurized air.
- Make sure the hose reel is firmly mounted to a stable surface before pressurizing.
- Do not allow children to use the hose reel. Keep children clear of the work area.

Specifications

Model T23114

Max. Incoming Air Pressure 300 PSI
Max. Hose Length 50 ft. of $\frac{3}{8}$ " Hose
Air Fitting Size $\frac{1}{4}$ " NPT
Maximum Air Flow 25 CFM

Model T23115

Max. Incoming Air Pressure 300 PSI
Max. Hose Length 50 ft. of $\frac{1}{2}$ " Hose
Air Fitting Size $\frac{1}{2}$ " NPT
Maximum Air Flow 35 CFM

Items Needed

Wrench 13mm 1
Wrench 15mm 1
Wrench 8mm 1
Phillips Head Screwdriver Stubby #2 1
Air Compressor 1
Air Hose (Connects Compressor/Hose Reel).... 1
Fasteners $\frac{7}{16}$ " As Needed

Inventory

The Model T23114/T23115 is shipped fully assembled, as shown in **Figure 1**.

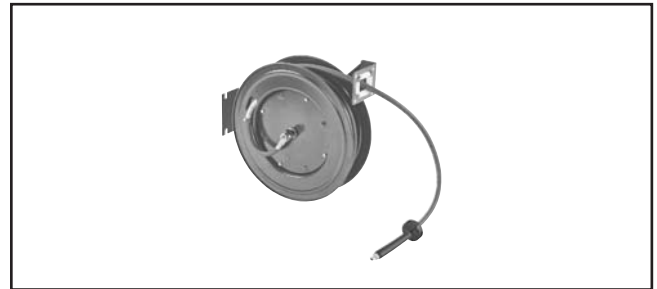


Figure 1. Model T23114.

Mounting

1. Choose a location for mounting the hose reel to a wall, floor, ceiling, etc. that uses a load-bearing structural member capable of supporting the combined weight of the reel, hose and any forces applied to it.

—If you plan to install the hose reel on a ceiling, place it 10 feet above the floor.

2. Check that the hose guide roller bracket position (see **Figure 2**) is suitable for the chosen mounting position.

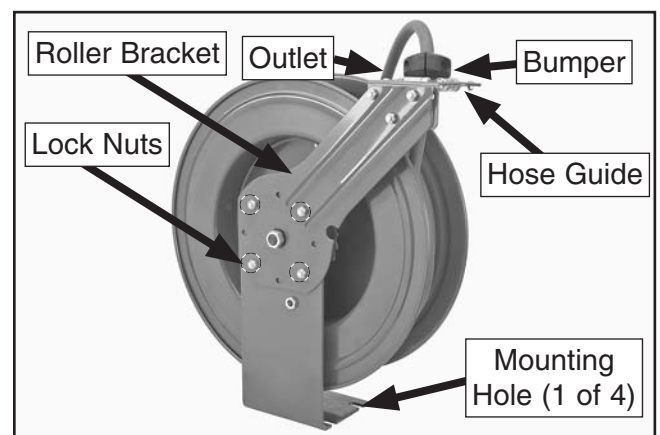


Figure 2. Roller bracket and main components.

COPYRIGHT © OCTOBER, 2010 BY GRIZZLY INDUSTRIAL, INC.

WARNING: NO PORTION OF THIS MANUAL MAY BE REPRODUCED IN ANY SHAPE OR FORM WITHOUT THE WRITTEN APPROVAL OF GRIZZLY INDUSTRIAL, INC.

#BL13344 PRINTED IN CHINA

—If the roller bracket or hose guide roller position is not in the best position, refer to "Changing Roller Bracket Position."

3. Mark the location of the mounting holes on the reel base (see **Figure 2** on **Page 1**) in the chosen location, then secure with $\frac{7}{16}$ " grade 5 fasteners.
4. Remove the plastic plug from the inlet valve (see **Figure 3**), apply Teflon pipe tape or thread sealant to the threads of the incoming air hose (not included), then connect it to the inlet valve.

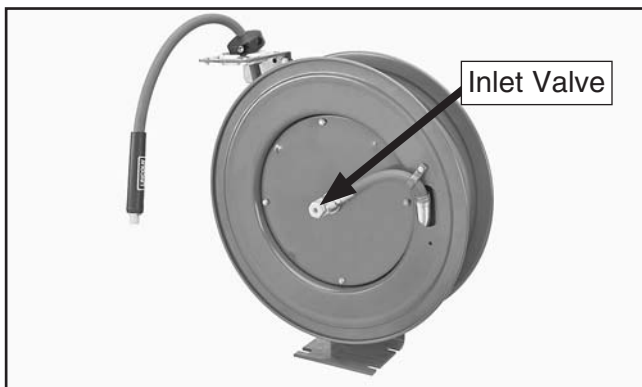


Figure 3. Location to connect incoming air hose.

5. Connect the other end of the incoming air hose to the compressor, if you have not already done so.
6. Apply Teflon pipe tape or thread sealant to the outlet hose threads, then attach the tool or nozzle.
7. Turn the air pressure **ON**, then use soapy water to test for leaks. If any are found, turn the air pressure **OFF**, relieve the pressure from the hose, then repair the leaks before putting the hose reel into operation.
8. To adjust the hose bumper (see **Figure 2**), pull some hose out until it clicks in place, loosen the screws on the bumper, slide it close to the hose guide, then tighten the screws.

Changing Roller Bracket Position

1. To change the hose guide roller bracket position, pull out some hose until you hear a "click" to lock it.
2. Using a 13mm wrench, remove the four lock nuts and carriage bolts on the roller bracket, (see **Figure 2** on **Page 1**) rotate the bracket to any of the alternate positions, then re-install the carriage bolts and lock nuts.

Operation

1. Slowly pull the hose out of the reel assembly until you hear a "click."
2. To lock the hose, let it retract after you hear the reel click.
3. To unlock the hose, slowly pull the hose out until you hear no more clicking, then, while holding onto the hose, let it draw back until the bumper stops against the hose guide.

NOTICE

To avoid damaging the hose reel, always hold onto the hose while it is rewinding.

Adjusting Spring Tension

1. **DISCONNECT THE AIR SUPPLY FROM THE HOSE REEL!**
2. Pull approximately 2 feet of the hose out and lock it.
3. Remove the bumper from the hose. Unlock the reel, and, while holding onto the drum edge, allow the drum to unwind and thread the hose out of the guide.
4. Lock the hose reel.
5. To increase tension on the hose, unlock it and turn the drum clockwise (as viewed from the inlet valve); to decrease tension, unlock it, then turn the drum counterclockwise.
6. When the desired tension is achieved, lock the hose reel, re-insert the hose through the guide, then re-install the bumper on the hose.



7. Unlock the hose and check the tension. Adjust the position of the bumper if needed.
8. Connect the incoming air supply to the inlet valve.

Replacing Hose

1. DISCONNECT THE AIR SUPPLY FROM THE HOSE REEL!
2. Unwind the hose completely, lock it in place, making sure it will not rotate backward, then remove the bumper.
3. Remove the screw and nut that mount the hose clamp to the drum (see **Figure 4**).

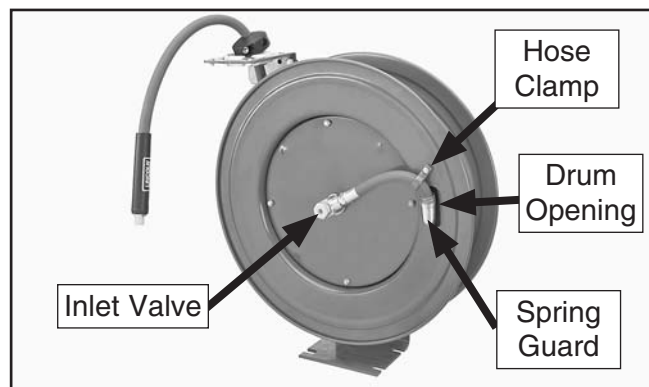


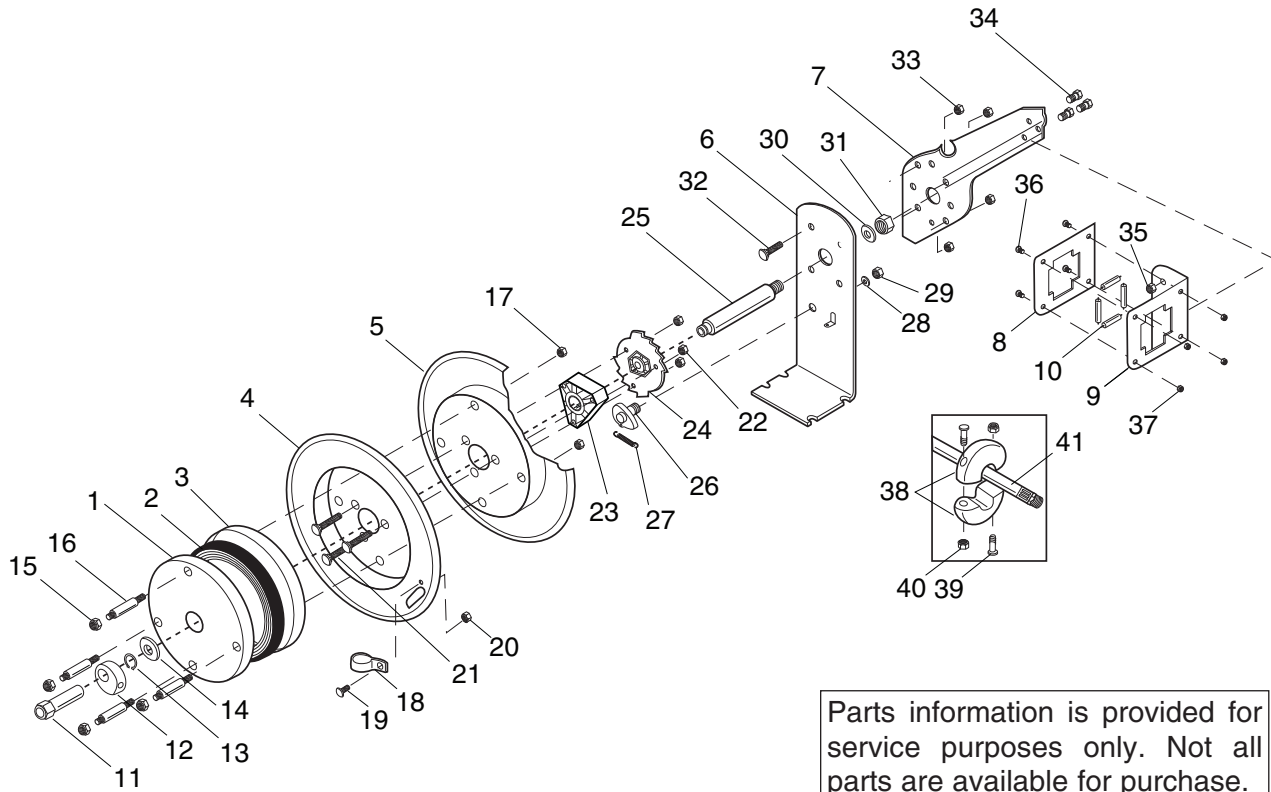
Figure 4. Component locations for removing hose.

4. Using an adjustable wrench, unthread the hose from the inlet valve, then remove the hose through the drum opening and hose guide.
5. Remove the hose clamp and spring guard from the old hose, then replace them on the new hose in the same location.

6. Apply Teflon tape to the threads of the incoming end of the new air hose, then thread the hose into the inlet valve.
7. Unwind any kinks in the hose.
8. Feed the new hose through the drum opening, then position the spring guard over the drum opening.
9. Fasten the hose clamp onto the hose reel with the screws and nuts removed in **Step 3**.
10. Re-install the bumper on the hose where it was previously located, release the hose, and slowly allow it to wind back onto the reel.
11. Re-adjust spring tension as needed (refer to "Adjusting Spring Tension").



Model T23114/T23115 Breakdown



REF	PART #	DESCRIPTION
1	PT23114001	OUTSIDE SPRING COVER
2	PT23114002	MAIN SPRING
3	PT23114003	INSIDE SPRING COVER
4	PT23114004	OUTSIDE DRUM
5	PT23114005	INSIDE DRUM
6	PT23114006	BASE
7	PT23114007	ROLLER BRACKET
8	PT23114008	HOSE GUIDE BACK PLATE
9	PT23114009	HOSE GUIDE BRACKET
10	PT23114010	ROLLERS 4PC
11	PT23114011	AIR INLET 3/8" (T23114)
11	PT23115011	AIR INLET 1/2" (T23115)
12	PT23114012	SWIVEL CONNECTOR 3/8" (T23114)
12	PT23115012	SWIVEL CONNECTOR 1/2" (T23115)
13	PR07M	EXT RETAINING RING 18MM
14	PT23114014	SWIVEL CONNECTOR WASHER 18MM
15	PLN03M	LOCK NUT M6-1
16	PT23114016	STANDOFF BOLT M6-1 X 57
17	PLN03M	LOCK NUT M6-1
18	PT23114018	HOSE CLAMP
19	PS09M	PHLP HD SCR M5-.8 X 10
20	PN06M	HEX NUT M5-.8

REF	PART #	DESCRIPTION
21	PT23114021	CARRIAGE BOLT M6-1 X 45
22	PLN03M	LOCK NUT M6-1
23	PT23114023	LOCKING GEAR MOUNT
24	PT23114024	LOCKING GEAR
25	PT23114025	AXLE
26	PT23114026	LOCKING CAM
27	PT23114027	EXTENSION SPRING
28	PW04M	FLAT WASHER 10MM
29	PN02M	HEX NUT M10-1.5
30	PW08M	FLAT WASHER 16MM
31	PN05M	HEX NUT 16-1.75
32	PCB33M	CARRIAGE BOLT M8-1.25 X 18
33	PLN04M	LOCK NUT M8-1.25
34	PB03M	HEX BOLT M8-1.25 X 16
35	PLN04M	LOCK NUT M8-1.25
36	PS09M	PHLP HD SCR M5-.8 X 10
37	PLN02M	LOCK NUT M5-.8
38	PT23114038	HOSE BUMPER
39	PS47M	PHLP HD SCR M6-1 X 25
40	PN01M	HEX NUT M6-1
41	PT23114041	HOSE 3/8" X 50' (T23114)
41	PT23115041	HOSE 1/2" X 50' (T23115)

If you need help with your new hose reel, call our Tech Support at: (570) 546-9663.

