



# MODEL T26691-92 HEAT SEALING MACHINES INSTRUCTIONS

For questions or help with this product contact Tech Support at (570) 546-9663 or techsupport@grizzly.com

## Introduction

The Model T26691-92 provides a strong, air-tight, water-tight seal using polyethylene or polypropylene plastic bags.

## Specifications

Model	T26691	T26692
Power	400W	1000W
Seal Length	300mm	400mm
Seal Width	3mm	3mm
Seal Thickness	0.4mm	0.4mm
Heating Time	0.2-1.5 (sec)	0.2-2.0 (sec)
Dimensions	3 <sup>3</sup> / <sub>4</sub> x 17 <sup>3</sup> / <sub>4</sub> x 7 <sup>1</sup> / <sub>16</sub> in.	3 <sup>5</sup> / <sub>8</sub> x 22 <sup>1</sup> / <sub>16</sub> x 7 <sup>1</sup> / <sub>16</sub> in.
Weight	10 lbs.	12 lbs.

## Inventory (Figure 1)

## Qty

- A. Heat Sealing Machine ..... 1
- B. Teflon Fabric Strips ..... 2
- C. Heating Elements ..... 2

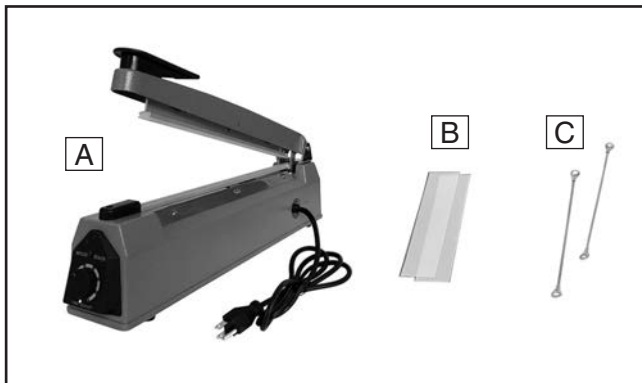


Figure 1. Model T26691-92 inventory.

## Operation

1. Remove shipping brace, place sealer on level surface, and plug into power supply.
2. Adjust dial (see **Figure 2**) according to thickness and type of plastic bag.

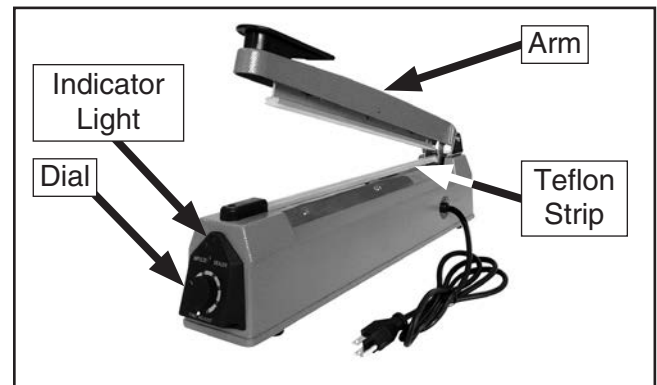


Figure 2. Model T26691-92 component identification.

**Note:** Use a higher indicator setting for thick material and a lower setting for thin material (see **Figure 3**).

Indicator Level	Polyethylene	Polypropylene
1	Under 0.06mm	
2	Under 0.1mm	
3	Under 0.14mm	
4	Under 0.2mm	Under 0.03mm
5		Under 0.044mm
6		Under 0.044mm
7		Under 0.08mm

Figure 3. Material heating levels.

COPYRIGHT © FEBRUARY 2015 BY GRIZZLY INDUSTRIAL, INC.

**WARNING: NO PORTION OF THIS MANUAL MAY BE REPRODUCED IN ANY SHAPE OR FORM WITHOUT THE WRITTEN APPROVAL OF GRIZZLY INDUSTRIAL, INC.**

#MN17204 PRINTED IN CHINA

- Open arm, place shortest width of bag across Teflon strip, and press arm down. Red indicator light will illuminate.

**Note:** *Sealer will not turn ON until you press arm down.*

- After red light turns off, wait for seal to cool, then raise arm, and remove bag.
- Check seal.

—If sealer leaves a 2-3mm wide band across bag, dial setting is correct.

—If sealer does *not* leave an evenly melted band across bag, see **Troubleshooting**.

### Cleaning/Maintenance

- DISCONNECT MACHINE FROM POWER!
- Use eraser, dry cloth, or finger to remove residue from Teflon strip and rubber strip on arm. Do not use solvents.

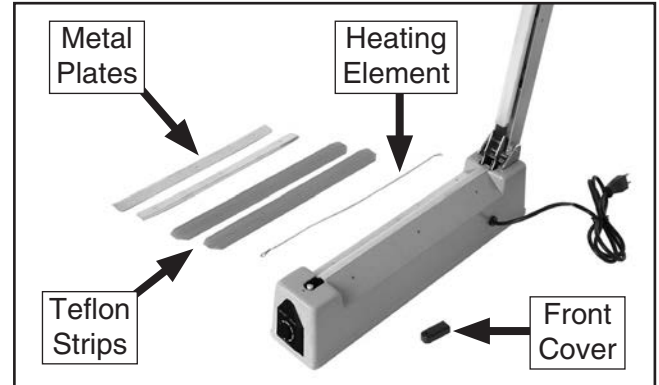
### Service

If the Teflon strips become torn, replace them and the heating element.

#### To replace Teflon strips and heating element:

- DISCONNECT MACHINE FROM POWER!

- Remove front cover and push forward on terminal assembly to release heating element (see **Figure 4**).



**Figure 4.** Components that must be removed when replacing Teflon strips or heating element.

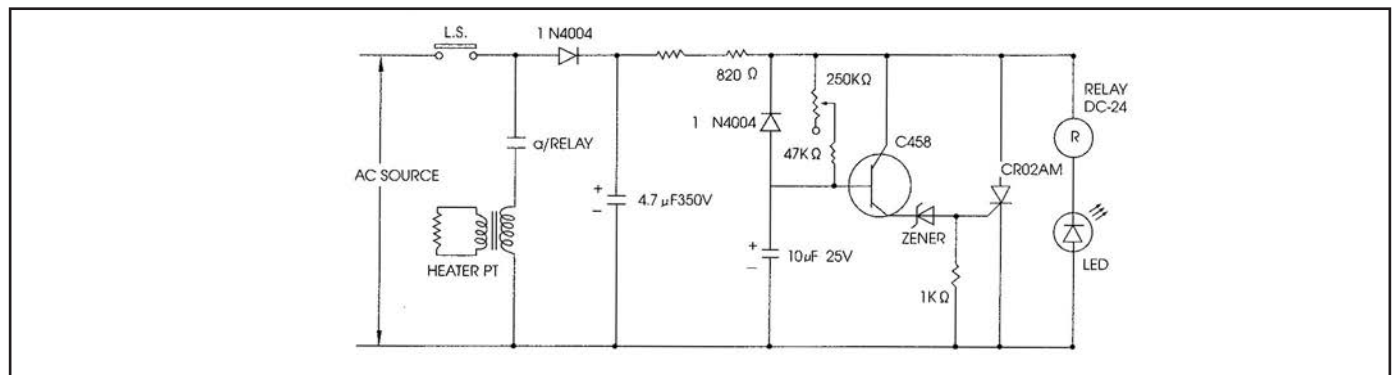
- Install new Teflon strips and heating element. Place element between strips, then reinstall metal plates.

### Troubleshooting

- If sealer creates a partial seal, select a higher dial setting to increase heating time.
- If sealer melts through bag, or if bag sticks to Teflon strip, select a lower dial setting.
- If bag sticks to rubber strip on arm, hold arm down longer after red light switches off to increase cooling time.

*If you need help with your new heat sealer, call our Tech Support at: (570) 546-9663.*

### Electrical Schematic



**Figure 5.** Model T26691-92 electrical schematic.

